

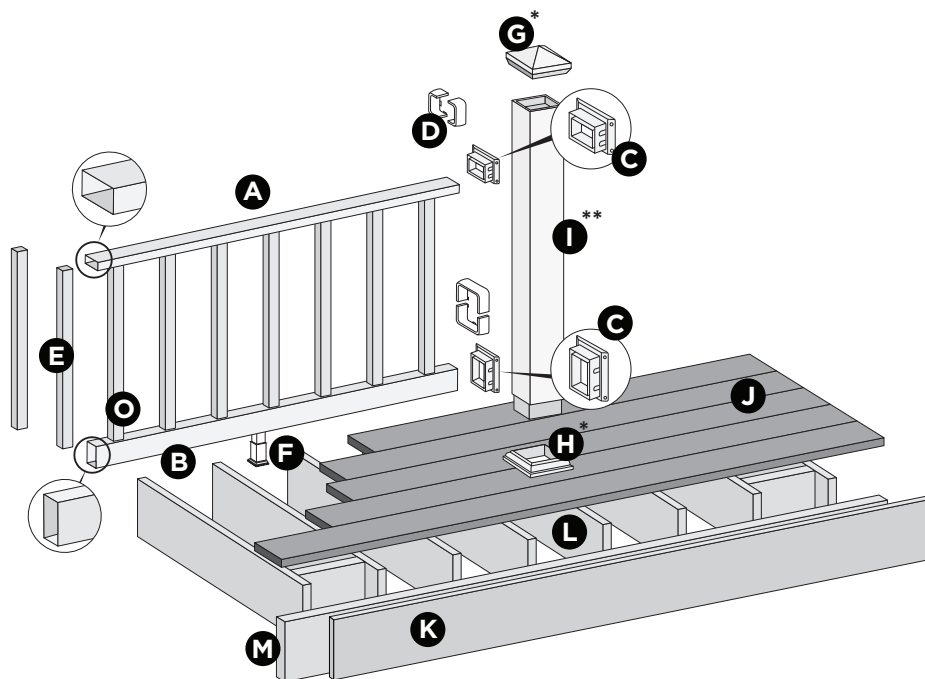
TREX SELECT™ RAILING

Installation Instructions



NOTE: All Trex Select Railing lengths are manufactured at ON CENTER dimensions (spanning from center of each post): 67-5/8" (176.8 cm) for 6' (1.83 m) on center, and 92-5/8" (235.3 cm) for 8' (2.44 m) on center. Note that railings are designed to be slightly longer than required to allow for very slight play in post placement – trimming may be required. IT IS VERY IMPORTANT TO MEASURE FIRST.

PARTS



- A. Select Top Rail
- B. Select Bottom Rail
- C. Select Brackets
- D. Select Bracket Covers
- E. Select Balusters
- F. Adjustable Foot Block
- G. Post sleeve cap*
- H. Post sleeve skirt*
- I. Post sleeve - 4" x 4" (10.2 cm x 10.2 cm) or 6" x 6" (15.2 cm x 15.2 cm) post sleeve)**
- J. Trex decking
- K. TrexTrim™ or Trex fascia
- L. Code-approved wood joist - 2" x 8" (5.1 cm x 20.3 cm)
- M. Code-approved wood rim joist - 2" x 8" (5.1 cm x 20.3 cm) or larger

* Item not included in the Select railing kits.

** Both 4" x 4" (10.2 cm x 10.2 cm) and 6" x 6" (15.2 cm x 15.2 cm) post sleeves are designed to fit over 4" x 4" pressure-treated post.

NOTE: If installing 42" (106.7 cm) railing, use longer post sleeves and measure accordingly to ensure a proper cut (**DO NOT CUT POST SLEEVES TO ACTUAL 42" – THESE NEED TO BE LONGER TO ALLOW FOR POST CAPS TO FIT**).

DETERMINING BALUSTERS NEEDED

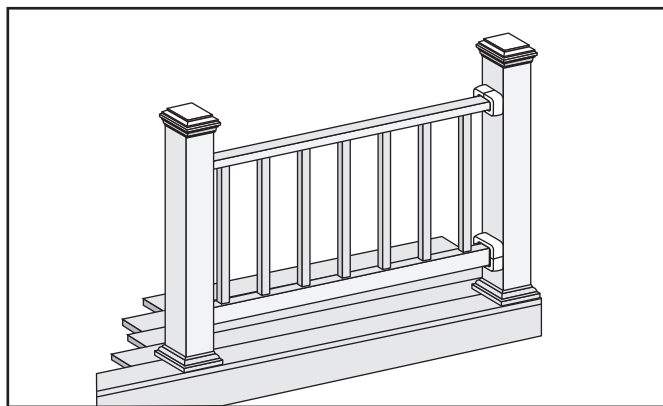
Baluster Type	Per 6' OC Section	Per 8' OC Section
(Horizontal Application)	13	18
(Stair Application)	11	15

NOTE: Pictorial representations shown may only show one style of railing, while others may also be used. Review detailed instructions to determine what railing styles and combinations can be used.

TREX SELECT™ RAILING

Installation Instructions

HOW TO INSTALL TREX SELECT™ RAILING

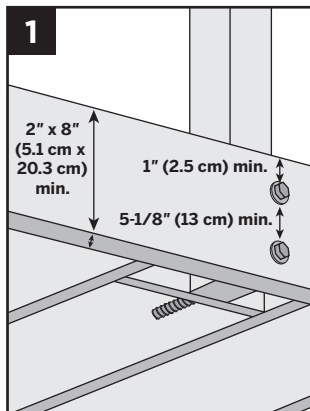


Read all instructions BEFORE installation.

Important: Post sleeves are **NOT** to be cut for this design style.

Installing Pressure-Treated Posts

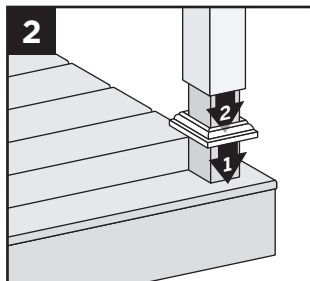
- » Select Railing Kits are designed for posts to be installed at maximum of 6' or 8' (1.8 m or 2.4 m) ON CENTER depending on the length being used. (Note: smaller spans are allowed).
- » Attach posts using 1/2" (1.3 cm) carriage bolts.
- » Minimum joist size is 2" x 8" (5.1 cm x 20.3 cm).
- » Top bolts must be 1" (2.5 cm) from tops of joists.
- » Bottom bolts must be 5-1/8" (13 cm) from top bolts.



NOTE: Blocking **MUST** added for extra strength.

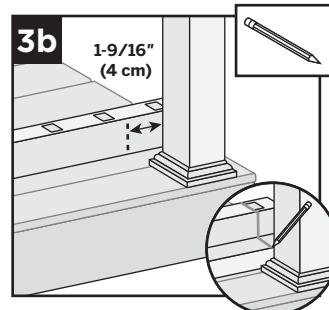
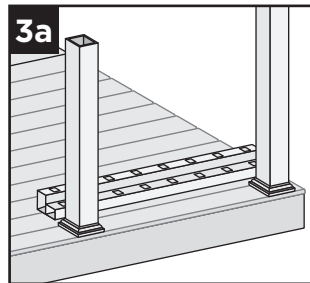
Installing Post Sleeve Skirts and Post Sleeves

2. Slide post sleeve skirt over post and down to rest on decking surface. Slide post sleeve over post and position inside post sleeve skirt.



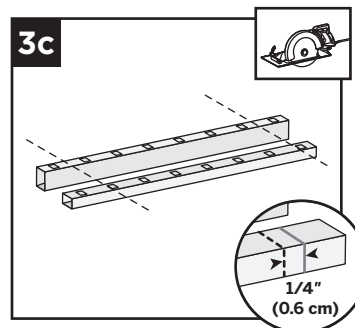
NOTE: Shims can be used to plumb post sleeves.

Cutting Railings



- 3a. Position bottom and top rails between posts, ensuring baluster holes are lined up and spaced evenly.
- 3b. Also allow for a minimum of 1-9/16" (4 cm) on each end of rail for bracket placement AND baluster clearance. Mark rails at intersection of rail and post.

- 3c. Cut each end of both bottom and top rails 1/4" (0.6 cm) shorter than mark on each end to allow for fit into brackets.

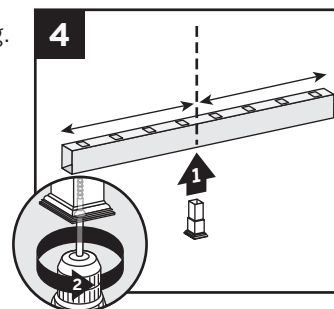


NOTE: After cutting this still allows enough space for bracket placement.

Attaching Foot Block to Bottom Railing

NOTE: REFER TO DETAILED INSTRUCTIONS INCLUDED WITH FOOT BLOCK PRIOR TO INSTALLATION OF RAILING SECTION AS THESE INCLUDE OTHER REQUIRED STEPS FOR PROPER INSTALLATION.

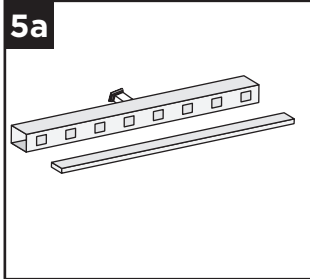
4. Invert the bottom railing. Center foot block on bottom rail and attach. **DO NOT** extend foot block.



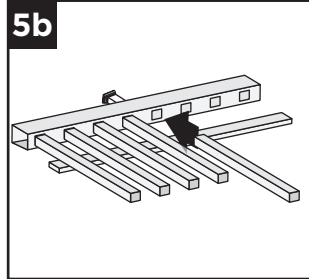
HOW TO INSTALL TREX SELECT™ RAILING/CONTINUED

TREX SELECT™

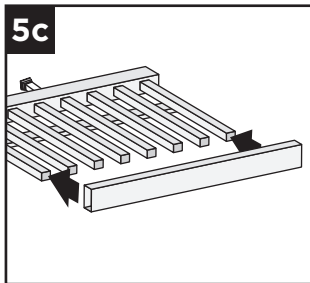
Assembling Railing Section



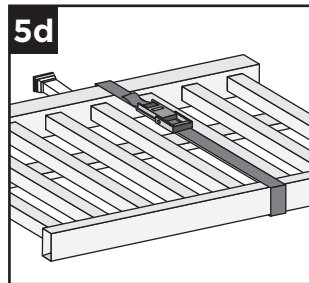
5a. On clean flat surface lay bottom railing on its side. Make sure to allow enough room for installation of balusters and top rail. Place a scrap piece of 1" (2.5 cm) decking board running parallel to bottom rail for support when installing balusters.



5b. Insert balusters into bottom rail slots as far as they will go, allowing the balusters to also rest on the decking board.



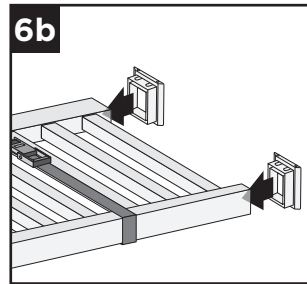
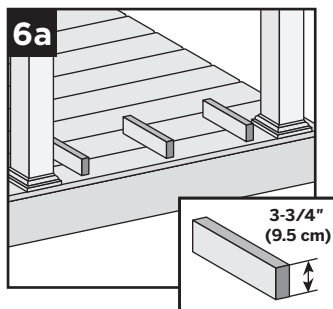
5c. Attach top rail to balusters, feeding each baluster into required slots. Start on one end and work towards the other.



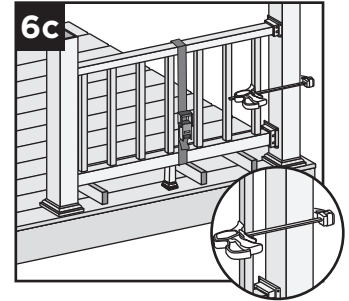
5d. To help temporarily secure the railing section together, place a ratchet strap around the top and bottom rail and tighten until snug. **DO NOT OVERTIGHTEN AS YOU CAN BEND THE RAILING.**

Installing Railing Section to Posts

6a. Using scrap material (i.e. 2 x 4s, decking boards, etc.) cut at least three support blocks at 3-3/4" (9.5 cm) in height. Place one each on decking surface beside each post and one near center of span.

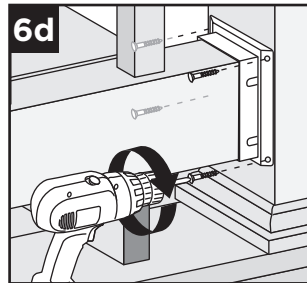


6b. Slide brackets on each end of both top and bottom railing.

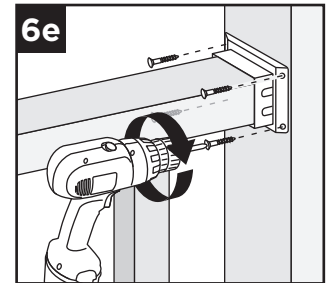


6c. Lift secured railing section up, and **CENTER** this section in between the spanned posts on pre-positioned support blocks.

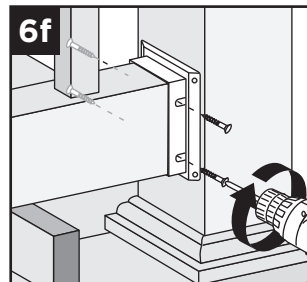
NOTE: To help stabilize railing section use a quick-grip clamp (or other type of clamp) and clamp the first baluster to post sleeve. (**DO NOT OVERTIGHTEN CLAMP.**)



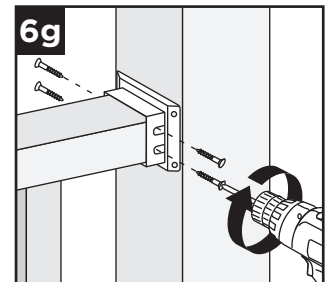
6d. Install bottom bracket (both sides) to post using four #8-10 x 2" (5.1 cm) screws per bracket (provided).



6e. Install top bracket (both sides) to post using four #8-10 x 2" (5.1 cm) screws per bracket (provided).



6f. Install bottom bracket (both sides) to railing using four #10 x 1" screws per bracket (provided).



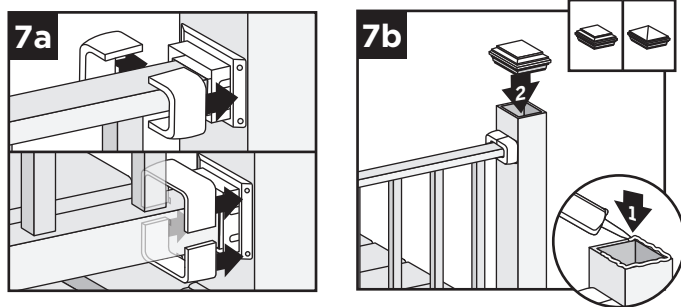
6g. Install top bracket (both sides) to railing using four #10 x 1" screws per bracket (provided).

TREX SELECT™ RAILING

Installation Instructions

HOW TO INSTALL TREX SELECT™ RAILING/CONTINUED TREX SELECT™

Attaching Bracket Covers and Post Caps



- 7a. Snap bracket covers over each bracket.
7b. Secure post caps with silicone or PVC adhesive.

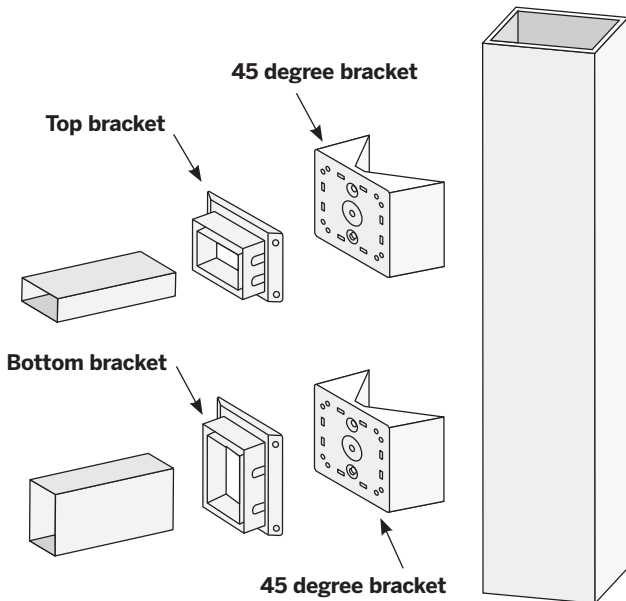
NOTE: Clean-up any excess adhesive before drying.

HOW TO INSTALL 45 DEGREE ADAPTOR - HORIZONTAL APPLICATIONS ONLY

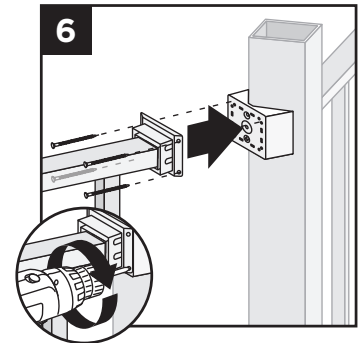
TREX SELECT®

Read all instructions BEFORE installation.

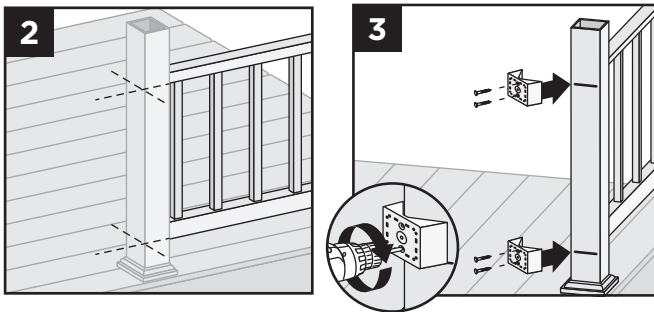
PARTS



4. Install footblock to bottom railing as stated in previous instructions. See page 2.
5. Assemble railing section as stated in previous instructions. See pages 2-3.
6. Install railing section to post as stated in previous instructions. See page 3. However use longer screws that were provided with adaptor to attach brackets thru adaptor into posts.
7. Install brackets to railing as stated in previous instructions. See page 3.
8. Attach bracket covers and post caps as stated in previous instructions. See page 3.



1. Measure, cut, and assemble railing sections as per instructions listed on pages 2-3.



2. Locate placement of railing section so that this lines up with horizontal railing heights.
3. Install 45 degree angle bracket onto post using provided hardware.

TREX SELECT® RAILING

Installation Instructions

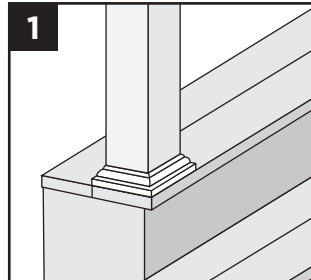
HOW TO INSTALL TREX SELECT™ STAIR RAILING

Read all instructions **BEFORE** installation.

NOTE: All Select railings work **ONLY WITH STAIR SLOPES OF 32°-37°**.

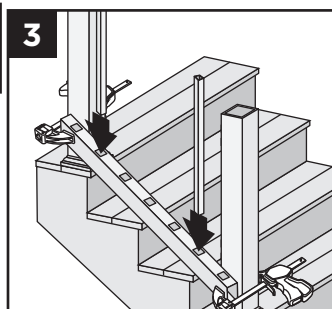
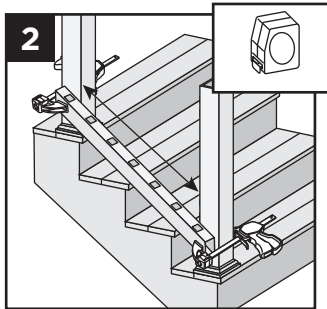
Installing Posts, Post Sleeve Skirts, and Post Sleeves for Stair Rails

1. Install posts, post sleeve skirts, and post sleeves according to standard Select railing instructions.

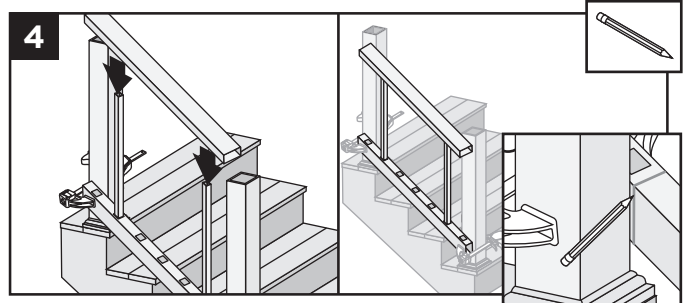


- » In most cases, a post and post sleeve longer than 39" (99.1 cm) will be needed on the lower section of stair rail to accommodate stair angle.
- » Make sure top and bottom posts for stairs are installed at nose of each tread.

Measuring and Cutting Railings

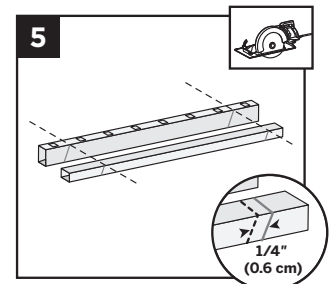


2. Set bottom stair railing along the nose of the stair treads, ensuring the baluster holes are spaced evenly. Also allow for a minimum of 1-9/16" (1.4 cm) on each end of rail for bracket placement AND baluster clearance. Use clamp to hold bottom stair rail in place.
3. Place two balusters into lower rail at each end closest to post.



4. Position top rail onto balusters and **ENSURE** that balusters are parallel with post. Mark both bottom and top stair rail at each intersection. Mark the side of each railing to ensure that proper angle is cut for attachment.

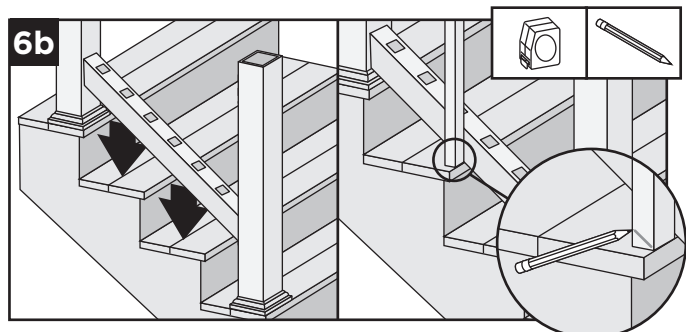
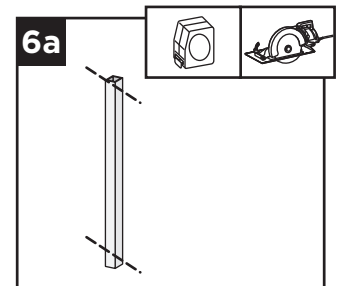
5. Cut each end of both bottom and top stair rails 1/4" (0.6 cm) shorter than mark on each end to allow for fit into bottom rail brackets.



NOTE: Top rail is shown inverted.

Cutting Balusters on Angle (OPTIONAL)

- 6a. In order for balusters to seat properly (depending on the angle of the stair railing), the balusters may need to be trimmed to match the angle of the bottom and top railing.



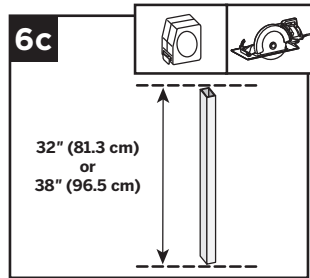
- 6b. Set bottom railing on nose of stair treads and set baluster at 90 degrees on the outside of the railing, mark and measure the angle.

NOTE: Measure, mark, and cut a scrap board to ensure you have proper angle **BEFORE** cutting balusters on angle.

HOW TO INSTALL TREX SELECT™ STAIR RAILING/CONTINUED

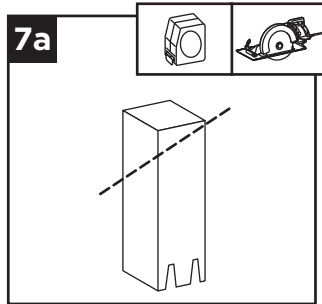
TREX SELECT™

- 6c. Cut the **VERY END** of baluster, both top and bottom, making sure that point to point measurement of the baluster remains at either 32" (81.3 cm) or 38" (96.5 cm) for 36" (91.4 cm) rail heights or 38" (96.5 cm) for 42" (106.6 cm) rail heights.

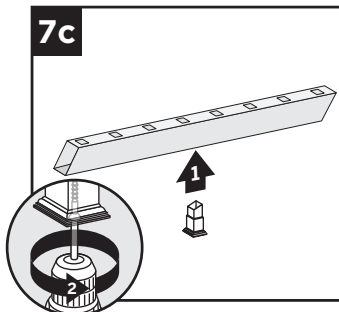
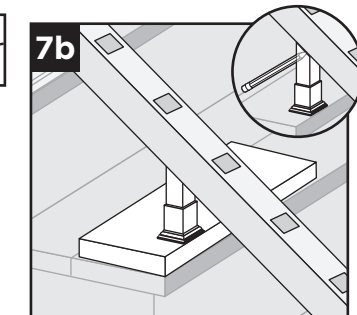


Attaching Footblock to Bottom Railing

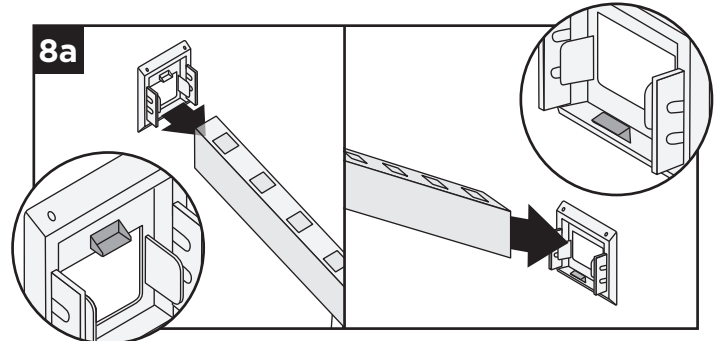
- » **REFER TO DETAILED INSTRUCTIONS INCLUDED WITH FOOT BLOCKS PRIOR TO INSTALLATION OF STAIR RAILING SECTION AS THESE INCLUDE OTHER REQUIRED STEPS FOR FOOT BLOCK INSTALLATION.**



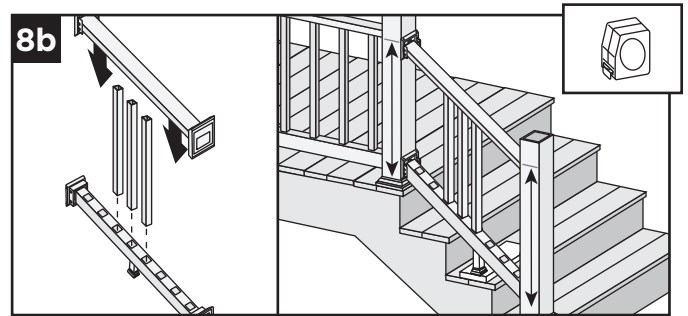
- 7a. For stair applications, cut the section of foot block at an angle to match rail. Refer to foot block instructions for specific information on how to do this.
- 7b. Place scrap deck board at nose of stair tread, and place footblock on top of scrap board near the nose of the tread. Position bottom stair rail on stair tread and mark the underside of the bottom stair rail for location of footblock.
- 7c. Invert bottom rail. Center footblock on bottom rail and attach at marked position. **DO NOT** extend foot block.



Attachment of Bottom Rail to Post

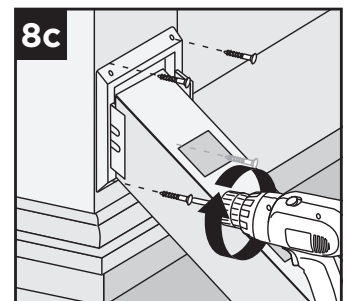


- 8a. Slide bottom stair brackets on bottom rail on each side. Top bracket must have tab on bracket facing up. Bottom bracket must have tab facing down.



- 8b. Assemble a few of the balusters into the bottom and top railings (make sure balusters are setting at 90 degrees) and set this on scrap material clearing the stair treads to determine where bracket locations need to be. Remember in most cases, a post and post sleeve longer than 39" (99.1 cm) will be needed on the lower section of stair rail to accommodate stair angle.

- 8c. After locating appropriate position for railing section remove top rail and balusters and attach bottom stair bracket (both sides) to post using four #8-10 x 2" (5.1 cm) screws per bracket (provided). Footblock can be extended at this time.



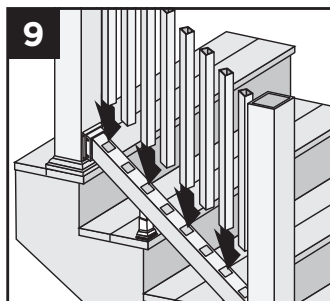
TREX SELECT® RAILING

Installation Instructions

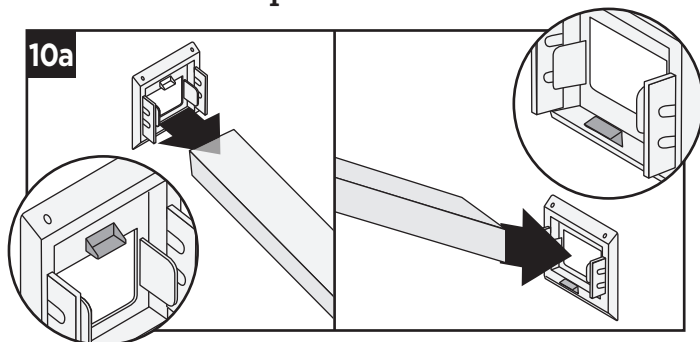
HOW TO INSTALL TREX SELECT™ STAIR RAILING/CONTINUED TREX SELECT™

Install Balusters

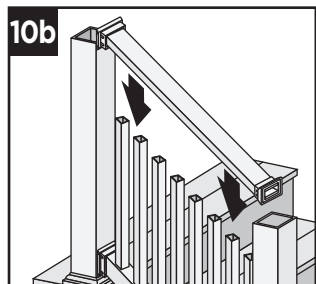
9. Slide balusters into bottom rail.



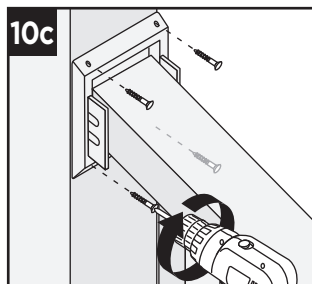
Attachment of Top Rail to Post



- 10a. Slide top stair brackets on top rail on each side. Top bracket must have tab on bracket facing up. Bottom bracket must have tab facing down.

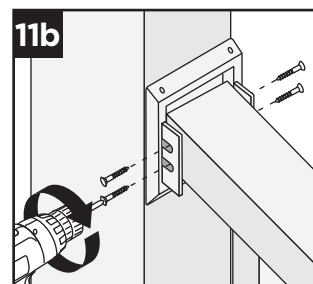
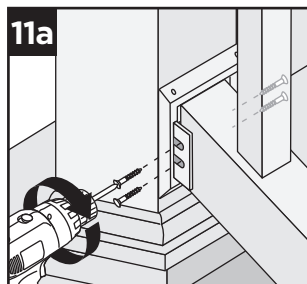


- 10b. Place top rail onto balusters, allowing the top rail to rest on the surface of the balusters.



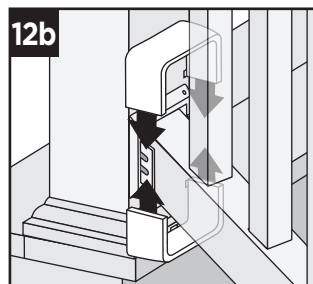
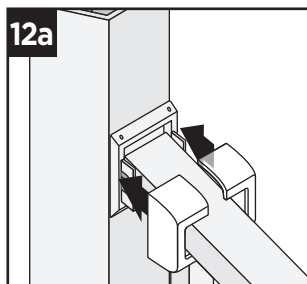
- 10c. Attach top stair bracket (both sides) to post using four #8-10 x 2" (5.1 cm) screws per bracket (provided).

Attachment of Bottom and Top Brackets to Rails

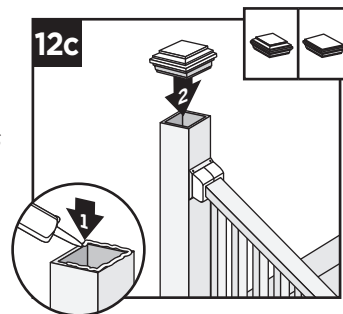


- 11a. Install bottom stair bracket (both sides) to railing using four #10 x 1" screws per bracket (provided).
11b. Install top stair bracket (both sides) to railing using four #10 x 1" (2.5 cm) screws per bracket (provided).

Attaching Bracket Covers and Post Caps



- 12a. Snap bracket covers over top rail bracket.
12b. Snap bracket covers over bottom rail bracket.
12c. Secure post caps with silicone or PVC adhesive.



NOTE: Clean-up any excess adhesive before drying.