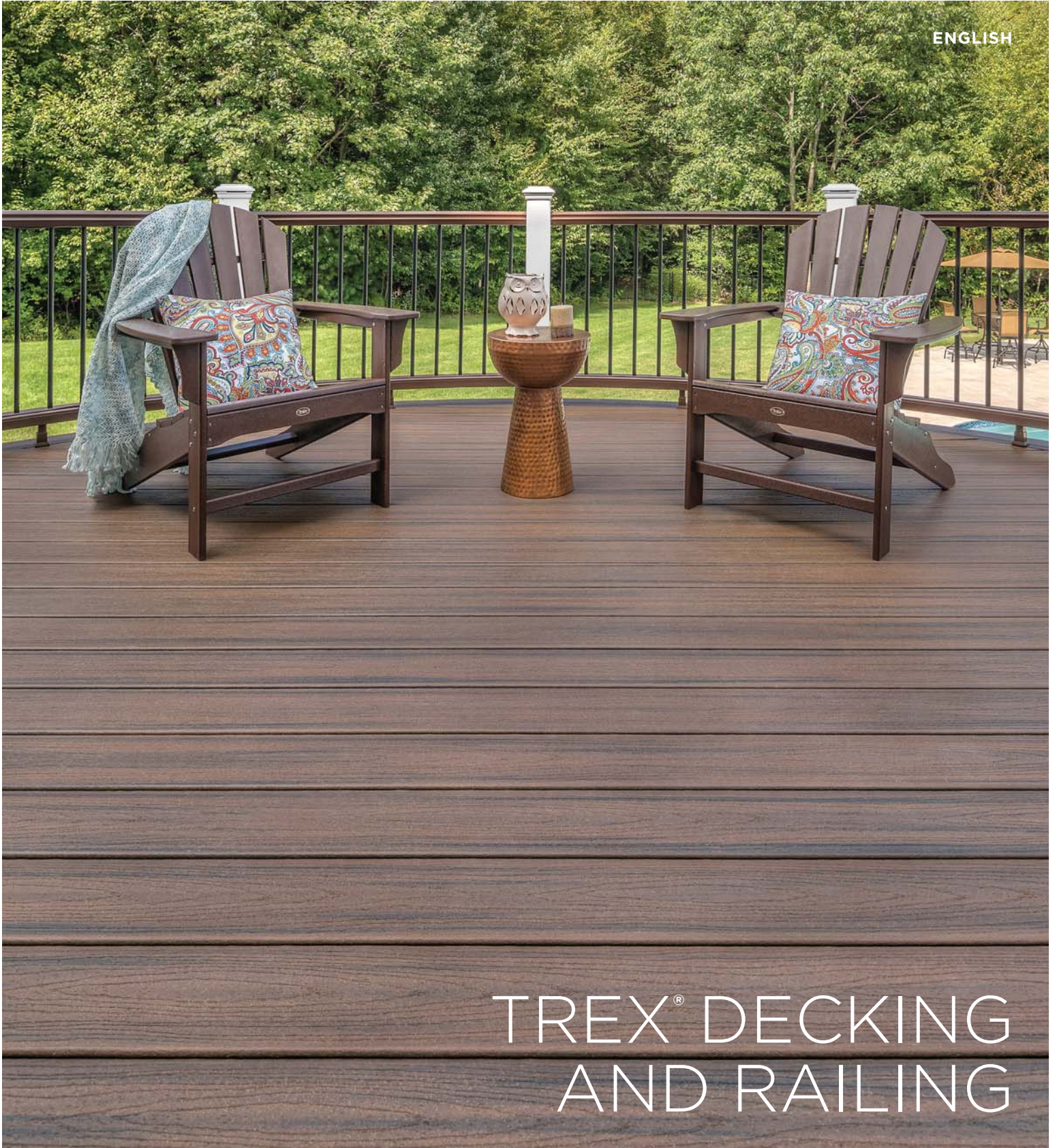




2016 INSTALLATION GUIDE

ENGLISH



TREX® DECKING AND RAILING

CHANGES FOR 2016 INSTALL GUIDE:

- » **Page 5** – Added new Trex Hideaway® Universal Fastener Collated System
- » **Page 6–7** – Care and Cleaning Guide: Added information about jobsite storage and how to clean hard water stains
- » **Page 11** – Planning Ahead: Included information about Trex® Outdoor Storage™
- » **Pages 14–16** – Trex® DeckLighting™: Removed 5A Transformer and replaced with 8.3A Transformer; Added additional warnings in regards to installation methods
- » **Page 13** – Trex Decklighting: Updated Helpful Tips section
- » **Pages 18–20** – Trex® LandscapeLighting™: Removed 5A Transformer and replaced with 8.3A Transformer; Added section for Trex Dimmer Remote Programming
- » **Page 17** – Trex Landscape Lighting: Updated Helpful Tips section
- » **Pages 21–24** – Added information about Trex Reveal® lighting
- » **Page 26** – Decking & Fascia Recommended Fasteners: Updated to add new decking and new fascia fasteners
- » **Page 27** – Trex Fascia® Installation Recommendations: Updated to provide more clarification
- » **Page 29** – Added new 2" screw recommendation when using 1 1/2" framing for Rooftop and Sleeper Deck Systems
- » **Page 32** – Stair Spanning changed on the Select product
- » **Pages 41–42** – Added information about Concrete Post Mounts
- » **Pages 43–50** – Added information about Joist Post Mount(s)
- » **Pages 56** – Trex Transcend® Railing: Included use of Select® decking board for Trex Transcend Cocktail Railing
- » **Pages 69–70** – Trex Reveal® Post: Removal of 2x2 post; Included IRC requirements if using Reveal Post
- » **Pages 93–94** – Trex Aluminum Gate: Included maximum gate width measurement
- » **Page 97–101** – Added information about Reveal panel installation

NEED HELP?

Trex provides a variety of valuable resources to answer your questions or concerns. For additional assistance, check out:

» **Trex.com**

Here you will find a wealth of useful information on Trex's extensive products including: installation, care and cleaning instructions and videos, technical help, and FAQs. You'll also find inspiring photos of deck projects, steps to help you plan and start your project, and tips for selecting the right deck builder. At **trex.com**, you can request information, register your warranty, and reach out to customer service representatives who can answer even more questions.

- » Call **1-800-BUY-TREX (1-800-289-8739)** and speak to a technical support representative who can answer your questions.
- » Email your question or concern to **question@trex.com** and we'll get back to you quickly.

Refer to **www.trex.com** for up-to-date installation and technical documents that may not be found in this printed guide.

 This symbol indicates text continues to next page.

ON THE COVER

decking: Transcend in Spiced Rum

railing: Transcend in Vintage Lantern and Classic White
with round aluminum balusters in Charcoal Black

NOTE: Construction methods are always improving. Please refer to www.trex.com for the most up-to-date installation requirements.

TREX INSTALLATION GUIDE

CONTENTS

SECTION ONE: General Information

Safety	5
Tools	5
Care and Cleaning	6
Glossary of Terms	8

SECTION TWO: Planning Ahead

Trex Decking	10
Railing (Including ADA Handrail)	10
Trex Lighting	10
Trex® RainEscape® Drainage System.....	10
Installing Hot Tubs, Planters, and Seating.....	10
Installing Fireplaces and/or Fire Pits	10
Installing a Pergola.....	11
Installing Trex® Spiral Stairs™.....	11
Installing Trex® Outdoor Storage™.....	11
Special Patterns	11

SECTION THREE: Lighting

How to Install Trex® DeckLighting™

Parts List/Tools Needed.....	13
Lighting and Wiring Overview.....	13
Helpful Tips	13
General Information	14
Planning.....	14
Installing Wiring	14
Making Connections	14
Timer Operation Instructions.....	15
Installing Post Cap Lights	15
Installing Deck Rail Lights.....	15
Installing Riser Lights.....	16
Installing Recessed Deck Lights	16

How to Install Trex® LandscapeLighting™

Parts List/Tools Needed.....	17
Helpful Tips	17
How to Install Trex Well Light, Path Lights, and Multifunction Lights	18
How to Install Trex Spotlight.....	19
How to Program Dimmer Remote.....	20

How to Install Trex Reveal® Post Cap Light

Parts List/Tools Needed.....	21
Helpful Tips	21
Installing Post Cap Lights	21

How to Install Trex Reveal® Post Lamp

Parts List/Tools Needed.....	23
Helpful Tips	23
Installing Post Lamps.....	23

SECTION FOUR: Decking

Decking and Fascia Recommended Fasteners	26
Trex® Fascia Installation Recommendations.....	27
Framing and Fastening Tips	28
Dock Applications.....	28
Rooftop and Sleeper Deck Systems.....	29
Code Compliance.....	30

Gapping and Overhang.....	31
Stairs	32

How to Install Decking

Tips for Installing a Trex Hideaway® Hidden Fastening System (Stainless Steel or Universal).....	33
Installing Angled Deck Boards in Corners	33
How to Butt Seams.....	33
Routing Square Edged Boards.....	33
How to Install Trex Hideaway Universal Hidden Fasteners	
Parts List/Tools Needed	34
Installing Start Clips and First Board.....	34
Installing Universal Fasteners	34
Installing Second Board.....	34
Complete Installation.....	34
Installing Last Board	
Option 1: Using Fascia Board	34
Option 2: With Deck Board Overhang.....	35
Option 3: Face Screwing both Decking and Fascia... ..	35
How to Install Trex Escapes® Boards with Trex Hideaway Universal Fasteners	35
How to Replace Trex Boards Installed with Trex Hideaway Universal Fasteners	35
How to Install Stair Treads	36
Option 1: Face Screw	36
Option 2: Using 2x4 Wood Support Blocks.....	35
How to Install Trex Transcend® Porch Floorboards	
Parts List/Tools Needed	37
Installing Start Clips and First Porch Board	37
Installing Trex Hideaway Universal Hidden Fasteners ..	37
Installing Second Porch Board.....	37
Installing Last Porch Board	38
Option 1: Using Fascia Board	38
Option 2: With Porch Board Overhang	38
How to Install Porch Stair Treads	38
Option 1: Hidden Fasteners and Face Screwing	38
Option 2: Hidden Fasteners and 2x4 Foot Blocks	38
Location and Installation of Surface Mount	
Post – Decking.....	39
Parts List/Tools and Materials Needed	39
How to Install Post Mounts on Pressure-Treated Wood Framing	39
Corner Post Installation	39
Line Post Installation	40
How to Install Guide Blocks	40
How to Install Railing System of Choice	41
Location and Installation of Post Mounts – Concrete	41
Parts List/Tools Needed	41
Pre-drill Holes	41
How to Install Guide Blocks	42
How to Install Railing System of Choice	42
How to Install Joist Mount Posts	
Parts List/Tools Needed	43
Inside Mount	
Front Rim Plate – Between Joists	44
Front Rim Plate – Next to Joist.....	45
Side Joist	46

TREX INSTALLATION GUIDE
CONTENTS/CONTINUED

Joist Mount Post – Inside Mount/Continued
 Corner47
 Fascia Mount
 Front Rim Plate – Next to Joist..... 48
 Side Joist – With Blocking 49
 Outside Frame Corner..... 50

SECTION FIVE: Railing

Trex Transcend® Railing

Parts List/Determining Balusters Needed..... 52
 Trex Transcend Railing Configurations 53
 How to Install Standard Railing 54
 How to Install Cocktail Railing 56
 How to Install Traditional Railing.....57
 How to Install Round or Square Aluminum
 Balusters..... 58
 How to Install Standard Glass Panel Railing 59
 How to Install Cocktail Style Glass Panel Railing 60
 How to Install Traditional Style Glass Panel Railing 62
 How to Install On-An-Angle Railing 63
 How to Install Crown and Universal Bird's
 Mouth Railing 64
 How to Install Crown and Universal Stair Railing 65

Trex Reveal® Railing

Parts List/Determining Balusters Needed..... 68
 Installing Standard Reveal Posts and/or Reveal
 Crossover Posts on Decking or Concrete 69
 Installing Pressure-Treated Post, Post Sleeves,
 and Skirts to Use with Reveal Railing 70
 Installing Reveal Posts on Concrete 70
 Bracket Hardware – Horizontal Applications 71
 How to Install Horizontal Railing72
 How to Install Horizontal Swivel Brackets.....78
 How to Install Horizontal Swivel Railing79
 How to Install Foot Blocks – Horizontal Railing..... 81
 Bracket Hardware – Stair Applications 82
 How to Install Reveal Stair Posts and Stair Railing..... 84
 Attaching Stair Brackets (Fixed Stair, Stair Swivel,
 and Compound Swivel) to Reveal Posts and
 Pressure-Treated Posts and Post Sleeves 85
 How to Install Aluminum Gate..... 93

Trex Reveal® Panels

Parts List/Tools Needed..... 95
 Bracket Hardware – Horizontal Applications 96
 How to Install Panels97
 How to Install Foot Blocks..... 101

Trex Select® Railing

Parts List/Determining Balusters Needed.....102
 How to Install Trex Select Railing103
 How to Install Trex 45° Adaptor – Horizontal
 Applications Only.....106
 How to Install Trex Select Stair Railing107

Trex Aluminum ADA Compliant Handrail

ADA Handrail Guidelines..... 110
 ADA Railing Profiles.....111

How to Install Trex Aluminum ADA Compliant
 Handrail 112
 90° Wall Return..... 112
 Wall Mount..... 112
 Rail-to-Rail Connections/Internal Connector 112
 Elbows (90°, 36°, 34°, 31°, 5°) 113
 Handrail Return 180°..... 113
 Corner Mount..... 113

SECTION SIX: Warranties

Trex Transcend®, Trex Enhance®, Trex Select®, and Trex®
 Universal Fascia Limited Fade & Stain Warranty 115
 Trex® Limited Warranty117
 Trex Reveal® Railing Limited Warranty..... 118

Color Palette Inside Back Cover

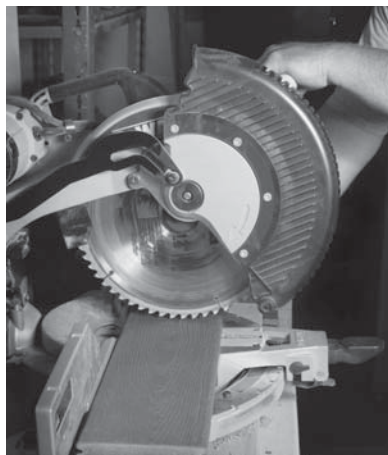
SAFETY

When working on any construction project, you should wear protective clothing and safety equipment. Wear safety glasses, gloves, a dust mask and long sleeves, particularly when cutting in confined spaces.

TOOLS

You can create intricate shapes, profiles, and patterns with Trex. Most installments require no special tools. For best results, use carbide-tipped blades and router bits.

When using a miter saw, we recommend using the Trex Blade™*. This comes in 3 different sizes and is ideal for cutting all our decking and railing products (these are not recommended for cutting Trex Elevations®). Refer to www.trex.com for more information.

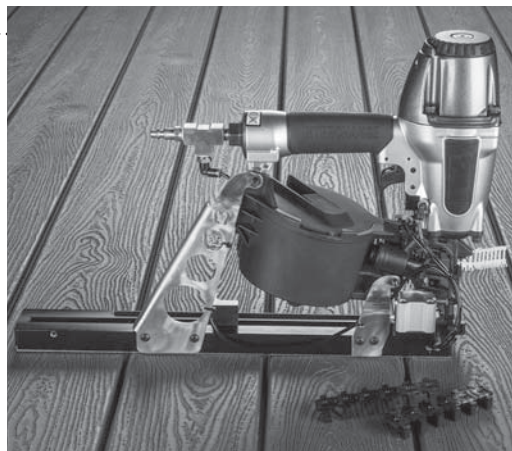


Install Trex recommended fasteners with standard power drills or approved screw guns.



*Trex Blade™ is manufactured and sold by Freud Tools, Inc. under a Trademark License Agreement with Trex Company, Inc.

Trex decking and railing are heavier and more flexible than wood. **DO NOT** try to lift the same quantity of Trex boards as you would traditional lumber. Go to www.trex.com for Safety Data Sheets (SDS).

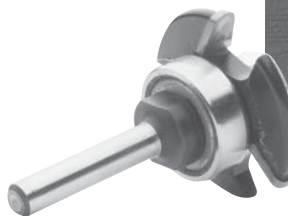
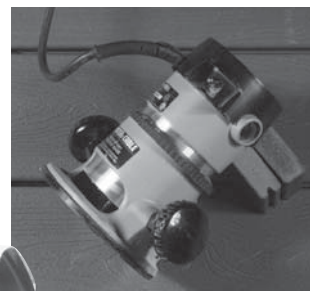


The Trex Hideaway® Universal Fastener Collated Clip System is designed specifically to work with the Trex Hideaway Universal Hidden Fastener. This will dramatically decrease the time it takes to install Trex decking. The kit includes 450 hidden fasteners and collated screws.

If your choice is to use the metal Trex Hideaway Hidden Fasteners, using the pneumatic gun by TigerClaw®* is a terrific option. This will allow for a quicker install time. Trex Gun Pail includes 900-count connector clips and TC-SG collated pneumatic screws.



Trex routs beautifully to give extremely crisp edges. The groove cutter/router bit is used with the Trex Hideaway fastening system.



⚠ CAUTION

DO NOT rout balusters. Routing will change the surface of Trex products.

*Tiger Claw® is a registered trademark of Tiger Claw, Inc.

TREX TRANSCEND®, TREX ENHANCE®, AND TREX SELECT® CARE AND CLEANING GUIDE

All exterior building materials require cleaning. Generally, soap and water is all that is required to clean Transcend, Enhance, and Select products. *For further information, see below.*

PROBLEM	SOLUTION
Dirt and Debris	The affected area should be sprayed off with a hose to remove surface debris. Use warm soapy water and a soft bristle brush to remove dirt and debris from the embossing pattern.
Hard Water Staining	Hard water is water with a high amount of mineral deposits like lime, silica and calcium. When the water dries, deposits are left behind, leaving unsightly spots on surfaces. This is not a defect of Trex products but an issue with the water itself. Generally these deposits can be cleaned with white vinegar on decking surfaces or use of Magic Eraser® on railing surfaces. Rinsing is required so care should be taken to not use hard water for this purpose, and if it must be used, dry with a cloth or use a blower to dry surfaces.
Chalk Lines	Most colored chinks are permanent and may discolor the surface. Use only Irwin Strait-Line®* Dust-Off Marking Chalk (purple), available at Irwin.com
Tannins Due to Debris	Remove all debris from the deck using a hose or broom. Once the deck surface is dry, apply a deck "brightener"*** to the deck as directed by the manufacturer. Deck Brighteners contain oxalic acid, which will also remove tannins.
Ice and Snow	A plastic shovel may be used to remove snow from the deck. Use calcium chloride or rock salt to melt the snow and ice from the deck surface.
Oil, Grease, and Food	All food spills should be removed as soon as possible. The surface must be cleaned within seven days to maintain the stain warranty. To remove, spray off with a hose and use warm, soapy water and a soft bristle brush to remove spills from the embossing pattern.
Mold and Mildew	If debris such as pollen and dirt is allowed to remain on the deck surface, mold can feed on the biofilm. Using a hose and warm, soapy water with a soft bristle brush is recommended to remove the food source and mold.
Using a Pressure Washer (Concrete, Stucco, or Ground-in Construction Dirt)	A pressure washer with no greater than 3100 psi*** that has a fan attachment/adjustment and soap dispenser may be used to remove dirt, concrete dust, or other types of construction dirt. Spray deck with soap, then follow by gently scrubbing each deck board with a soft bristle brush. Spray/rinse each individual deck board using a fan tip no closer than 8-in (203 mm) from the decking surface. RINSE THOROUGHLY. If dirty water from cleaning is left to dry, this will cause a film to remain on the decking surface.
Maintaining Transcend and Select Railing	NEVER use acetone or other solvents on Trex Transcend or Select railing to maintain the beauty of the surface. For color transfer issues (from attachment of baluster spacer), use Mr. Clean® Magic Eraser® Original or Magic Eraser® Extra Power**** to help remove this. For small surface scratches, marks, or scuffs, use Dupli-Color Scratch Seal™ Clear Sealer Pen.*****



TREX TRANSCEND®, TREX ENHANCE®, AND TREX SELECT® CARE AND CLEANING GUIDE/CONTINUED

PROBLEM	SOLUTION
Job Site Storage	<p>Store decking on a flat level surface, and ALWAYS use proper supports (dunnage). DO NOT store directly on the ground. When stacking decking bundles, supports (dunnage) should start approximately 8-in (203 mm) from each end and be spaced approximately 2-ft (0.61m) on center. In addition, supports (dunnage) should line up vertically/perpendicular to the decking product. Adjust support blocks (dunnage) accordingly if bundles are loose. For Select decking, 1x12 and 1x8 products, the maximum stack height is 12 bundles. For all other decking products maximum stack height is 14 bundles (IMPORTANT TO NOTE THAT PROPER DUNNAGE SPACING MUST BE IN PLACE FOR THESE HEIGHTS). When stacking multiple bundles, ensure that dunnage lines up vertically down through each stack. ALWAYS cover decking products on site until ready to be installed.</p>

*Strait-Line® is a registered trademark of Irwin Industrial Tool Company.

**Use of products containing bleach or acid will lighten the surface of Trex. Use in an inconspicuous area to determine whether you like the effect. Neither product will affect the structural integrity of Trex.

***Use of a pressure washer greater than 3100 psi could damage the boards and void the warranty.

****Mr. Clean® and Magic Eraser® are registered trademarks of The Procter and Gamble Company.

*****Scratch Seal™ Clear Sealer Pen is a registered trademark of Dupli-Color Products Company.

NOTES:

- » Refer to www.trex.com to view a general care and cleaning video for Transcend, Enhance, and Select decking.
- » Refer to www.trex.com for a care and cleaning guide for Trex Early-Generation Composite and PVC Decking.

TREX REVEAL® RAILING CARE AND CLEANING GUIDE

Maintaining the appearance of your Trex Reveal railing is important. The occasional wash is recommended as over time your Reveal railing may show signs of weathering as a result of exposure to the elements. The frequency of cleaning will depend on the environment and exposure to various types of elements.

For installations where the atmosphere is influenced by bodies of salt water or other contaminant conditions, cleaning is required every 6 to 9 months. Failure to adhere to the required cleaning guidelines will void the Trex Limited Warranty with respect to any condition resulting from such failure. For purposes of any warranty claim, you should retain documentation of the cleaning date, cleaning method used, brand and amount of chemical used, and invoice from cleaning company (or a receipt for chemicals used).

Regular cleaning may minimize the effects of weathering and remove dirt, grime and other build-up. The best method of maintaining the appearance of your Reveal railing is to occasionally wash it using a solution of warm water and a non-abrasive, pH neutral detergent solution. The railing surface should be thoroughly rinsed after cleaning to remove all residues. Use a soft white cloth, sponge or a soft bristle brush.

DO NOT clean Trex Reveal railing with solvents such as thinners or solutions containing chlorinated hydrocarbons, esters or ketones.

The following cleaners are recommended for cleaning Trex Reveal railing:

- » Formula 409® Cleaner Degreaser/Disinfectant*
- » Spray Nine® Cleaner/Disinfectant**
- » Simple Green® All Purpose Cleaner***
- » Fantastik® All Purpose Cleaner****
- » Windex® Cleaner*****

* Formula 409® Cleaner Degreaser/Disinfectant is a trademark of Clorox Company.

** Spray Nine® All Purpose Cleaner/Disinfectant is a trademark of Illinois Tool Works Inc.

*** Simple Green® All Purpose Cleaner is a trademark of Sunshine Makers Inc.

**** Fantastik® All Purpose Cleaner is a trademark of SC Johnson & Son Inc.

***** Windex® is a trademark of SC Johnson & Son Inc.

GLOSSARY OF TERMS

PVC High Performance Composite	Trex Escapes Trex Transcend, Trex Enhance, Trex Select
<hr/>	
Baluster	One of a number of closely spaced supports for a railing.
Baluster Spacer	A piece that snaps into top and bottom rail that gives precise spacing to the balusters.
Bird's Mouth Gasket	A 45° corner cut gasket to be used when attaching railing to the corner of a 4x4 post sleeve.
Bump Stop Tab	Part of the connector clip and allows for 1/4" (6 mm) spacing between decking boards.
Carriage Bolt	A bolt with a rounded head and a square shoulder under the head to prevent turning during installation.
Connector Clip	Hidden fastener used between deck boards to secure positioning.
Fascia	Horizontal trim board used to cover rim and end joists. May also be used for stair risers.
Foot Block	Provides support for the bottom rail and gives a finished appearance.
Joist	A horizontal structural pressure-treated board that runs from wall-to-wall, wall-to-beam, or beam-to-beam to support the deck floor and decking materials.
Lag Bolt	A large metal fastener with a hex head and screw threads that drive it into the wood.
Ledger Board	A beam supporting one end of the joists.
Nosing	The rounded front edge of a stair tread.
Pan-head Screw	Self-tapping screw with W-cut design and slightly rounded head.
Pergola	A horizontal trellis or framework, supported on round or square posts, that can carry climbing plants and provides limited cover from sunshine. It may form a covered walk.
Post Sleeve	Formed sleeve that fits over a standard pressure-treated 4x4 post.
Post Sleeve Cap	Attractive flat or pyramid shaped cap to place on top of post sleeve.
Post Sleeve Skirt	Decorative skirt that surrounds the bottom of the post and rests on surface of deck.
Rail Gasket	A gasket used to fill the gap between the railing and post.
Rail Light	Light that attaches to side of post sleeve.
Rail Support Bracket (RSB)	Innovative bracket designed for horizontal, angled, and stair railing installations.
Recessed Light	Light that is recessed so it sets flush with decking surface.
Rim Joist	A joist on either side or the end of the deck. May have stairs attached and typically opposite of the ledger board.
Riser	The vertical board nailed to a stringer.
Riser Light	Light that attaches to stair riser.
Scarf Cut	A joint used to join two pieces of decking end-to-end, usually cut at a 45° angle.
Screw Plug	A small plug to cover a screw.
Self-tapping Screw	A fastener that taps and drills its own hole and does not require a pre-drilled hole.
Shim	A wedge that is placed between two surfaces to fill in the gap.
Stair Tread	Steps or stairway boards that are the steps.
Start Clip	Metal clips used at the end of decking boards to secure them in position.
Stringer	The structural member in a stairway that supports the treads and risers.
Tempered Glass	A safety glass that is four to five times stronger than standard glass made by a process of extreme heating and cooling.
Universal Fastener	Plastic 1/4" (6 mm) self-gapping hidden fastener that has increased durability and allows for easier and faster installation than traditional fasteners.
Weather Stripping	A self-adhesive strip applied to the glass panel option to create a tight fit with top and bottom rails.



Bump Stop Tab