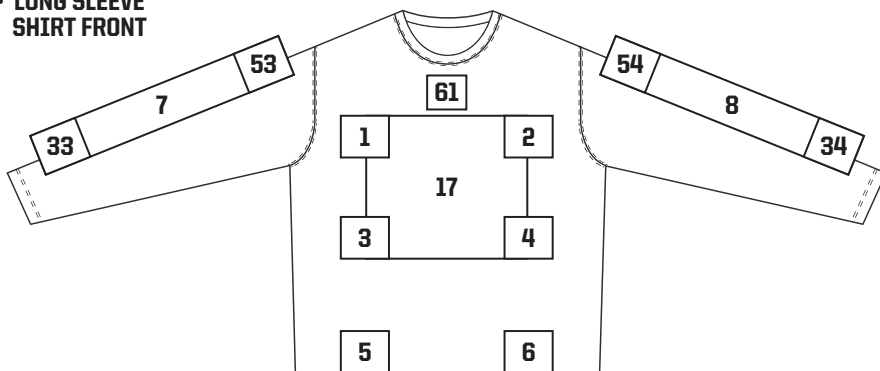


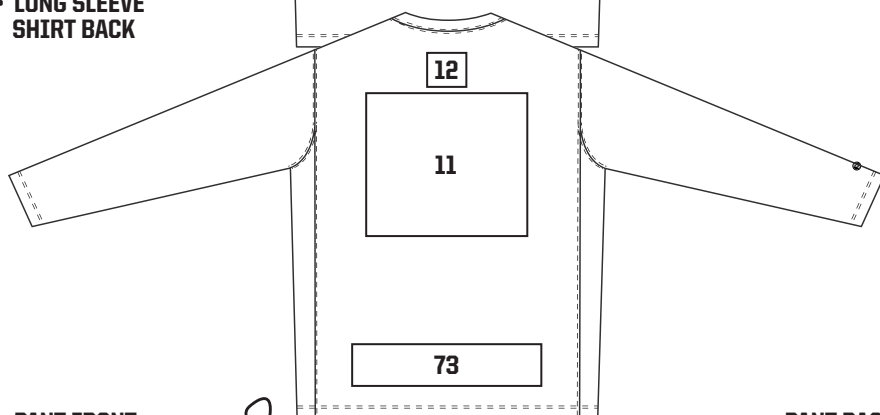
## LONG SLEEVE & PANTS

- (1) RIGHT CHEST
- (2) LEFT CHEST
- (3) RIGHT FRONT MIDDLE
- (4) LEFT FRONT MIDDLE
- (5) RIGHT LOWER FRONT
- (6) LEFT LOWER FRONT
- (7) VERTICAL RIGHT LONG SLEEVE
- (8) VERTICAL LEFT LONG SLEEVE
- (9) VERTICAL RIGHT CHEST
- (10) VERTICAL LEFT CHEST
- (11) FULL BACK
- (12) TOP BACK NECK CENTER
- (17) FULL FRONT
- (25) VERTICAL RIGHT FRONT LEG
- (26) VERTICAL LEFT FRONT LEG
- (27) LEFT SIDE PANEL PANT
- (28) RIGHT SIDE PANEL PANT
- (29) LEFT & RIGHT SIDE PANEL PANT
- (33) LOWER RIGHT LONG SLEEVE
- (34) LOWER LEFT LONG SLEEVE
- (20) RIGHT UPPER LEG FRONT
- (21) LEFT UPPER LEG FRONT
- (37) RIGHT LOWER LEG FRONT
- (38) LEFT LOWER LEG FRONT
- (53) UPPER RIGHT LONG SLEEVE
- (54) UPPER LEFT LONG SLEEVE
- (55) LEFT HIP
- (57) LEFT LOWER SIDE PANEL PANT
- (58) RIGHT LOWER SIDE PANEL PANT
- (61) CENTER FRONT NECK
- (73) LOWER CENTER BACK

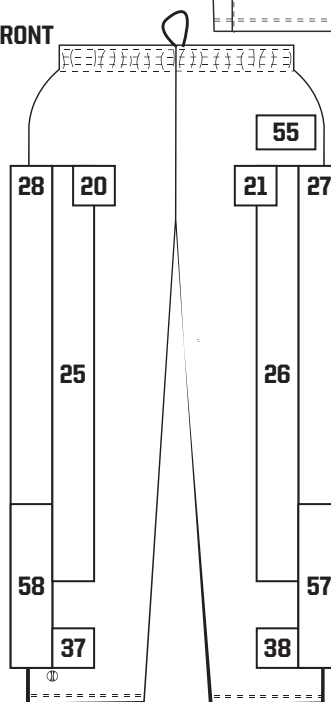
### • LONG SLEEVE SHIRT FRONT



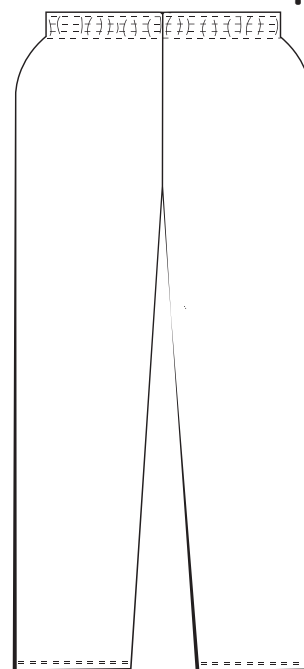
### • LONG SLEEVE SHIRT BACK



### • PANT FRONT



### • PANT BACK



## LONG SLEEVE & PANTS

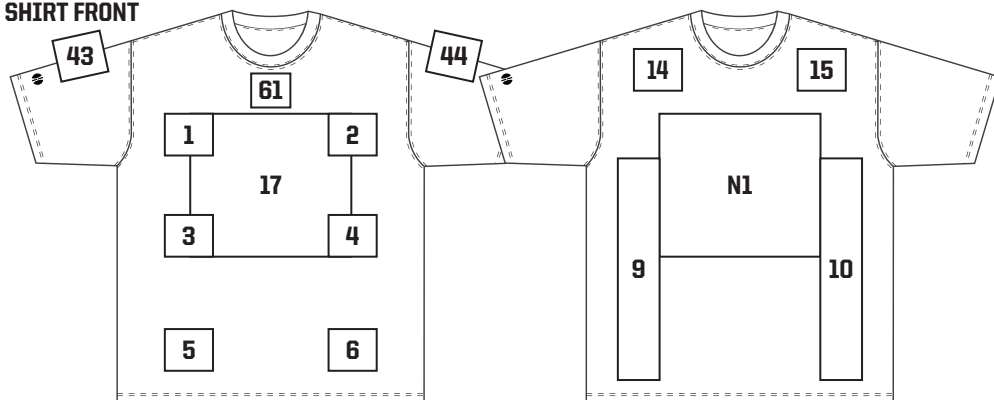
## DECORATION LEGEND // ● SP - SCREEN PRINT ● EMB - EMBROIDERY

[1]	RIGHT CHEST - CENTERED 6" DOWN FROM HIGH POINT SHOULDER TO TOP OF DESIGN	● ●
[2]	LEFT CHEST - CENTERED 6" DOWN FROM HIGH POINT SHOULDER TO TOP OF DESIGN	● ●
[3]	RIGHT FRONT MIDDLE - 1 1/2" BELOW NAME DROP TO TOP OF DESIGN	● ●
[4]	LEFT FRONT MIDDLE - 1 1/2" BELOW NAME DROP TO TOP OF DESIGN	● ●
[5]	RIGHT LOWER FRONT - 1" FROM NATURAL SIDE SEAM, 1" UP FROM HEM TO BOTTOM OF DESIGN	● ●
[6]	LEFT LOWER FRONT - 1" FROM NATURAL SIDE SEAM, 1" UP FROM HEM TO BOTTOM OF DESIGN	● ●
[7]	VERTICAL RIGHT LONG SLEEVE - 1" ABOVE HOLLOWAY "H" TO BOTTOM OF DESIGN	●
[8]	VERTICAL LEFT LONG SLEEVE - 2" ABOVE HEM TO BOTTOM OF DESIGN	●
[9]	VERTICAL RIGHT CHEST - CENTERED 6" DOWN FROM HIGH POINT SHOULDER TO TOP OF DESIGN	● ●
[10]	VERTICAL LEFT CHEST - CENTERED 6" DOWN FROM HIGH POINT SHOULDER TO TOP OF DESIGN	● ●
[11]	FULL BACK - 4" DOWN FROM COLLAR SEAM / 6" DOWN FROM COLLAR SEAM WITH HOOD TO TOP OF DESIGN (HOOD WONT COVER DESIGN)	● ●
[12]	TOP BACK NECK CENTER - 3" DOWN FROM NECK SEAM OR 1/2" BELOW HANG TAG TO TOP OF DESIGN	● ●
[17]	FULL FRONT - 3" DOWN FROM CREW NECK SEAM, 1" DOWN FROM V-NECK SEAM, 1" DOWN FROM 2 BUTTON PLACKET SEAM TO TOP OF DESIGN	● ●
[20]	RIGHT UPPER LEG FRONT - 1" OVER FROM SIDE SEAM & CENTER DESIGN WITH TOP OF INSEAM (1" AWAY FROM "H" LOGO)	● ●
[21]	LEFT UPPER LEG FRONT - 1" OVER FROM SIDE SEAM & CENTER WITH TOP OF INSEAM	● ●
[25]	VERTICAL RIGHT FRONT LEG - 1" OVER FROM SIDE SEAM TO EDGE OF DESIGN 1/2" DOWN FROM POCKET SEAM (1" AWAY FROM "H" LOGO) TO TOP OF DESIGN - IF NO POCKET CENTER DESIGN WITH TOP OF INSEAM	● ●
[26]	VERTICAL LEFT FRONT LEG - 1" OVER FROM SIDE SEAM TO EDGE OF DESIGN 1/2" DOWN FROM POCKET SEAM TO TOP OF DESIGN - IF NO POCKET CENTER DESIGN WITH TOP OF INSEAM	● ●
[27]	LEFT SIDE PANEL PANT - CENTERED ON NATURAL SIDE SEAM & TOP OF INSEAM 1/2" DOWN FROM POCKET SEAM TO TOP OF DESIGN	● ●
[28]	RIGHT SIDE PANEL PANT - CENTERED ON NATURAL SIDE SEAM & TOP OF INSEAM 1/2" DOWN FROM POCKET SEAM TO TOP OF DESIGN	● ●
[33]	LOWER RIGHT LONG SLEEVE - 1" ABOVE "H" LOGO TO BOTTOM OF DESIGN, CENTERED WITH "H" LOGO	●
[34]	LOWER LEFT LONG SLEEVE - 2" ABOVE HEM TO BOTTOM OF DESIGN	●
[37]	RIGHT LOWER LEG FRONT PANT - 1" UP FROM BOTTOM OF HEM TO BOTTOM OF DESIGN AND 1" OVER FROM NATURAL SIDE SEAM TO EDGE OF DESIGN	●
[38]	LEFT LOWER LEG FRONT PANT - 1" UP FROM BOTTOM OF HEM TO BOTTOM OF DESIGN AND 1" OVER FROM NATURAL SIDE SEAM TO EDGE OF DESIGN	● ●
[53]	UPPER RIGHT LONG SLEEVE - 2" DOWN FROM SHOULDER SEAM OR 8" DOWN FROM COLLAR TO TOP OF DESIGN	● ●
[54]	UPPER LEFT LONG SLEEVE - 2" DOWN FROM SHOULDER SEAM OR 8" DOWN FROM COLLAR TO TOP OF DESIGN	● ●
[55]	LEFT HIP - 1" DOWN FROM BOTTOM OF WAIST HEM TO TOP OF DESIGN AND 1" OVER FROM NATURAL SIDE SEAM TO EDGE OF DESIGN	● ●
[57]	LEFT LOWER SIDE PANEL PANT - 1" UP FROM BOTTOM OF SEAM TO BOTTOM OF DESIGN & CENTERED ON NATURAL SIDE SEAM	● ●
[58]	RIGHT LOWER SIDE PANEL PANT - 1" UP FROM BOTTOM OF SEAM TO BOTTOM OF DESIGN & CENTERED ON NATURAL SIDE SEAM	● ●
[61]	CENTER FRONT NECK - 3" DOWN FROM CREW NECK OR 1 1/2" DOWN FROM V-NECK TO TOP OF DESIGN	● ●
[73]	LOWER CENTER BACK - CENTERED ON BACK 2" UP FROM HEM TO BOTTOM OF DESIGN	● ●

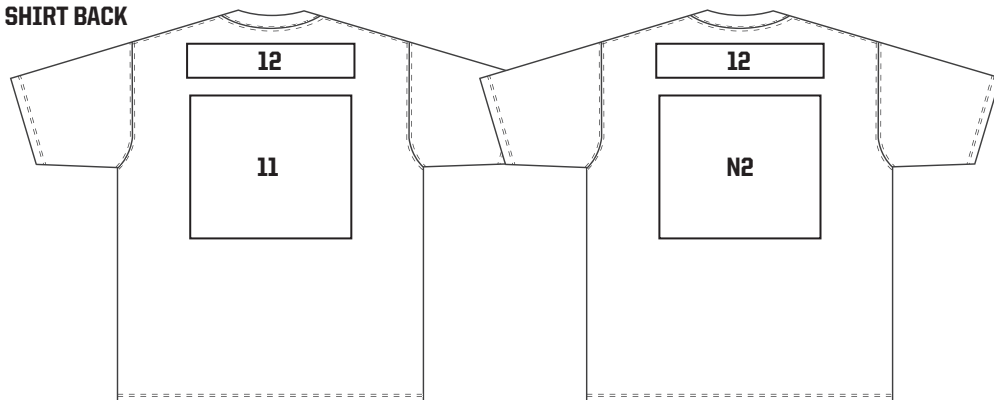
## SHORT SLEEVE & SHORTS

- (1) RIGHT CHEST
- (2) LEFT CHEST
- (3) RIGHT FRONT MIDDLE
- (4) LEFT FRONT MIDDLE
- (5) RIGHT LOWER FRONT
- (6) LEFT LOWER FRONT
- (9) VERTICAL RIGHT CHEST
- (10) VERTICAL LEFT CHEST
- (12) TOP BACK NECK CENTER
- (14) RIGHT SHOULDER
- (15) LEFT SHOULDER
- (20) RIGHT UPPER LEG FRONT
- (21) LEFT UPPER LEG FRONT
- (22) RIGHT LOWER LEG FRONT SHORT
- (23) LEFT LOWER LEG FRONT SHORT
- (30) LEFT SIDE PANEL SHORT
- (31) RIGHT SIDE PANEL SHORT
- (32) LEFT & RIGHT SIDE PANEL SHORT
- (43) LOWER RIGHT SHORT SLEEVE
- (44) LOWER LEFT SHORT SLEEVE
- (55) LEFT HIP
- (61) CENTER FRONT NECK
- (N1) FRONT NUMBER
- (N2) BACK NUMBER

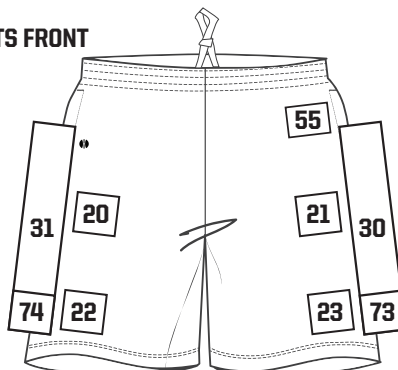
### • SHIRT FRONT



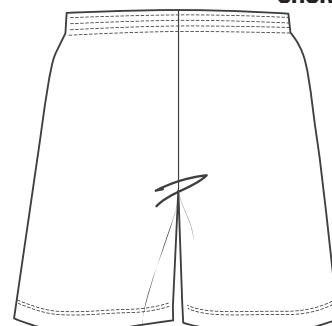
### • SHIRT BACK



### • SHORTS FRONT



### • SHORTS BACK



## SHORT SLEEVES & SHORTS

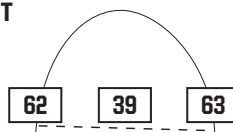
## DECORATION LEGEND // ● SP - SCREEN PRINT ● EMB - EMBROIDERY

[1]	RIGHT CHEST - CENTERED 6" DOWN FROM HIGH POINT SHOULDER TO TOP OF DESIGN	● ●
[2]	LEFT CHEST - CENTERED 6" DOWN FROM HIGH POINT SHOULDER TO TOP OF DESIGN	● ●
[3]	RIGHT FRONT MIDDLE - 1 1/2" BELOW NAME DROP TO TOP OF DESIGN	● ●
[4]	LEFT FRONT MIDDLE - 1 1/2" BELOW NAME DROP TO TOP OF DESIGN	● ●
[5]	RIGHT LOWER FRONT - 1" FROM NATURAL SIDE SEAM, 1" UP FROM HEM TO BOTTOM OF DESIGN	● ●
[6]	LEFT LOWER FRONT - 1" FROM NATURAL SIDE SEAM, 1" UP FROM HEM TO BOTTOM OF DESIGN	● ●
[7]	VERTICAL RIGHT LONG SLEEVE - 1' ABOVE HOLLOWAY "H" TO BOTTOM OF DESIGN	●
[8]	VERTICAL LEFT LONG SLEEVE - 2" ABOVE HEM TO BOTTOM OF DESIGN	●
[9]	VERTICAL RIGHT CHEST - CENTERED 6" DOWN FROM HIGH POINT SHOULDER TO TOP OF DESIGN	● ●
[10]	VERTICAL LEFT CHEST - CENTERED 6" DOWN FROM HIGH POINT SHOULDER TO TOP OF DESIGN	● ●
[11]	FULL BACK - 4" DOWN FROM COLLAR SEAM / 6" DOWN FROM COLLAR SEAM WITH HOOD TO TOP OF DESIGN (HOOD WONT COVER DESIGN)	● ●
[12]	TOP BACK NECK CENTER - 3" DOWN FROM NECK SEAM OR 1/2" BELOW HANG TAG TO TOP OF DESIGN	● ●
[14]	RIGHT SHOULDER - CENTERED ON RIGHT CHEST, 3" DOWN FROM SHOULDER SEAM TO TOP OF DESIGN	● ●
[15]	LEFT SHOULDER - CENTERED ON RIGHT CHEST, 3" DOWN FROM SHOULDER SEAM TO TOP OF DESIGN	● ●
[17]	FULL FRONT - 3" DOWN FROM CREW NECK SEAM, 1" DOWN FROM V-NECK SEAM, 1" DOWN FROM 2 BUTTON PLACKET SEAM TO TOP OF DESIGN	● ●
[20]	RIGHT UPPER LEG FRONT - 1" OVER FROM SIDE SEAM & CENTER DESIGN WITH TOP OF INSEAM (1" AWAY FROM "H" LOGO)	● ●
[21]	LEFT UPPER LEG FRONT - 1" OVER FROM SIDE SEAM & CENTER WITH TOP OF INSEAM	● ●
[22]	RIGHT LOWER LEG FRONT SHORT - 1" UP FROM BOTTOM OF HEM TO BOTTOM OF DESIGN & 1" OVER FROM NATURAL SIDE SEAM TO EDGE OF DESIGN	● ●
[23]	LEFT LOWER LEG FRONT SHORT - 1" UP FROM BOTTOM OF HEM TO BOTTOM OF DESIGN & 1" OVER FROM NATURAL SIDE SEAM TO EDGE OF DESIGN	● ●
[30]	LEFT SIDE PANEL SHORT - CENTERED ON NATURAL SIDE SEAM 1 1/2" UP FROM BOTTOM OF HEM TO BOTTOM OF DESIGN	● ●
[31]	RIGHT SIDE PANEL SHORT - CENTERED ON NATURAL SIDE SEAM 1 1/2" UP FROM BOTTOM OF HEM TO BOTTOM OF DESIGN	● ●
[32]	LEFT & RIGHT SIDE PANEL SHORT - CENTERED ON NATURAL SIDE SEAM 1 1/2" UP FROM BOTTOM OF HEM TO BOTTOM OF DESIGN	● ●
[43]	LOWER RIGHT SHORT SLEEVE - 1' ABOVE "H" LOGO TO BOTTOM OF DESIGN CENTERED WITH "H" LOGO	● ●
[44]	LOWER LEFT SHORT SLEEVE - 2" ABOVE BOTTOM OF SLEEVE TO BOTTOM OF DESIGN	● ●
[55]	LEFT HIP - 1' DOWN FROM BOTTOM OF WAIST SEAM TO TOP OF DESIGN & 1" OVER FROM NATURAL SIDE SEAM TO EDGE OF DESIGN	● ●
[61]	CENTER FRONT NECK - 3" DOWN FROM CREW NECK OR 1 1/2" DOWN FROM V-NECK TO TOP OF DESIGN	● ●
[73]	LEFT SIDE PANEL SHORT - CENTERED ON NATURAL SIDE SEAM 1 1/2" UP FROM BOTTOM OF HEM TO BOTTOM OF DESIGN	● ●
[74]	RIGHT SIDE PANEL SHORT - CENTERED ON NATURAL SIDE SEAM 1 1/2" UP FROM BOTTOM OF HEM TO BOTTOM OF DESIGN	● ●
[75]	LEFT & RIGHT SIDE PANEL SHORT - CENTERED ON NATURAL SIDE SEAM 1 1/2" UP FROM BOTTOM OF HEM TO BOTTOM OF DESIGN	● ●
[N1]	FRONT NUMBER - CENTERED 2" DOWN FROM THE NECK SEAM TO TOP OF NUMBER OR 1 1/2" DOWN FROM DESIGN	● ●
[N2]	BACK NUMBER - 7" DOWN FROM BOTTOM OF NECK SEAM TO TOP OF NUMBER (ADULT) 6" DOWN (YOUTH) 1" BELOW PLAYER NAME	● ●

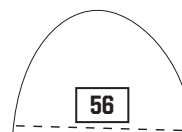
## BAGS & ACCESSORIES

(18)	DUFFLE BAG SIDE PANEL
(19)	DUFFLE BAG FRONT PANEL
(39)	BEANIE FRONT
(40)	RIGHT SCARF
(42)	LEFT SCARF
(45)	BACK PACK UPPER ZIPPER
(46)	BACK PACK LOWER ZIPPER
(47)	HEAD BAND FRONT
(48)	HEAD BAND BACK
(49)	CINCH BAG
(50)	STADIUM BLANKET VERTICAL
(69)	LEFT STADIUM BLANKET CORNER
(52)	STADIUM BLANKET CORNER
(69V)	LEFT STADIUM BLANKET CORNER
(52V)	STADIUM BLANKET CORNER
(62)	RIGHT SIDE BEANIE
(63)	LEFT SIDE BEANIE
(66)	CINCH BAG BACK
(67)	DUFFLE BAG TOP
(68)	STADIUM BLANKET VERTICAL END
(70)	LEFT SCARF CORNER
(56)	BEANIE BACK
(51)	STADIUM BLANKET HORIZONTAL
(71)	STADIUM BLANKET LEFT VERT. END
(72)	STADIUM BLANKET RIGHT VERT. END

### • BEANIE FRONT



### • BEANIE BACK



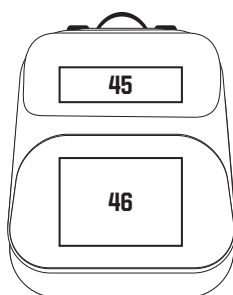
### • HEAD BAND FRONT



### • HEAD BAND BACK



### • BACK PACK



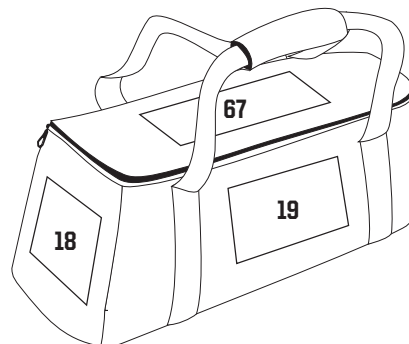
### • CINCH BAG FRONT



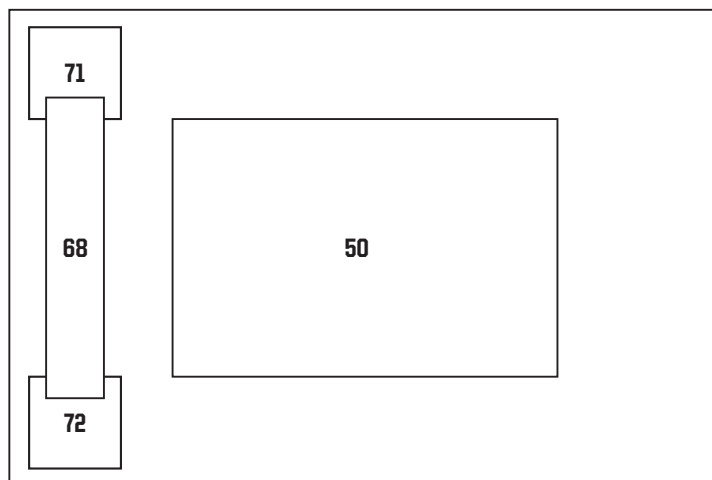
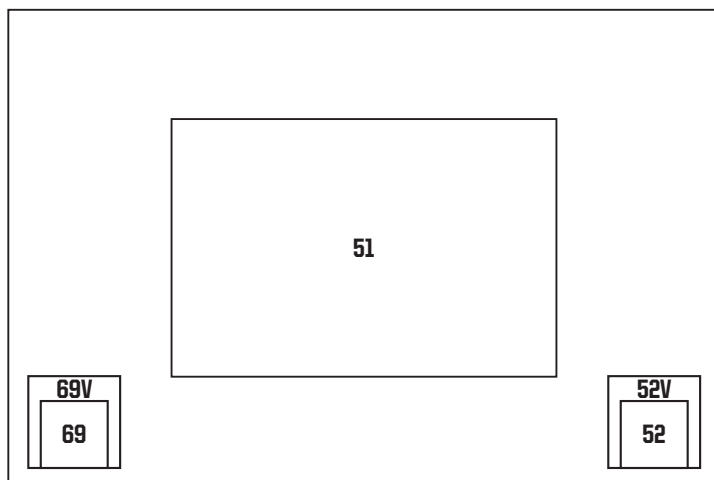
### • CINCH BAG BACK



### • DUFFLE BAG



### • BLANKET



### • SCARF



## BAGS & ACCESSORIES

## DECORATION LEGEND // ● SP - SCREEN PRINT ● EMB - EMBROIDERY

[18]	DUFFLE BAG SIDE PANEL - CENTER DESIGN TO PANEL TOP TO BOTTOM & LEFT TO RIGHT	● ●
[19]	DUFFLE FRONT PANEL- CENTER DESIGN TO PANEL TOP TO BOTTOM & LEFT TO RIGHT	● ●
[39]	BEANIE FRONT - 1 1/2" FROM BEANIE OPENING TO BOTTOM OF DESIGN OR CENTERED BETWEEN TOP & BOTTOM STRIPES (223832)	●
[40]	RIGHT SCARF - 2" FROM SCARF END TO EDGE OF DESIGN	● ●
[42]	LEFT SCARF - 2" FROM SCARF END TO EDGE OF DESIGN	● ●
[45]	BACK PACK UPPER ZIPPER - CENTER DESIGN LEFT TO RIGHT & TOP TO BOTTOM ON UPPER FLAP	● ●
[46]	BACK PACK LOWER ZIPPER - CENTER DESIGN LEFT TO RIGHT & TOP TO BOTTOM ON LOWER POCKET	● ●
[47]	HEAD BAND FRONT - CENTER DESIGN BETWEEN TOP & BOTTOM SEAMS	●
[48]	HEAD BAND BACK - CENTER DESIGN TOP TO BOTTOM & LEFT TO RIGHT IN DECORATION BLOCK	●
[49]	CINCH BAG - 3" FROM BAG OPENING SEAM TO TOP OF DESIGN, CENTERED LEFT TO RIGHT	● ●
[50]	STADIUM BLANKET VERTICAL - CENTER DESIGN TOP TO BOTTOM & LEFT TO RIGHT	● ●
[69]	LEFT STADIUM BLANKET CORNER - CENTER DESIGN DIAGONALLY 6" FROM CORNER OR 1" FROM EDGE OF DESIGN TO BLANKET EDGE	● ●
[52]	STADIUM BLANKET CORNER - CENTER DESIGN DIAGONALLY 6" FROM CORNER	● ●
[69V]	LEFT STADIUM BLANKET CORNER - CENTER DESIGN 6" FROM CORNER	● ●
[52V]	STADIUM BLANKET CORNER - CENTER DESIGN 6" FROM CORNER	● ●
[62]	RIGHT SIDE BEANIE - 1 1/2" FROM BEANIE OPENING TO BOTTOM OF DESIGN OR CENTERED BETWEEN TOP & BOTTOM STRIPES	●
[63]	LEFT SIDE BEANIE - 1 1/2" FROM BEANIE OPENING TO BOTTOM OF DESIGN OR CENTERED BETWEEN TOP & BOTTOM STRIPES	●
[66]	CINCH BAG BACK - CENTER DESIGN TOP TO BOTTOM & LEFT TO RIGHT	● ●
[67]	DUFFLE BAG TOP - CENTER DESIGN TOP TO BOTTOM & LEFT TO RIGHT	● ●
[68]	STADIUM BLANKET VERTICAL END - CENTER LEFT TO RIGHT 2" FROM BLANKET EDGE TO EDGE OF DESIGN	● ●
[70]	LEFT SCARF CORNER - 2" FROM SCARF END TO EDGE OF DESIGN	● ●
[56]	BEANIE BACK - 1 1/2" FROM BEANIE OPENING TO BOTTOM OF DESIGN OR CENTERED BETWEEN TOP & BOTTOM STRIPES	●
[51]	STADIUM BLANKET HORIZONTAL - CENTER DESIGN TOP TO BOTTOM & LEFT TO RIGHT	● ●
[71]	STADIUM BLANKET LEFT VERT. END - CENTER DESIGN 6" FROM CORNER	● ●
[72]	STADIUM BLANKET RIGHT VERT. END - CENTER DESIGN 6" FROM CORNER	● ●