

General Installation

1. Line up one of the green edges of the tape with the flooring edge and press lightly as you roll out the tape.
2. Press the center of the green area of the tape lightly into expansion space to form a shallow valley. This will allow for flooring movement.
3. Press the upper, clear adhesive portion of the tape against the wall. Be sure to press tape fully into corners. (See full instructions for details on corners and transitions.)
4. Use your fingers or a rigid card to press out air bubbles and firmly bond tape to flooring and wall surfaces. Use a card to firmly press the tape into any beveled joints.
5. Create flaps at corners as shown. (See "Corner Installation Instructions" and "Transitional Molding Installation Instructions" for details on corners, seams and transitions.)
6. Install quarter round or baseboard per instructions. Properly set nails into wall, not into the subfloor (do not shoot nails through green portion of tape).



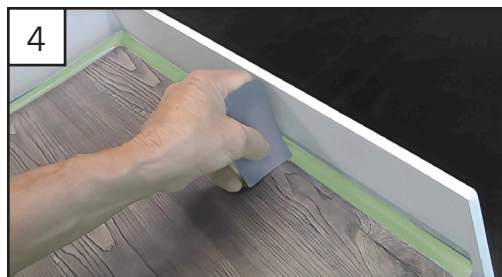
Line up one of the green edges of the tape with the flooring edge and press lightly as you roll out the tape.



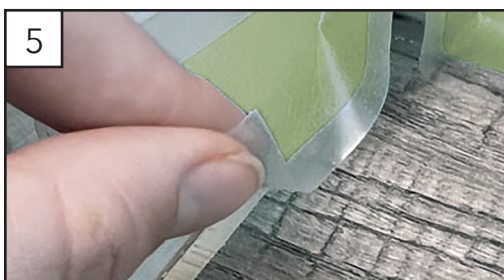
Press the center of the green area of the tape lightly into expansion space to form a shallow valley.



Press the upper, clear adhesive portion of the tape against the wall. Be sure to press tape fully into corners.



Use your fingers or a rigid card to press out air bubbles and firmly bond tape to flooring and wall surfaces. Use a card to firmly press the tape into any beveled joints.



Create flaps at corners as shown.

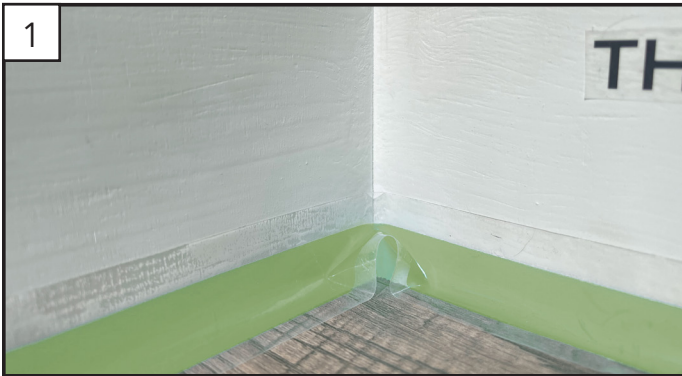


Install quarter round or baseboard per instructions. Properly set nails into wall, not into the subfloor.



Corner Installation

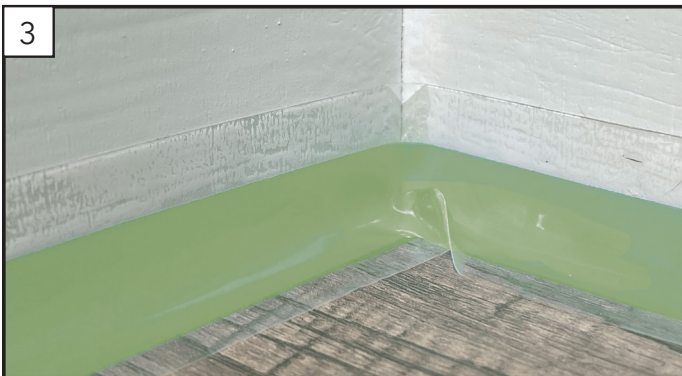
1. At the corner, press the top section of the tape firmly into corner and create an arch with the bottom portion of the tape. The top of the tape must be pressed completely into the corner. Make sure the tape is properly aligned with the flooring edge before continuing.
2. After applying PerimeterSeal to the rest of the flooring edge, run a finger along the bottom of tape towards arch, folding it down.
3. If the corner is properly folded, a flap, as pictured below, will form. Press firmly along the clear side of the flap to seal sides together.
4. Repeat step 2 on opposing side. Make sure to firmly adhere tape to the edge of the flooring as shown.



At the corner, press the top section of the tape firmly into corner and create an arch with the bottom portion of the tape. The top of the tape must be pressed completely into the corner. Make sure the tape is properly aligned with the flooring edge before continuing.



After applying PerimeterSeal to the rest of the flooring edge, run a finger along the bottom of tape towards arch, folding it down.



If the corner is properly folded, a flap, as pictured above, will form. Press firmly along the clear side of the flap to seal sides together.



Repeat step 2 on opposing side. Make sure to firmly adhere tape to the edge of the flooring as shown.

Transition Installation Instructions

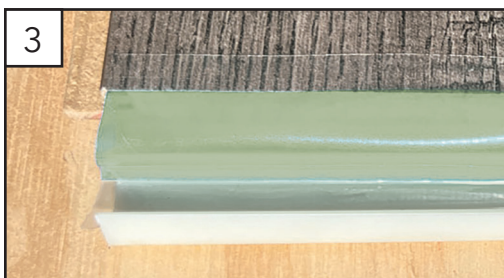
1. Apply one side of the tape to the flooring as described in the main instructions. Make sure the second side of the tape remains free while applying. Press tape firmly onto the flooring to seal.
2. Lay the other side of the tape over the vertical surface of the nearest side of the transition track. Press the tape into the track without adhering it yet.
3. The tape should lay over the expansion space as shown. Continue down the rest of the length following steps 1 & 2.
4. Once tape is applied to the entire length of the transition, use a finger to lightly press the arch of the tape in between the two surfaces into a shallow valley.
5. Install the transition piece as specified by the manufacturer. Repeat steps 1-4 to the opposite side of the track if using T-molding before placing the transition into the track.



Apply one side of the tape to the flooring as described in the main instructions. Make sure the second side of the tape remains free while applying. Press tape firmly onto the flooring to seal.



Lay the other side of the tape over the vertical surface of the nearest side of the transition track. Press the tape into the track without adhering it yet.



The tape should lay over the expansion space as shown. Continue down the rest of the length following steps 1 & 2.



Once tape is applied to the entire length of the transition, use a finger to lightly press the arch of the tape in between the two surfaces into a shallow valley.



Install the transition piece as specified by the manufacturer. Repeat steps 1-4 to the opposite side of the track if using T-molding before placing the transition into the track.