

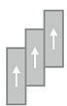
Transfiguration 4.5 \$

Overview

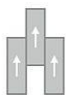
Feature	Description
Collection	Taking Root
Style	Transfiguration 4.5 (C2088)
Product Type	LVT
Size	18" X 36"
Construction	Commercial LVT
Gauge	4.5 mm
Total Thickness	4.5 mm
Wear Layer	20 mil (0.5 mm)
Finish	M-Force™ Ultra
Surface Profile	Embossed
Edge Profile	Micro-Beveled
Installation	Glue Down
Installation Method	Brick Ashlar, Half Lap, Herringbone, Random
Recommended Adhesive	M95.0, M99, MS160, M700 Plus, or Total Bond Adhesive



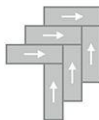
Recommended Installation Methods



Brick Ashlar



Half Lap



Herringbone



Random

Colorways



Shift

Color code: 929
Style number: C2088



Variation

Color code: 859
Style number: C2088

Testing

Feature	Description
Classification	(ASTM F1700) Class III, Type B, Embossed
Squareness	(ASTM F2421) ± 0.10 in
Size and Tolerance	(ASTM F2421) ± 0.016 in
Thickness	(ASTM F386) $\pm .005$ in
Flexibility	(ASTM F137) Passes
Dimensional Stability	(ASTM F2199) Passes
Static Load Limit	(ASTM F970) 1000 psi
Residual Indentation	(ASTM F1914) Passes
Resistance to Chemicals	(ASTM F925) Passes
Resistance to Light	(ASTM F1515) Passes
Resistance to Heat	(ASTM F1514) Passes
Radiant Flux	(ASTM E648) Class 1
Smoke Density	(ASTM E662) ≤ 450
Wear Layer Thickness	20 mil (0.5 mm)
Lightfastness	(ASTM F1515) Passes

Sustainability

Feature	Description
Embodied Carbon	6.65 kg CO ₂ e/sq m ²
Carbon Handprint	-6.98 kg CO ₂ e/sq m ²
Beyond Carbon Neutral	-0.333
Pre-Consumer Recycled Content	100%
EPD	Flex 4.5 LVT EPD
Material Health	Free of Orthophthalates and Heavy Metals
Specify for a Cure	Eligible
Mindful Materials	Participates
MindClick Rating	Achiever
Country of Origin	USA

Packaging

Feature	Description
Pieces per Carton	7
Weight per Piece	7.29
Cartons Per Pallet	30
Square Feet per Carton	31.5
Weight per Carton	51.03

Warranties

Limited 20 Year M-Force Ultra Commercial Warranty