



EcoFlex™ Echo / Metallic Clay

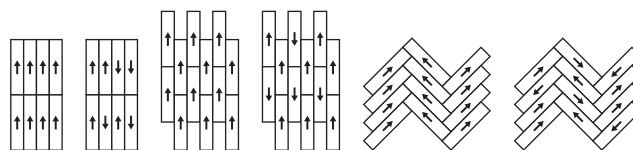
Carpet Tiles

Technical Specifications

Spécifications techniques - Technische specificaties - Technische Spezifikationen

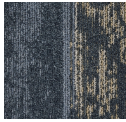
Construction Structure - Structuur - Konstruktion		Tufted 1/12" gauge loop
Pile fibre composition Composition des fibres - Poolmateriaal - Material der Polnutschicht		100% solution dyed nylon
Secondary backing Envers - Rug - Beschichtung		EcoFlex™ Echo (94% Recycled Felt)
Total weight Poids total - Totaal gewicht - Gesamtgewicht		± 4700 g/m ²
Pile weight Poids du velours - Poolgewicht - Poleinsatzgewicht		± 600 g/m ²
Surface pile weight Poids du velours utile - Effectieve poolmassa - Polnutschichtgewicht		± 384 g/m ²
Total thickness Epaisseur totale - Totale dikte - Gesamtdicke		± 9,2 mm
Surface pile thickness Hauteur du velours - Poolhoogte - Poldicke		± 3,4 mm
Surface pile density Densité du velours - Pooldichtheid - Polrohdichte		± 0,115 g/cm ³
Number of tufts Nombre de boucles - Aantal noppen - Noppenzahl		205.000/m ²
Wear classification Classement d'usage - Gebruiksklasse - Beanspruchungsklasse	EN 1307	33 / LC1
Castor chair suitability Résistance aux chaises à roulettes - Rolstoelgeschiktheid - Stuhlrolleneignung	EN 985	A: intensive use
Fire classification Comportement au feu - Brandgedrag - Brandklasse	EN 13501-1	Bfl-s1
Dimensional stability Stabilité dimensionnelle - Dimensionele stabiliteit - Dimensionsstabilität	EN 986	≤ 0,2%
Colour fastness to light Solidité des couleurs à la lumière - Lichtbestendigheid van de kleuren - Lichtechtheit	EN ISO 105-B02	≥ 7
Rubbing fastness Solidité au frottement - Wrijftechtheid - Reibechtheit	EN ISO 105-X12	≥ 4
Colour fastness to water Solidité à l'eau - Waterechtheid - Wasserechtheit	EN ISO 105-E01	≥ 4
Thermal resistance Résistance thermique - Warmtedoorlaatweerstand - Wärmedurchlasswiderstand	ISO 8302	0,127 m ² .KW
Sound absorption Absorption phonique - Geluidsabsorptie - Schallabsorptionsgrad	EN ISO 354	0,25 a _w Hz 125 250 500 1000 2000 4000 a _s 0,00 0,03 0,28 0,23 0,30 0,46
Impact sound reduction Réduction phonique aux bruits d'impacts - Reductie contactgeluid - Trittschallverbesserungsmaß	EN ISO 10140-3	ΔL _w = 31 dB
Permanent antistatic Antistatique permanent - Permanent antistatisch - Permanent antistatisch	ISO 6356	≤ 2 kV
Number of colours Nombre de coloris - Aantal kleuren - Anzahl der Farben		9
Size & Packaging Dimensions & Emballage - Formaat en verpakking - Abmessungen & Verpackung		25 x 100 cm 4 m ² /box - 24 boxes/pallet
GUT-Prodís Number Numéro GUT Prodís - Nummer GUT Prodís - GUT-Prodís Nummer		9ADE6ED5

We reserve all rights for technical improvements. 09/2020



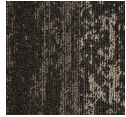


Colorways



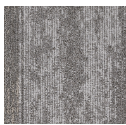
Metallic Clay 559

Colour code: 559
Colour: Blueteal



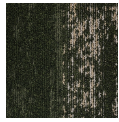
Metallic Clay 845

Colour code: 845
Colour: Brown



Metallic Clay 964

Colour code: 964
Colour: Taupe



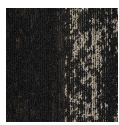
Metallic Clay 648

Colour code: 648
Colour: Green



Metallic Clay 919

Colour code: 919
Colour: Grey



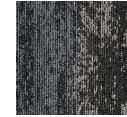
Metallic Clay 984

Colour code: 984
Colour: Black, Brown



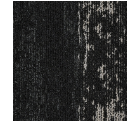
Metallic Clay 778

Colour code: 778
Colour: Beige



Metallic Clay 947

Colour code: 947
Colour: Grey



Metallic Clay 985

Colour code: 985
Colour: Grey, Black