



# Ecoflex™ Echo / Liberate

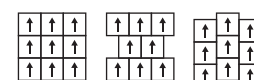
## Carpet Tiles

### Technical Specifications

Spécifications techniques - Technische specificaties - Technische Spezifikationen

<b>Construction</b> Structure - Structuur - Konstruktion		Tufted 1/12" gauge loop
<b>Pile fibre composition</b> Composition des fibres - Poolmateriaal - Material der Polnutzschicht		100% SDN Thrive® Matter (90% recycled content)
<b>Secondary backing</b> Envers - Rug - Beschichtung		Ecoflex™ Echo (94% recycled PES Felt)
<b>Total weight</b> Poids total - Totaal gewicht - Gesamtgewicht		+/- 4750 g/m <sup>2</sup>
<b>Pile weight</b> Poids du velours - Poolgewicht - Poleinsatzgewicht		+/- 700 g/m <sup>2</sup>
<b>Surface pile weight</b> Poids du velours utile - Effectieve poolmassa - Polnutzschichtgewicht		+/- 489 g/m <sup>2</sup>
<b>Total thickness</b> Epaisseur totale - Totale dikte - Gesamtdicke		+/- 9,1 mm
<b>Surface pile thickness</b> Hauteur du velours - Poolhoogte - Poldicke		+/- 3,6 mm
<b>Surface pile density</b> Densité du velours - Pooldichtheid - Polrohdichte		+/- 0,136 g/cm <sup>3</sup>
<b>Number of tufts</b> Nombre de boucles - Aantal noppen - Noppenzahl		234.600/m <sup>2</sup>
<b>Wear classification</b> Classement d'usage - Gebruiksklasse - Beanspruchungsklasse	EN 1307	33 / LC2
<b>Castor chair suitability</b> Résistance aux chaises à roulettes - Rolstoelgeschiktheid - Stuhlrolleneignung	EN 985	A: intensive use
<b>Fire classification</b> Comportement au feu - Brandgedrag - Brandklasse	EN 13501-1	Bfl-s1
<b>Dimensional stability</b> Stabilité dimensionnelle - Dimensionele stabiliteit - Dimensionsstabilität	EN 986	≤ 0,2%
<b>Colour fastness to light</b> Solidité des couleurs à la lumière - Lichtbestendigheid van de kleuren - Lichtechtheit	EN ISO 105-B02	≥ 7
<b>Rubbing fastness</b> Solidité au frottement - Wrijftechtheid - Reibechtheit	EN ISO 105-X12	≥ 4
<b>Colour fastness to water</b> Solidité à l'eau - Waterechtheid - Wasserechtheit	EN ISO 105-E01	≥ 4
<b>Thermal resistance</b> Résistance thermique - Warmtedoorlaatweerstand - Wärmedurchlasswiderstand	ISO 8302	0,128 m <sup>2</sup> .KW
<b>Sound absorption</b> Absorption phonique - Geluidsabsorptie - Schallabsorptionsgrad	EN ISO 354	0,30 aw Hz 125 250 500 1000 2000 4000 as 0,00 0,03 0,32 0,23 0,33 0,50
<b>Impact sound reduction</b> Réduction phonique aux bruits d'impacts - Reductie contactgeluid - Trittschallverbesserungsmaß	EN ISO 10140-3	ΔLw = 29 dB
<b>Permanent antistatic</b> Antistatique permanent - Permanent antistatisch - Permanent antistatisch	ISO 6356	≤ 2 kV
<b>Number of colours</b> Nombre de coloris - Aantal kleuren - Anzahl der Farben		18
<b>Size &amp; Packaging</b> Dimensions & Emballage - Formaat en verpakking - Abmessungen & Verpackung		50 x 50 cm 4,5 m <sup>2</sup> /box - 24 boxes/pallet
<b>GUT-Prodis Number</b> Numéro GUT Prodis - Nummer GUT Prodis - GUT-Prodis Nummer		Ongoing

We reserve all rights for technical improvements. 08/2022





### Colorways



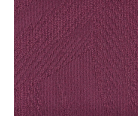
#### Liberate 140

Colour code: 140  
Colour: Yellow



#### Liberate 232

Colour code: 232  
Colour: Orange rust



#### Liberate 467

Colour code: 467  
Colour: Purple



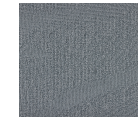
#### Liberate 474

Colour code: 474  
Colour: Purple



#### Liberate 543

Colour code: 543  
Colour: Blueteal



#### Liberate 545

Colour code: 545  
Colour: Blueteal



#### Liberate 559

Colour code: 559  
Colour: Blueteal



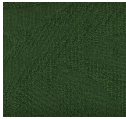
#### Liberate 569

Colour code: 569  
Colour: Blueteal



#### Liberate 574

Colour code: 574  
Colour: Purple, Blueteal



#### Liberate 621

Colour code: 621  
Colour: Green



#### Liberate 699

Colour code: 699  
Colour: Green



#### Liberate 731

Colour code: 731  
Colour: Beige



#### Liberate 848

Colour code: 848  
Colour: Brown



#### Liberate 904

Colour code: 9004  
Colour: Grey, Beige



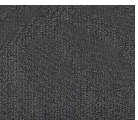
#### Liberate 911

Colour code: 911  
Colour: Grey



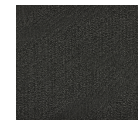
#### Liberate 969

Colour code: 969  
Colour: Grey



#### Liberate 979

Colour code: 979  
Colour: Grey



#### Liberate 989

Colour code: 989  
Colour: Grey, Black