

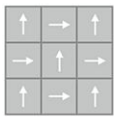
Carpet Tile C

Overview

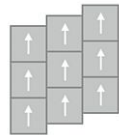


Feature	Description
Collection	Art Exposure
Style	Adaptable (BT432)
Product Type	Carpet Tile
Size	24" X 24"
Construction	Tufted
Surface Appearance	Textured Patterned Multi-Colored Loop
Fiber	ColorStrand® Nylon
Dye Method	Solution Dyed
Stain Release Technology	EcoSentry Plus Stain Protection
Soil Release Technology	EcoSentry Soil Protection
Backing	EcoFlex Matrix
Pile Weight	17.00 oz/yd2 (576 g/m2)
Gauge	1/12 (47.00 rows per 10 cm)
Stitches per Inch	12 (47.24 per 10cm)
Pile Thickness	.099" (2.51 mm)
Total Thickness	0.210" (5.33 mm)
Density	6181
Installation	FlexLok
Installation Method	Quarter Turn, Vertical Ashlar, Brick Ashlar, Monolithic, Multi-Directional
Recommended Adhesive	Enpress, M700 Plus, FlexLok+ Tabs, Total Bond

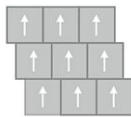
Recommended Installation Methods



Quarter Turn



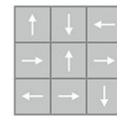
Vertical Ashlar



Brick Ashlar



Monolithic



Multi-Directional

Colorways



Ecrú

Color code: 958
Style number: BT432

Testing

Feature	Description
TARR Rating	Heavy
Flammability	(ASTM E648) Class 1 - Glue Down
Static Propensity	(AATC 134) Under 3.5 KV
Smoke Density	(ASTM E662) Less than 450

Sustainability

Feature	Description
Embodied Carbon	7.45 kg CO ₂ e/sq m ²
Carbon Handprint	-7.82 kg CO ₂ e/sq m ²
Beyond Carbon Neutral	-0.37
Total Recycled Content	45%
Pre-Consumer Recycled Content	45%
EPD	EcoFlex Matrix EPD
HPD	EcoFlex Matrix HPD
Material Health	Declare Red List Free
NSF 140	EcoFlex Matrix - NSF 140 Gold
LEED	Calculate LEED on Ecomedes
Indoor Air Quality	GLP 1171
Mindful Materials	Participates
MindClick Rating	Achiever
End of Life	ReCover
Country Of Origin	USA

Packaging

Feature	Description
Square Yards Per Carton	10.67
Cartons Per Pallet	22
Weight Per Carton	38.64

Warranties

Lifetime Limited Carpet Tile Warranty, Lifetime Limited Colorfastness to Light, 10 Year Limited Colorfastness to Atmospheric Contaminants, 10 Year Limited Stain Warranty, Lifetime Static