



Healthy Environments

Medella Fleck Medella Hues



Healthy Environments

The #1 Specified Healthcare Flooring Solution

With Healthy Environments, we draw on our innate connection to the natural world in order to create spaces for healing. The collection is designed to comfort patients and their families with a soothing sense of natural forms and textures, while delivering the high performance and ease of cleaning that healthcare spaces require.

In homogeneous resilient sheet, Medella Fleck and Medella Hues bring contemporary terrazzo visuals to the most demanding healing environments. Medella Fleck features soft colors and a rich visual texture that infuses the indoors with nature's beauty. Medella Hues puts color front and center, providing a wide variety of neutrals and brights for expanded design possibilities.

Learn more at [mohawkgroup.com](https://www.mohawkgroup.com)







Medella Fleck & Medella Hues

Healthy Environments homogeneous resilient sheet with M-Force™ Ultra installs with welded seams, creating a wall-to-wall impermeable flooring solution that supports healing spaces with superior infection control and moisture resistance. The broad palette can create nurturing environments and also offers pops of color that are ideal for way-finding or pediatric spaces.

M-Force™ Ultra

PERFORMANCE FOR LIFE

Medella Fleck and Medella Hues feature M-Force™ Ultra technology providing exceptional abrasion, scratch, stain and dent resistance, and easy maintenance for lasting beauty.



SUSTAINABLE

Medella Fleck and Medella Hues feature an ASTM certified EPD, use a non-ortho phthalate construction and have Floorscore certification for better indoor air quality.



BETTER TOGETHER

As part of our Specify for the Cure program, Mohawk Group will donate on your behalf to Susan G. Komen for qualifying specifications of this collection.



BEYOND CARBON NEUTRAL

This collection is Beyond Carbon Neutral, for a Net-Positive impact.





Medella Hues H5311 Natural White



Medella Hues COLORWAYS



H5300 Cool White



H5301 Gray Light



H5302 Deep Gray



H5303 Almost Black



H5304 Natural Gray Light



H5305 Natural Gray



H5306 Natural Gray Dark



H5307 Dusty Gray Light



H5308 Dust Gray Mid



H5310 Rock



H5311 Natural White



H5312 Natural



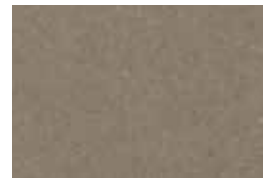
H5313 Natural Tone



H5316 Light Chocolate



H5319 Sand Light



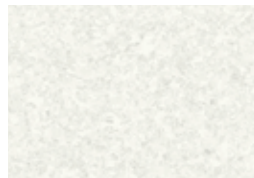
H5320 Sand Mid



H5328 Steel Light



H5329 Steel Mid



H5331 Birch



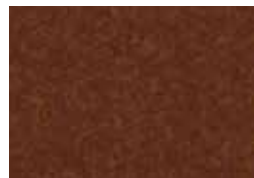
H5332 Salt Spray



H5333 Stream Blue



H5334 Scarlet



H5335 Feldspar



H5336 Night Sky

Medella Hues COLORWAYS



H5350 Indigo Mid



H5351 Indigo



H5358 Soft Green Light



H5362 Sage



H5403 Brown Umbra



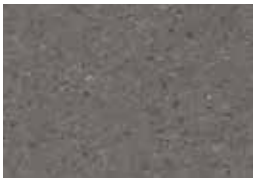
H5406 Ocean Blue



H5408 Lime



H5420 Little Black Book



H5421 Hazel



H5422 Walnut



H5423 Golden Sun



H5424 Zaffron



H5425 Tangerine



H5426 Fuchsia



H5427 Perfectly Plum



H5428 Hydrangea



H5431 Serenity



H5432 Regatta



H5433 Lagoon



H5434 Mazarine



H5435 Pine



H5436 Maize



H5438 Light Aubergine



H5532 Grayed





Medella Fleck 84850 Pearl; Medella Hues H5427 Perfectly Plum, H5425 Tangerine, H5408 Lime



Medella Fleck COLORWAYS



84163 Almond



84197 Silver Gray



84410 Color Fleck



84620 Chateau Gray



84760 Shell



84850 Pearl



84880 Sky



84970 Sandstone



84980 Snow



84982 Fog



84983 Stone Dust



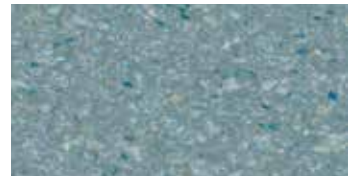
84985 Morning Haze



84986 Shore Sand



84987 Stone Wall



84988 Alpine Lake



84989 Starry Night

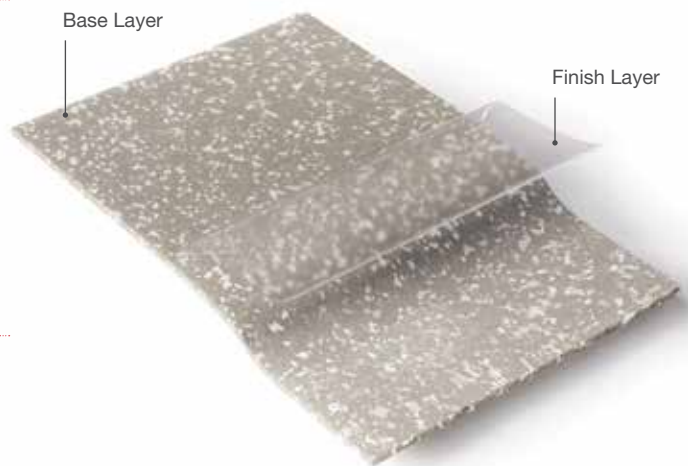


M-Force™ Ultra FOR SHEET

Discover a hard surface flooring solution that delivers superior durability and stain resistance, ensuring ease of care for the life of the floor. Mohawk Group's Resilient Sheet Flooring with M-Force™ Ultra provides elegant design and performance solutions for healthcare spaces.

PERFORMANCE

- M-Force™ Ultra provides exceptional abrasion, scratch, puncture and stain resistance for lasting beauty.
- Easy to clean and maintain, M-Force™ Ultra provides greater stain and soil protection.
- Homogeneous Resilient construction provides enhanced protection from cuts or gouges to the product.



WATER RESISTANCE

- With welded seams and a water-repellent finish, Healthy Environments resilient styles create impermeable flooring systems.

Installation

Medella Fleck and Medella Hues are designed to work across a variety of project applications and segments. Check out our recommended application guide by scanning the QR code.

IN-HOUSE CUT PROGRAM

- Medella Fleck and Medella Hues can be cut to fit your needs with our in-house cut program
- No order minimums required

PROJECT SOLUTIONS

- MS160 spray adhesive can be used for projects where immediate occupancy is needed
- Medella Fleck and Medella Hues can be flash coved for enhanced sanitary protection.

COMPREHENSIVE WARRANTIES

- Limited 10 Year Commercial Warranty
- Limited 10 Year Commercial Under Bed Warranty*



*When installed with approved adhesives. Visit Mohawkgroup.com for more information

**Beyond
Carbon
Neutral**



Since 2022

All Mohawk Group products are carbon neutral

PLUS an additional 5% for a net-positive impact on the climate

2040

Net zero carbon emissions

We've signed The Climate Pledge to be net zero in emissions by 2040 and have already started major changes to reduce our carbon footprint.

Neutral is not enough.

With our holistic improvement of the life cycle of our flooring products— from full product transparency, to reduced water usage in manufacturing, to carbon neutrality and beyond—better is just the beginning.

**THE
CLIMATE
PLEDGE**



Better for our world means doing more to stop and reverse climate change.

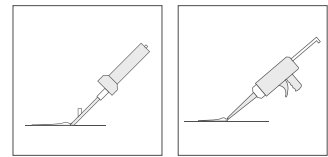


Resilient Sheet Weld Rods

Mohawk Group's solid or patterned heat weld rods are recommended for Medella Fleck and Medella Hues. The weld rods are used for seaming, wayfinding or accenting commercial resilient sheet. For suggested color coordinates with Healthy Environments, view the recommended weld rod chart online. Final weld rod color selection is determined by specifier or end-user based on the flooring design.

HEAT WELD / COLD WELD

Optional heat welding or cold welding techniques can be used to create seamless, sanitary flooring that's easy to maintain. Place orders for weld rods using skus shown below for the style number, followed by the coordinating Medella Fleck or Medella Hues color number. Place order using "INFZC" for the Infuze Seam Sealer.



Heat Weld Skus Below INFZC Cold Weld

Resilient Sheet Solid Weld Rods (164 LF per roll)

- Medella Fleck Solid MFSWR
- Medella Hues Solid MHSWR

Resilient Sheet Patterned Weld Rods (82 LF per roll)

- Medella Fleck Patterned MFPWR
- Medella Hues Patterned MHPWR



Specifications

Medella Fleck (C2061)
Medella Hues (C2062)

DESIGN

Width	6' 7" (2.0 m)
Overall Thickness	0.080" (2.0 mm)
Finish	M-Force™ Ultra
Colors Available	
Medella Fleck	16
Medella Hues	48
Seaming Method	Mohawk Solid and Patterned Heat Weld Rod or Cold Weld
Packaging	Roll Length - Up to 98.4' (30 m)

For detailed adhesive and installation information visit mohawkgroup.com

PERFORMANCE

Construction	Commercial Grade Homogeneous Resilient Sheet Non-ortho Phthalate Construction
Classification	ASTM F1303 - Meets or Exceeds
Flexibility	ASTM F137 - Passes
Thickness	ASTM F386 - Passes, as specified ± .005"
Static Load Limit	ASTM F970 - Passes, 750 psi Modified
Residual Indentation	ASTM F1914 - Passes, Average less than 8%
Resistance to Chemicals	ASTM F925 - Passes
Resistance to Light	ASTM F1515 - Passes, $\Delta E \leq 8$
Resistance to Heat	ASTM F1514 - Passes, $\Delta E \leq 8$
Critical Radiant Flux	ASTM E648 - Meets, Class 1
Smoke Density	ASTM E662 - Meets, 450 or less

SUSTAINABILITY

Certification	Environmental Product Declaration
Indoor Air Quality	FloorScore® Certified
Carbon	Net-Positive Carbon (Neutral +5%)

SERVICE

Warranties	Limited 10 Year Commercial Limited 10 Year Under Hospital Bed Warranty*
------------	--

*When installed with approved adhesives. Visit Mohawkgroup.com for more information

Mohawk Group warrants its adhesives for the life of the original installation only when a Mohawk Group style (product) is installed. Mohawk's floor preparation procedures must be followed to ensure that the substrate has been prepared properly. The use of Mohawk Group approved adhesives is required to ensure optimum results and are the only adhesives warranted by Mohawk Group. Please contact your local Sales Representative for installation guidelines.

Mohawk Group is providing this architect folder for the purpose of promoting our commercial business. This folder and its samples shall remain the property of Mohawk Group. Color may vary from dye lot to dye lot. Substitution of material may be made due to improved technology, supply limitations or other factors. The performance of this product is not affected by such variations. **For current and complete specifications please visit mohawkgroup.com**



