



Faculty Renewal



# Faculty Renewal

Great design—like a great education or successful career—is built on a legacy of learning, continually taking the best insights from the past and renewing their purpose and value for today.

With Faculty Renewal, we build on the legacy of our Faculty carpet style, long-renowned for its performance and sustainability. We bring a new level of subtle beauty and design versatility with our Color Pulse™ fiber technology, a fusion of sophisticated color blends and Duracolor® Tricolor solution dyed nylon.

Available in both broadloom and carpet tile, Faculty Renewal features 14 new colorways to easily enhance all types of aesthetics—laying the groundwork for your next beautifully designed, worry-free space.



Learn more at [mohawkgroup.com](https://www.mohawkgroup.com)

Cover:  
Faculty Renewal, 868 Denali, 374 Mariposa Grove  
Chromascope, 120 Buff Ivory  
Custom Installation







$$2 \cdot 9a^2$$
$$2a^2$$
$$5 \cdot 2^2 \cdot 64 \cdot 2a^2$$
$$27 \cdot 6^2 \cdot 2a^2$$
$$27 \cdot 2a^2 = 27a^2$$
$$59 \cdot 4a^2 = 236a^2$$





Faculty Renewal combines our most advanced fiber technologies and backing systems to provide a solution that will endure in challenging, high-traffic spaces. With the option for broadloom or carpet tile in each colorway, you can choose the best format for the needs of your project without compromising on performance, aesthetics or sustainability attributes.

Faculty Renewal is also engineered for incredibly easy maintenance; in between cleanings, the carpet visually hides soil to help ensure an always-fresh appearance.



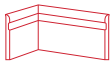
**NEXT GENERATION  
CARPET FIBER**

Duracolor Tricolor's new innovative modified-delta shape and optical core optimize color clarity, strength, stain resistance, and soil hiding and removal. As a result, Duracolor Tricolor delivers the ultimate synthesis of brilliant color and unsurpassed performance.

**EcoFlex™ ONE**

**CARPET TILE BACKING**

Harnessing proven technology and advanced materials, EcoFlex™ ONE delivers an all-in-one solution for optimal flooring performance and reduced costs, while supporting greater wellness for people and planet.



**Elemental Edges**

**WALL BASE**

Elemental Edges is a portfolio of wall bases for your finishing needs. Our architectural and cove wall bases are offered in 14 QuickShip colors that coordinate perfectly with our full suite of soft and hard surface products.

**Color Pulse™**

**MULTI-COLOR FIBER  
TECHNOLOGY**

Color Pulse provides the multi-color dimension of space dyed yarn, but with the lower environmental impact and high performance of solution dyed nylon. Its zero-water dyeing process helps reduce water impact by up to one cup of water per carpet tile compared to a space dyed product.

**Unibond® Plus**

**BROADLOOM BACKING**

Ideal for high-performance environments, Unibond Plus is an advanced broadloom backing system designed to provide long term carpet durability while delivering sustainability benefits.

**ADDITIONAL FEATURES**

- Lifetime Duracolor Stain Warranty
- LEED, WELL & LBC Eligible
- Declare Red List Free
- CRI Green Label Plus
- NSF 140 Platinum (Carpet Tile)
- NSF 140 Gold (Broadloom)





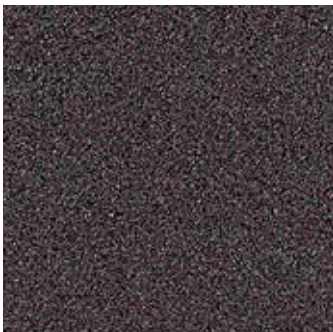


Faculty Renewal, 645 Emerald Pools  
Monolithic



## Colorways

In earth tones and neutrals, blues and greens, draw on the power of carefully blended colors to renew and refresh your spaces. The colorways of Faculty Renewal create a muted yet supportive backdrop for your designs, providing rich visual texture as well as easy coordination with your palette.



374 Mariposa Grove

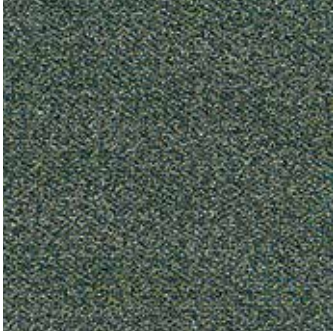


553 Lake Louise

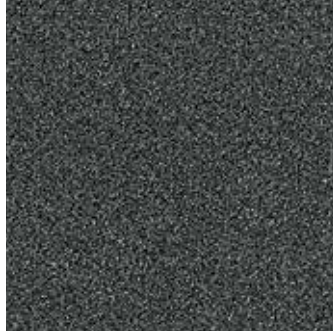


575 Crater Lake

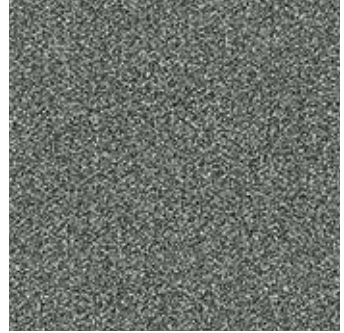




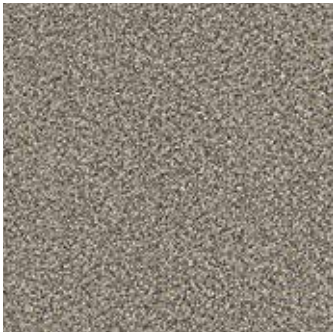
645 Emerald Pools



676 Fern Canyon



726 Exit Glacier



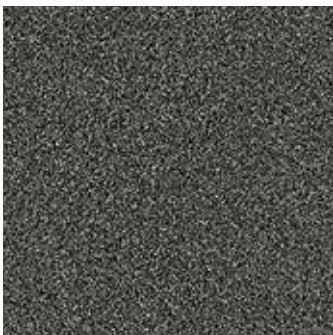
831 The Narrows



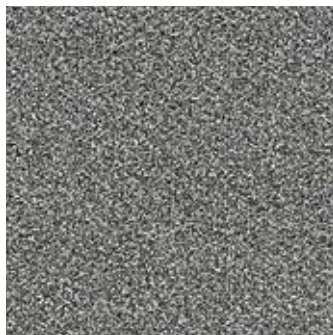
848 Angel's Landing



868 Denali



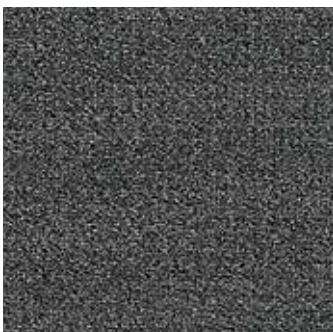
879 Mt. Marathon



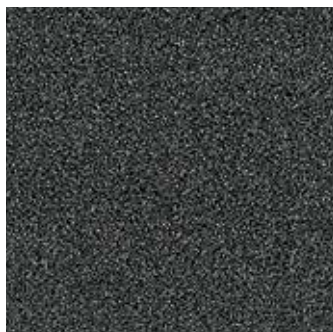
937 Harding Icefield



949 Half Dome



969 Skyline Trail



989 Black Ridge





Faculty Renewal, 726 Exit Glacier  
Monolithic



# Better for People and Planet

Our future depends on the work we do today. At Mohawk Group, commitment to our planet extends beyond just products and processes: it's how we challenge ourselves to do and be better every day, how we make decisions, how we reinvest in our people and our planet, and how we define what matters most as we work to deliver value for generations to come.



**better  
for  
people**

## Human Health

**Declare Red List Free  
Health Product Declaration  
Green Label Plus Certification**

Mohawk Group is proud to provide products free of Red List chemicals with verified documentation of their impact throughout the lifecycle, with Green Label Plus certification for better indoor air quality.



**better  
for the  
planet**

## Climate Health

**UL Certified EPD**



**Living Product Challenge Petal Certified**

Faculty Renewal carpet tile is net-positive for carbon and water and achieves Petal Certification from the International Living Future Institute by complying with multiple imperatives of all seven petals.



**Beyond Carbon Neutral**

Carbon neutral PLUS an additional 5% carbon offset for a net-positive impact on the environment.

**Net Zero Carbon Emissions by 2040**

We've signed The Climate Pledge to be net zero by 2040 and have already started major changes to reduce our carbon footprint.

## Circular Economy

**End of Life Options**

Salvageable/Reusable in its Entirety  
Take Back Program (ReCover)

## Ecosystem Health

**Neutral Is Not Enough**

With the holistic improvement of the lifecycle of our flooring products – from full product transparency, to reduced water usage in manufacturing, to carbon neutrality and beyond – better is just the beginning.

**Water Positive**

Mohawk Group balances all water on its Living Product Challenge Petal Certified carpet tiles by 105% for a net-positive impact on our waterways.





# Specifications BROADLOOM

## Faculty Renewal (GL368)

### DESIGN

---

Width	12' width (3.66 m)
Pattern Repeat	18" (W) x 48" (L)
Surface Appearance	Textured Multi-Colored Loop
Fiber Type	Duracolor® Tricor Premium Nylon
Dye Method	Solution Dyed
Colors Available	14

### PERFORMANCE

---

Construction	Tufted
Gauge	1/12" (47.00 rows per 10cm)
Tufted Weight	25 oz/yd <sup>2</sup>
Stain Release Technology	Permanent, Built into the Fiber
Soil Release Technology	EcoSentry Soil Protection
Backing Material	Unibond® Plus
Flammability	ASTM E 648 - Class 1 (Glue Down)
Smoke Density	ASTM E 662 - Less than 450
Static Propensity	AATCC - 134 Under 3.5 KV

### SUSTAINABILITY

---

Certification	Declare Red List Free
Indoor Air Quality	Green Label Plus Certified #3082
NSF 140	Gold
Carbon	Net Positive Carbon (Neutral +5%)

### SERVICE

---

Warranties	Lifetime Limited Unibond Plus Warranty, Lifetime Limited Duracolor® Stain Warranty, Lifetime Static
------------	---



# Specifications CARPET TILE

## Faculty Renewal (GT368)

### DESIGN

Size	24" x 24" (.6096 m x .6096 m)
Surface Appearance	Textured Multi-Colored Loop
Fiber Type	Duracolor® Tricolor Premium Nylon
Dye Method	Solution Dyed
Colors Available	14

### PERFORMANCE

Construction	Tufted
Gauge	1/12" (47.00 rows per 10cm)
Stain Release Technology	Permanent, Built into the Fiber
Soil Release Technology	EcoSentry Soil Protection
Backing Material	EcoFlex™ ONE
Flammability	ASTM E 648 - Class 1 (Glue Down)
Smoke Density	ASTM E 662 - Less than 450
Static Propensity	AATCC - 134 Under 3.5 KV

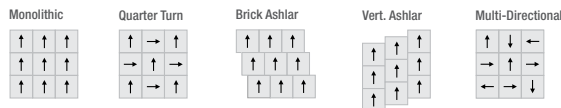
### SUSTAINABILITY

Certification	Living Product Challenge Petal Certified; Declare Red List Free
Indoor Air Quality	Green Label Plus Certified #1171
NSF 140	Platinum
Carbon	Net Positive Carbon (Neutral +5%)
Water	Net Positive Water (Neutral +5%)

### SERVICE

Warranties	Lifetime Limited Carpet Tile Warranty, Lifetime Limited Duracolor® Stain Warranty, Lifetime Static
------------	--

Installation Instructions:



Mohawk Group warrants its adhesives for the life of the original installation only when a Mohawk Group style (product) is installed. Mohawk's floor preparation procedures must be followed to ensure that the substrate has been prepared properly. Failure to use Mohawk Group adhesives or to follow Mohawk's floor preparation procedures will void all lifetime adhesive warranties. Please contact your local Sales Representative for installation guidelines.

**These patterns contain inherent characteristics which may result in pattern run off and/or pattern appearance variations at the seams or tile edges (darker or lighter pattern lines). These characteristics are inherent in the patterns and are not manufacturing defects. Consideration to these characteristics should be given when selecting an installation method.**

Chair pads are recommended under office chairs with roller casters to preserve appearance retention, act as a deterrent toward delamination and to prevent premature or accelerated wear. Walk-off tiles from the Tuff Stuff II Collection are recommended at entryways to reduce soiling.

Mohawk Group is providing this architect folder for the purpose of promoting our commercial business. This folder and its samples shall remain the property of Mohawk Group. Color may vary from dye lot to dye lot. Substitution of material may be made due to improved technology, supply limitations or other factors. The performance of this product is not affected by such variations.

For current and complete specifications please visit [www.mohawkgroup.com](http://www.mohawkgroup.com)



Recycled with recycled materials



