



# AREA RUGS



# Area Rugs

## RUG PROGRAM OFFERED ON MAS: GS-O3F-077AA

As the worldwide leader in flooring, Mohawk Group manufactures a broad range of award-winning modular and broadloom carpet, LVT, HVT, resilient sheet flooring and area rugs for all types of commercial buildings. The increasing popularity of LVT has fueled great demand for commercial-quality area rugs to enhance conference spaces, workplaces and seating areas in lobbies.

Mohawk Group rugs provide a beautiful design dimension that quickly infuses spaces with color and texture, adds warmth, improves acoustics, and creates destination zones for building occupants and visitors.

Our rugs are made with the same highly durable nylon as our carpet to ensure easy maintenance, stain resistance and long-term performance. Additionally, they come with skid-resistant backing and ADA-compliant reducer edge treatments.

### Specifications for GSA Rugs

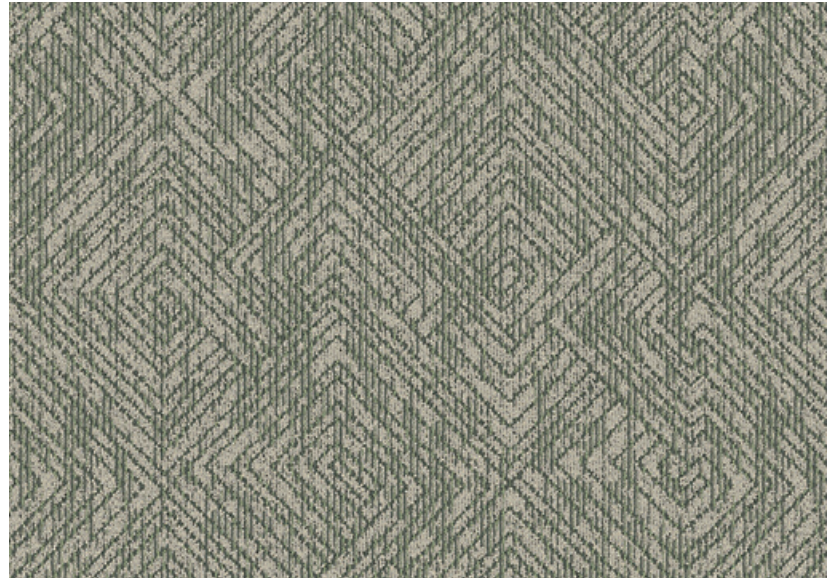
- Solution Dyed Nylon
- Skid-Resistant Backing
- ADA-Compliant Rubber Edge
- Available Dimensions:  
6'x9', 9'x12', 12'x15'

**ADA COMPLIANT**





Klamath



Oneida

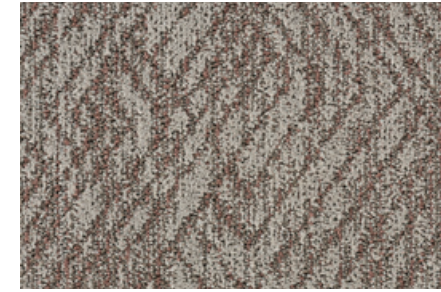


Mille Lacs



637 Garden Path

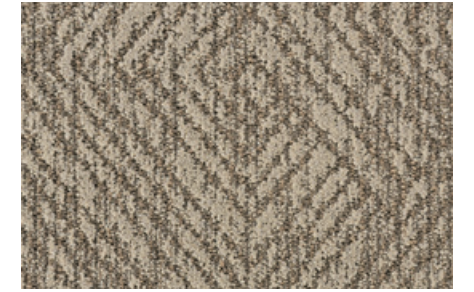
COLOR OPTIONS



449 Desert Shadows



637 Garden Path



747 Jute



957 Mysterious



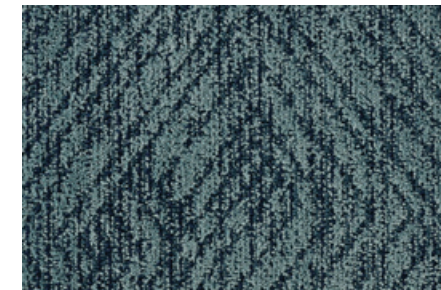
737 Natural Linen



739 Potter's Clay



939 Silver Lining



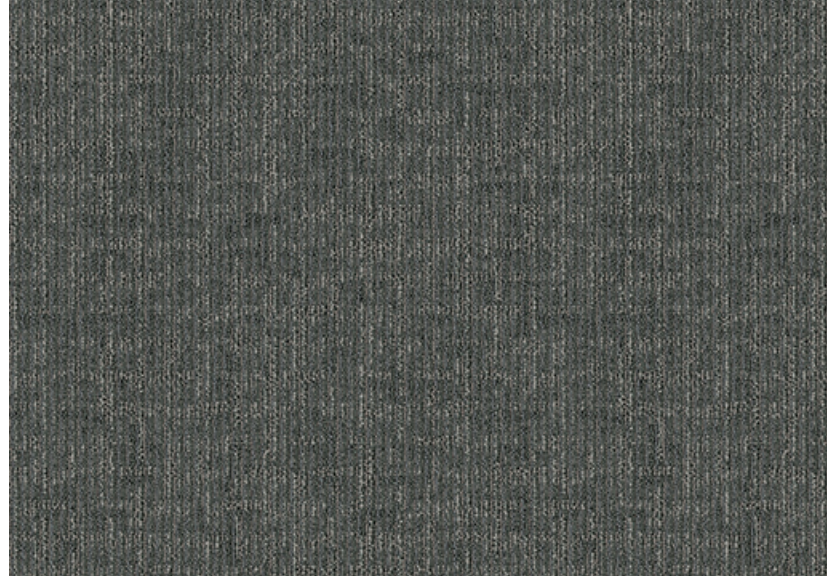
575 Twilight



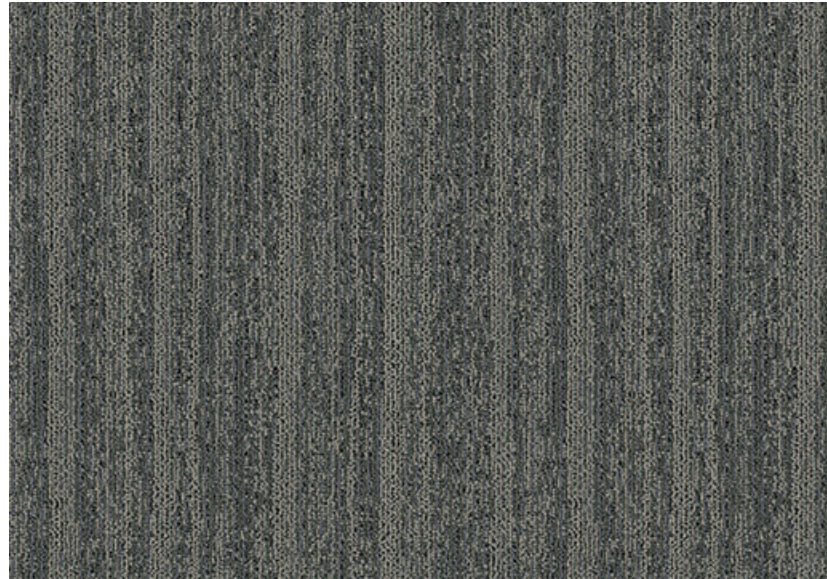
545 Winter Solstice



Naknek



Mead



955 Bespoke Fabric

COLOR OPTIONS



751 Art Cloth



955 Bespoke Fabric



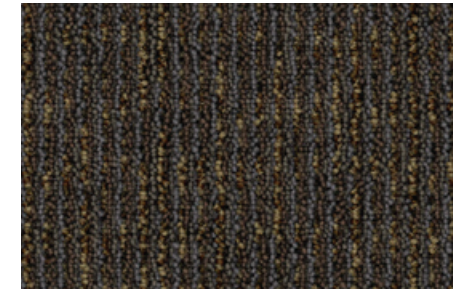
862 Fiber Collage



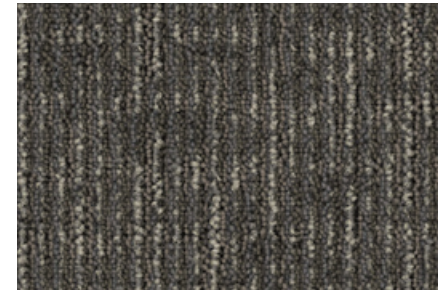
859 Found Object



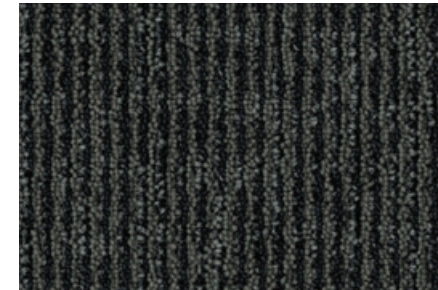
152 Morphed Macrame



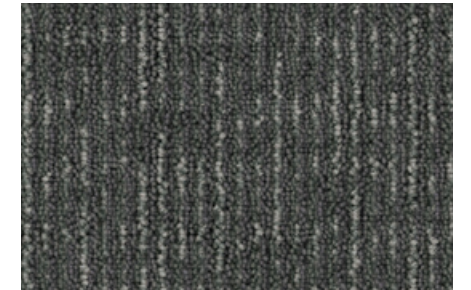
883 Organic Textile



358 Reshaped Felt



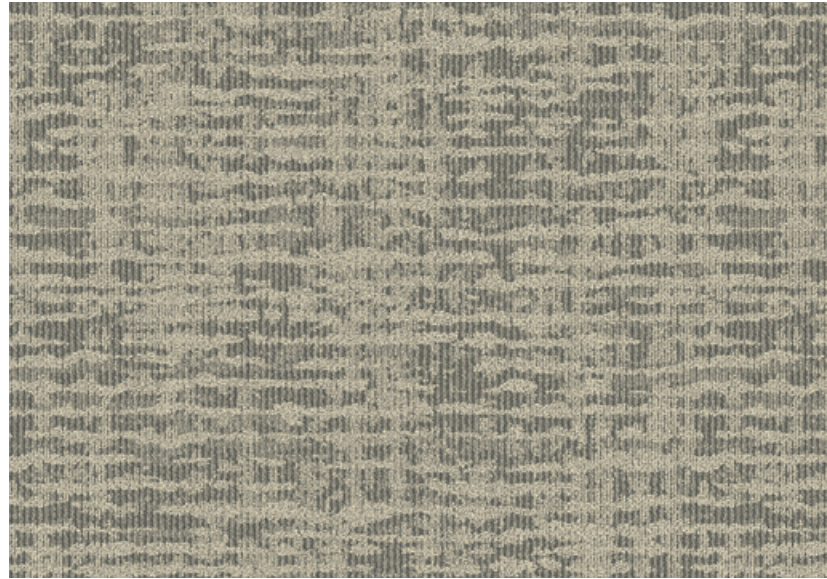
999 Tooled Surface



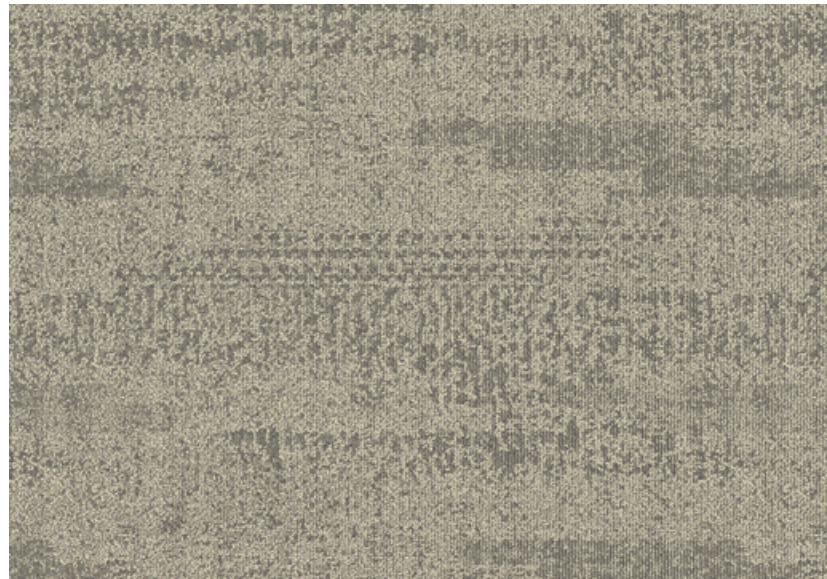
983 Wrapped Shibori



COLOR OPTIONS



Ouachita



Teshepuk

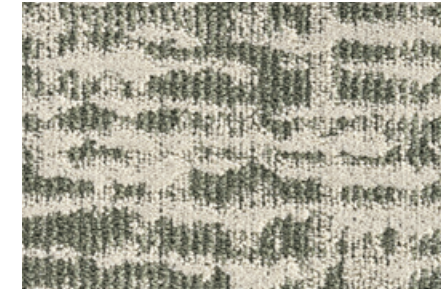


Salton

739 Potters Clay



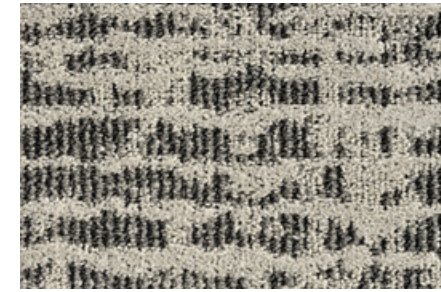
449 Desert Shadows



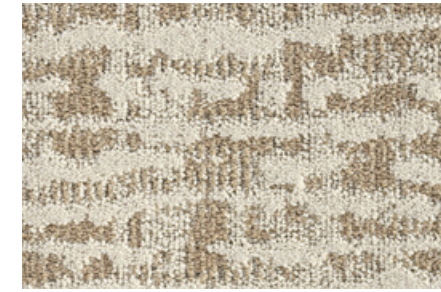
637 Garden Path



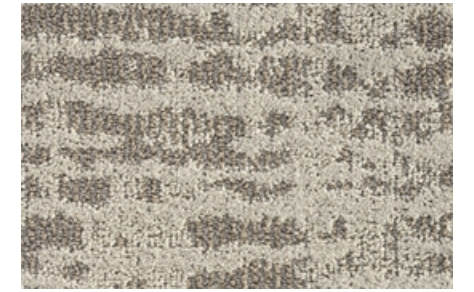
747 Jute



957 Mysterious



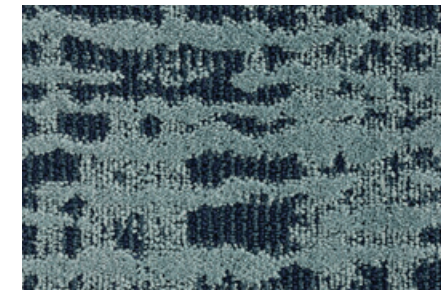
737 Natural Linen



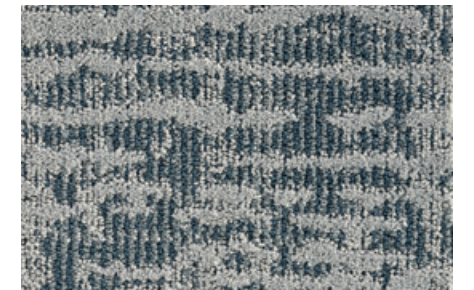
739 Potters Clay



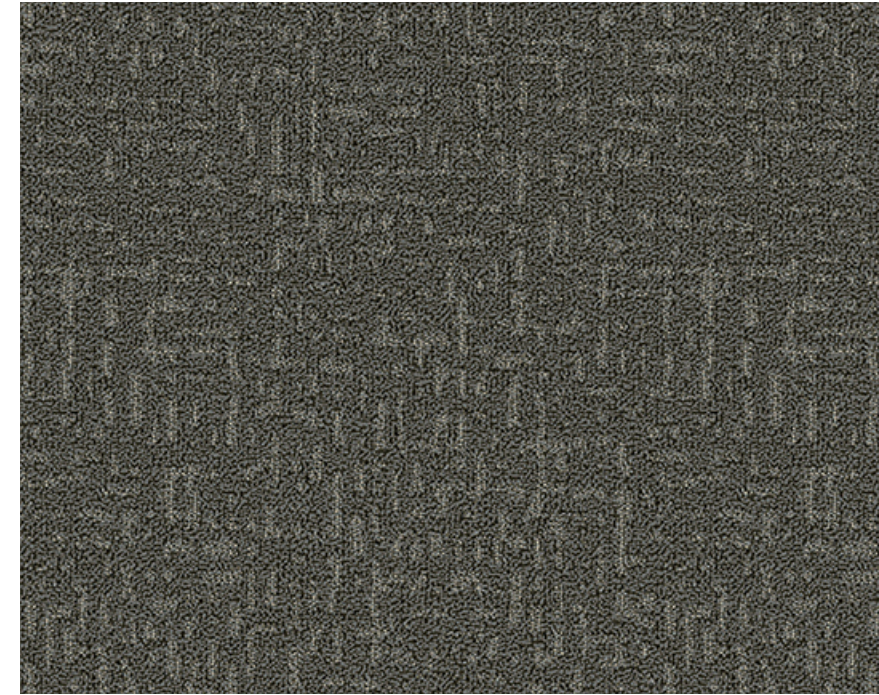
939 Silver Lining



575 Twilight

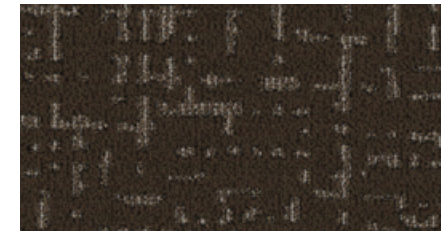


545 Winter Solstice



965 Stainless

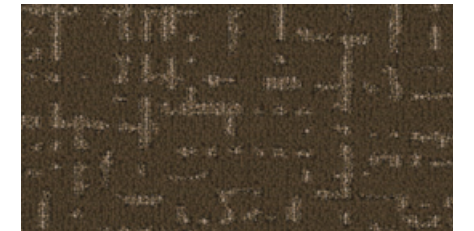
### Selawik



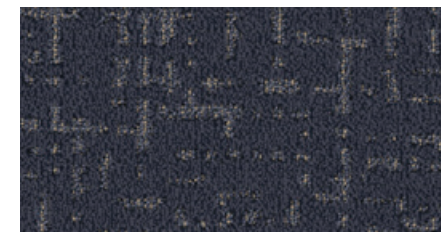
869 Brunneous



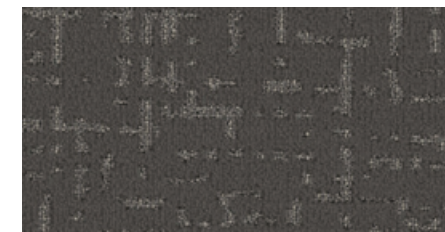
859 Brushed Metal



858 Melichrous



553 Perse



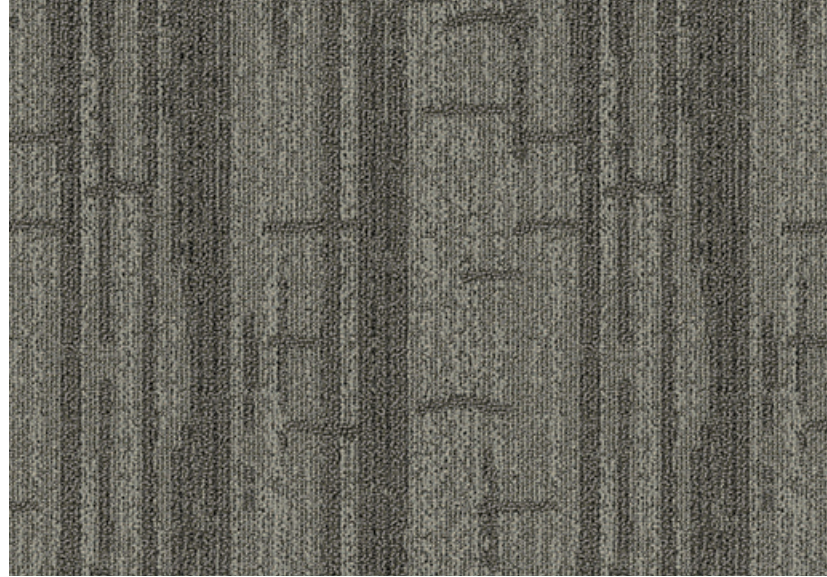
965 Stainless



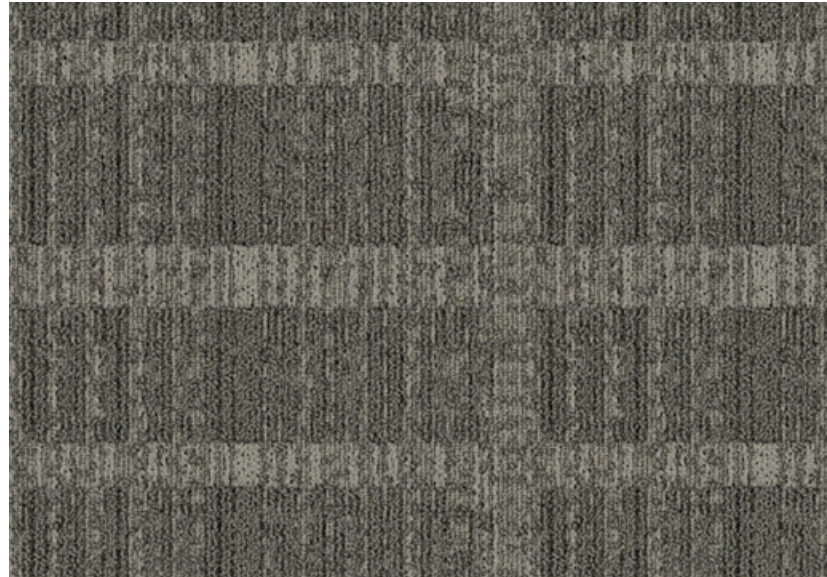
141 Wheaten



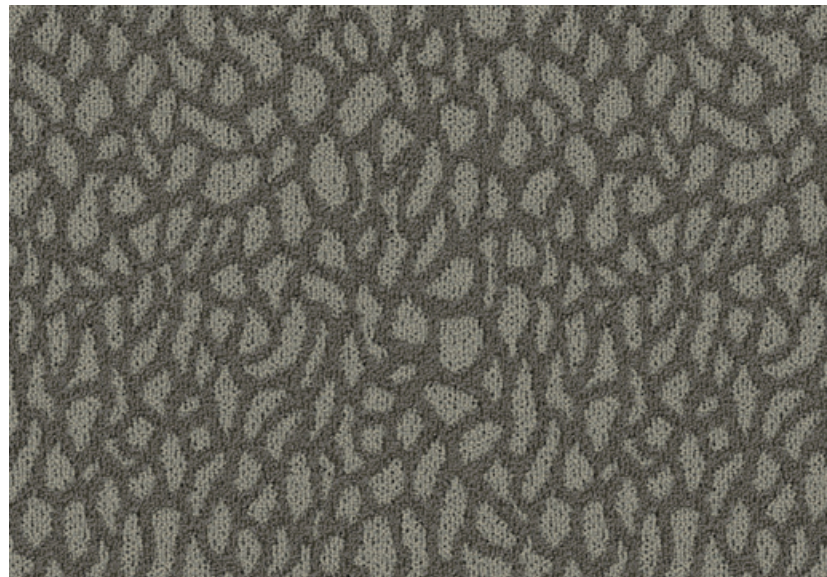
Becharof



Champlain

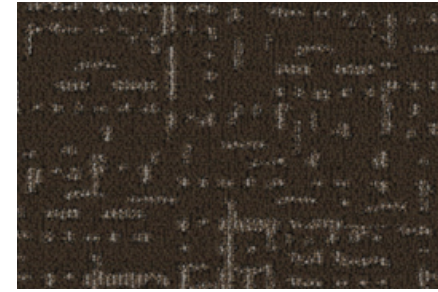


Sakakawea

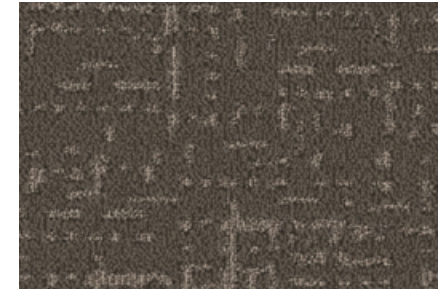


965 Stainless

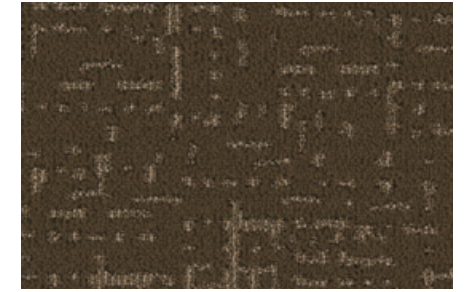
COLOR OPTIONS



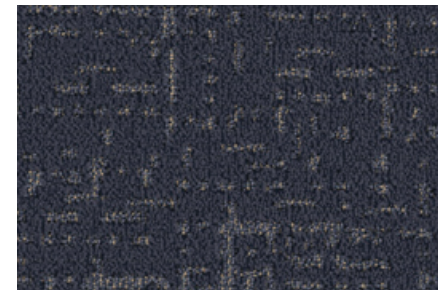
869 Brunneous



859 Brushed Metal



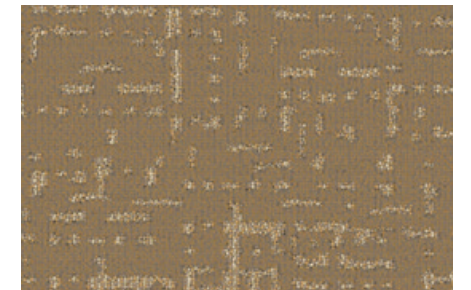
858 Melichrous



553 Perse



965 Stainless



141 Wheaten



# Pontchartrain

\$\$\$



Stoneware

# Okeechobee

\$\$\$

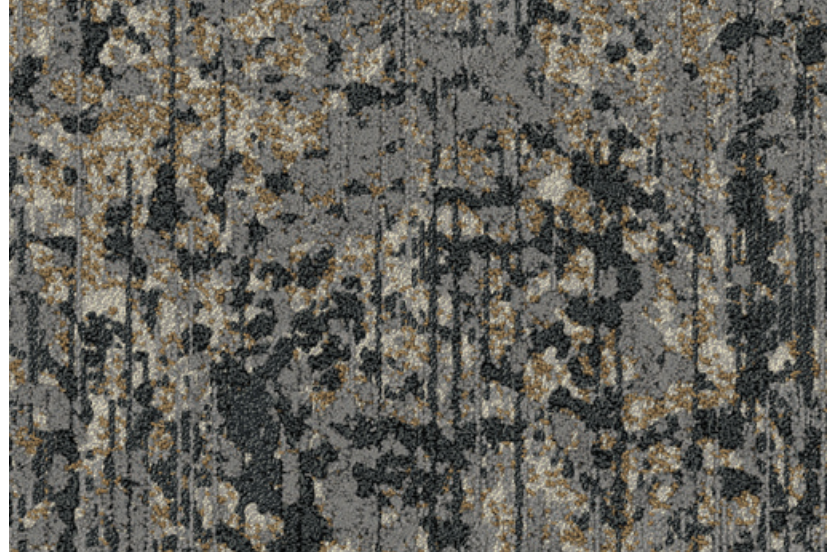


Glaze

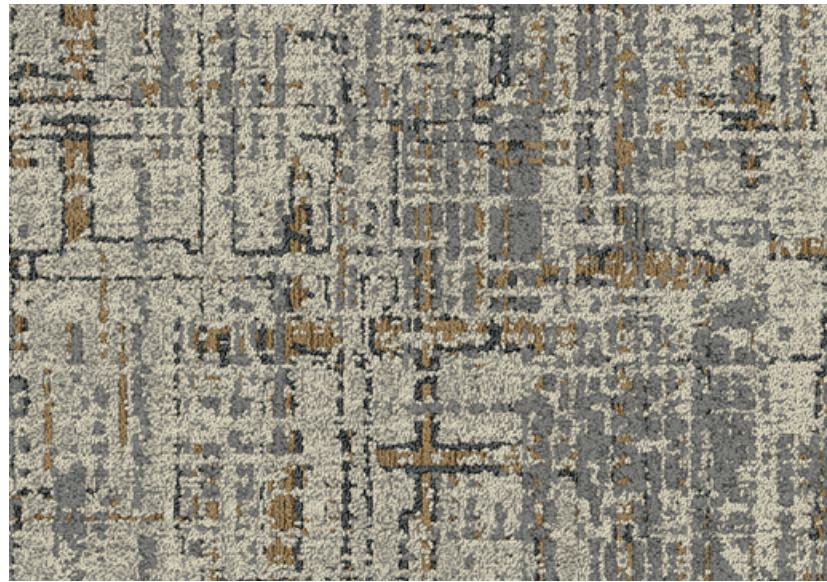




Oahe



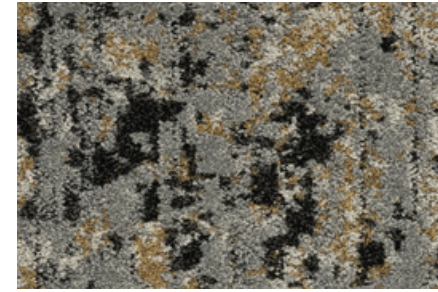
Great Salt



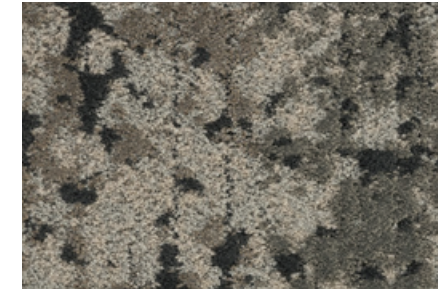
938 Cascade

COLOR OPTIONS

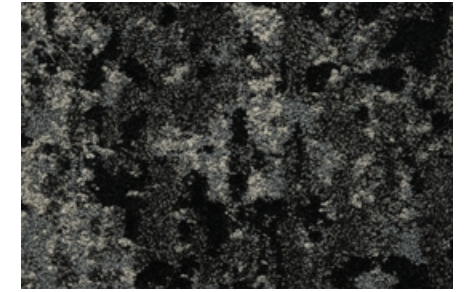
\$\$\$



938 Cascade



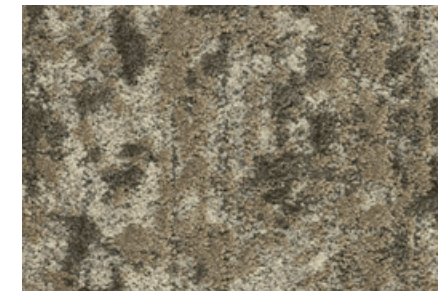
959 Inlet



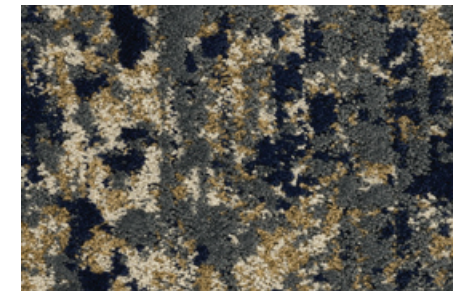
985 Nightwater



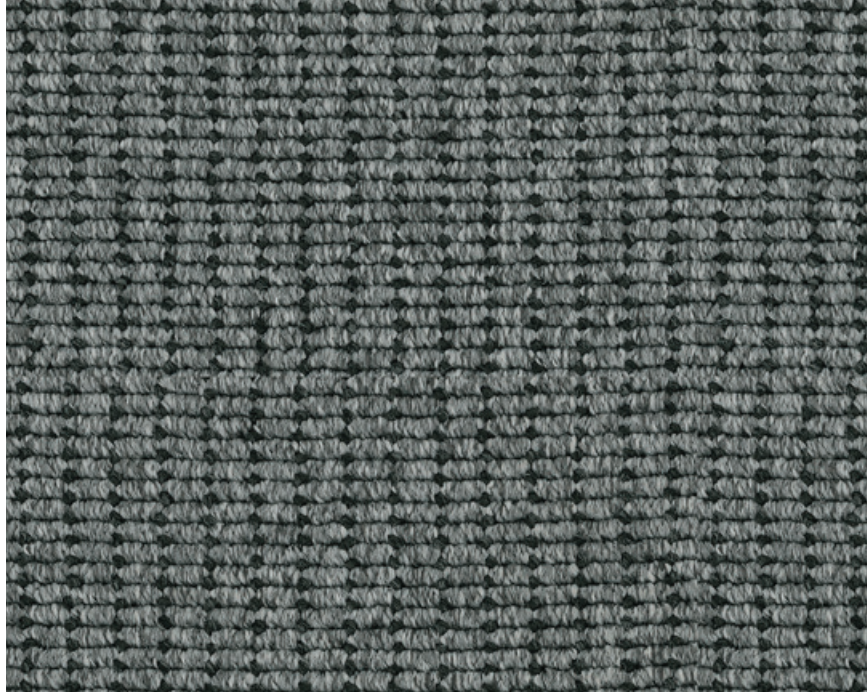
525 Ocean Spray



838 Pier

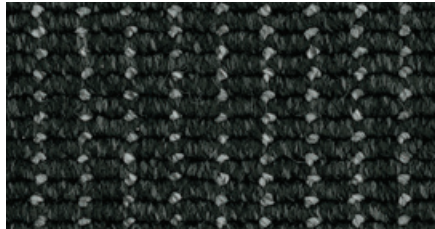


548 Riverside

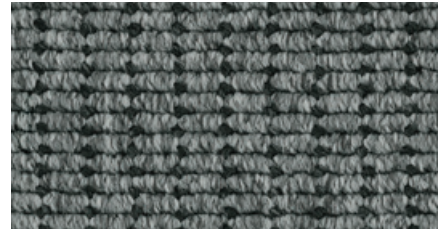


949 Carbon

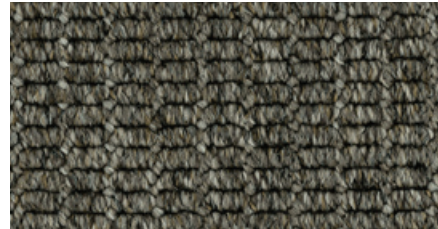
Iliamna  
WOVEN  
\$\$\$\$



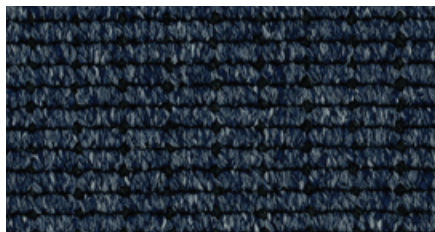
969 Black Bean



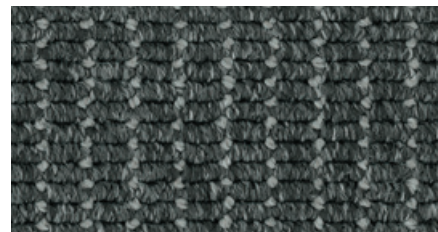
949 Carbon



838 Clay Soil



534 Cornflower

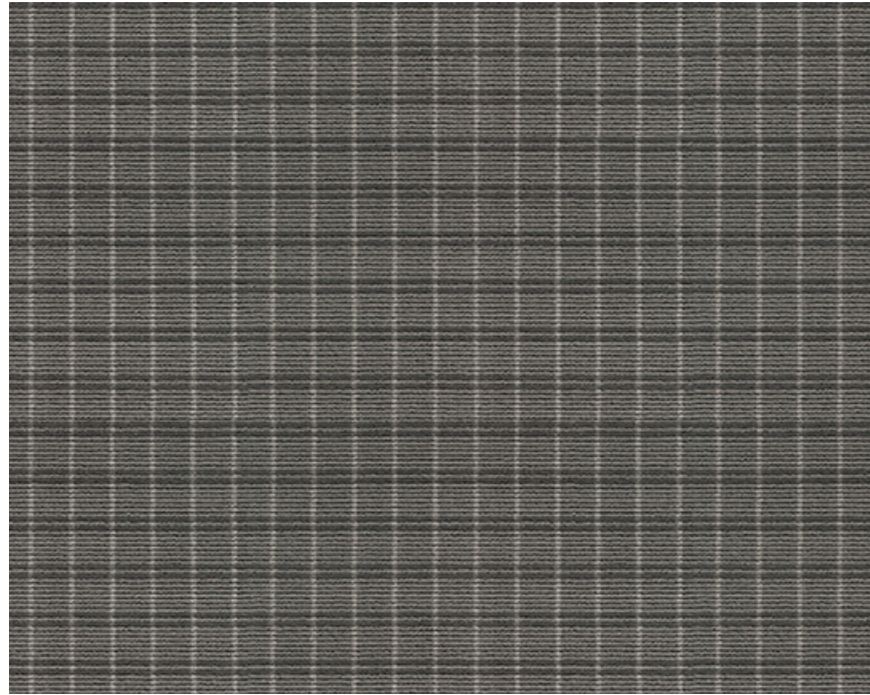


959 Mineral Dust



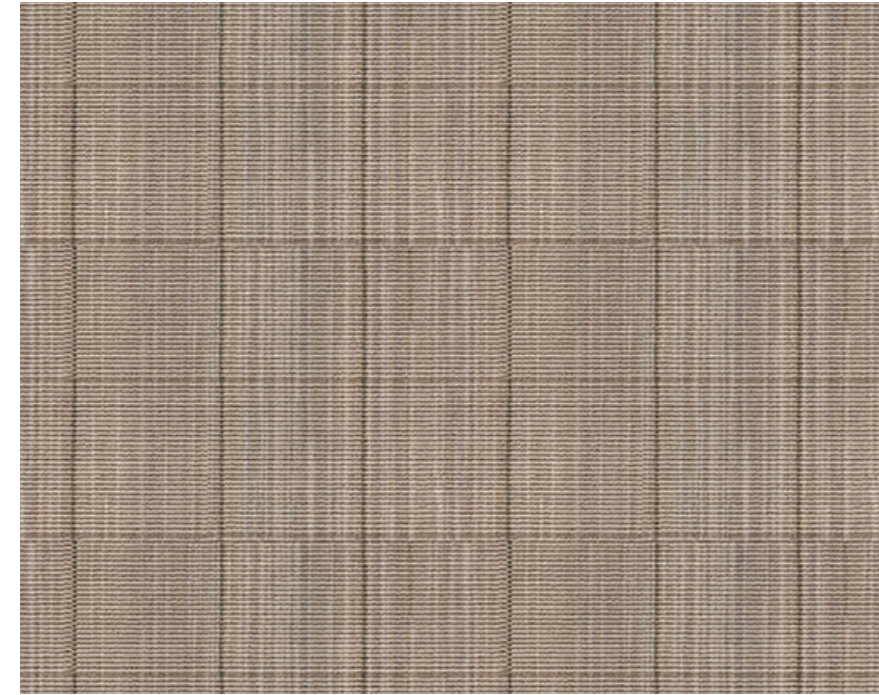
828 Tea Leaf





Cayuga  
WOVEN  
\$\$\$\$

968 Smoke



Pickwick  
WOVEN  
\$\$\$\$

139 Cornsilk



989 Carbon



739 Chenille



878 Dunes



955 Ash Grey



718 Bone



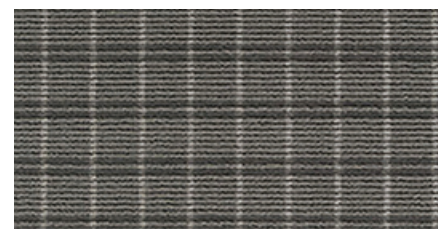
878 Bronze



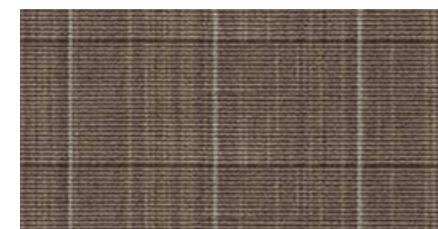
148 Moccasin



969 Puritan



968 Smoke



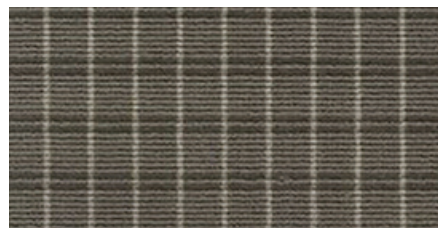
851 Camel



139 Cornsilk



978 Dark Lava



851 Stone Hearth



985 Storm



721 Wood Ash



859 Shadow



989 Smokey Black

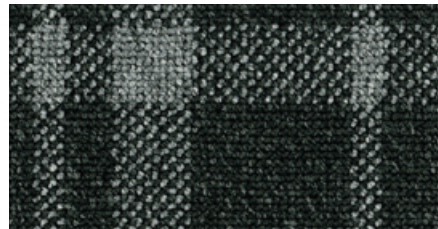


828 Wenge

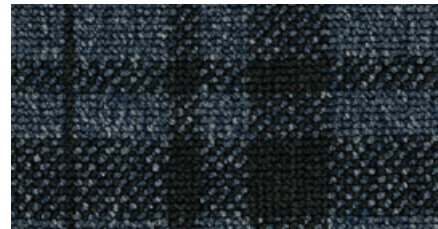
### Grenada

WOVEN

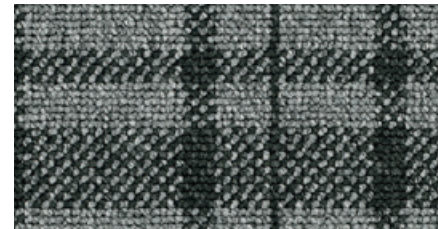
\$\$\$\$



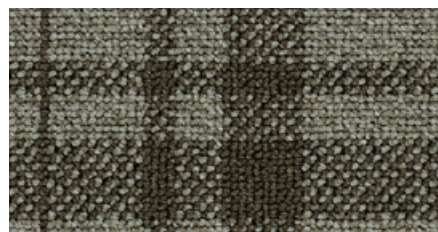
969 Jet



534 Liberty



949 Marengo



828 Wenge

# Beyond Carbon Neutral



SINCE  
**2022**

All products carbon neutral

PLUS an additional 5% for a net-positive impact on the planet

# 2040

Net zero carbon emissions

We've signed The Climate Pledge to be net zero in emissions by 2040 and have already started major changes to reduce our carbon footprint.

Neutral is not enough.

With our holistic improvement of the life cycle of our flooring products— from full product transparency, to reduced water usage in manufacturing, to carbon neutrality and beyond—better is just the beginning.

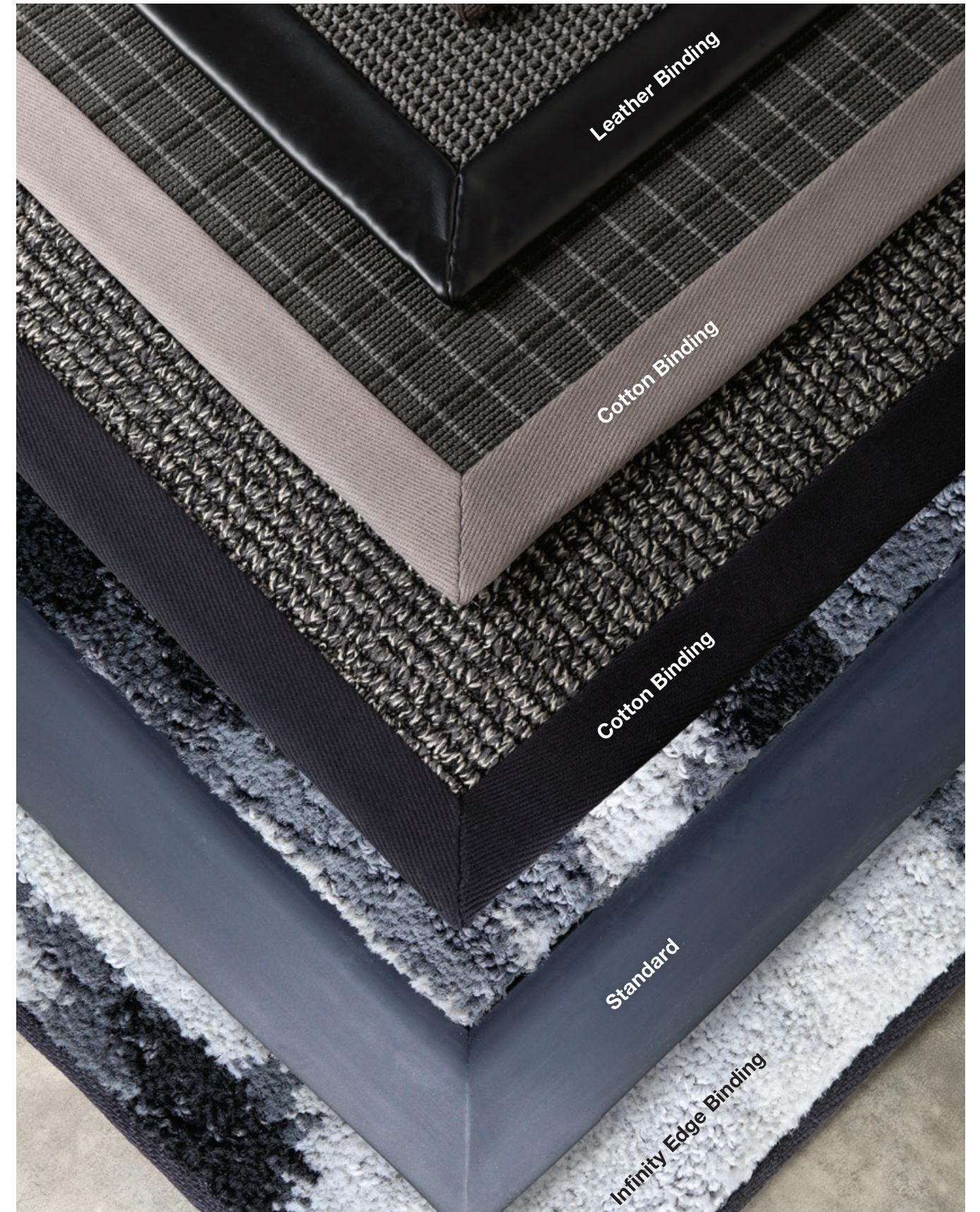
THE  
CLIMATE  
PLEDGE



Better for our world means doing more to stop and reverse climate change.



Alternative edge treatments, backings and dimensions are available as custom orders.



Optional Binding Edges

# Believe in Better™

Beyond  
Carbon  
Neutral



RECOVER

Declare.

AREA RUGS | CARPET TILE | CYP | LVT | PDI | RESILIENT | REVWOOD | RUBBER | SYNTHESIS | TUFTED

