

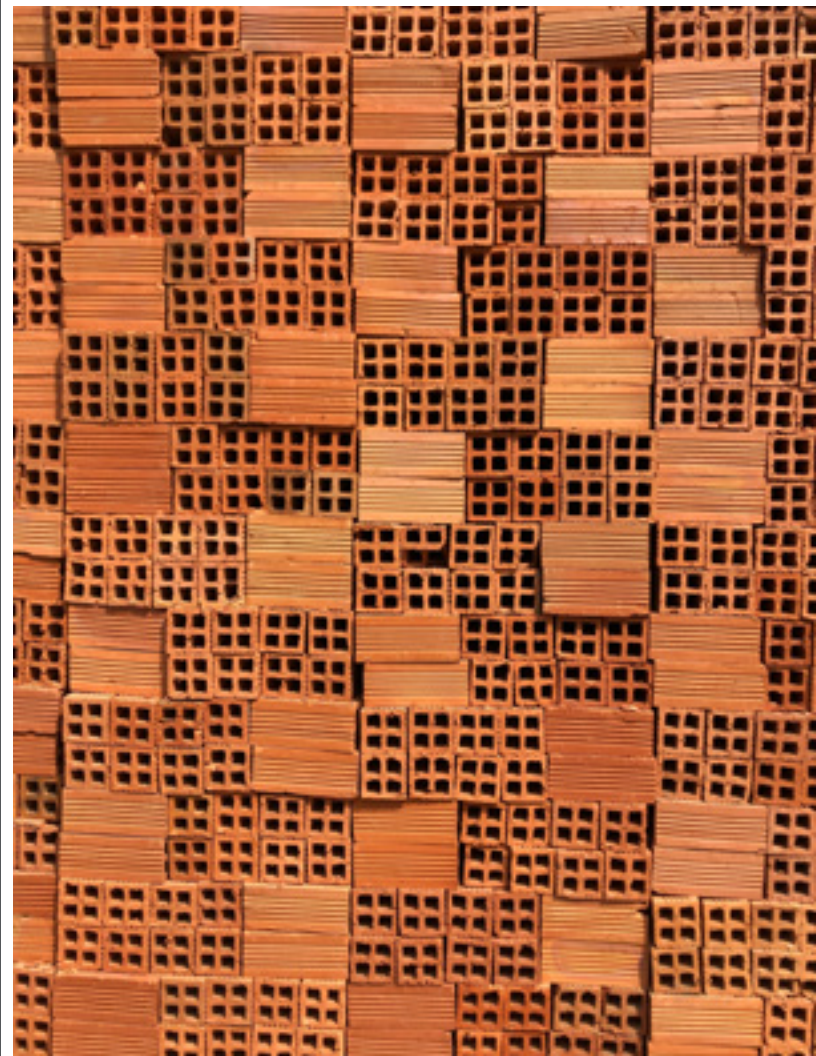


ENVIRONMENTAL SHIFTS

DURKAN

ENVIRONMENTAL SHIFTS COLLECTION

Environmental Shifts is a collection of designs that playfully explore the intersection of color and pattern. From bold geometrics to soft organics, create one of a kind landscapes utilizing the designs in both plank and tile formats, shifting the boundaries of installation limitations. Durkan's innovative Synthesis technology combined with industry leading Precision Dye Injection allows designers the opportunity to truly flex their creative merit. Synthesis provides unique cut and loop textured bases that bring even more life to the design, and with nearly unlimited color possibilities to choose from, each design can be tailored to any project's aesthetic.



Cover: CT71431, CT71432
Right: CT81319, CT81320, CT81321



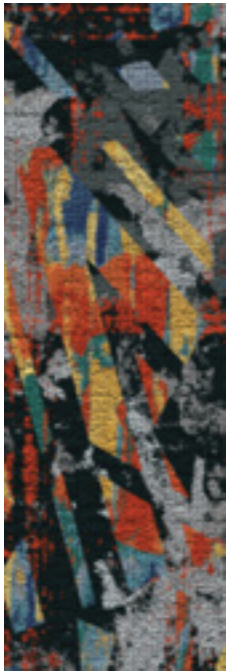


Ashlar Stepping Tile And Plank Combo

Featured on Beach Breaker Synthesis base.



CT81319
24" X 24" PDI Tile



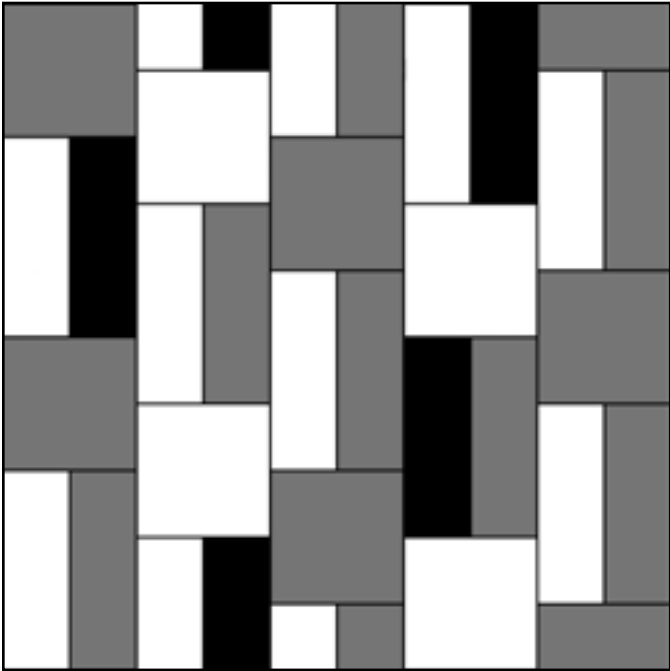
CT81319
12" X 36" PDI Plank



CT81320
12" X 36" PDI Plank



CT81321
12" X 36" PDI Plank

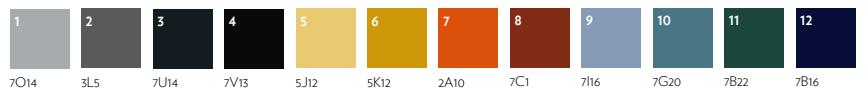


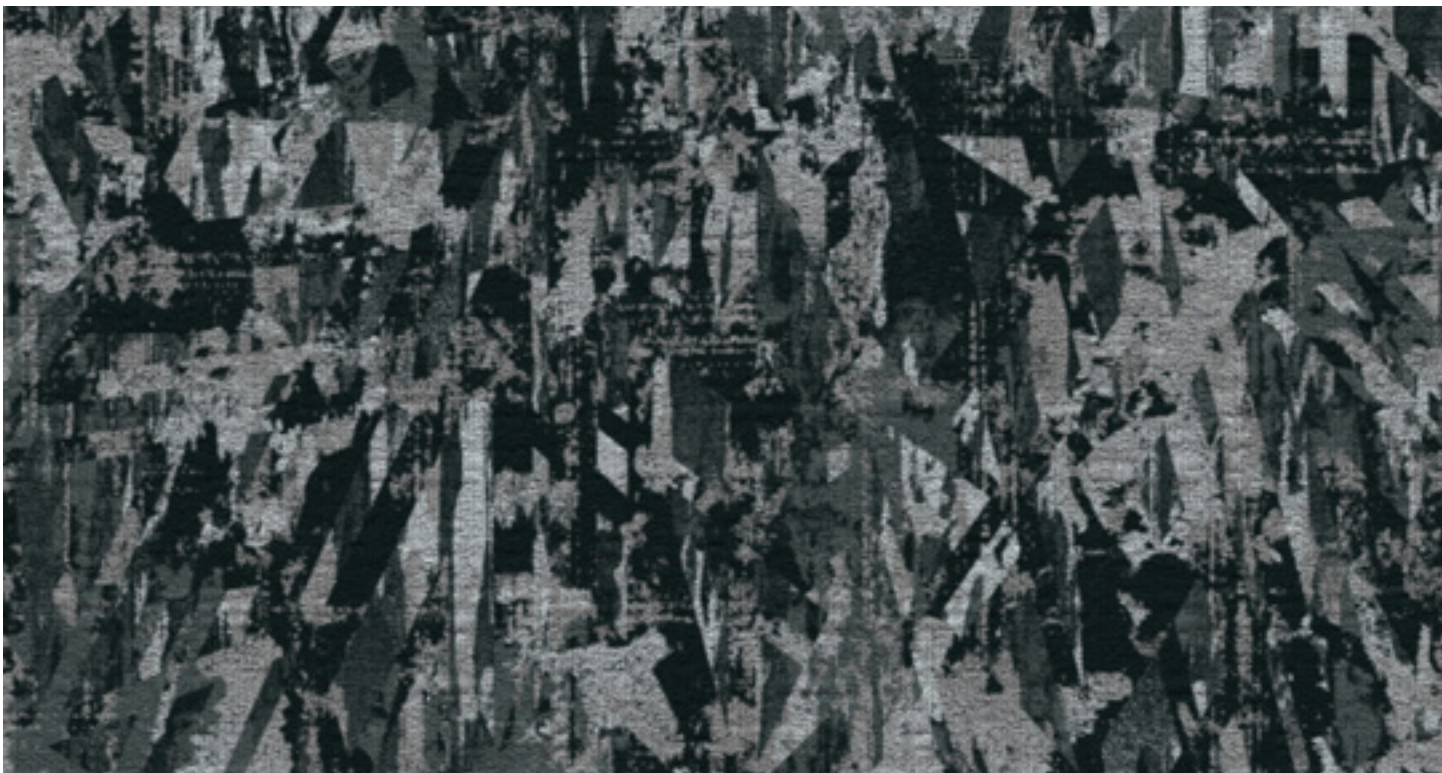
CT81319 TILE CT81320 PLANK CT81319 PLANK CT81321 PLANK



CT81319
12" X 36" PDI Plank (shown above)
24" X 24" PDI Tile

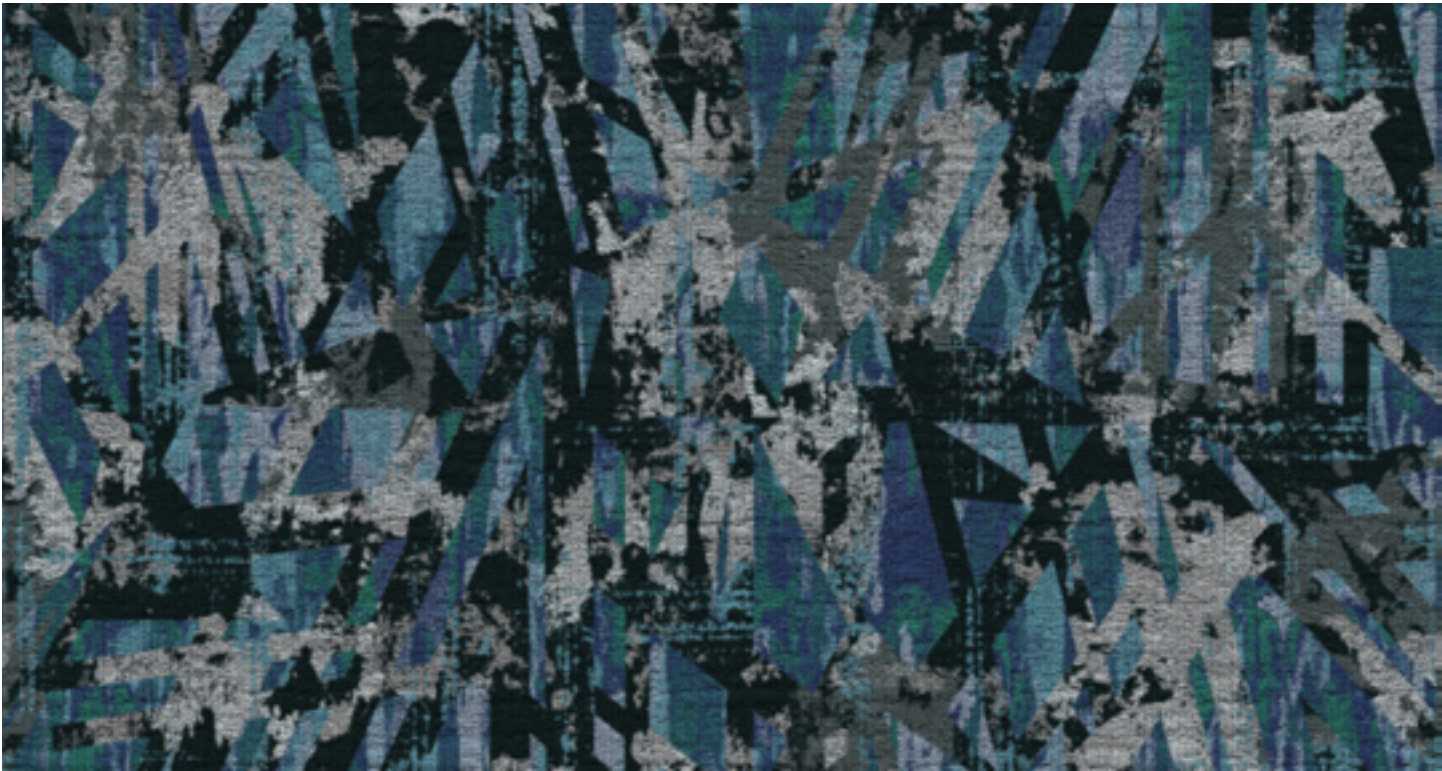
D80723
PDI Broadloom
72" (w) X 82" (l)





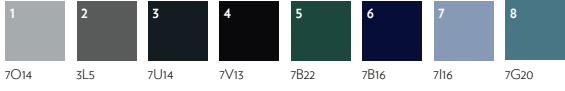
CT81320
 12" X 36" PDI Plank (shown above)
 24" X 24" PDI Tile

D80724
 PDI Broadloom
 72" (w) X 82" (l)



CT81321
 12" X 36" PDI Plank (shown above)
 24" X 24" PDI Tile

D80725
 PDI Broadloom
 72" (w) X 82" (l)



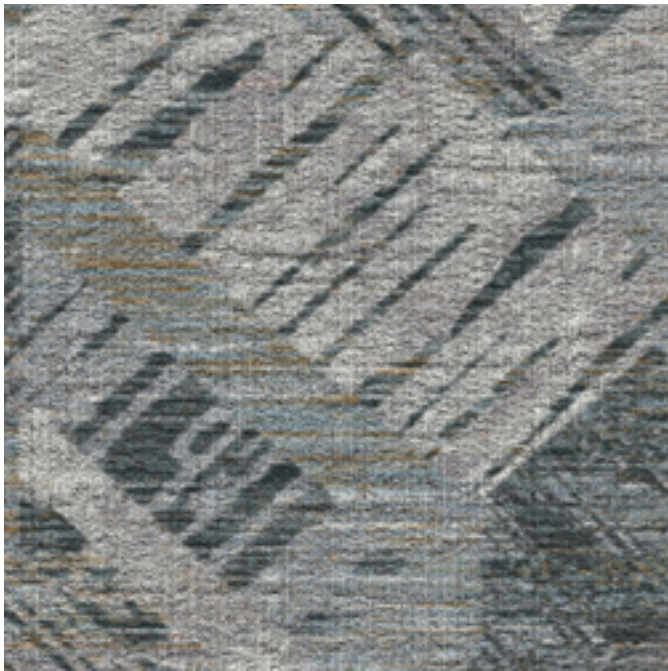


Ashlar Stepping Tile And Plank Combo

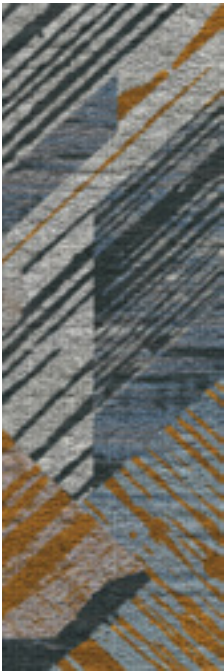
Featured on Beach Breaker Synthesis base.



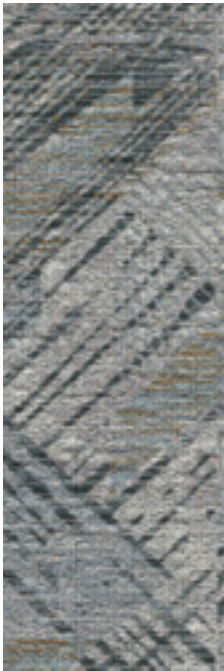
CT71431
24" X 24" PDI Tile



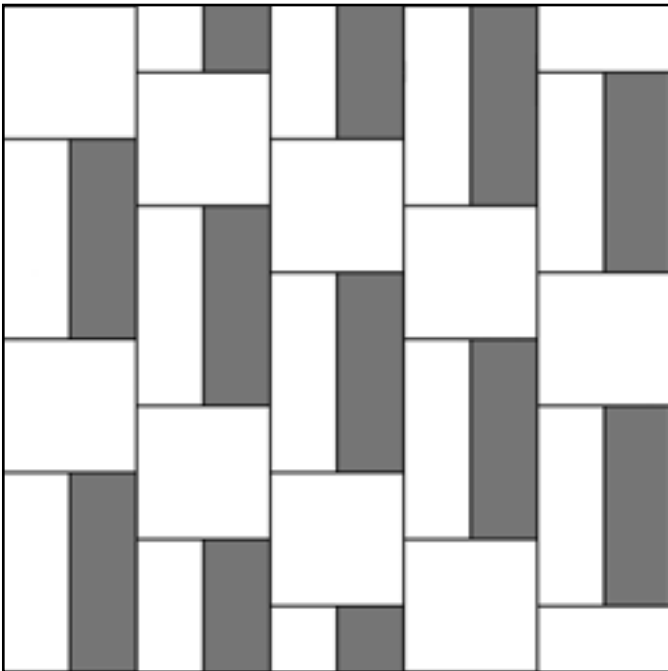
CT71432
24" X 24" PDI Tile



CT71431
12" X 36" PDI Plank



CT71432
12" X 36" PDI Plank

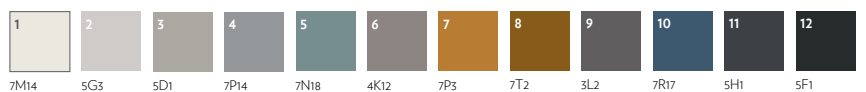


CT71431 TILE CT71431 PLANK CT71432 PLANK



CT71431
12" X 36" PDI Plank (shown above)
24" X 24" PDI Tile

D81326
PDI Broadloom
72" (w) X 108" (l)





CT71432
12" X 36" PDI Plank (shown above)
24" X 24" PDI Tile

D81325
PDI Broadloom
72" (w) X 108" (l)



7M14 5G3 7P14 7N18 4K12 7T2 5H1 5F1



Ashlar Stepping Tile And Plank Combo

Featured on Second Wave Synthesis base.



CT71449
24" X 24" PDI Tile



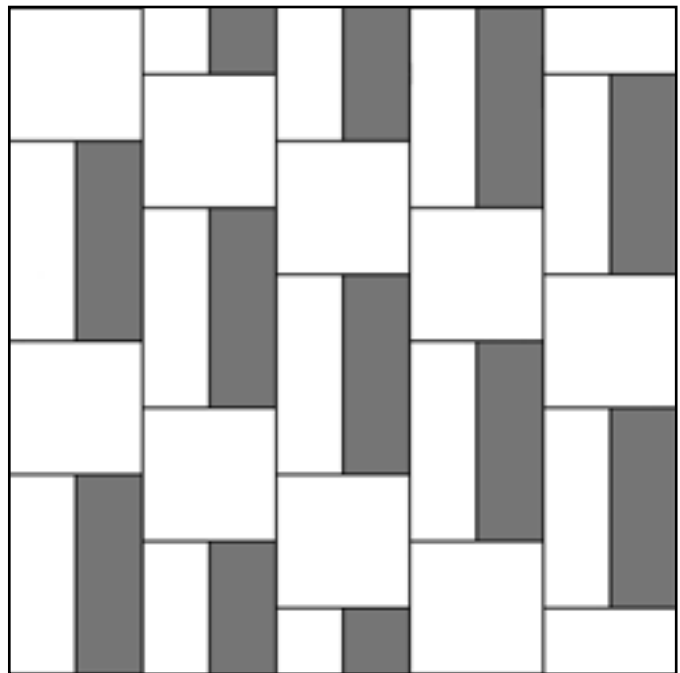
CT71450
24" X 24" PDI Tile




CT71449
12" X 36" PDI Plank



CT71450
12" X 36" PDI Plank

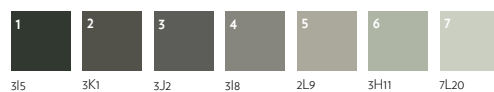


 CT71450 TILE  CT71450 PLANK  CT71449 PLANK



CT71449
12" X 36" PDI Plank (shown above)
24" X 24" PDI Tile

D81333
PDI Broadloom
72" (w) X 72" (l)





CT71450
12" X 36" PDI Plank (shown above)
24" X 24" PDI Tile

D81334
PDI Broadloom
72" (w) X 72" (l)



3J2 3I8 2L9 3H11 3L11 7L20

DURKAN

Environmental Shifts Collection

SYNTHESIS

Synthesis by Durkan is an innovative, patented breakthrough in carpet technology. The proprietary Synthesis process layers pattern and texture to provide unprecedented 3D image quality and clarity. Never before has this combination of patterning and textural effect been achieved in hospitality flooring. The result is a unique layering effect that brings tremendous depth and richness to carpet design.

To learn more and discover other Synthesis base options please visit <https://www.mohawkgroup.com/durkan/synthesis>



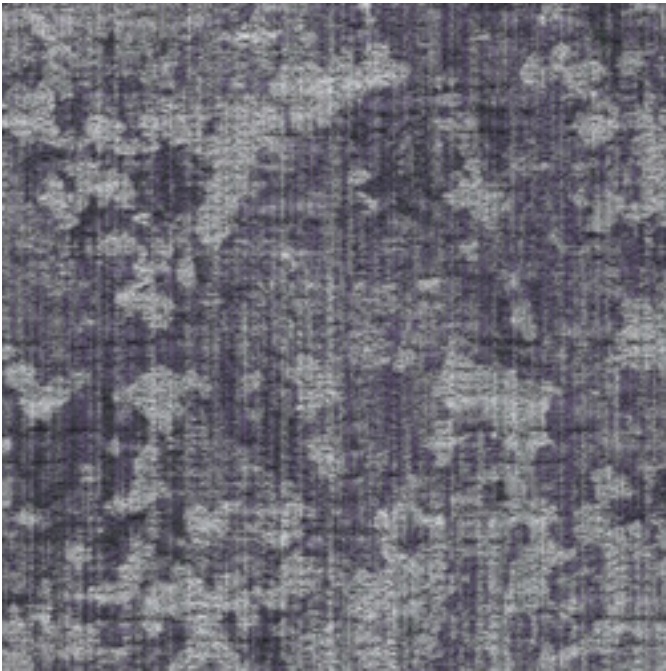
Right: CT81315, CT81316





Monolithic Method Install Tile And Plank Combo

Featured on Beach Breaker Synthesis base.



CT81315
24" X 24" PDI Tile



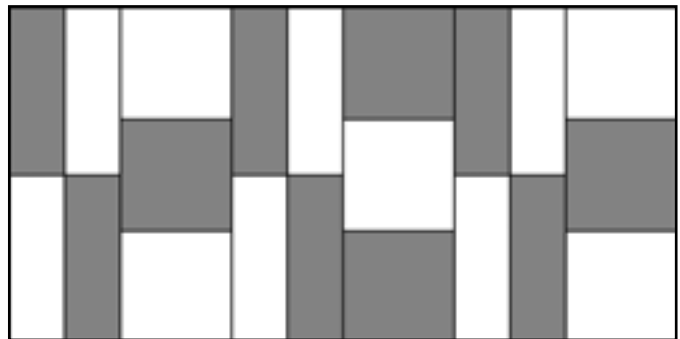
CT81316
24" X 24" PDI Tile



CT81315
12" X 36" PDI Plank



CT81316
12" X 36" PDI Plank

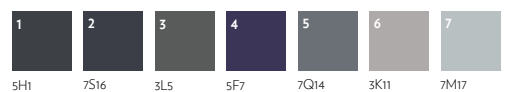


■ CT81315 TILE ■ CT81315 PLANK □ CT81316 PLANK □ CT81316 TILE



CT81315
12" X 36" PDI Plank (shown above)
24" X 24" PDI Tile

D81339
PDI Broadloom
72" (w) X 126" (l)

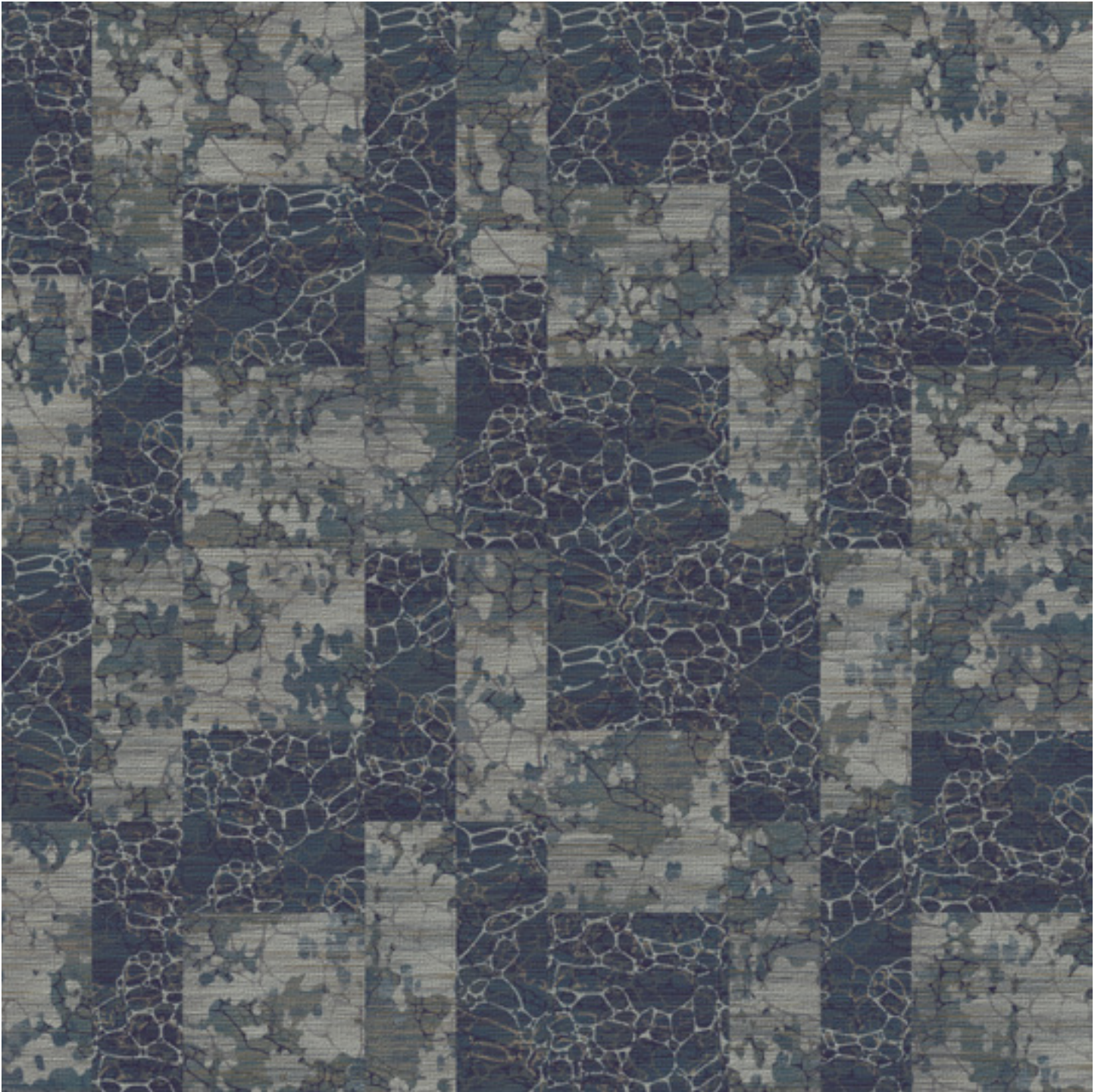




CT81316
12" X 36" PDI Plank (shown above)
24" X 24" PDI Tile

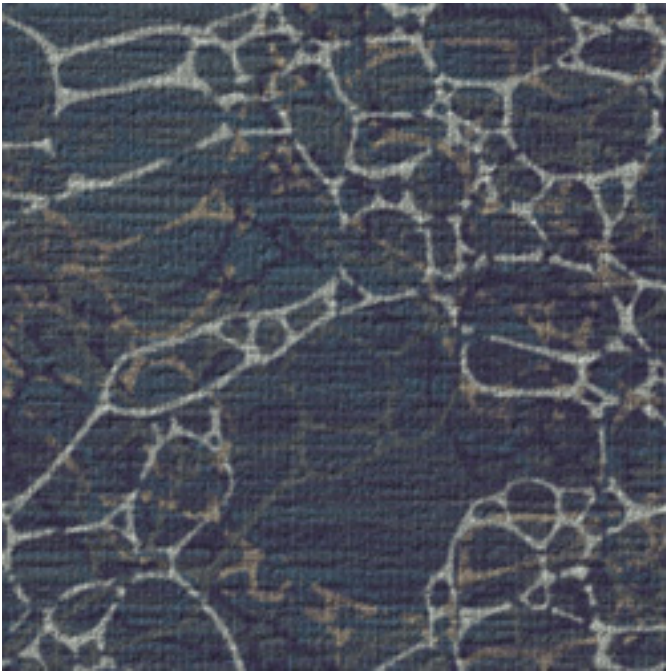
D81340
PDI Broadloom
72" (w) X 126" (l)





Monolithic Method Install Tile And Plank Combo

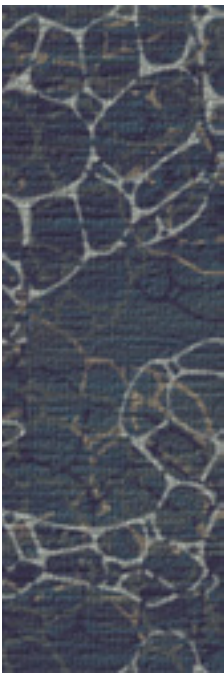
Featured on Second Wave Synthesis base.



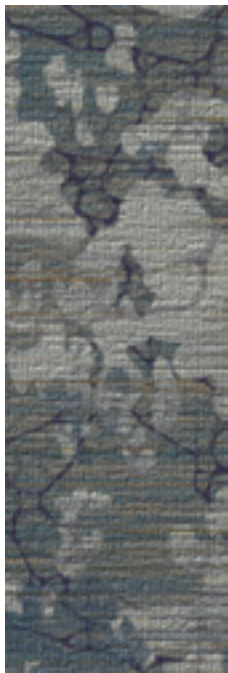
CT71446
24" X 24" PDI Tile



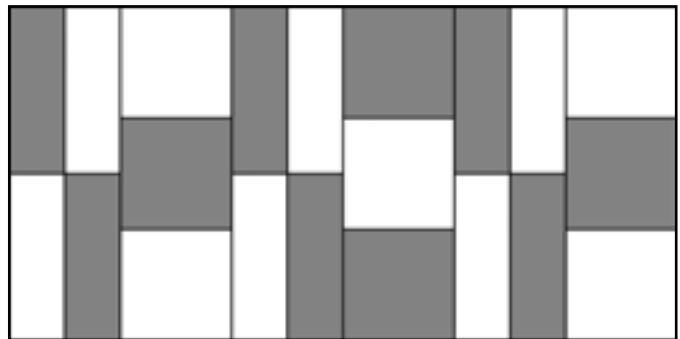
CT71429
24" X 24" PDI Tile



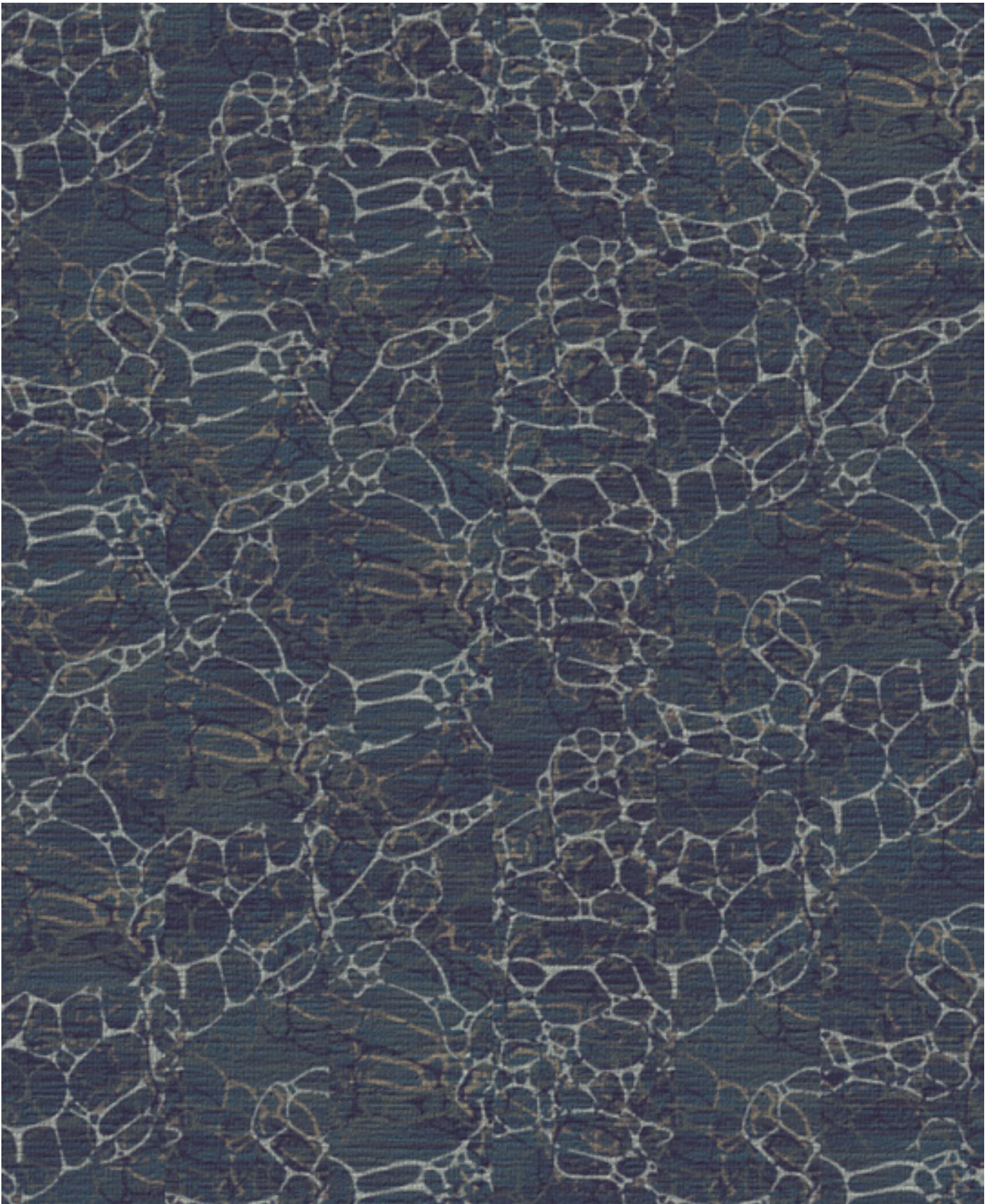
CT71446
12" X 36" PDI Plank



CT71429
12" X 36" PDI Plank

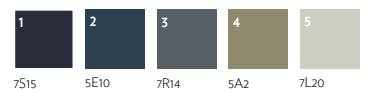


CT71446 TILE CT71446 PLANK CT71429 PLANK CT71429 TILE



CT71446
12" X 36" PDI Plank (shown above)
24" X 24" PDI Tile

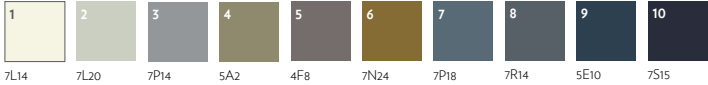
D81323
PDI Broadloom
72" (w) X 72" (l)





CT71429
12" X 36" PDI Plank (shown above)
24" X 24" PDI Tile

D81324
PDI Broadloom
72" (w) X 108" (l)



DURKAN

Environmental Shifts Collection

PRECISION DYE INJECTION (PDI)

Set your imagination free with our new PDI tile program. Designs that can transform any space into an interchangeable design landscape. Durkan's state-of-the-art Precision Dye Injection (PDI) technology for carpet tile combines the best of both worlds: high resolution pattern design and customization with up to 12 colors and the added wear and maintenance advantages of modular flooring. PDI tile allows you to create enduring pattern combinations and easy-to-install formats while increasing longevity with selective replacement of individual damaged tiles instead of the entire floor.

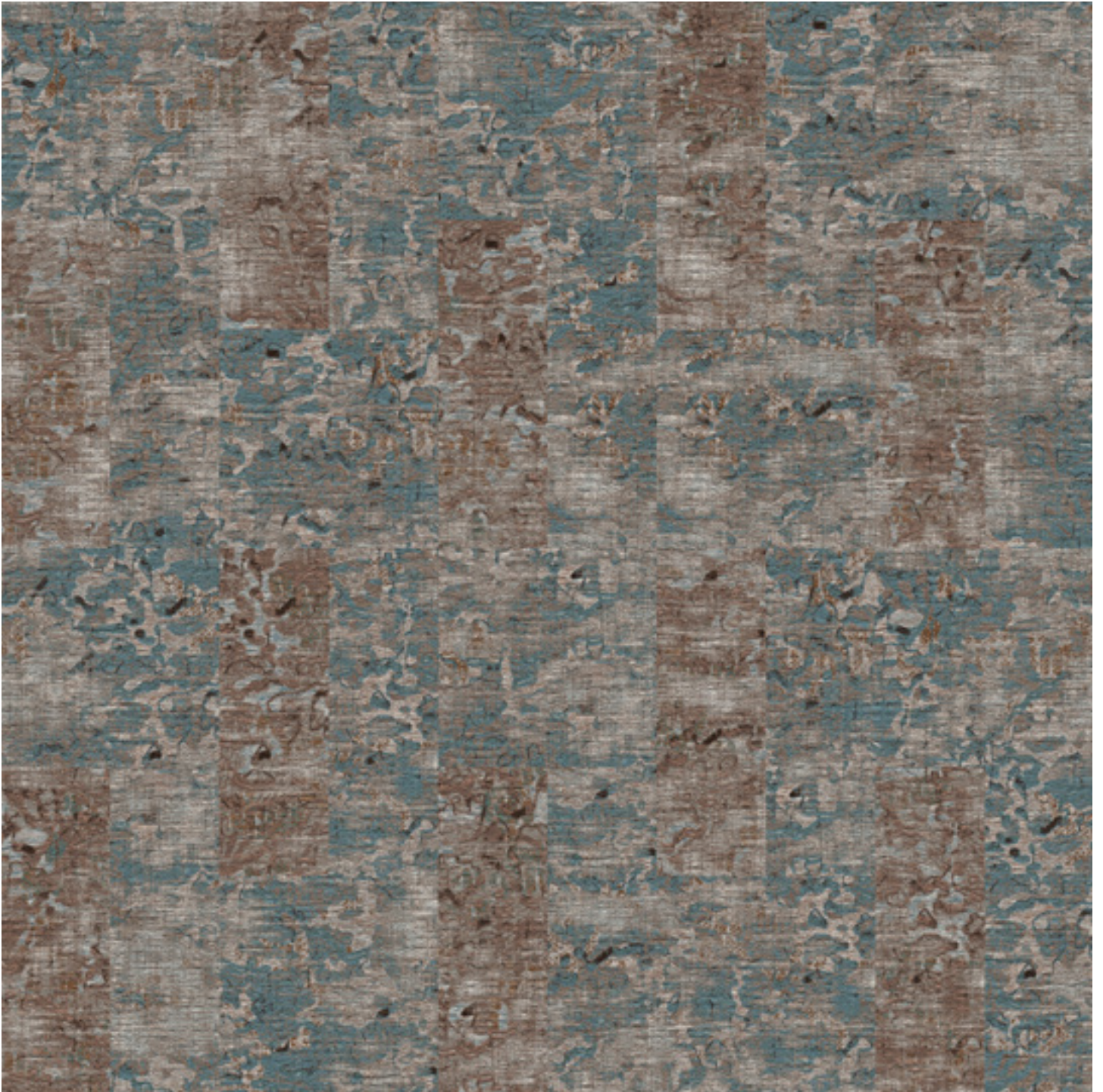
Available in 12" x36" and 24" x24"

Visit <https://www.mohawkgroup.com/durkan/pdi-tile>



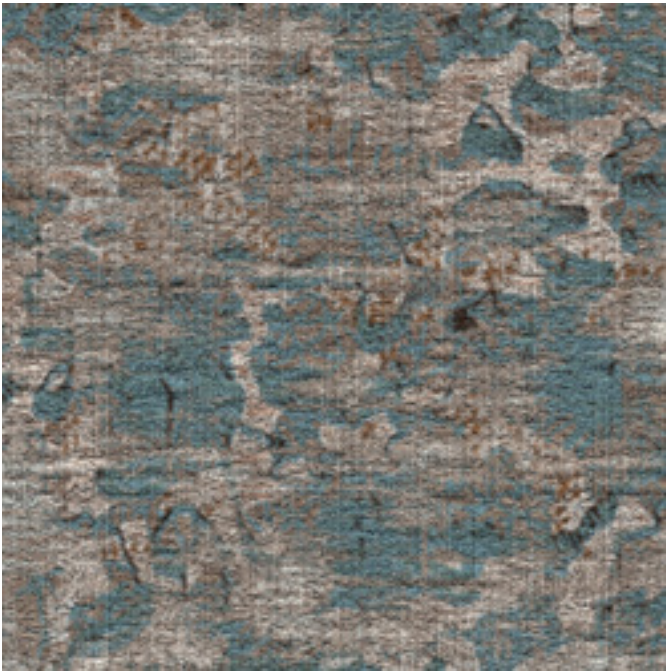
Right: CT71427, CT81312



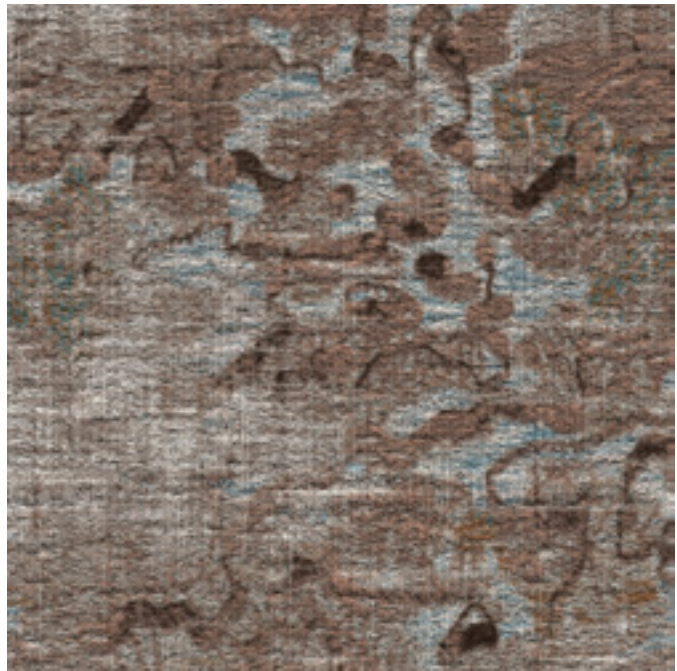


Monolithic Tile And Plank Combo

Featured on Beach Breaker Synthesis base.



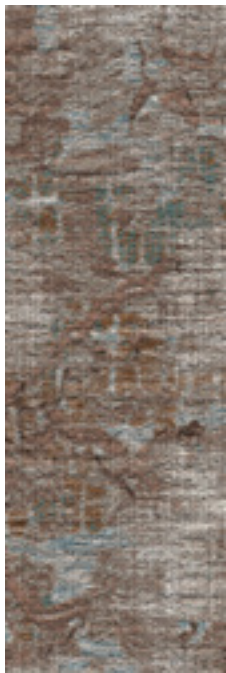
CT71427
24" X 24" PDI Tile



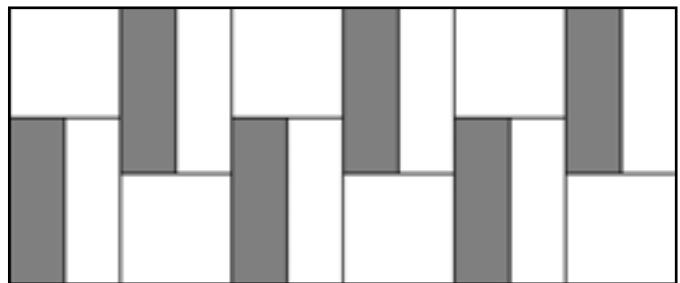
CT81312
24" X 24" PDI Tile



CT71427
12" X 36" PDI Plank



CT81312
12" X 36" PDI Plank



 CT71427 TILE  CT71427 PLANK  CT81312 PLANK



CT71427
12" X 36" PDI Plank (shown above)
24" X 24" PDI Tile

D81335
PDI Broadloom
72" (w) X 72" (l)





CT81312
12" X 36" PDI Plank (shown above)
24" X 24" PDI Tile

D81336
PDI Broadloom
72" (w) X 72" (l)



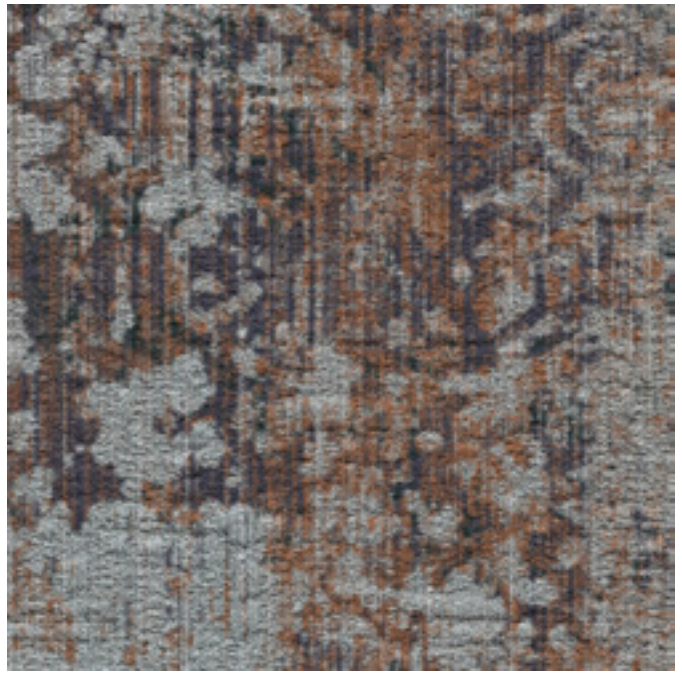


Ashlar Stepping Tile And Plank Combo

Featured on Beach Breaker Synthesis base.



CT71441
24" X 24" PDI Tile



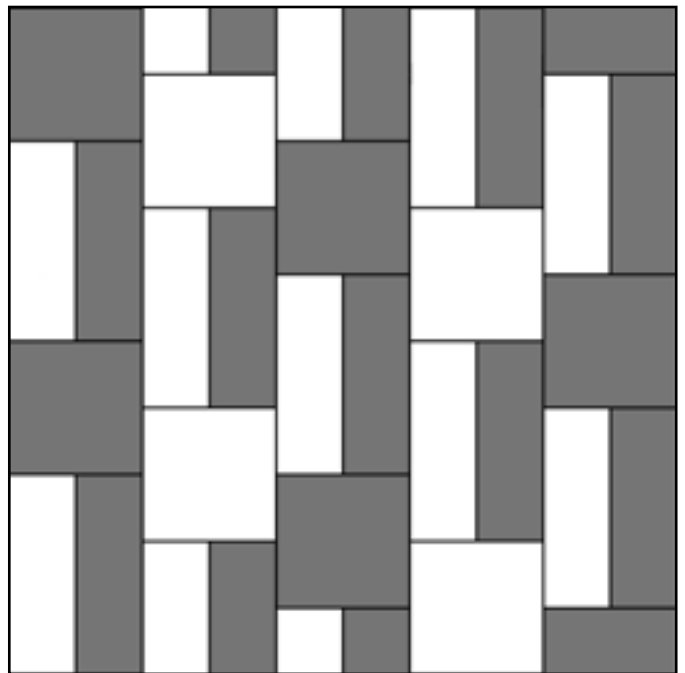
CT71442
24" X 24" PDI Tile



CT71441
12" X 36" PDI Plank



CT71442
12" X 36" PDI Plank

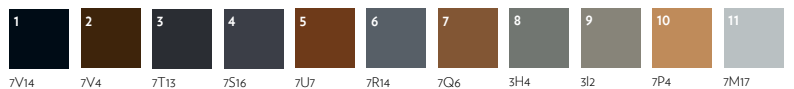


■ CT71442 TILE ■ CT71442 PLANK □ CT71441 PLANK □ CT71441 TILE



CT71441
12" X 36" PDI Plank (shown above)
24" X 24" PDI Tile

D81330
PDI Broadloom
72" (w) X 126" (l)

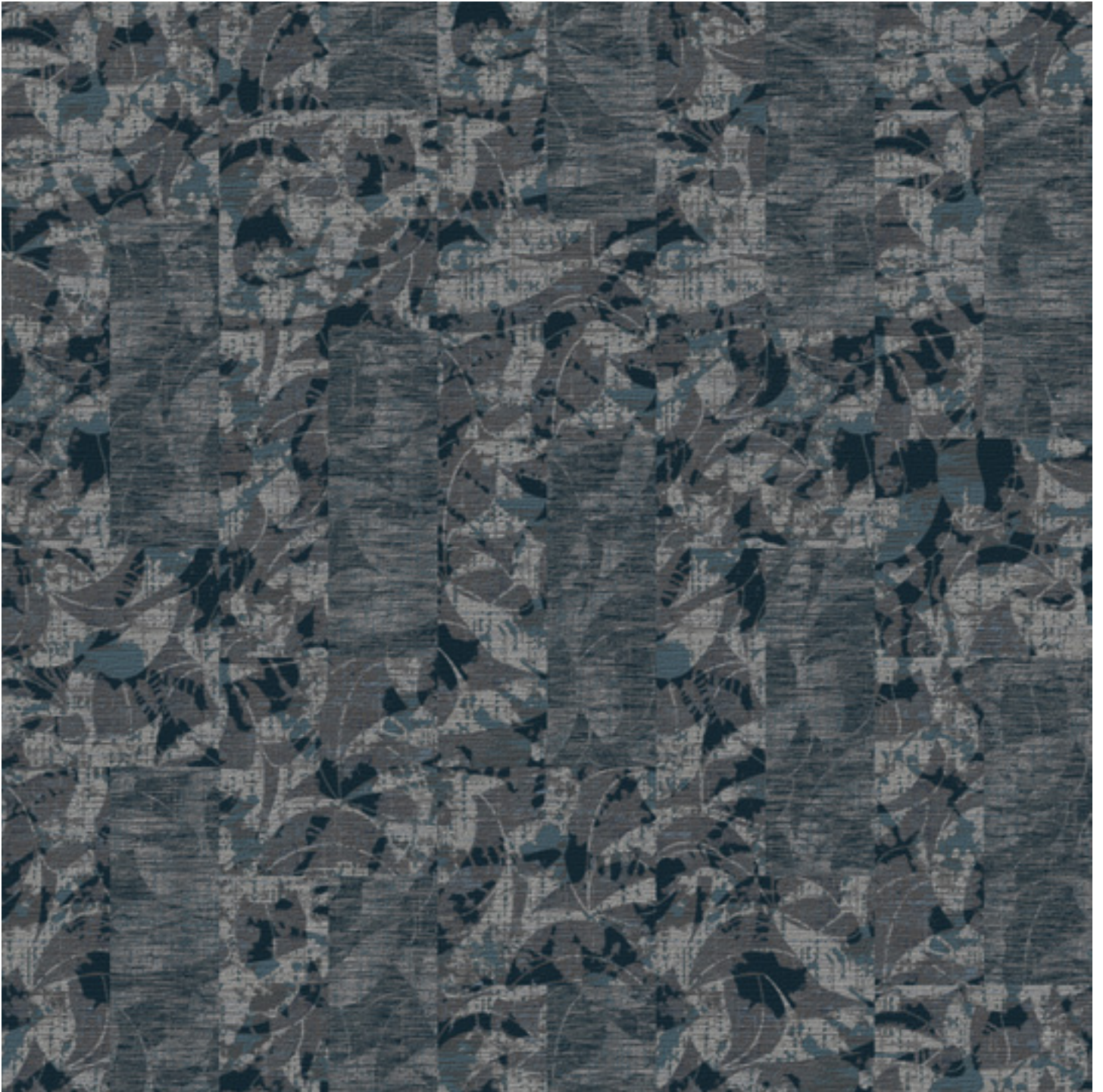




CT71442
12" X 36" PDI Plank (shown above)
24" X 24" PDI Tile

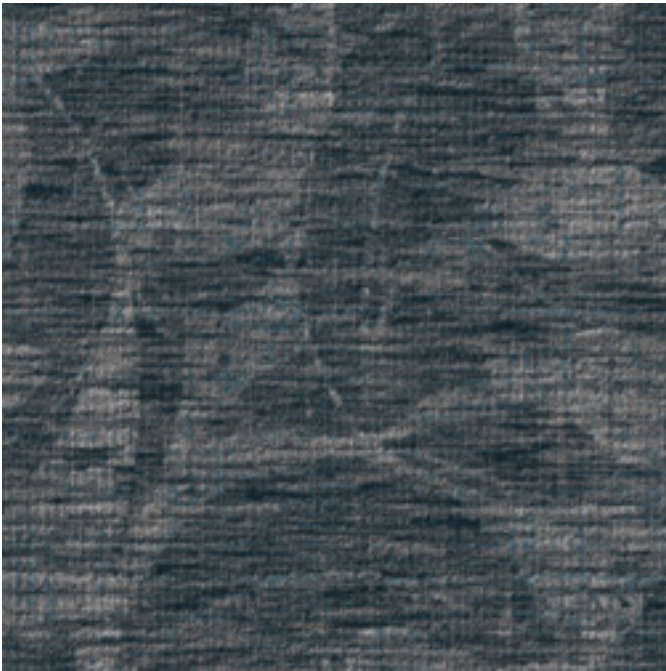
D81329
PDI Broadloom
72" (w) X 126" (l)





Ashlar Stepping Tile And Plank Combo

Featured on Second Wave Synthesis base.



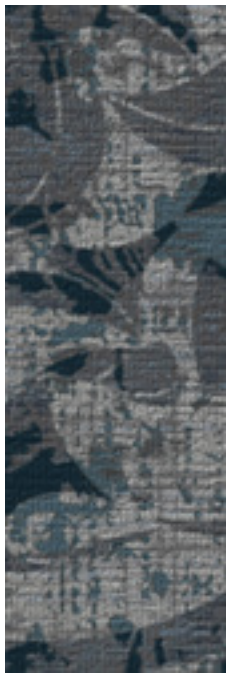
CT81317
24" X 24" PDI Tile



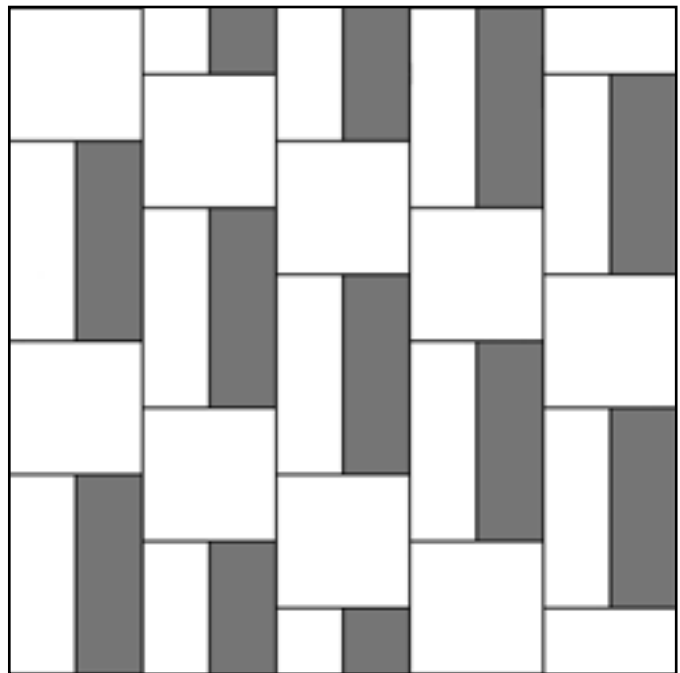
CT81318
24" X 24" PDI Tile



CT81317
12" X 36" PDI Plank



CT81318
12" X 36" PDI Plank

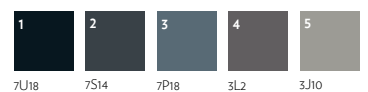


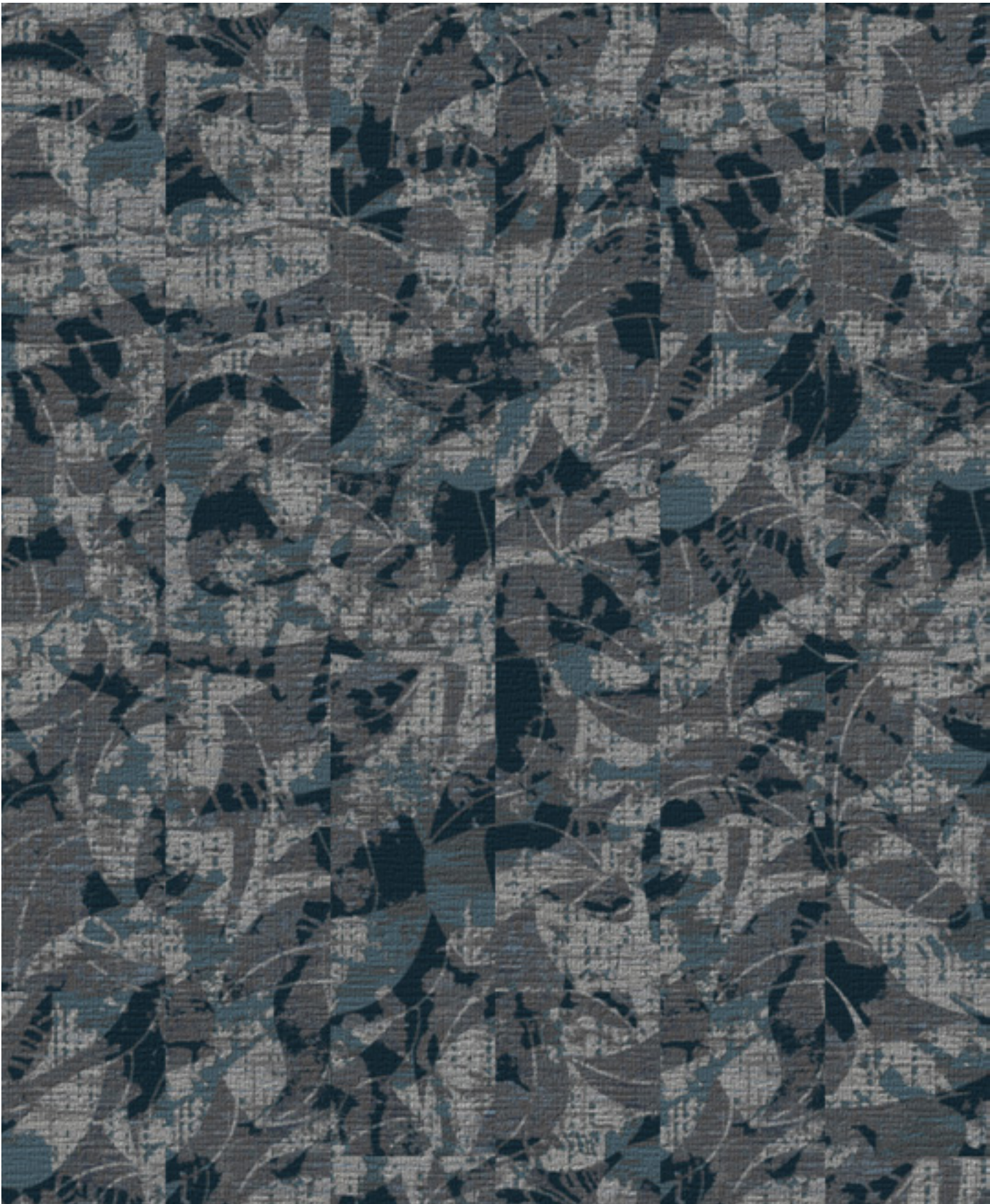
CT81318 TILE
 CT81317 PLANK
 CT81318 PLANK



CT81317
12" X 36" PDI Plank (shown above)
24" X 24" PDI Tile

D81341
PDI Broadloom
72" (w) X 72" (l)





CT81318
12" X 36" PDI Plank (shown above)
24" X 24" PDI Tile

D81342
PDI Broadloom
72" (w) X 72" (l)



Environmental Shifts Collection

CHLORAGUARD

Chloraguard is the ideal choice for innovative performance. By providing full treatment bleach protection for Precision Dye Injection (PDI) carpeting, Mohawk Group's Chloraguard technology allows printed carpets to be used where previously only solution-dyed fiber would meet specifications. Chloraguard offers contract designers the color and pattern flexibility of printed carpeting and the peace of mind of knowing their client's soft flooring is protected.

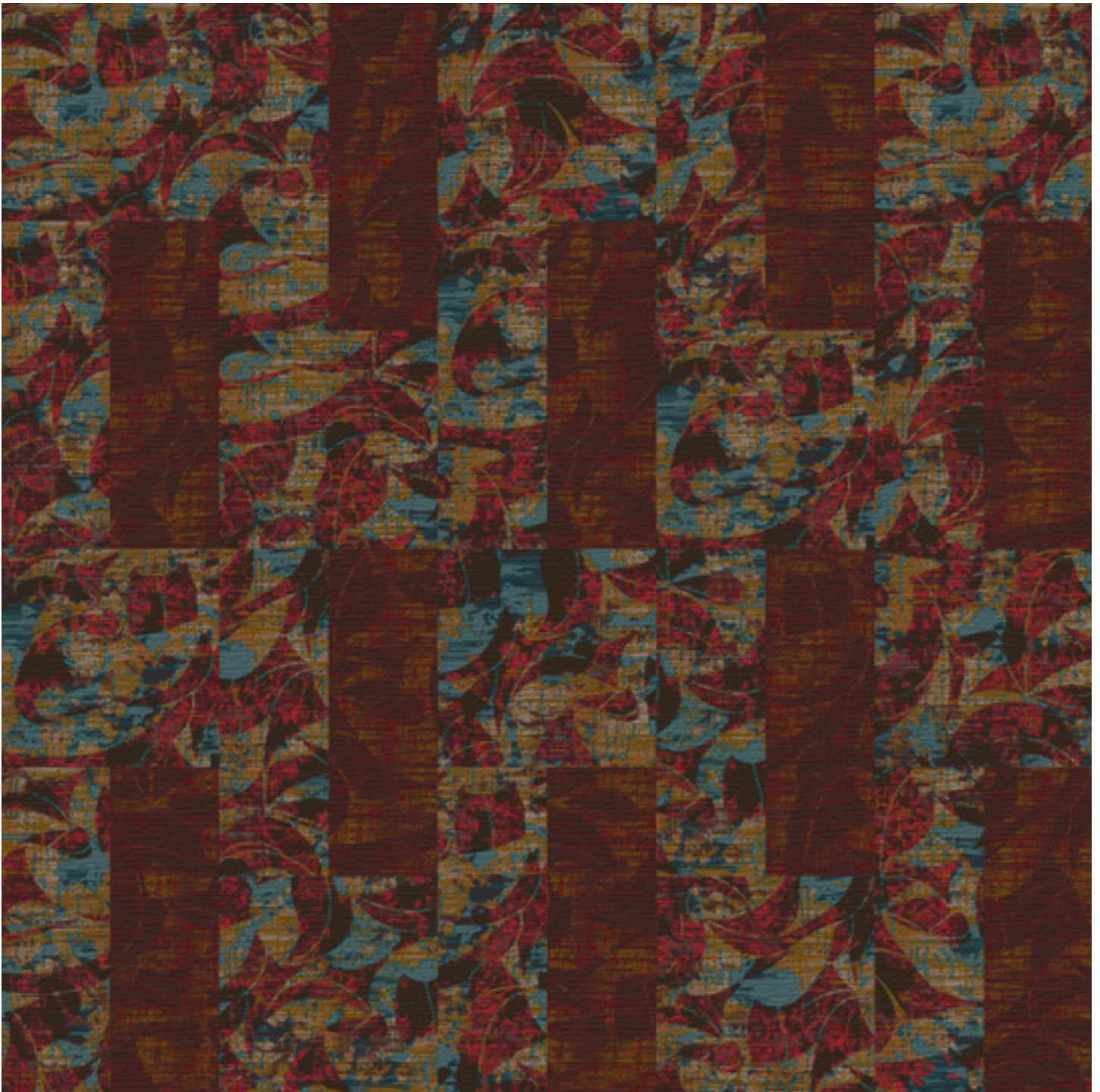
- Advanced bleach resistance for printed carpeting
- Exceptional stain protection
- Peace of mind against accidental spills
- Resistance of up to 10% solution of standard bleach
- Industry-leading 15-year warranty*

* Please refer to Mohawk Group and Durkan warranty guidelines for additional information.

Right: CT71455, CT71456, Accents III 7214 (stair)





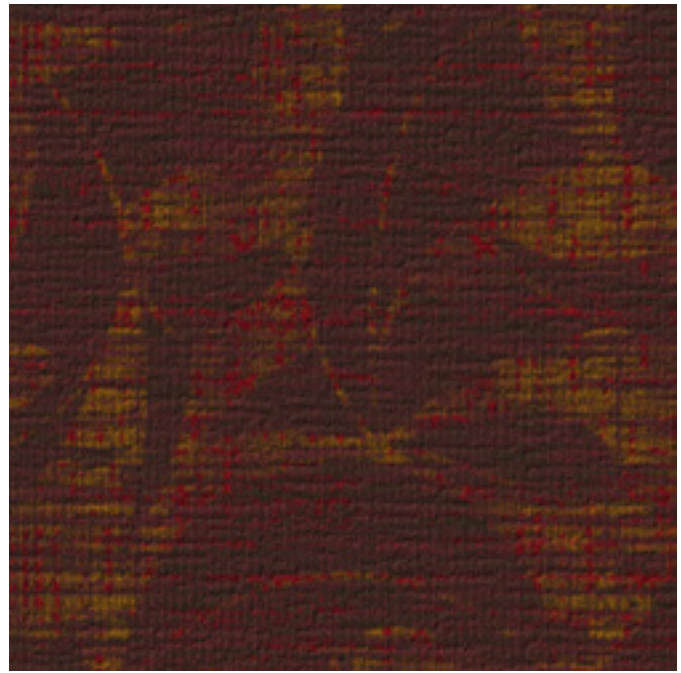


Monolithic Tile And Plank Combo

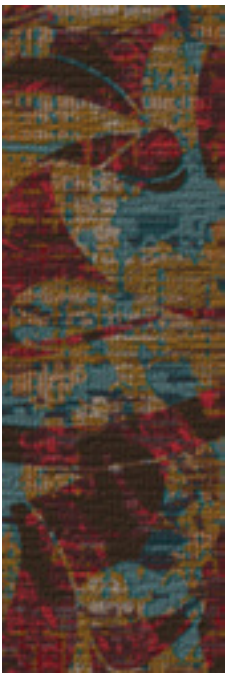
Featured on Second Wave Synthesis base.



CT71455
24" X 24" PDI Tile



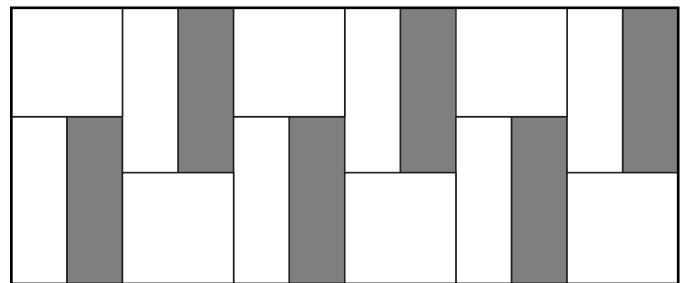
CT71456
24" X 24" PDI Tile



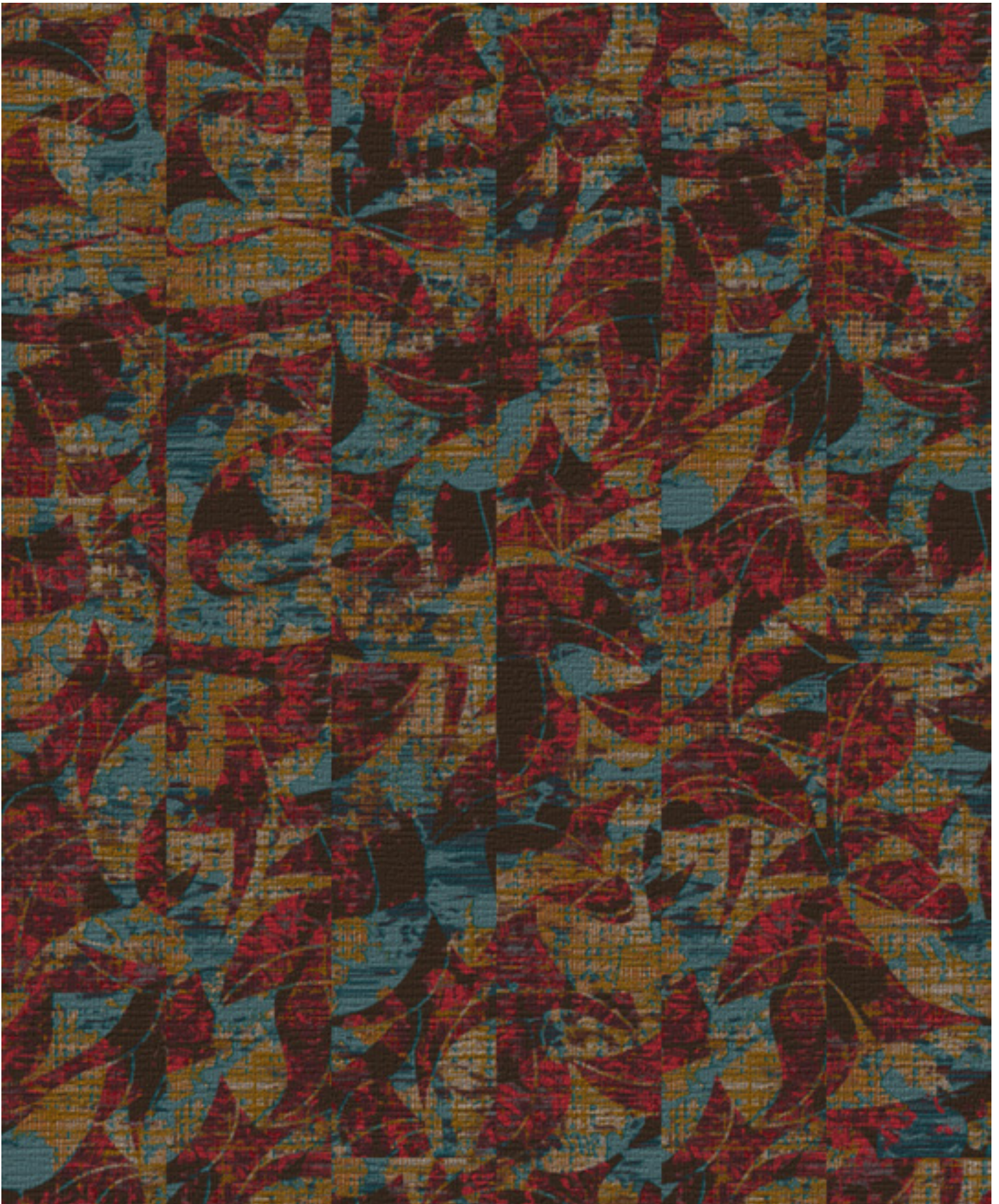
CT71455
12" X 36" PDI Plank



CT71456
12" X 36" PDI Plank



CT71455 TILE CT71456 PLANK CT71455 PLANK



CT71455
12" X 36" PDI Plank (shown above)
24" X 24" PDI Tile

D81328
PDI Broadloom
72" (w) X 72" (l)





CT71456
12" X 36" PDI Plank (shown above)
24" X 24" PDI Tile

D81327
PDI Broadloom
72" (w) X 72" (l)





Ashlar Stepping Tile And Plank Combo

Featured on Second Wave Synthesis base.



CT81313
24" X 24" PDI Tile



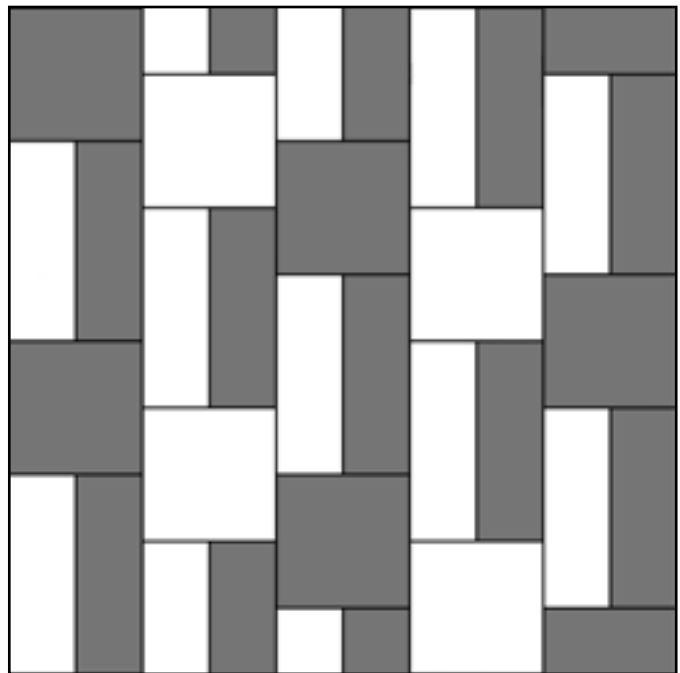
CT81314
24" X 24" PDI Tile



CT81313
12" X 36" PDI Plank



CT81314
12" X 36" PDI Plank

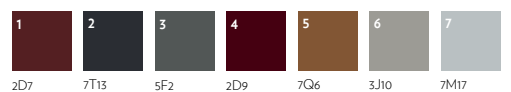


■ CT81313 TILE ■ CT81313 PLANK □ CT81314 PLANK □ CT81314 TILE



CT81313
12" X 36" PDI Plank (shown above)
24" X 24" PDI Tile

D81337
PDI Broadloom
72" (w) X 126" (l)

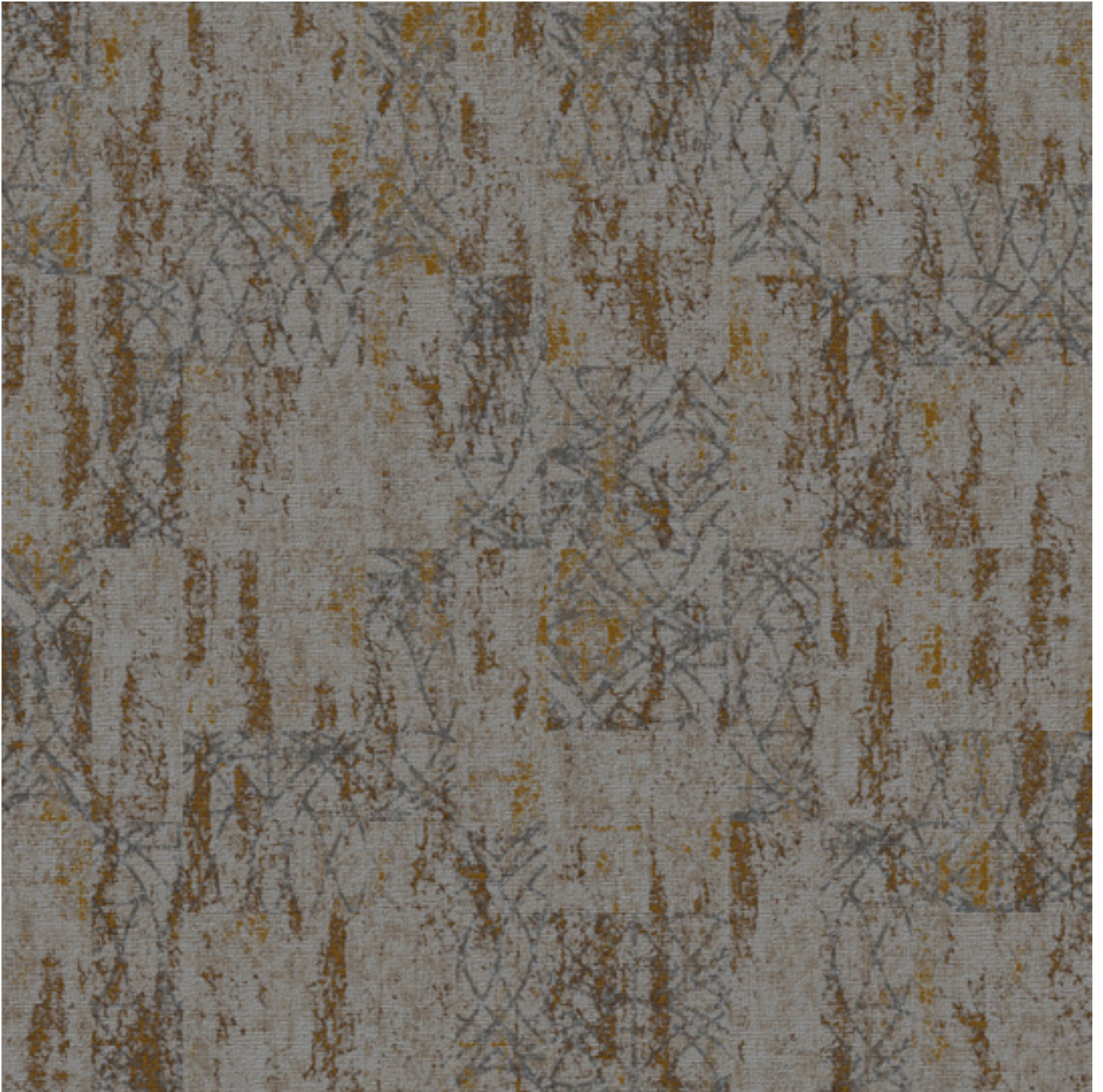




CT81314
12" X 36" PDI Plank (shown above)
24" X 24" PDI Tile

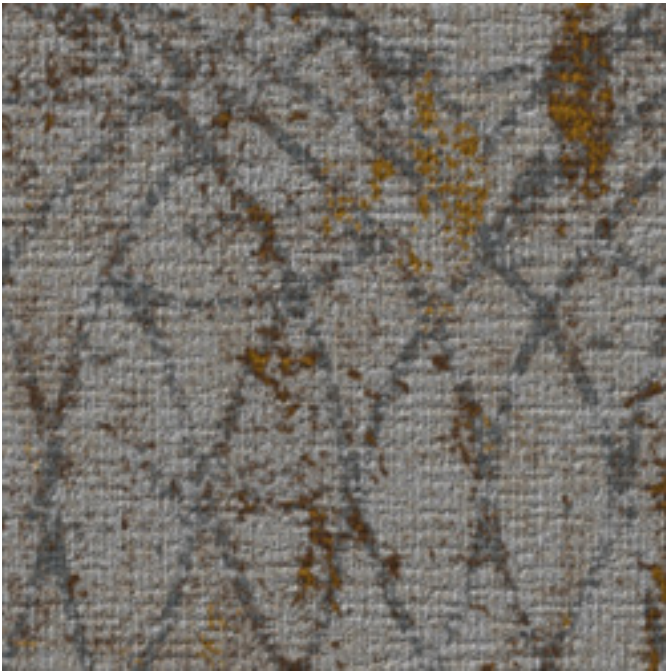
D81338
PDI Broadloom
72" (w) X 126" (l)





Monolithic Tile And Plank Combo

Featured on Second Wave Synthesis base.



CT71447
24" X 24" PDI Tile



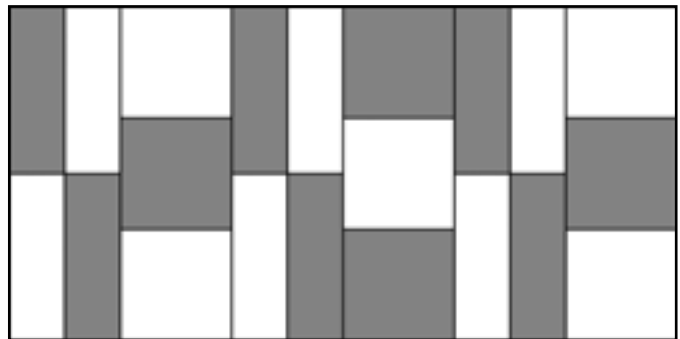
CT71448
24" X 24" PDI Tile



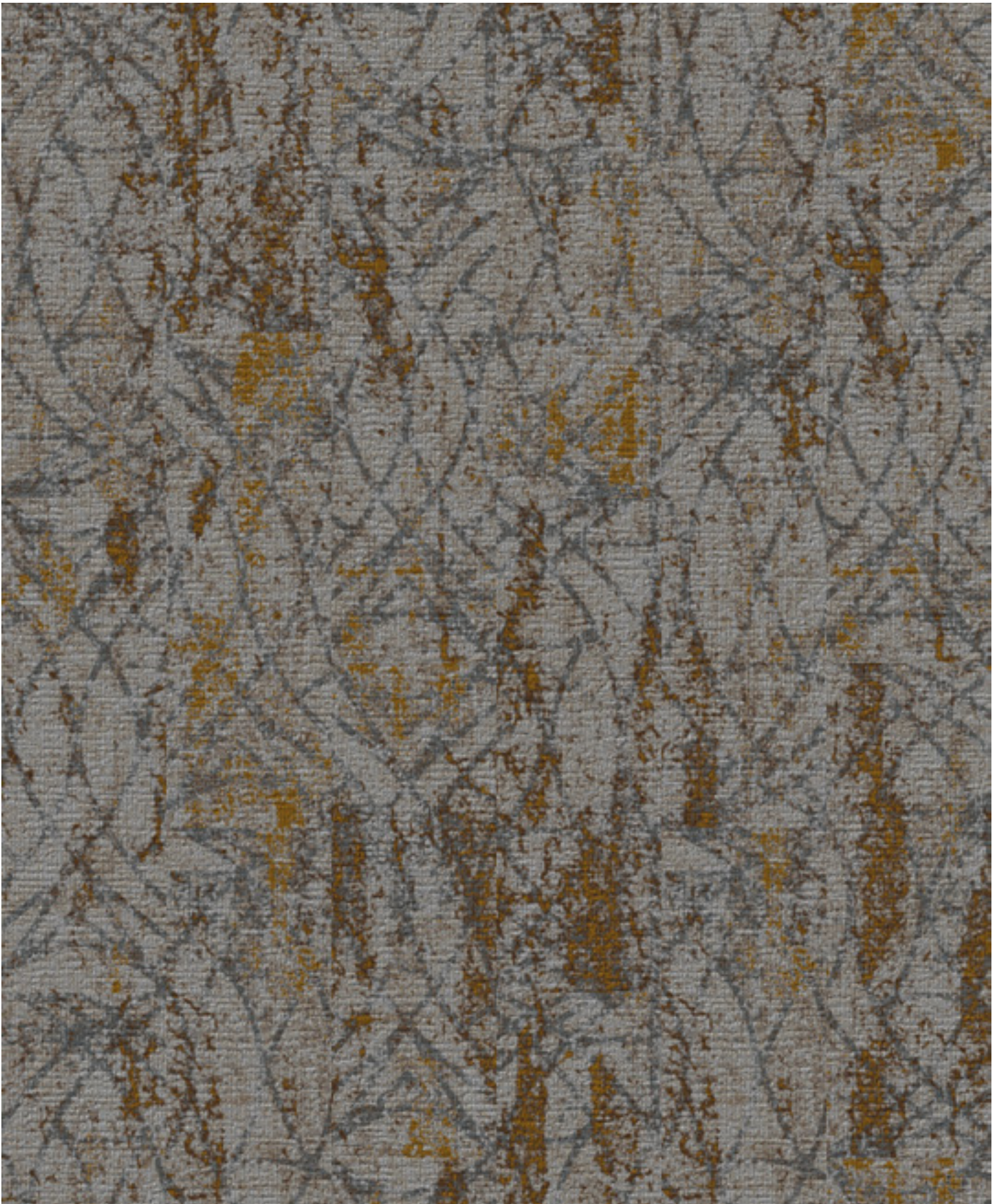
CT71447
12" X 36" PDI Plank



CT71448
12" X 36" PDI Plank

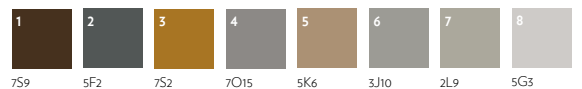


■ CT71447 TILE ■ CT71447 PLANK □ CT71448 PLANK □ CT71448 TILE



CT71447
12" X 36" PDI Plank (shown above)
24" X 24" PDI Tile

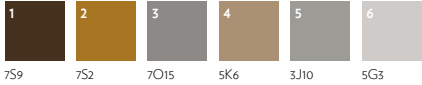
D81331
PDI Broadloom
72" (w) X 72" (l)





CT71448
12" X 36" PDI Plank (shown above)
24" X 24" PDI Tile

D81332
PDI Broadloom
72" (w) X 72" (l)



Program Details

PRECISION DYE INJECTION (PDI)

Set your imagination free with our new PDI tile program. Designs that can transform any space into an interchangeable design landscape. Durkan's state-of-the-art Precision Dye Injection (PDI) technology for carpet tile combines the best of both worlds: high resolution pattern design and customization with up to 12 colors and the added wear and maintenance advantages of modular flooring. PDI tile allows you to create enduring pattern combinations and easy-to-install formats while increasing longevity with selective replacement of individual damaged tiles instead of the entire floor.

Available in 12"x36" and 24"x24"

Visit: <https://www.mohawkgroup.com/durkan/pdi-tile>

RUNNING LINE BASE OPTIONS

- Bases:
 - Shaka – 20oz Synthesis base
 - Beach Breaker – 36oz Synthesis base
 - Second Wave – 36oz Synthesis base
- Sizes: 24"x24", 12"x36"
- Lead Time: 5 weeks
- Yarn: Colorstrand
- Backing: EcoFlex NXT or EcoFlex Air
- Square Yard Minimum: 133

CUSTOM BASE OPTIONS

- Bases: Any active Synthesis base
- Sizes: 24"x24", 12"x36"
- Lead Time: 10 weeks
- Yarn: Colorstrand
- Backing: EcoFlex NXT or EcoFlex Air
- Square Yard Minimum: 1500

OVERAGES

- 133 SY to 1499 SY = 10%
- 1499 SY to 4999 SY = 5%
- 5000+ SY = 3%

CHLORAGUARD

Chloraguard is the ideal choice for innovative performance. By providing full treatment bleach protection for Precision Dye Injection (PDI) carpeting, Mohawk Group’s Chloraguard technology allows printed carpets to be used where previously only solution-dyed fiber would meet specifications. Chloraguard offers contract designers the color and pattern flexibility of printed carpeting and the peace of mind of knowing their client’s soft flooring is protected.

Brochure: https://mohawk.blob.core.windows.net/mohawkgroup/pdfs/MG_Chloraguard_Brochure.pdf

THE RICHNESS OF SYNTHESIS

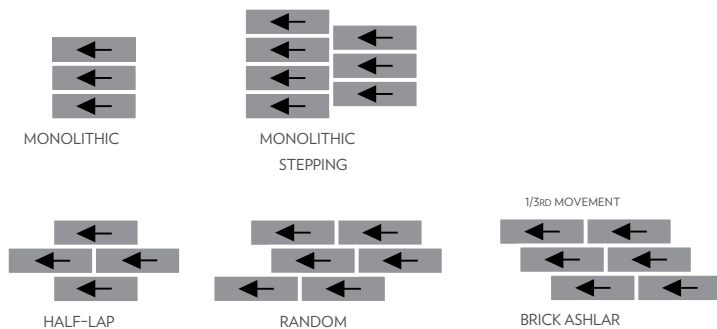
Synthesis is a patented carpet technology from Durkan that lets designers combine texture and pattern to create a unique layering effect within broadloom and carpet tile, bringing tremendous depth and richness to design. Choose a custom base and combine with a precision dye injection (PDI) design from Durkan’s vast library of thousands of patterns. Contact your Durkan rep to learn more.

Visit: <https://www.mohawkgroup.com/durkan/synthesis>

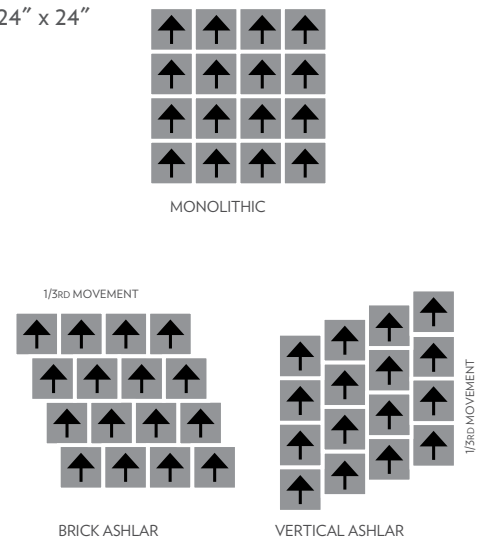
INSTALL METHODS

All tiles must run in the same pile direction with arrows on the back facing the same direction.

12" x 36"



24" x 24"



The Environmental Shifts collection is a versatile and dynamic set of PDI tile designs that can transform any space into an interchangeable design landscape. Bold, sweeping hospitality designs are partnered with the convenience of tile in an array of patterns that can be installed to create a one of a kind installation.

Please contact your rep or visit www.durkan.com for more information.

0275_Mar/2020



DURKAN. IMAGINE THAT.
508 East Morris Street, Dalton, GA 30721
(800) 241-4580 | Durkan.com

A division of Mohawk Group

DEFINITY | SYNTHESIS | PDI | CYP | TUFTED | CARPET TILE
ERT | RUBBER | SHEET | LAMINATE | HARDWOOD | RUGS

