

# Circular Nature Collection

Gentle Waters, Grounded Earth







Cover: Gentle Waters, 646 Dew Point  
Grounded Earth, 831 Braided Stream





## Aladdin Commercial is dedicated to sustainability and innovation

By utilizing the most innovative materials and processes, Aladdin Commercial offers comprehensive flooring solutions that are created specifically for commercial interiors.

### FIBER

#### EnviroStrand™ SD

EnviroStrand™ solution-dyed fiber aligns Aladdin Commercial's leadership in sustainability and design. Aladdin utilizes a patented process that enhances the strength of the yarn while incorporating a multi-step purification process ensuring the carpet resists dirt, grime and contaminants.

- Constructed with our patented technology, providing the ultimate innovation in PET carpet
- Through our patented process, Mohawk recycles 6.2 billion PET bottles every year. If placed end to end, these bottles would circle the earth 31.4 times
- Contains an average of 74% total recycled content

### BACKING

#### UltraSet® Matrix

Aladdin Commercial continues its dedication to sustainable solutions with UltraSet® Matrix, the next generation in carpet tile backing. Using advanced materials and engineering, UltraSet® Matrix lowers environmental impact without sacrificing performance:

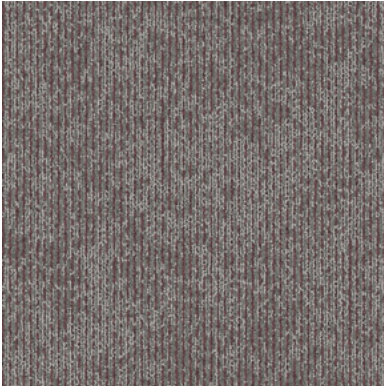
- Greatly reduces subfloor moisture concerns and saves money on mitigation
- Worry-free installation with no visible moisture present using our FlexLok Tab System
- Contains a minimum of 40% pre-consumer recycled content based on total product weight\*

\*Recycled Content Claim third party verified by UL (Underwriters Laboratory)

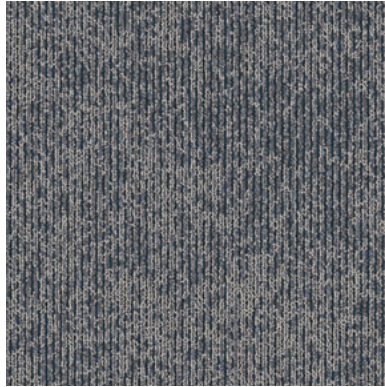


## Gentle Waters Colorways

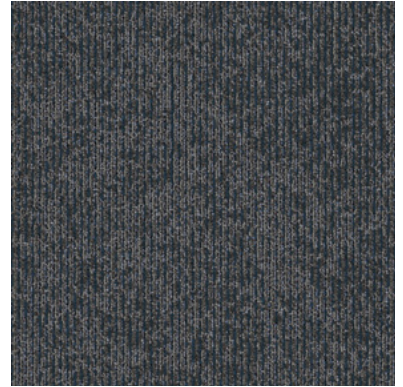
---



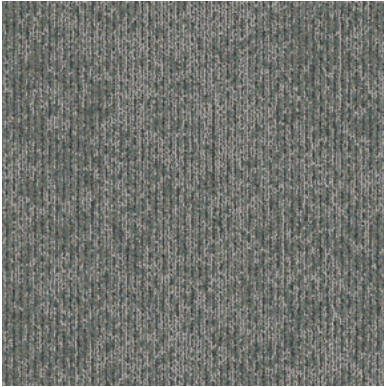
334 Albedo



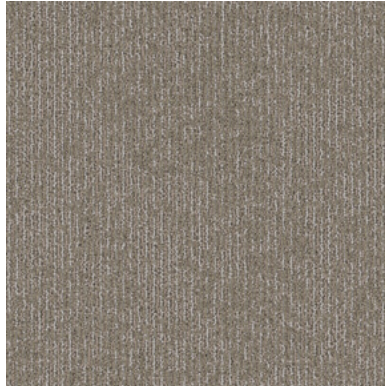
535 Water Balance



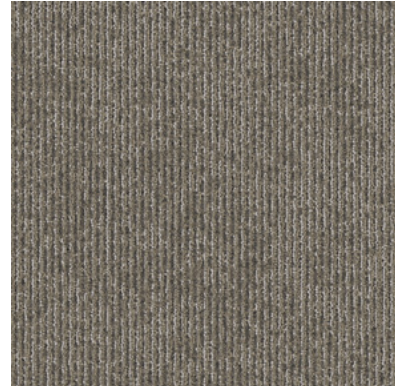
559 Snow Pack



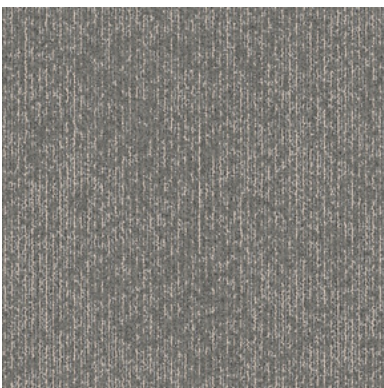
646 Dew Point



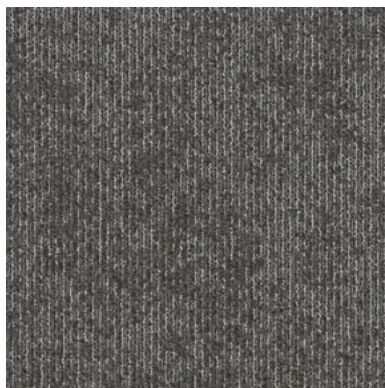
831 Braided Stream



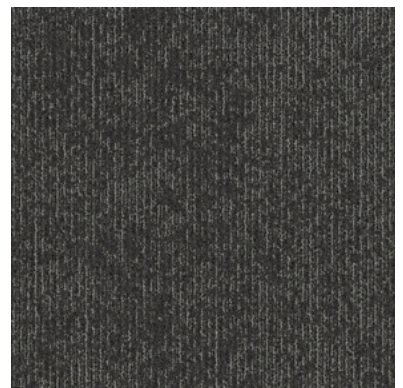
858 Base Flow



927 Snow Melt



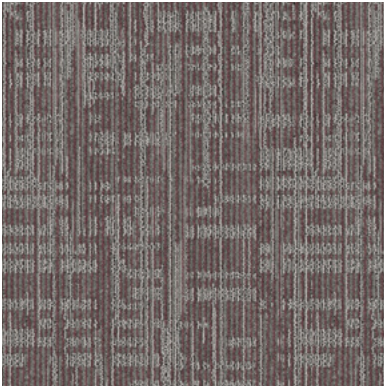
949 Tidal Drift



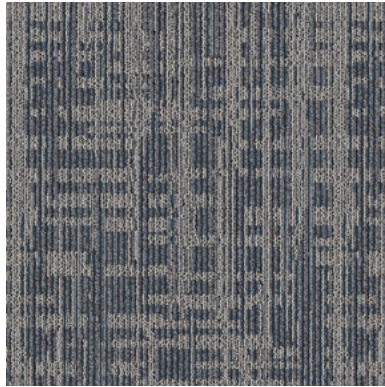
989 Rain Shadow



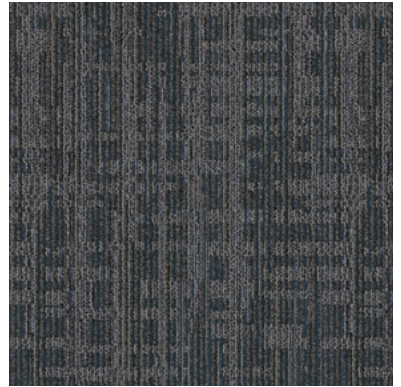
# Grounded Earth Colorways



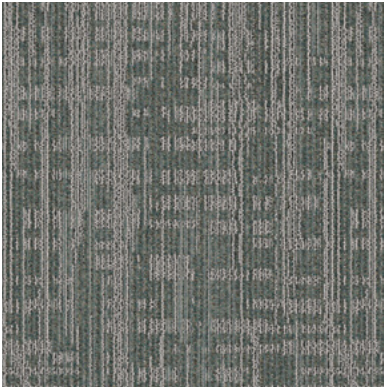
334 Albedo



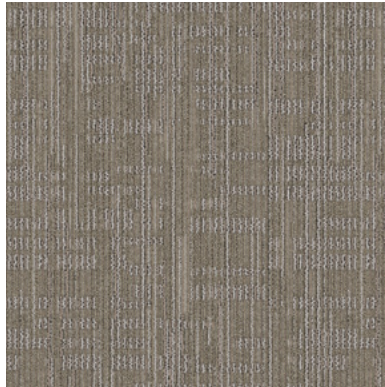
535 Water Balance



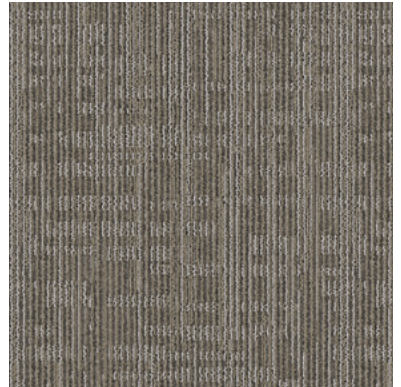
559 Snow Pack



646 Dew Point



831 Braided Stream



858 Base Flow



927 Snow Melt



949 Tidal Drift



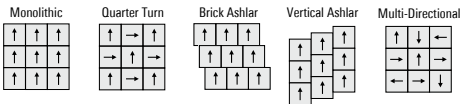
989 Rain Shadow

# Specifications

ALADDIN COMMERCIAL MODULAR	Brand .....	<b>Aladdin Commercial</b>
	Collection .....	<b>Circular Nature Collection</b>
	Style Name / Number .....	<b>Gentle Waters / 2B225</b>
	Construction .....	Tufted
	Surface Appearance .....	Patterned Loop
	Gauge .....	1/12 (47.00 rows per 10cm)
	Density .....	6,480
	Dye Method .....	100% Solution Dyed
	Fiber Type .....	EnviroStrand® SD PET
	Stain Release Technology .....	Mohawk Protection Plus Stain
Soil Release Technology .....	Mohawk Protection Plus Soil	
Primary Backing .....	Non Woven Synthetic	
Secondary Backing .....	UltraSet® Matrix	
Indoor Air Quality .....	Green Label Plus Certified # 1171	
NSF 140 .....	Gold	
Size .....	24" x 24" (.6096 m x .6096 m)	
Installation Method .....	Quarter Turn / Brick Ashlar Vertical Ashlar / Multi-Directional	
Flammability .....	ASTM E 648 Class 1 (Glue Down)	
Smoke Density .....	ASTM E 662 Less than 450	
Static Propensity .....	AATCC-134 Under 3.5 KV	
Warranties .....	10 Year Limited Wear Warranty 10 Year Limited Static Protection Warranty 10 Year Limited Edge Ravel, Zippering, Delamination, and Dimensional Stability Warranty 10 Year Limited Colorfastness to Light Warranty 10 Year Limited Stain Resistance Warranty 10 Year Limited Colorfastness to Atmospheric Contaminants	

ALADDIN COMMERCIAL MODULAR	Brand .....	<b>Aladdin Commercial</b>
	Collection .....	<b>Circular Nature Collection</b>
	Style Name / Number .....	<b>Grounded Earth / 2B226</b>
	Construction .....	Tufted
	Surface Appearance .....	Pattern Loop
	Gauge .....	1/12 (47.00 rows per 10cm)
	Density .....	5,891
	Dye Method .....	100% Solution Dyed
	Fiber Type .....	EnviroStrand® SD PET
	Stain Release Technology .....	Mohawk Protection Plus Stain
Soil Release Technology .....	Mohawk Protection Plus Soil	
Primary Backing .....	Non Woven Synthetic	
Secondary Backing .....	UltraSet® Matrix	
Indoor Air Quality .....	Green Label Plus Certified # 1171	
NSF 140 .....	Gold	
Size .....	24" x 24" (.6096 m x .6096 m)	
Installation Method .....	Quarter Turn / Brick Ashlar Vertical Ashlar / Multi-Directional	
Flammability .....	ASTM E 648 Class 1 (Glue Down)	
Smoke Density .....	ASTM E 662 Less than 450	
Static Propensity .....	AATCC-134 Under 3.5 KV	
Warranties .....	10 Year Limited Wear Warranty 10 Year Limited Static Protection Warranty 10 Year Limited Edge Ravel, Zippering, Delamination, and Dimensional Stability Warranty 10 Year Limited Colorfastness to Light Warranty 10 Year Limited Stain Resistance Warranty 10 Year Limited Colorfastness to Atmospheric Contaminants	

Installation Instructions:



Mohawk Industries, Inc. warrants its adhesives for the life of the original installation only when a Mohawk Industries style (product) is installed. Mohawk's floor preparation procedures must be followed to ensure that the substrate has been prepared properly. The use of Mohawk branded adhesives is required to ensure optimum results and are the only approved adhesives warranted by Mohawk. Please contact your local Sales Representative for installation guidelines.

Mohawk is providing this architect folder for the purpose of promoting our commercial business. Color may vary from dye lot to dye lot. Substitution of material may be made due to improved technology, supply limitations or other factors. The performance of this product is not affected by such variations. We recommend the use of chair pads on all commercial installations.

These patterns contain inherent characteristics which may result in pattern run off and/or pattern appearance variations at the seams or tile edges (darker or lighter pattern lines). These characteristics are inherent in the patterns and are not manufacturing defects. Consideration to these characteristics should be given when selecting an installation method.

For current and complete specifications please call tech support at 888-387-9881 or visit [www.AladdinCommercial.com](http://www.AladdinCommercial.com) | 800.233.4490

0183C\_Dec/2024

