

Bentwood Tile Collection











Bentwood Tile Collection

The Bentwood Tile Collection by Aladdin Commercial offers 18" x 36" LVT tiles designed for commercial interior spaces. This collection is a great choice for various commercial applications, as it features concrete and metallic inspired visuals and is available in two different thickness options. This variety allows for greater flexibility in project budgets and provides more choices for creating seamless transitions between hard and soft surface flooring and coordinating with other products in any space.

Features

- 2.5 mm and 5.0 mm overall thicknesses
- 18" x 36" tiles
- 20 mil wear layer
- 5.0 thickness can be installed with a loose-lay method. Larger areas require only a perimeter spread of releasable adhesive.
- 2.5 can be installed with releasable adhesive.
- Enhanced Urethane Finish
- FloorScore® Certified
- 10 Year Light Limited Commercial Warranty
- 25 Year Limited Residential Warranty



269 Coal



832 Clay



838 York



848 River Stone



859 Fossil



925 Concrete



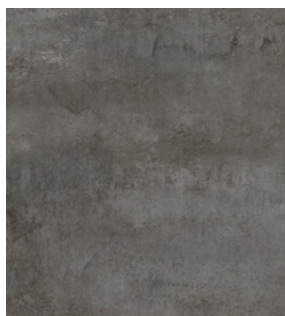
929 Silver



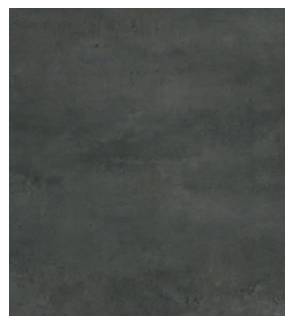
938 Quartz



949 Granite



959 Diamond



969 Onyx

Specifications

LVT	Brand	Aladdin Commercial
	Collection	Bentwood Tile
	Style Name / Number	Bentwood Tile 2.5 / AH130
	Product Type	Luxury Vinyl Tile
	Total Thickness.....	2.5 mm
	Wear Layer.....	20 mil (0.5 mm)
	Finish.....	Enhanced Urethane
	Colors Available.....	11
	Size	18" x 36"
	Packaging	12 pcs/ctn
	Sf/Carton	54
	Cartons/Pallet.....	52
	Weight / Carton	743.4 oz (46.46 lbs)
	Surface Profile.....	Embossed
	Edge Profile	Squared
	Classification	(ASTM F1700) Type B - Embossed
	Squareness.....	(ASTM F 2421) ±0.10" max
	Size and Tolerance.....	(ASTM F2421) Passes
	Thickness.....	(ASTM F386) ±0.005"
	Flexibility	(ASTM F137) Passes
	Dimensional Stability.....	(ASTM F2199) Passes
	Static Load Limit.....	(ASTM F970) 1000 psi
	Residual Indentation.....	(ASTM F1914) Passes
	Resistance to Chemicals.....	(ASTM F925) Passes
	Resistance to Light.....	(ASTM F1515) Passes
Resistance to Heat.....	(ASTM F1514) Passes	
Critical Radiant Flux.....	(ASTM E648) Class 1	
Smoke Density	(ASTM E662) <450	
Installation Method	Glue Down	
Adhesive.....	M95 RSA, MS 160 Spray or M700 PSA	
Certification	FloorScore® Certified	
Warranty	Limited 10 Year Commercial Warranty Limited 25 Year Residential Warranty	

LVT	Brand	Aladdin Commercial
	Collection	Bentwood Tile
	Style Name / Number	Bentwood Tile 5.0 / AH131
	Product Type	Luxury Vinyl Tile
	Total Thickness.....	5.0 mm
	Wear Layer.....	20 mil (0.8 mm)
	Finish.....	Enhanced Urethane
	Colors Available.....	11
	Size	18" x 36"
	Packaging	6 pcs/ctn
	Sf/Carton	27
	Cartons/Pallet.....	46
	Weight / Carton	749.76 oz (46.86 lbs)
	Surface Profile.....	Embossed
	Edge Profile	Squared
	Classification	(ASTM F1700) Type B - Embossed
	Squareness.....	(ASTM F 2421) ±0.10" max
	Size and Tolerance.....	(ASTM F2421) Passes
	Thickness.....	(ASTM F386) ±0.005"
	Flexibility	(ASTM F137) Passes
	Dimensional Stability.....	(ASTM F2199) Passes
	Static Load Limit.....	(ASTM F970) 1000 psi
	Residual Indentation.....	(ASTM F1914) Passes
	Resistance to Chemicals.....	(ASTM F925) Passes
	Resistance to Light.....	(ASTM F1515) Passes
Resistance To Heat.....	(ASTM F1514) Passes	
Critical Radiant Flux.....	(ASTM E648) Class 1	
Smoke Density	(ASTM E662) <450	
Installation Method.....	Loose Lay	
Adhesive.....	M95 RSA, MS 160 Spray or M700 PSA	
Certification	FloorScore® Certified	
Warranty	Limited 10 Year Commercial Warranty Limited 25 Year Residential Warranty	

Aladdin[™]
COMMERCIAL

Mohawk Industries, Inc. warrants its adhesives for the life of the original installation only when a Mohawk Industries style (product) is installed. Mohawk's floor preparation procedures must be followed to ensure that the substrate has been prepared properly. The use of Mohawk branded adhesives is required to ensure optimum results and are the only approved adhesives warranted by Mohawk. Please contact your local Sales Representative for installation guidelines.

Mohawk is providing this architect folder for the purpose of promoting our commercial business. Color may vary from dye lot to dye lot. Substitution of material may be made due to improved technology, supply limitations or other factors. The performance of this product is not affected by such variations. We recommend the use of chair pads on all commercial installations.

For current and complete specifications please call tech support at 888-387-9881 or visit www.AladdinCommercial.com | 800.233.4490

0192C_Dec/2024