



Key Elements

Columns II Unique Angle II



The Key Elements broadloom carpet collection was designed with tone-on-tone texture in various scales, with biophilic design in mind. The color range includes versatile neutrals in warm and cool hues to coordinate with any aesthetic. Key Elements combines our state-of-the-art Weldlok backing with ColorStrand fiber to deliver broadloom with lasting performance, cleanability, and sustainability.



FIBER TECHNOLOGY
Key Elements features ColorStrand 100% solution dyed nylon fiber, providing lasting beauty and value.



NET-POSITIVE IMPACT
All of our products are carbon neutral, plus an additional 5% for a net positive impact on the climate.



AREA RUG AVAILABILITY
All patterns and colors from Key Elements can be turned into area rugs. You can choose from a variety of edge treatments, shapes, and sizes, up to 12' W x 45' L.

Weldlok®

PERFORMANCE BACKING
Weldlok is Mohawk Group's standard commercial broadloom backing system. It can be enhanced with OnGuard or AIR to meet project demands for moisture barriers and/or attached cushions.

Declare.™

RED LIST FREE
Key Elements is certified Red List Free through Declare®.

ADDITIONAL FEATURES

- LEED, WELL & LBC Eligible
- CRI Green Label Plus
- NSF 140 Gold



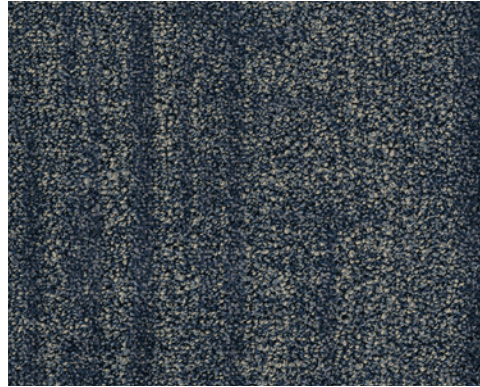
Columns II 948 Basin
Cover: Columns II 711 Baja



Colorways

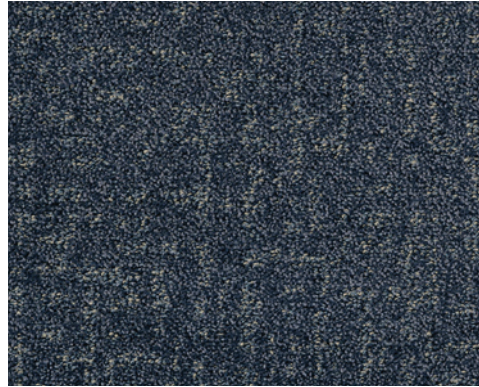
Columns II is a larger scale, simple linear design with rich texture. Unique Angle II is a small-scale crosshatch texture that adds dimension to any space.

Columns II



553 Perse

Unique Angle II



553 Perse

Colorways Shown in Unique Angle II



711 Baja



141 Wheaten



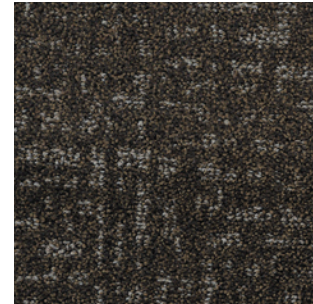
858 Melichrous



948 Basin



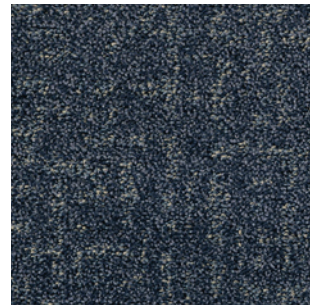
859 Brushed Metal



869 Brunneous



965 Stainless



553 Perse



Unique Angle II 553 Perse, Large and Local Reforestation 838 Cumberland



Specifications

Columns II (BC602)
Unique Angle II (BC603)

DESIGN

Width	12' (3.66 m)
Surface Appearance	Textured Patterned Cut & Loop
Fiber Type	ColorStrand® SD Nylon
Dye Method	Solution Dyed
Tufted Weight	32 oz/yd ² (1085 g/m ²)
Colors Available	
Columns II	8
Unique Angle II	8

PERFORMANCE

Construction	Tufted
Gauge	1/12" (47.00 rows per 10cm)
Stain Release Technology	EcoSentry Plus Stain Protection
Soil Release Technology	EcoSentry Soil Protection
Backing Material	Weldlok®
Flammability	ASTM E 648 - Class 1 (Glue Down)
Smoke Density	ASTM E 662 - Less than 450
Static Propensity	AATCC - 134 Under 3.5 KV

SUSTAINABILITY

Certification	Declare Red List Free
Indoor Air Quality	Green Label Plus Certified #8216
NSF 140	Gold
Carbon	Net Positive Carbon (Neutral +5%)

SERVICE

Warranties	Lifetime Limited Wear Warranty, Lifetime Limited Colorfastness to Light, 10 Year Limited Colorfastness to Atmospheric Contaminants, 10 Year Stain Warranty, Lifetime Static
------------	---



Unique Angle II 711 Baja

Mohawk Group warrants its adhesives for the life of the original installation only when a Mohawk Group style (product) is installed. Mohawk's floor preparation procedures must be followed to ensure that the substrate has been prepared properly. The use of Mohawk branded adhesives is required to ensure optimum results and are the only approved adhesives warranted by Mohawk.

These patterns contain inherent characteristics which may result in pattern run off and/or pattern appearance variations at the seams or tile edges (darker or lighter pattern lines). These characteristics are inherent in the patterns and are not manufacturing defects. Consideration to these characteristics should be given when selecting an installation method.

Chair pads are recommended under office chairs with roller casters to preserve appearance retention, act as a deterrent toward delamination and to prevent premature or accelerated wear. Walk-off tiles from the Tuff Stuff II Collection are recommended at entryways to reduce soiling.

Mohawk Group is providing this architect folder for the purpose of promoting our commercial business. This folder and its samples shall remain the property of Mohawk Group. Color may vary from dye lot to dye lot. Substitution of material may be made due to improved technology, supply limitations or other factors. The performance of this product is not affected by such variations.

For current and complete specifications please visit www.mohawkgroup.com



877-3RE-CYCL

Produced with recycled materials



Mohawk Group

Mohawk Group
160 South Industrial Blvd.
Calhoun, GA. 30701
800.554.6637
mohawkgroup.com

0024C_Mar/2024