

# RevWood Plus Collection

Balanced Artistry, Contemporary Craft, Dynamic Composition,  
Popular Commentary, Progressive Craft, Progressive Influence





Progressive Influence 869  
Cover: Balanced Artistry 853







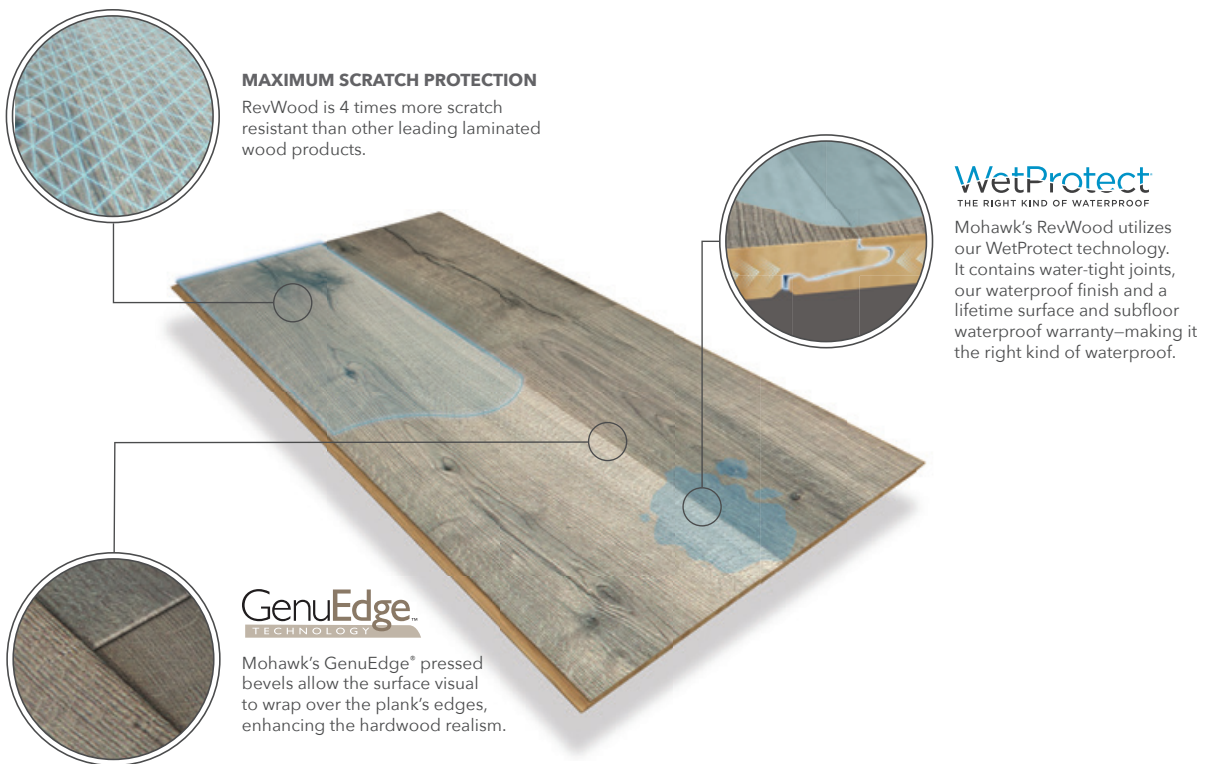


# RevWood Plus Collection

RevWood Plus from Aladdin Commercial is the latest innovation in hard surface flooring. The collection offers a durable, waterproof flooring system, in a variety of hardwood looks and colors.

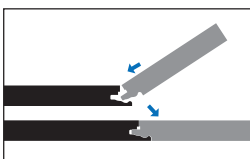
## Features:

- 6.125" x 47.25", 7.5" x 54.3, and 9.44" x 80.50" sizes
- AC4 Wear Rating
- Matte Finish
- Waterproof flooring system protects floors and subfloors from moisture
- FloorScore® Certified
- Ease of installation with Uniclic® Locking System
- Limited Lifetime Wear, Stain, and Fade Warranty
- Lifetime Uniclic® System Warranty
- WetProtect Lifetime Surface & Subfloor Waterproof Warranty



## Uniclic®

Mohawk's Uniclic® can be installed using two methods.



# Revolutionary Wood Flooring From Aladdin

Aladdin Commercial's RevWood Plus collection offers the ultimate hard surface flooring solution, giving you all the beauty of gorgeous hardwood in waterproof flooring built to last.

## DURABLE

Highly practical and extremely durable, RevWood Plus is protected by a tough wear layer that resists scuffs, scratches and dents to keep your floor looking like new.

## STAIN RESISTANT

RevWood Plus also resists stains, allowing food, dirt and pet accidents to be cleaned completely and forgotten. And RevWood Plus proudly carries Mohawk's All Pet Protection, the only warranty covering all pets and all accidents, all the time.

## WATERPROOF

WetProtect is the right kind of waterproof, featuring water-tight joints that prevent water from leaking through gaps to damage your subfloor, and a waterproof finish that traps moisture on the surface.

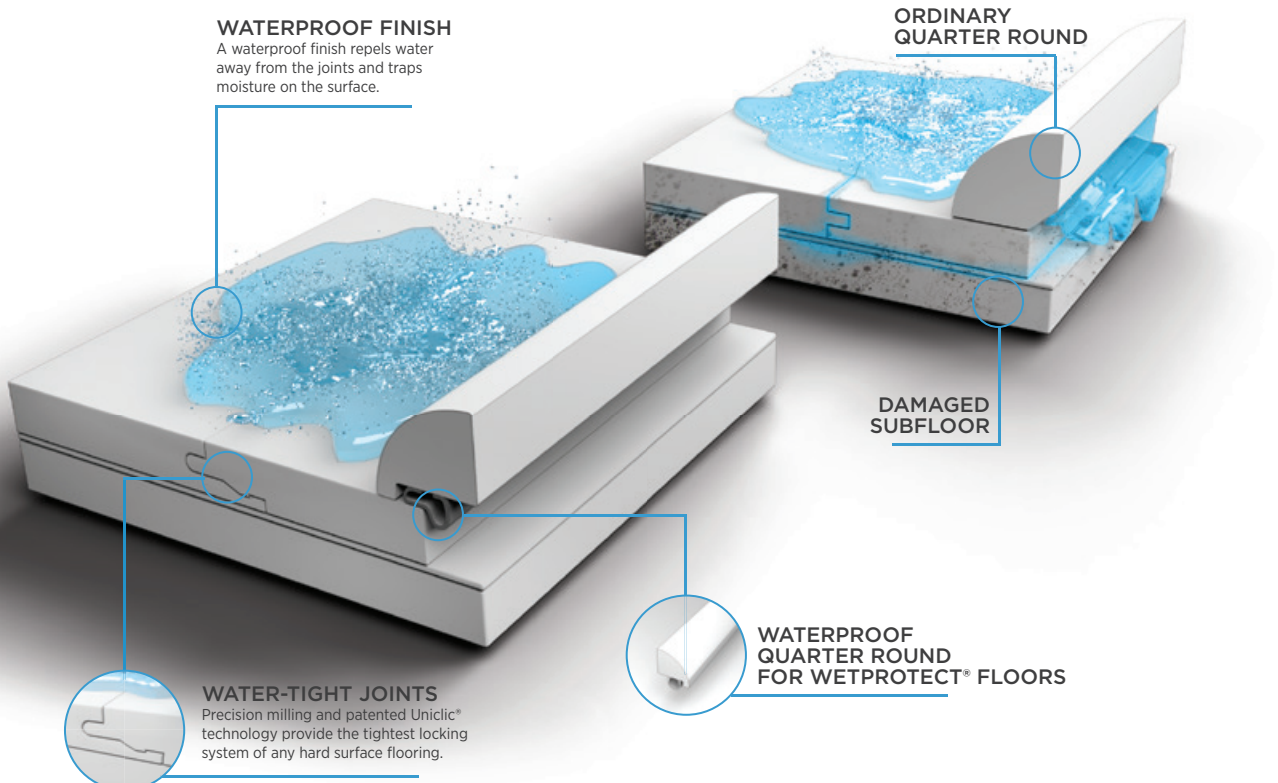
## WetProtect

THE RIGHT KIND OF WATERPROOF

WetProtect is full-coverage waterproof protection backed by a lifetime surface and subfloor waterproof warranty.

## WetProtect PRODUCTS

## ORDINARY PRODUCTS





# Colorways for RevWood Plus Collection

Choose from distressed designs or opt for natural hardwood character in colors ranging from cool grays to warm browns. Whether your taste is modern, classic or rustic, you are sure to find the perfect look for your commercial space.

## Contemporary Craft



938 Vintage Oak



923 Seashell Oak

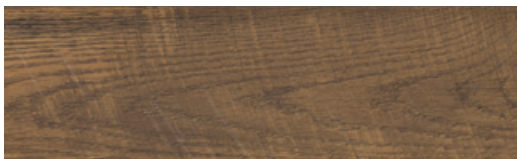


849 Deepened Oak

## Progressive Craft

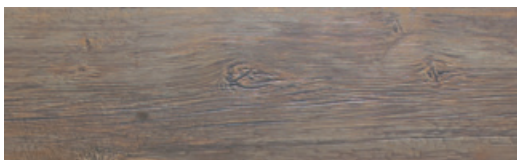


839 Morning Light Oak



842 Sun Kissed Oak

## Balanced Artistry



853 Weathered Pine

## Dynamic Composition



843 Boardwalk Oak

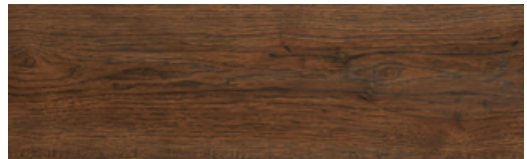


825 Modern Oak



831 Coastal Oak

## Popular Commentary



832 Cinnamon Oak



833 Misted Oak

## Progressive Influence



869 Contemporary Oak

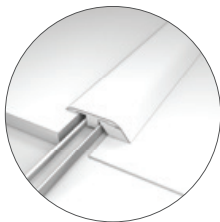
# RevWood Plus Transitions

Finish your new RevWood Plus floor with a complete line of color coordinating trims featuring quarter round, stair nosing, and Aladdin Commercial's revolutionary 5-in-1 molding allowing a single transition to create five different applications.



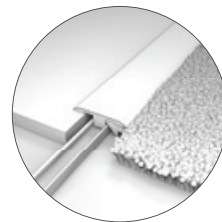
## 5-IN-1: T-MOLDING

Connects two sections of floors of equal height.



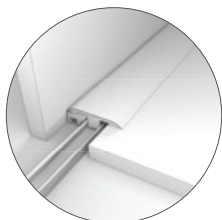
## 5-IN-1: HARD SURFACE REDUCER

Provides a smooth transition between hard surface floors at different height levels.



## 5-IN-1: CARPET TRANSITION

Creates a transition from hard surface to carpet.



## 5-IN-1: END MOLDING

Finishes floor at a doorway, fireplace or wall.



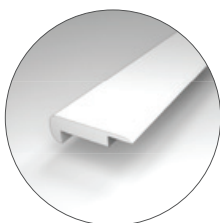
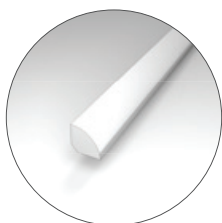
## 5-IN-1: STAIR NOSE

Finishes stair treads with an overlap or flush mount configuration.  
**NOTE:** 5-in-1 stair nose assembly requires additional purchase of the aluminum track (ABASE).



## QUARTER ROUND

Provides a smooth transition from a baseboard to the floor surface.



## OVERLAP STAIR NOSE

Provides a stair tread solution in an overlap configuration.

## REWOOD PLUS ACCESSORIES

Style	Color	5-in-1	Overlap Stair Nose	Quarter Round	Waterproof Quarter Round	5BASE
Contemporary Craft (AH040)	Stone Hearth Oak	AINC5-03765	AMSNP-03765	AMQND-03765	WPQR-WHITE	ABASE-03
	Espresso Bark Oak	AINC5-04562	AMSNP-04562	AMQND-04562	WPQR-WHITE	ABASE-03
	Cotton Knit Oak	AINC5-03781	AMSNP-03781	AMQND-03781	WPQR-WHITE	ABASE-03
Progressive Craft (AH041)	Gingerglow Oak	AINC5-01001	AMSNP-01001	AMQND-02669	WPQR-WHITE	ABASE-06
	Wheat Field Oak	AINC5-02893	AMSNP-02893	AMQND-02893	WPQR-WHITE	ABASE-06
Popular Commentary (AH042)	Bungalow Oak	AINC5-03745	AMSNP-03745	AMQND-03745	WPQR-WHITE	ABASE-06
	Aged Copper Oak	AINC5-03717	AMSNP-03717	AMQND-03717	WPQR-WHITE	ABASE-06
Balanced Artistry (AH043)	Buckhorn Pine	AINC5-04250	AMSNP-04250	AMQND-04250	WPQR-WHITE	ABASE-06
Progressive Influence (AH044)	Wrought Iron Oak	AINC5-03747	AMSNP-03747	AMQND-03747	WPQR-WHITE	ABASE-04
Dynamic Composition (AH045)	Sand Pearl Oak	AINC5-05084	AMSNP-05084	AMQND-05084	WPQR-WHITE	ABASE-04
	Lunar Oak	AINC5-04785	AMSNP-04785	AMQND-04785	WPQR-WHITE	ABASE-04
	Trinket Oak	AINC5-04807	AMSNP-04807	AMQND-04807	WPQR-WHITE	ABASE-04

# Specifications

LAMINATED WOOD

Brand .....	<b>Aladdin Commercial</b>
Style Name / Number .....	<b>Contemporary Craft / AH040, Progressive Craft / AH041, Popular Commentary / AH042, Balanced Artistry / AH043, Progressive Influence / AH044, Dynamic Composition / AH045</b>
Product Type .....	Laminated Wood
Wear Layer .....	AC4 Wear Rating
Finish .....	Matte
Classification .....	NALFA Class 3 Commercial
Squareness .....	NALFA 3.8 Class 3 Commercial
Static Load Limit .....	NALFA 3.1 Class 3 Commercial
Residual Indentation .....	NALFA Class 3 Commercial
Slip Resistance .....	NALFA 3.4 Cleanability Class 3 Commercial
Resistance to Chemicals .....	ASTM F925 - Passes - No more than a slight change in surface dylling, surface attack or staining
Resistance to Light .....	NALFA 3.3 Class 3 Commercial
Resistance to Heat Flux .....	ASTM E648 - Critical Radiant Flux - Class 1
Smoke Density .....	ASTM E662 Flaming - Less than 450
Installation Method .....	Uniclic®
Adhesive .....	6 oz. Instamatch - Unlimited Color Combination Putty Kit
Optional Underlayment .....	Platinum™, SilentGuard™, MoistureGuard™, RealSound™
Certification .....	FloorScore® Certified SCS-FS-02847
Warranty .....	Limited Lifetime Residential Warranty Lifetime Waterproof Warranty 10 Years Light to Medium Commercial Warranty

Style Name / Number .....	<b>Contemporary Craft / AH040</b>
Colors Available .....	3
Size .....	9.44" x 80.5"
Packaging .....	5 pcs/ctn
SF/Carton .....	26.48 sqft/ctn
Cartons/Pallet .....	39 ctn/pallet
Weight/Carton .....	48.95 lbs/ctn

Style Name / Number .....	<b>Progressive Craft / AH041</b>
Colors Available .....	2
Size .....	6.125" x 47.25"
Packaging .....	8 pcs/ctn
SF/Carton .....	16.12 sqft/ctn
Cartons/Pallet .....	60 ctn/pallet
Weight/Carton .....	32.08 lbs/ctn

Style Name / Number .....	<b>Popular Commentary / AH042</b>
Colors Available .....	2
Size .....	7.5" x 54.34"
Packaging .....	6 pcs/ctn
SF/Carton .....	16.93 sqft/ctn
Cartons/Pallet .....	50 ctn/pallet
Weight/Carton .....	35.97 lbs/ctn

Style Name / Number .....	<b>Balanced Artistry / AH043</b>
Colors Available .....	1
Size .....	7.5" x 54.34"
Packaging .....	6 pcs/ctn
SF/Carton .....	16.93 sqft/ctn
Cartons/Pallet .....	50 ctn/pallet
Weight/Carton .....	35.97 lbs/ctn

Style Name / Number .....	<b>Progressive Influence / AH044</b>
Colors Available .....	1
Size .....	7.5" x 54.34"
Packaging .....	6 pcs/ctn
SF/Carton .....	16.93 sqft/ctn
Cartons/Pallet .....	50 ctn/pallet
Weight/Carton .....	35.97 lbs/ctn

Style Name / Number .....	<b>Dynamic Composition / AH045</b>
Colors Available .....	3
Size .....	9.44" x 80.50"
Packaging .....	5 pcs/ctn
SF/Carton .....	24.48 sqft/ctn
Cartons/Pallet .....	52 ctn/pallet
Weight/Carton .....	49.03 lbs/ctn



Mohawk Industries, Inc. warrants its adhesives for the life of the original installation only when a Mohawk Industries style (product) is installed. Mohawk's floor preparation procedures must be followed to ensure that the substrate has been prepared properly. Failure to use Mohawk Industries adhesives or to follow Mohawk's floor preparation procedures will void all lifetime adhesive warranties. Please contact your local Sales Representative for installation guidelines.

Mohawk is providing this architect folder for the purpose of promoting our commercial business. Color may vary from dye lot to dye lot. Substitution of material may be made due to improved technology, supply limitations or other factors. The performance of this product is not affected by such variations. We recommend the use of chair pads on all commercial installations.

For current and complete specifications please call tech support at 888-387-9881, option 3, or visit [www.AladdinCommercial.com](http://www.AladdinCommercial.com) | 800.233.4490

1195\_Aug/2021

