



Urban Shores

Drifting Current Floating Forms



Urban Shores

Throughout history, rivers have driven the evolution of urban development. Some of the oldest cities were built near these waterways for transportation, energy and trade. Today, rivers create opportunities for recreation and bring people together. River influence on cities inspired Mohawk Group's Urban Shores collection. As part of The Waterways Project, the collection fosters a symbiotic relationship with rivers and interior spaces by encouraging respect for and protection of our water ecosystems. Mohawk Group's Pattern Perfect tufting technology brings these biophilic patterns to life through precision color placement with exceptional definition and clarity.

Learn more at mohawkgroup.com



Urban Shores is a part of the Waterways Project, our company-wide work to conserve river systems.

To learn more about the Waterways Project and our water conservation efforts, visit our website.





Cover: Floating Forms 959 Inlet; Large & Local Wood 978 Woody
Above: Drifting Current 548 Riverside



Drifting Current

COLORWAYS

Rich with depth and dimensionality, Drifting Current is a contemporary organic pattern with soft linear undertones that create a sense of flow.



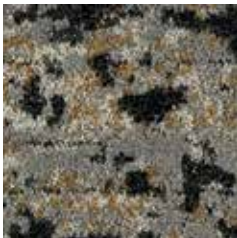
525 Ocean Spray



548 Riverside



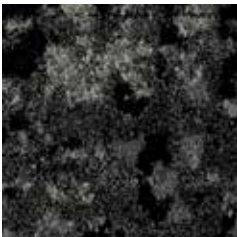
838 Pier



938 Cascade



959 Inlet



985 Nightwater

Floating Forms

COLORWAYS

Floating Forms presents refined layers of gridding and linearity, as color and pattern gently emerge and submerge across a calm surface.



525 Ocean Spray



548 Riverside



838 Pier



938 Cascade



959 Inlet



985 Nightwater



Pattern Perfect

Design Freedom

Offered in broadloom and tile formats, Pattern Perfect offers the ultimate design freedom, with large-scale broadloom designs for public spaces or carpet tile systems to blend patterns across different configurations.

Rich Textural Designs

High and low loop construction created from industry-leading tufting technology allows us to create rich textural designs through precise color placement and multi-level cut and loop to elevate interiors.

Easy Personalization

Innovative Pattern Perfect technology provides flexibility in design and color to create tailored or hand-crafted styling perfect for any public space.

Up the texture with Mohawk Group's proprietary Pattern Perfect technology. Bring depth, warmth and tactility to any contract interior and deliver exceptional definition and color clarity to any project. Perfect your design, imagine the possibilities and feel good about the designs you create.



Drifting Current 548 Riverside, Floating Forms 959 Inlet;
Second Home Wood 838 Balanced Beige, Large & Local Wood 978 Woody



Gridded Channel (12CB895L) Broadloom 938 Cascade - 250 SY minimum





Waterly (12CB904V) Broadloom 985 Nightwater - 250 SY minimum



Influx (12CB895M) Broadloom 959 Inlet - 250 SY minimum



Groundswell (12CB859J) Broadloom 548 Riverside - 250 SY minimum



Gridside (12CB904U) Broadloom 548 Riverside - 250 SY minimum



Misty Melange (12CB904C) Broadloom 938 Cascade - 250 SY minimum



Restorative Waters (12CB905W) Broadloom 959 Inlet - 250 SY minimum



Seastead (12CB895O) Broadloom 525 Ocean Spray - 250 SY minimum



Hydrology (12CB903A) Broadloom 525 Ocean Spray - 250 SY minimum



Leading Light (12CB904A) Broadloom 548 Riverside - 250 SY minimum





Modern Mist (12CB903Z) Broadloom 959 Inlet - 250 SY minimum



River health is human health. That's why we're launching The Waterways Project – a journey through new products, technologies and initiatives to help us better understand and give back to the living rivers that sustain us all.

Restoring River Ecosystems

At Mohawk Group, we have a longstanding commitment to reduce water usage and conserve water ecosystems. It's a big part of how we help you create spaces that are environmentally responsible and mindful of people's health and wellbeing. This year, we're expanding our efforts by working to make a greater positive impact on rivers and the life they make possible.

With The Waterways Project, we're bringing you on a journey to experience and help restore river ecosystems. You'll discover a series of collections designed to help you foster a symbiotic relationship with rivers in your work, with products made with new technologies that enable you to protect water ecosystems. And your specification will support river restoration projects, thanks to our partnerships with Change the Course and Waterkeeper Alliance. These nonprofits are helping communities like yours restore and protect rivers across North America and the world.



As the largest and fastest-growing non-profit solely focused on clean water, Waterkeeper Alliance connects more than 350 grassroots Waterkeeper groups around the world, protecting 2.8 million square miles of waterways in 46 countries. We're proud to support the global work of the Alliance, donating funds and committing hundreds of hours of volunteer time to river cleanups around the US.



Funding a range of water stewardship projects, Change the Course is building a self-sustaining cycle of community education, ecosystem restoration and ongoing conservation of river systems across North America. For every square yard of product purchased from The Waterways Project collections, we will restore 350 gallons of water* – helping you make a lasting contribution to the health of American rivers and communities.

*Based on 2021 estimations, totaling 8 million gallons of water restored.



Personal Studio

FLOORING PERSONALIZED BY YOU

Introducing Personal Studio (p.s.), our innovative design personalization tool that allows you to put your own flair to our running line products, so you can make designs as unique as your project.

p.s. was developed to provide you with a tool that will allow you to streamline your efforts and respond quickly.



Visualize In A Room

You can personalize the color in any design from our selection of soft surface products, visualize it in a room scene, and order digital, print or physical samples easily.

Photorealistic Simulations

Personal Studio uses photorealistic simulations of the cut and loop textures of our PDI Synthesis bases and our CYP, Definity and tufted constructions so your designs are very close to the final product.

Find The Perfect Color

You can quickly iterate through multiple colorways and patterns to find the perfect fit for your project.

Multiple Projects

Save your favorite personalized products per project, and easily switch between them in an easy interface.

Explore: <https://ps.mohawkgroup.com/>



Specifications

Drifting Current (BC578)
Floating Forms (BC579)

DESIGN

Size	12' width (3.66 m)
Pattern Repeat	Drifting Current 72"W x 72.03"L Floating Forms 72"W x 185.8"L
Surface Appearance	Patterned Tip Shear
Fiber Type	Colorstrand® SD Nylon
Dye Method	Solution Dyed
Colors Available	
Drifting Current	6
Floating Forms	6

PERFORMANCE

Construction	Tufted
Gauge	1/12" (47.00 rows per 10cm)
Stain Release Technology	EcoSentry Plus Stain Protection
Soil Release Technology	EcoSentry Soil Protection
Backing Material	Weldlok®
Flammability	ASTM E 648 - Class 1 (Glue Down)
Smoke Density	ASTM E 662 - Less than 450
Static Propensity	AATCC - 134 Under 3.5 KV

SUSTAINABILITY

Indoor Air Quality	Green Label Plus Certified #8216
NSF 140	Gold
Certification	Declare Red List Free
Carbon	Net Positive Carbon (Neutral +5%)

SERVICE

Warranties	Lifetime Limited Wear Warranty, Lifetime Limited Colorfastness to Light, 10 Year Limited Colorfastness to Atmospheric Contaminants, 10 Year Stain Resistance Warranty, Lifetime Static
------------	--

Mohawk Group warrants its adhesives for the life of the original installation only when a Mohawk Group style (product) is installed. Mohawk's floor preparation procedures must be followed to ensure that the substrate has been prepared properly. Failure to use Mohawk Group adhesives or to follow Mohawk's floor preparation procedures will void all lifetime adhesive warranties. Please contact your local Sales Representative for installation guidelines.

These patterns contain inherent characteristics which may result in pattern run off and/or pattern appearance variations at the seams or tile edges (darker or lighter pattern lines). These characteristics are inherent in the patterns and are not manufacturing defects. Consideration to these characteristics should be given when selecting an installation method.

Chair pads are recommended under office chairs with roller casters to preserve appearance retention, act as a deterrent toward delamination and to prevent premature or accelerated wear. Walk-off tiles from the Tuff Stuff II Collection are recommended at entryways to reduce soiling.

Mohawk Group is providing this architect folder for the purpose of promoting our commercial business. This folder and its samples shall remain the property of Mohawk Group. Color may vary from dye lot to dye lot. Substitution of material may be made due to improved technology, supply limitations or other factors. The performance of this product is not affected by such variations.

For current and complete specifications please visit www.mohawkgroup.com

RECOVER
RECYCLING PROGRAM
877-3RE-CYCL



Produced with recycled materials



Mohawk Group

Mohawk Group
160 South Industrial Blvd.
Calhoun, GA. 30701
800.554.6637
mohawkgroup.com

MG741_24PG_BROCHR_LT