



# Timeless Tailored

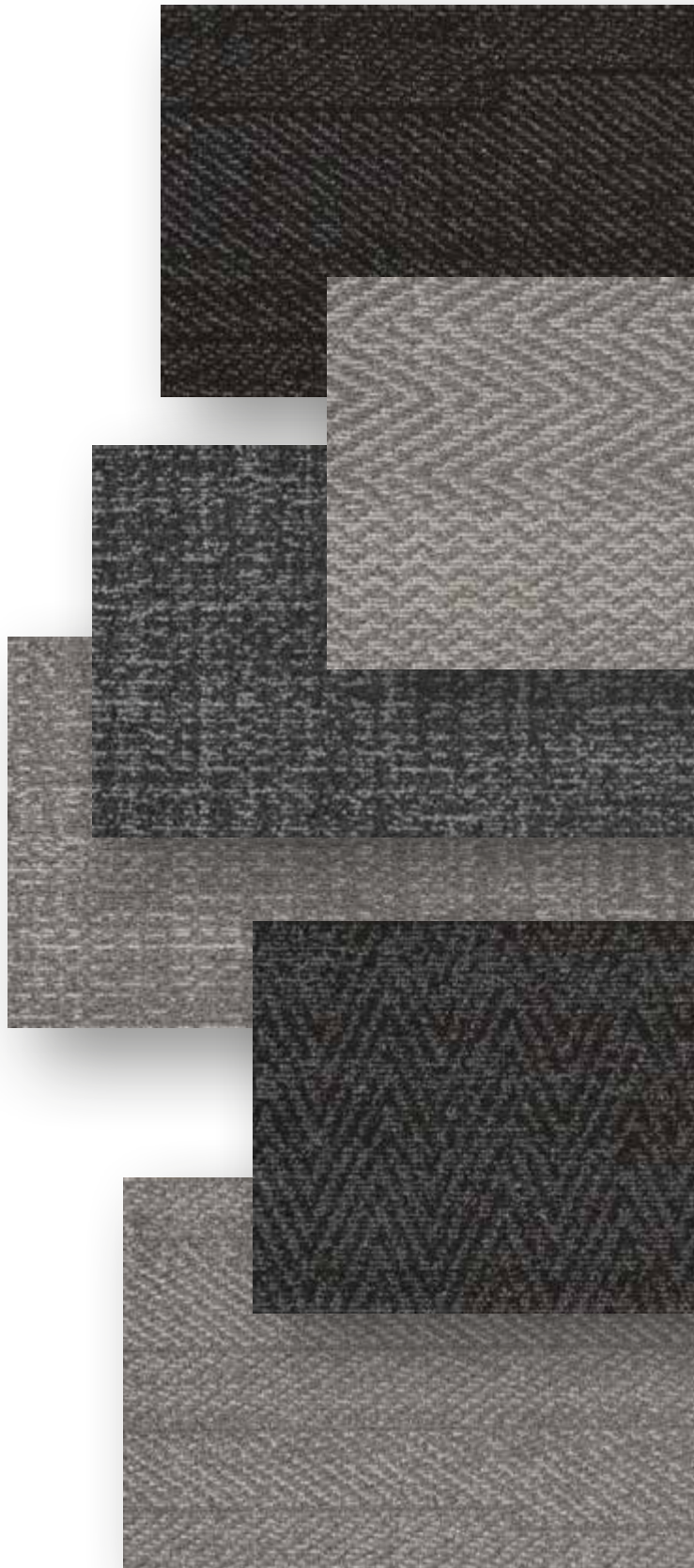
Unexpected Detail Distressed Twill Visual Connections



# Timeless Tailored

Mirroring the classic tweed, twill and detailing of pant suits, our Timeless Tailored collection of modular carpet tile brings an air of sophistication to your floor. With subtle movement, texture and dimension, three styles in eight colorways can be used in tandem to create versatile spaces that stand the test of time.

Learn more at [mohawkgroup.com](https://www.mohawkgroup.com)





Cover: Unexpected Detail and Distressed Twill, 949 Mineral  
Brick Ashlar Installation



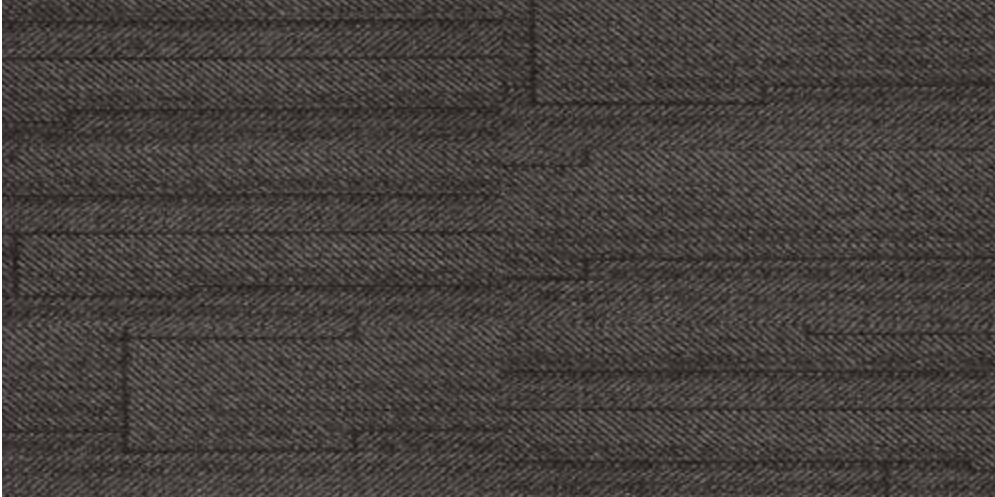
Timeless Tailored celebrates the classic craft of a finely fitted suit, bringing sophistication and elegance to your floor through style and an enduring palette of neutral colorways.



Distressed Twill, 839 Flax; Unexpected Detail and Visual Connections, 859 Taupe  
Half-Lap Installation



Unexpected Detail, 839 Flax  
Brick Ashlar Installation



## Unexpected Detail

Unexpected Detail evokes overlapping strips of herringbone tweed with selvedge effects, building a subtly layered surface.



Unexpected Detail | 535 Cornflower



Unexpected Detail | 545 Royal



Unexpected Detail | 839 Flax



Unexpected Detail | 859 Taupe



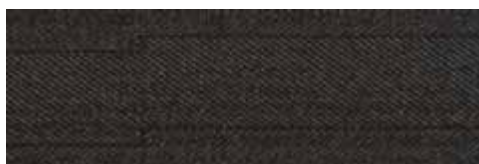
Unexpected Detail | 929 Silver



Unexpected Detail | 949 Mineral



Unexpected Detail | 969 Iron



Unexpected Detail | 989 Charcoal



## Distressed Twill

Distressed Twill juxtaposes the diagonals of zig-zag twill with rhythmic color shifts and patterning within each plank, helping you create a refined yet crafted aesthetic.



Distressed Twill | 535 Cornflower



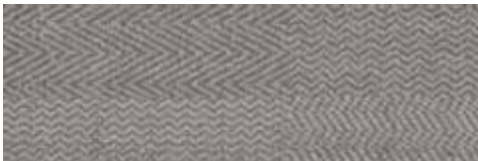
Distressed Twill | 545 Royal



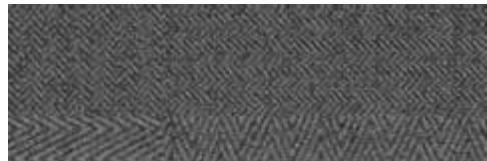
Distressed Twill | 839 Flax



Distressed Twill | 859 Taupe



Distressed Twill | 929 Silver



Distressed Twill | 949 Mineral



Distressed Twill | 969 Iron



Distressed Twill | 989 Charcoal





Distressed Twill, 949 Mineral  
Brick Ashlar Installation



Visual Connections, 949 Mineral  
Brick Ashlar Installation



# Visual Connections

Visual Connections is boldly pixelated, tying together woven aesthetics and graphic impact to deliver a fresh sense of texture for evolving spaces.



Visual Connections | 535 Cornflower



Visual Connections | 545 Royal



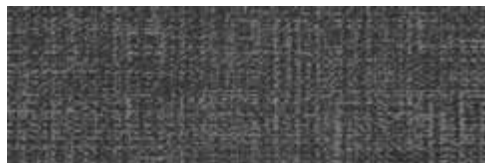
Visual Connections | 839 Flax



Visual Connections | 859 Taupe



Visual Connections | 929 Silver



Visual Connections | 949 Mineral



Visual Connections | 969 Iron



Visual Connections | 989 Charcoal



Timeless Tailored's three modular 12" x 36" carpet planks derive their design from classic suiting textiles in fashion, depicted in small, medium, and large scales. The three plank styles can be utilized throughout entire projects to offer scalable, dynamic installations that create memorable fashion statements. Crafted from our Heathered Hues fiber system, Timeless Tailored planks also coordinate with a wide range of Mohawk Group's tufted products to provide even more design and budget flexibility across multiple applications.



#### **NEXT GENERATION CARPET FIBER**

Duracolor Tricolor's new innovative modified-delta shape and optical core optimize color clarity, strength, stain resistance, and soil hiding and removal. As a result, Duracolor Tricolor delivers the ultimate synthesis of brilliant color and unsurpassed performance.



#### **LIVING PRODUCT CERTIFICATION**

Produced at our Living Site, Timeless Tailored is Net Positive for both carbon and water and achieves Petal Certification from the International Living Future Institute by complying with multiple imperatives of all seven petals.

#### **EcoFlex™ ONE**

##### **CARPET TILE BACKING**

Harnessing proven technology and advanced materials, EcoFlex™ ONE delivers an all-in-one solution for optimal flooring performance and reduced costs, while supporting greater wellness for people and planet.



##### **SEAMLESS TRANSITIONS**

Timeless Tailored does not require transition strips when used with any of our 4.5/5mm LVT products, reducing installation time and costs.

#### **FLEXLOK+**

##### **FLEXLOK+ ADHESIVE TAB**

FlexLok is a worry-free, fume-free, fast and flexible adhesive tab for installing modular carpet on any substrate, including wood, VCT and concrete. The environmentally-friendly FlexLok system is CRI Green Label Certified, Declare Red List Free, and virtually eliminates VOCs.

##### **ADDITIONAL FEATURES**

- Lifetime Duracolor Stain Warranty
- LEED, WELL & LBC Eligible
- Declare Red List Free
- CRI Green Label Plus
- NSF 140 Platinum





## EcoFlex™ ONE

ALL-IN-ONE FLOORING SOLUTION

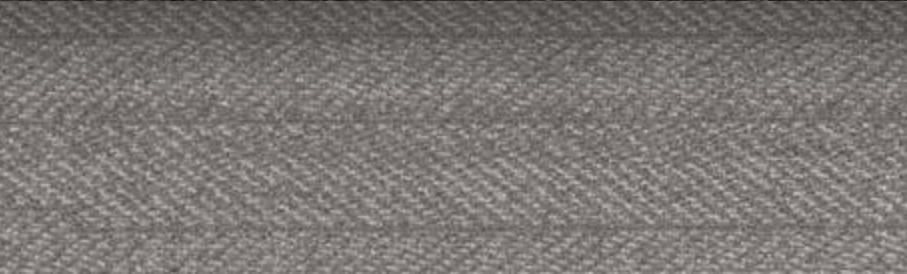
Every element in the EcoFlex ONE construction has purpose, and combined they form the industry's leading modular carpet solution. The hydrophobic PET cushion, backing layers, and Duracolor Tricolor fiber are engineered with your end-goals in mind: to optimize your investment, be sustainably made, and provide a better occupant experience.

### KEY FEATURES

- Better Acoustics
- Enhanced Comfort & Safety
- Worry-Free Installation
- Simplified Maintenance
- NSF 140 Platinum
- Carbon Neutral +5%
- Limited Lifetime Warranty

EcoFlex™ ONE is a unified solution to the wide range of needs in your spaces. This advanced backing system improves every aspect of comfort and acoustics while eliminating moisture testing—all with a lighter environmental footprint that is carbon neutral plus an additional 5% offset. Tested and proven, EcoFlex™ ONE is the holistic solution for human-centric environments.

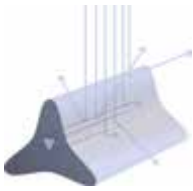








Delivering unsurpassed stain resistance, colorfastness, durability, color clarity and enhanced soil performance, Duracolor Tricolor builds upon the trusted Duracolor promise with over 175 million yards installed since 1992.



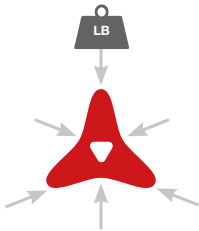
**Soil Control**

Our advanced Duracolor Tricolor fiber optimizes soil hiding, soil removal and color clarity through its unique modified-delta shape and triangular hollow core. The result is carpet with brilliant color that retains its beauty between cleanings and requires less maintenance over time, saving facilities time and money.



**Stain Resistance**

To combat carpet staining—often regarded as the biggest challenge in maintaining commercial spaces—Duracolor Tricolor utilizes the patented Duracolor process for permanent built-in stain resistance that won't wash or wear off. Up to 96% of the most common stain-causing substances can be easily cleaned with just water, saving facilities time and money. Duracolor Tricolor's stain resistance also translates to less frequent replacement, for additional life-cycle savings.



**Durability**

Duracolor Tricolor's fiber shape and hollow core deliver an innovative carpet that resists crushing for enhanced durability and longer life-cycles. In order to improve an already strong fiber, our engineers looked to load bearing structures such as bridges and trusses and discovered the power of the triangle, a shape that delivers ultimate load bearing performance. The innovative modified delta shape of each individual Duracolor Tricolor fiber provides tremendous strength for enhanced durability.

**Declare.** 

**Sustainability**

At Mohawk Group, we feel a profound sense of responsibility to minimize our ecological footprint, and we developed Duracolor Tricolor with this responsibility in mind. It's part of our commitment to Believe in Better, helping advance our mission to build a more sustainable future.



**Performance**

Duracolor fiber has set the standard of high-performance commercial carpet since 1992. With enhanced soil hiding and removal capabilities, Duracolor Tricolor builds upon a fiber already trusted to perform in demanding environments. When compared head to head to competitive nylon products, Duracolor Tricolor delivers trusted performance.



# Specifications

**Unexpected Detail** (GT468)  
**Distressed Twill** (GT469)  
**Visual Connections** (GT470)

## DESIGN

Size	12" x 36" (.3048 m x .9144 m)
Surface Appearance	Level Patterned Loop
Fiber Type	Duracolor® Tricolor Premium Nylon
Dye Method	Solution Dyed
Installation Methods	Monolithic / Half-Lap / Brick Ashlar / Basket Weave / Plank Half-Lap / Monolithic Stepping / Random / Herringbone
Colors Available	
Unexpected Detail	8
Distressed Twill	8
Visual Connections	8

## PERFORMANCE

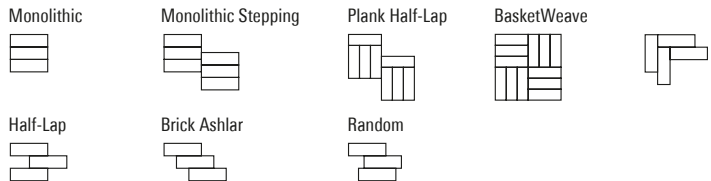
Construction	Tufted
Gauge	1/12" (47.00 rows per 10cm)
Stain Release Technology	Permanent, Built into the Fiber
Soil Release Technology	EcoSentry Soil Protection
Backing Material	EcoFlex™ ONE
Flammability	ASTM E 648 - Class 1 (Glue Down)
Smoke Density	ASTM E 662 - Less than 450
Static Propensity	AATCC - 134 Under 3.5 KV

## SUSTAINABILITY

Certification	Living Product Challenge Petal Certified; Declare Red List Free
Indoor Air Quality	Green Label Plus Certified #1171
NSF 140	Platinum
Carbon	Net Positive Carbon (Neutral +5%)
Water	Net Positive Water (Neutral +5%)

## SERVICE

Warranties	Lifetime Limited Carpet Tile Warranty, Lifetime Limited Duracolor® Stain Warranty, Lifetime Static
------------	--



Mohawk Group warrants its adhesives for the life of the original installation only when a Mohawk Group style (product) is installed. Mohawk's floor preparation procedures must be followed to ensure that the substrate has been prepared properly. Failure to use Mohawk Group adhesives or to follow Mohawk's floor preparation procedures will void all lifetime adhesive warranties. Please contact your local Sales Representative for installation guidelines.

**These patterns contain inherent characteristics which may result in pattern run off and/or pattern appearance variations at the seams or tile edges (darker or lighter pattern lines). These characteristics are inherent in the patterns and are not manufacturing defects. Consideration to these characteristics should be given when selecting an installation method.**

Chair pads are recommended under office chairs with roller casters to preserve appearance retention, act as a deterrent toward delamination and to prevent premature or accelerated wear. Walk-off tiles from the Tuff Stuff II Collection are recommended at entryways to reduce soiling.

Mohawk Group is providing this architect folder for the purpose of promoting our commercial business. This folder and its samples shall remain the property of Mohawk Group. Color may vary from dye lot to dye lot. Substitution of material may be made due to improved technology, supply limitations or other factors. The performance of this product is not affected by such variations.

For current and complete specifications please visit [www.mohawkgroup.com](http://www.mohawkgroup.com)



877-3RE-CYCL

Produced with recycled materials



Mohawk Group

Mohawk Group  
160 South Industrial Blvd.  
Calhoun, GA. 30701  
800.554.6637  
mohawkgroup.com

MG747 20PG. BROCHR LT