



Spatial Build

Dynamic Fade Dynamic Field Dynamic Flow



Spatial Build

Color, performance, and sustainability converge in Spatial Build, a carpet tile collection designed for dynamic spaces. With layered, organic patterns, the collection creates smooth color gradients and ombré effects across the floor. Designers can craft subtle transitions, bolder color-blocking, or pops of accent color within a neutral field—making wayfinding and zoning both intuitive and visually engaging.

In a broad range of hues to suit education, workplace, and retail environments, Spatial Build delivers uncompromising performance. The collection is sustainably made with our patented Duracolor® Tricor fiber technology and EcoFlex® ONE backing, providing exceptional durability—while helping you build healthier, more comfortable, and more inspiring spaces.



Learn more at mohawkgroup.com

Cover:
Dynamic Fade 934 Cornice Plum, Dynamic Flow 934
Cornice Plum, Dynamic Field 935 Concrete Form,
Neutral Timber 811 Canvas Oak, Tinted Timber
Deep Tint 484 Violet Shade
Custom Installation





Dynamic Flow 985 Patina Glaze, Dynamic Fade 985 Patina Glaze,
Dynamic Field 978 Weathered Cladding
Custom Installation



Dynamic Field 848 Timber Joint
Custom Installation



Dynamic Field 358 Terracotta Cast,
Dynamic Flow 738 Sandstone Flute, Dynamic Fade 738 Sandstone Flute
Custom Installation

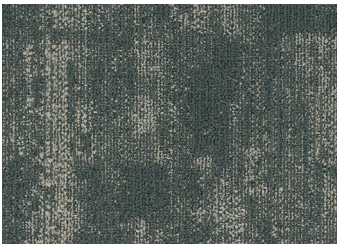


Colorways

Spatial Build is a modular tile system comprised of three styles that work together or can be used independently. Dynamic Field provides a base colorway, Dynamic Fade introduces a small amount of accent color, and Dynamic Flow brings in a greater density of accent color. Combined, the three styles can build soft gradients of neutrals or transition into ebbs and flows of brights.

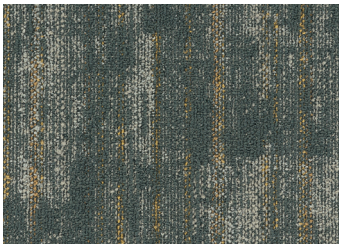
Start with a more colorful base, shown below, and build color on color. Or start with a neutral base, shown at right. The neutrals can stay neutral with tonal gradations, or drift into lighter or heavier densities of brights. For spaces needing hard surface flooring, Spatial Build coordinates in color with Tinted Timber LVT and can seamlessly pair with Neutral Timber 5.0 with no transition strips.

Dynamic Field
(Base)



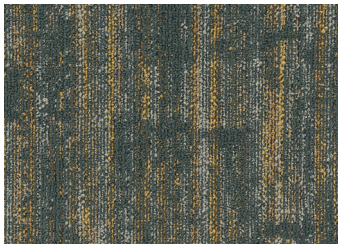
649 Verdant Facade

Dynamic Fade
(Bright Accent)

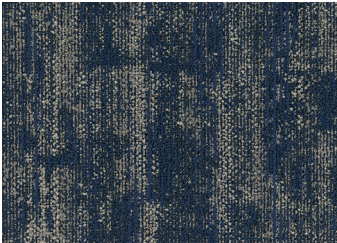


641 Solar Canopy

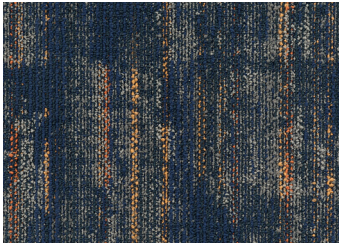
Dynamic Flow
(Bright Accent)



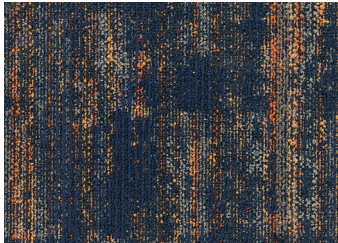
641 Solar Canopy



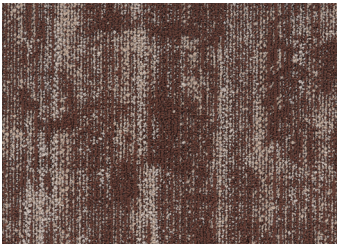
575 Blueprint



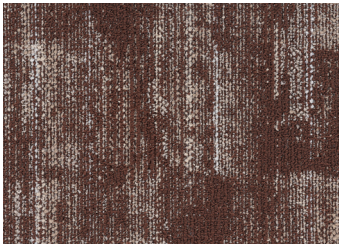
572 Thermal Grid



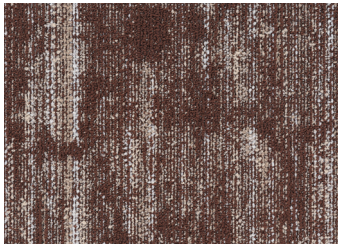
572 Thermal Grid



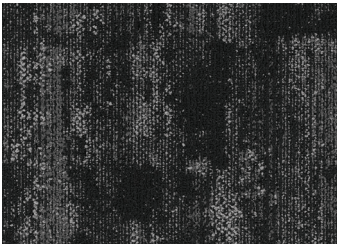
358 Terracotta Cast



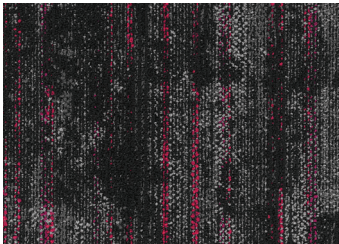
357 Brushed Clay



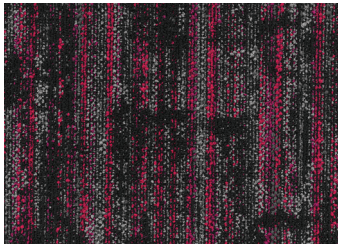
357 Brushed Clay



989 Anchor Point



983 Impact Zone



983 Impact Zone

Dynamic Flow
(Neutral Accent)



919 Stonewash

Dynamic Fade
(Neutral Accent)



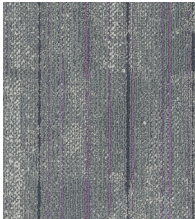
919 Stonewash

Dynamic Field
(Base)



917 Hearthstone

Dynamic Fade
(Bright Accent)



934 Cornice Plum

Dynamic Flow
(Bright Accent)



934 Cornice Plum



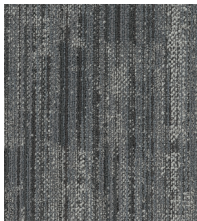
939 Aggregate Grey



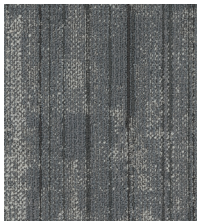
939 Aggregate Grey



935 Concrete Form



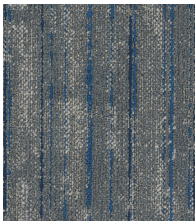
969 Rustic Steel



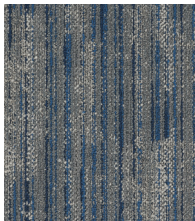
969 Rustic Steel



965 Steel Frame



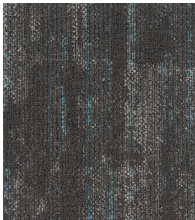
975 Framework Blue



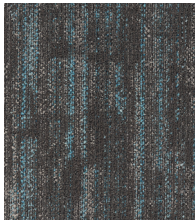
975 Framework Blue



978 Weathered Cladding



985 Patina Glaze



985 Patina Glaze



858 Charred Timber



858 Charred Timber



848 Timber Joint



738 Sandstone Flute



738 Sandstone Flute



728 Structural Sand



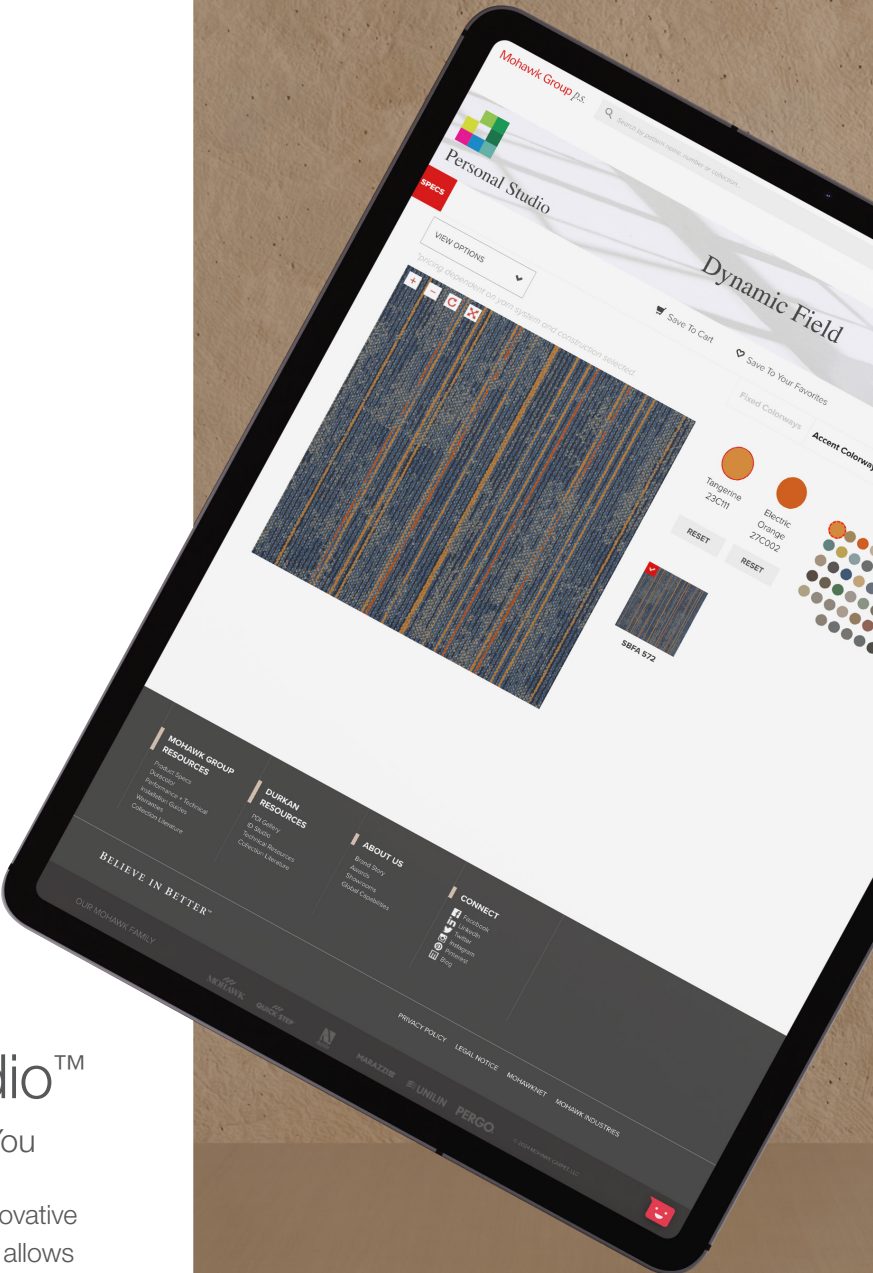
722 Adobe Glow



722 Adobe Glow



Dynamic Field 649 Verdant Facade, Dynamic Fade 641 Solar Canopy,
Tinted Timber Deep Tint 686 Deep Evergreen
Custom Installation



Personal Studio™

Flooring Personalized by You

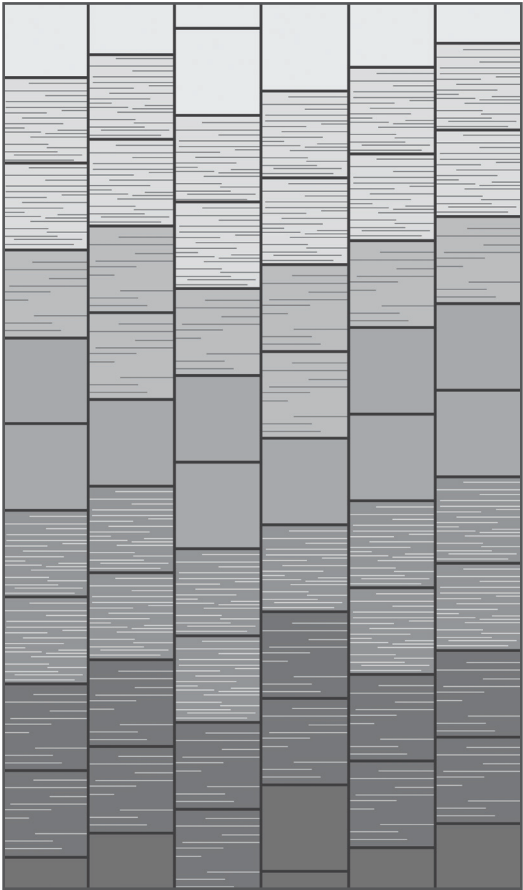
Personal Studio™ (p.s.), our innovative design personalization tool that allows you to put your own accent to our running line products, so you can make designs as unique as your project. Spatial Build has a 50sy minimum for changes to accent colors only.



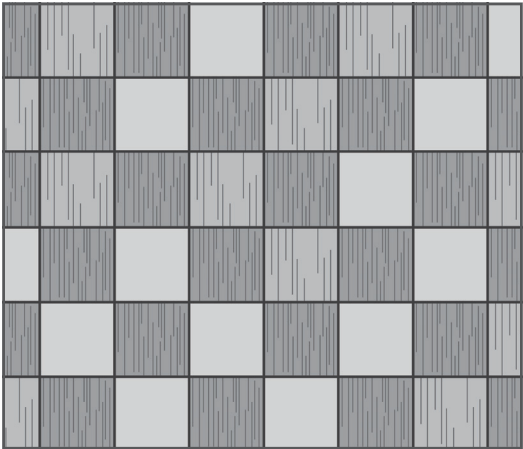
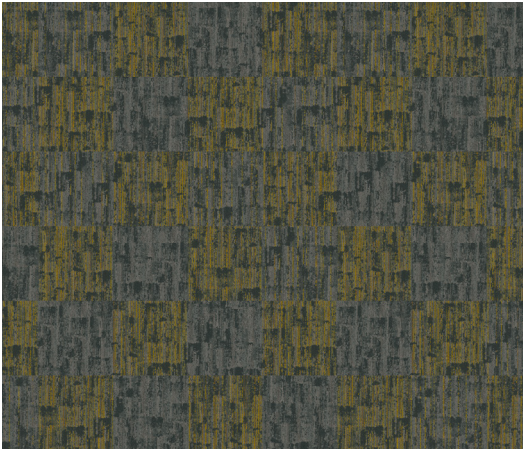


Installation Inspirations

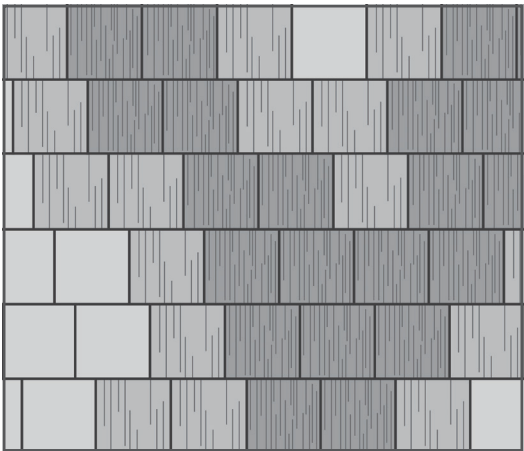
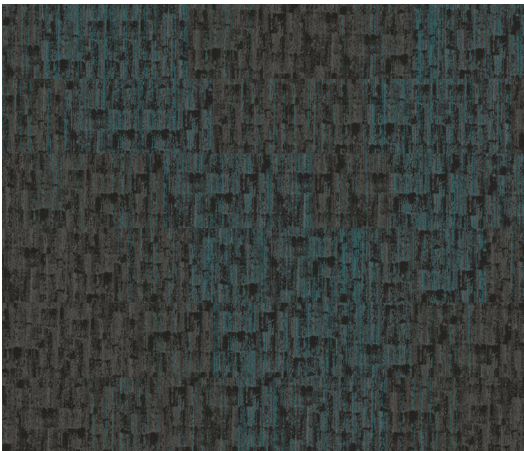
The installation ideas featured here are a small sampling of the infinite possibilities offered with Spatial Build.



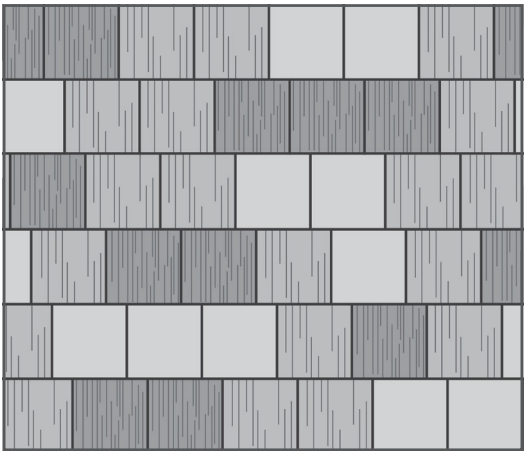
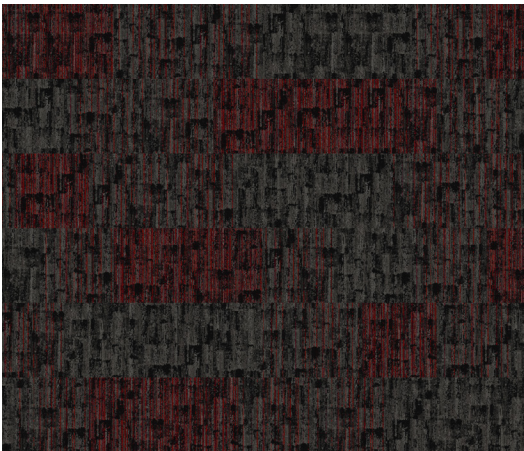
Dynamic Field 728, Dynamic Fade 738, Dynamic Flow 738, Dynamic Field 848,
Dynamic Fade 858, Dynamic Flow 858, Dynamic Field 978
Brick Ashlar Custom Installation



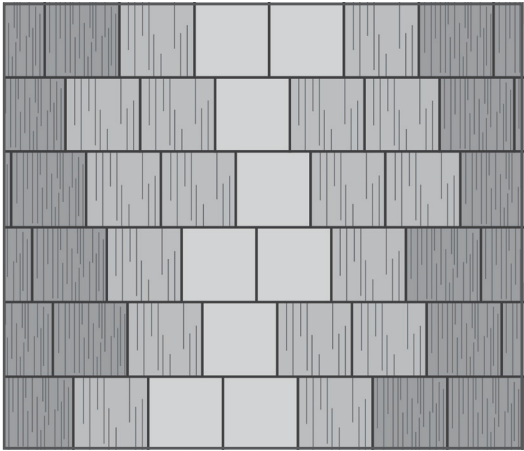
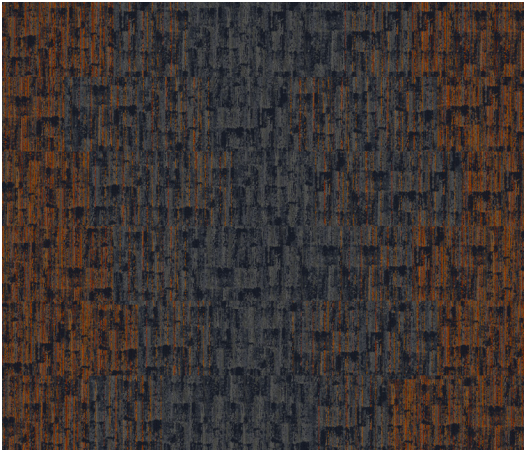
Dynamic Field 649, Dynamic Fade 641, Dynamic Flow 641
Monolithic Custom Installation



Dynamic Field 978 Weathered Cladding, Dynamic Fade 985 Patina Glaze, Dynamic Flow 985 Patina Glaze
Brick Ashlar Custom Installation



Dynamic Field 989 Anchor Point, Dynamic Fade 983 Impact Zone, Dynamic Flow 983 Impact Zone
Brick Ashlar Custom Installation



Dynamic Field 575, Dynamic Fade 572, Dynamic Flow 572
Brick Ashlar Custom Installation



Dynamic Field 965 Steel Frame, Dynamic Flow 969 Rustic Steel
Neutral Timber 848 Cocoa Oak, Tinted Timber Deep Tint 626 Eucalyptus Veil
Custom Installation

Better for People and Planet

Our future depends on the work we do today. At Mohawk Group, commitment to our planet extends beyond just products and processes: it's how we challenge ourselves to do and be better every day, how we make decisions, how we reinvest in our people and our planet, and how we define what matters most as we work to deliver value for generations to come.



**better
for
people**

Human Health

Declare Red List Free
Health Product Declaration
Green Label Plus Certified

Mohawk Group is proud to provide products with Green Label Plus certifications for better indoor air quality and free of Red List chemicals.



**better
for the
planet**

Climate Health

UL Certified EPD



Living Product Challenge Certified

Spatial Build carpet tile is net-positive for carbon and water and achieves Petal Certification from the International Living Future Institute by complying with multiple imperatives of all seven petals.

Net Zero Carbon Emissions by 2040

We've signed The Climate Pledge to be net zero by 2040 and have already started major changes to reduce our carbon footprint.

Circular Economy

End of Life Options

Take Back Program (ReCover)

Ecosystem Health

Neutral Is Not Enough

With the holistic improvement of the lifecycle of our flooring products – from full product transparency, to reduced water usage in manufacturing, to carbon neutrality and beyond – better is just the beginning.

Beyond Carbon Neutral

Carbon neutral plus an additional 5% carbon handprint for a net-positive impact on the environment.

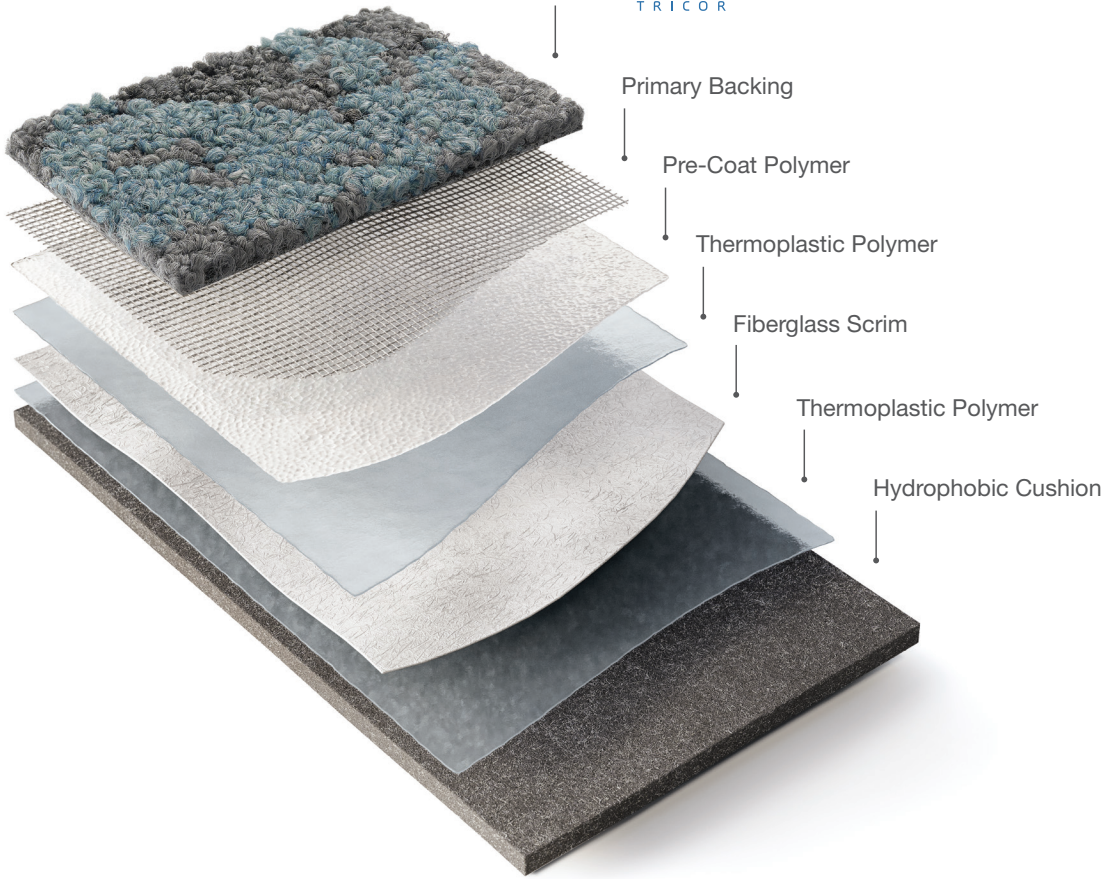
Beyond Water Neutral

All Mohawk Group carpet tiles are water neutral plus an additional 5% water handprint for a net-positive impact on the environment.





duracolor
TRICOR



EcoFlex® ONE

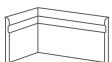
ALL-IN-ONE FLOORING SOLUTION

Every element in the EcoFlex® ONE construction has purpose, and combined they form the industry's leading modular carpet solution. The hydrophobic PET cushion, backing layers, and Duracolor® Tricolor fiber are engineered with your end-goals in mind: to optimize your investment, be sustainably made, and provide a better occupant experience.

KEY FEATURES

- Better Acoustics
- Enhanced Comfort
- Worry-Free Installation
- Simplified Maintenance
- NSF 140 Platinum
- Carbon Neutral +5%
- Limited Lifetime Warranty

EcoFlex® ONE is a unified solution to the wide range of needs in your spaces. This advanced backing system improves every aspect of comfort and acoustics while eliminating moisture testing—all with a lighter environmental footprint that is carbon neutral plus an additional 5% handprint. Tested and proven, EcoFlex® ONE is the holistic solution for human-centric environments.



Elemental Edges
Wall Base

Elemental Edges is a portfolio of architectural wall base for your finishing needs. Featuring a range of colors that coordinate with our full product line, Elemental Edges also offers 14 stocked colors in cove wall base.

Specifications

CARPET TILE

Dynamic Field (GT381)
Dynamic Fade (GT382)
Dynamic Flow (GT383)

DESIGN

Size	24" x 24" (.6096 m x .6096 m)
Surface Appearance	Textured Patterned Loop
Fiber Type	Duracolor® Tricor Premium Nylon
Dye Method	Solution Dyed
Colors Available	Dynamic Field: 10 Dynamic Fade: 13 Dynamic Flow: 13

PERFORMANCE

Construction	Tufted
Gauge	1/12" (47.00 rows per 10cm)
Stain Release Technology	Permanent, Built into the Fiber
Soil Release Technology	EcoSentry Soil Protection
Backing Material	EcoFlex® ONE
Flammability	ASTM E 648 - Class 1 (Glue Down)
Smoke Density	ASTM E 662 - Less than 450
Static Propensity	AATCC - 134 Under 3.5 KV

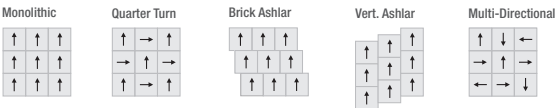
SUSTAINABILITY

Certification	Living Product Challenge Petal Certified; Declare Red List Free
Indoor Air Quality	Green Label Plus Certified
NSF 140	Platinum

SERVICE

Warranties	Lifetime Limited Carpet Tile Warranty, Lifetime Limited Duracolor® Stain Warranty, Lifetime Static
------------	--

Installation Instructions:



Mohawk Group warrants its adhesives for the life of the original installation only when a Mohawk Group style (product) is installed. Mohawk's floor preparation procedures must be followed to ensure that the substrate has been prepared properly. Failure to use Mohawk Group adhesives or to follow Mohawk's floor preparation procedures will void all lifetime adhesive warranties. Please contact your local Sales Representative for installation guidelines.

These patterns contain inherent characteristics which may result in pattern run off and/or pattern appearance variations at the seams or tile edges (darker or lighter pattern lines). These characteristics are inherent in the patterns and are not manufacturing defects. Consideration to these characteristics should be given when selecting an installation method.

Chair pads are recommended under office chairs with roller casters to preserve appearance retention, act as a deterrent toward delamination and to prevent premature or accelerated wear. Walk-off tiles from the Tuff Stuff II Collection are recommended at entryways to reduce soiling.

Mohawk Group is providing this architect folder for the purpose of promoting our commercial business. This folder and its samples shall remain the property of Mohawk Group. Color may vary from dye lot to dye lot. Substitution of material may be made due to improved technology, supply limitations or other factors. The performance of this product is not affected by such variations.

For current and complete specifications please visit www.mohawkgroup.com

RECOVER
RECYCLING PROGRAM
877-3RE-CYCL



Produced with recycled materials



Wister Academy School of Excellence

Mohawk Group

Mohawk Group
160 South Industrial Blvd.
Calhoun, GA. 30701
800.554.6637
mohawkgroup.com

MG820 16PG BROCHR LT