



RevWood Contract

Voxwood



RevWood Contract from Mohawk Group is the latest innovation in hard surface flooring. Featuring the most realistic wood visuals with emboss in register technology, attached pad for premium sound absorption, waterproof click system, and maximum scratch and wear resistance.

The Voxwood style is offered in a color palette ranging from cool grey to rich browns to compliment any interior aesthetic.





04 Heirloom Oak  
Cover: 05 Khaki Oak



# RevWood Contract

## 4x MAXIMUM SCRATCH PROTECTION

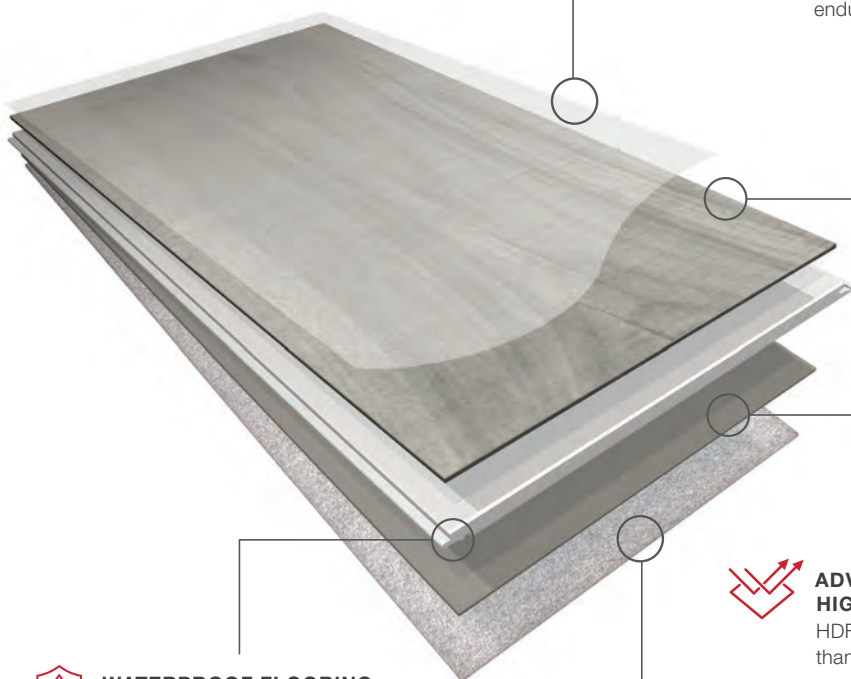
4x more scratch resistant than other leading LVP. AC4 Rated Wear Layer with Aluminum Oxide finish resists even the most extreme scuffs, scratches and dents to keep your floor looking like new.

## FADE RESISTANT

Resists fading when exposed to sunlight

## PREMIUM HARDWOOD VISUALS

Emboss in Register (EIR) technology that combine the beauty of hardwood with the endurance of RevWood.



## WATERPROOF FLOORING SYSTEM

A waterproof finish repels water away from the joints and traps moisture on the surface. Precision milling and patented Uniclic technology provide the tightest locking system of any hard surface flooring and allow for wet mopping and steam mopping.\*



## ADVANCED HIGH-DENSITY FIBERBOARD

HDF core offers greater strength than normal chipboard or MDF



## EXTREMELY QUIET

Premium sound absorbing attached pad gives RevWood Contract an IIC Rating of 57 (8" slab no drop ceiling)

## THICKNESS

9.5mm, 8mm +  
1.5mm Attached Pad

## ADDITIONAL FEATURES

- Floating/click with patented Uniclic locking system
- No underlay or adhesive required

## WARRANTY

10 Year Light Commercial Warranty



\*Refer to RevWood Contract Installation and Care & Maintenance guidelines for proper procedures and equipment.

**NOTE:** RevWood Contract must be installed as a floating floor and expansion joints are required every 50ft in any direction. RevWood Contract is not intended for installation in bathrooms.





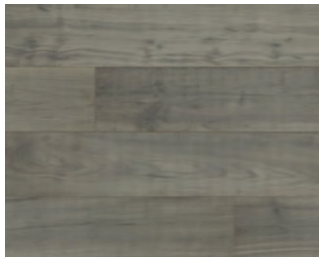


# Voxwood

COLORWAYS



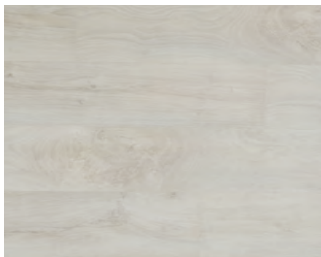
01 Skyline Maple



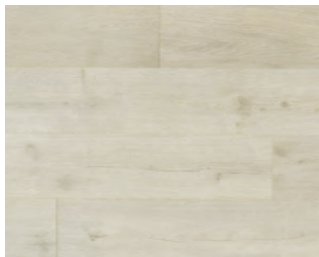
02 Ironcast Maple



03 Brownstone Maple



04 Heirloom Oak



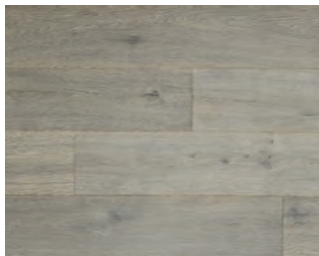
05 Khaki Oak



06 Pumice Oak



07 White Satin Oak



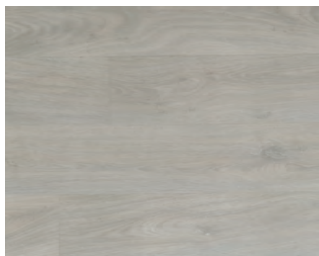
08 Stonefire Oak



09 Terrace Oak



10 Vintage Villa Oak



11 Whitewash Oak











# Elemental Edges

Mohawk Group’s innovative flooring solutions offer customers a simple specifying experience with different products working together for one purpose. Complete your project with ease with coordinated products and colors across our full portfolio of soft and resilient flooring, as well as finishing accessories.

## COORDINATED SOLUTIONS

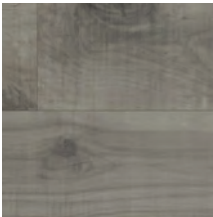
### TRANSITIONS

Choose from a variety of Elemental Edges design options for Transitions/Expansion Gaps that should be installed every 50’ in any direction with RevWood contract.\*



Elemental Edges  
063 Buff

+



Voxwood  
01 Skyline Maple



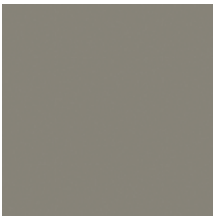
### ARCHITECTURAL WALL BASE

Elemental Edges Architectural Wall Base is an easy-to-order, sustainable solution to traditional millwork. The wide variety of design options, sizes, and running line colors allow you to easily coordinate your project finishes with your Mohawk Group flooring selections.



Voxwood  
01 Skyline Maple

+



Architectural Wall Base  
846 Greige



RevWood Contract requires a 3/8" expansion gap around the perimeter, so the Quarter Round profile would be required in addition to selected AWB profile.

\*Refer to RevWood Contract Installation Instructions for more information.





# Elemental Edges

FINISHING ACCESSORIES



At Mohawk Group we believe in providing project solutions that are easy to select and readily available. Elemental Edges is a complete portfolio of free-to-ship accessories for all your flooring installation and finishing needs. The program is offered in 14 QuickShip colors that coordinate perfectly with our full suite of soft and hard surface products.

Explore more by visiting [mohawkgroup.com/products/elemental-edges](https://mohawkgroup.com/products/elemental-edges)



## Wall Base



Seamlessly coordinate your wall base and Mohawk Group floor covering from our variety of QuickShip wall base offerings.

### AVAILABLE IN

- Rubber
- Vinyl
- 4" or 6" in height
- Coved or straight
- 4' lengths or 96' & 120' rolls
- 1/8" gauge
- .080" gauge (4" Cove vinyl)



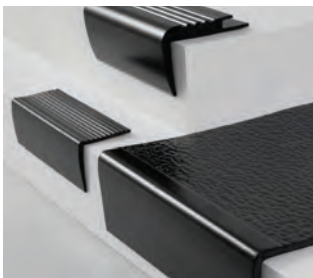
## Installation Accessories



Add a functional finishing touch to your coordinated color scheme with Mohawk Group installation accessories. Proprietary Rubber formulations are shrink and crack-proof, and won't fade, even in direct sunlight.

### CHOOSE FROM

- Universal Transitions
- Adaptors
- Reducers
- Cove Stick



## Stair Solutions



Specify 12.5" regular tread or 20" integrated tread/riser, available in 48" and 72" lengths. Round and hammered finishes are available with standard square nose. All profiles are available with or without visually impaired strips.

### CHOOSE FROM

- Stair Treads
- Risers
- Resilient Landing Tiles
- Nosings



## Architectural Wall Base

Complement your space with the rich detail of Elemental Edges Architectural Wall Base, offered in a variety of designs, sizes and running line colors. Superior performance and durability allowing your project finishes to remain remarkable.

### AVAILABLE IN

- 8 design profiles
- 14 color-coordinated options



# Specifications

Voxwood (C0182)

DESIGN

Product Type	RevWood Contract
Size	7.5" x 54.33"
Overall Thickness	9.5 mm
Finish	AC4 Rated Wear Layer with Aluminum Oxide
Edge Profile	Pressed Bevel
Emboss	EIR
Colors Available	11
Packaging	
Pieces per carton	10 pcs/ctn
Square Feet Per Carton	28.22 sq.ft/ctn

\*For detailed warranty, adhesive and installation information visit [mohawkgroup.com](http://mohawkgroup.com)

PERFORMANCE

Construction	Light Commercial Laminated Wood
Installation	Floating / Click with Uniclic® Locking System
Critical Radiant Flux	ASTM E648 - Class 1
Smoke Density	ASTM E662 – Less than 450
Static Load	3.1 NALFA ≥ 1160 PSI
Thickness Swell	3.2 NALFA ≤ 12%
Xenon Light Resistance	3.3 NALFA No More Than Slight
Cleanability-Stain Resistance	3.4 NALFA No More Than Slight Effect
Large Ball Impact Resistance	3.5 NALFA > 1400 mm
Small Ball (Dart) Impact Resistance	3.6 NALFA > 500 mm
Wear Resistance	3.7 NALFA ≥ 6000 Cycles
Dimensional Tolerance Measurements	3.8 NALFA Class 4
Chair Resistance	3.9 NALFA No Effect 35,000 Cycles
Surface Bond of Laminate Flooring	3.10 NALFA 1.5N/mm2

SUSTAINABILITY

Certification	FloorScore® Certified Lacy Act Compliant TSCA Title VI Compliant 75% Post Industrial, Pre-Consumer Recycled Content ECO-Certified: Locally Sourced Fiber Recycled, Recovered or Post-Consumer Content Sustainable Use of Wood Fiber Responsible Wood Sourcing
Manufacturing Location	Made in the USA

SERVICE

Warranty	10-Year Light Commercial Warranty
----------	-----------------------------------



