



Restorative Insights

Collective Structure Collective Harmony Collective Balance



Restorative Insights

Broadloom carpet plays a special role in the built environment, as it brings a sense of warmth and comfort to a space, grounding us with a sense of belonging. The Restorative Insights broadloom carpet collection offers three styles of textural patterns that were inspired by knit stitches, and how these can represent community and bring people together in communal spaces. This common thread of stitched yarn is a rich metaphor for a sense of kinship that we humans have with each other and a sense of place. The collection contributes to spaces that restore people, reconnecting them with a shared purpose to tell their stories, honor each other and hold community values close.

Learn more at mohawkgroup.com



Cover: Collective Structure, 575 Twilight
Rugged Foundation, 940 New Clay



Collective Harmony 957 Mysterious, Collective Structure 957 Mysterious, Collective Balance 575 Twilight



Digital Lookbook

Explore more design ideas for your spaces with our segment-focused digital look books. Scan this QR code to view our Senior Living Lookbook.



Collective Structure 957 Mysterious



Collective Harmony 957 Mysterious

Hospitality Lookbook



Collective Balance 575 Twilight





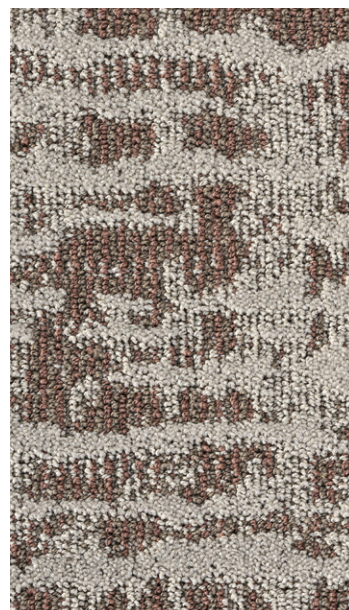
Restorative Insights COLORWAYS



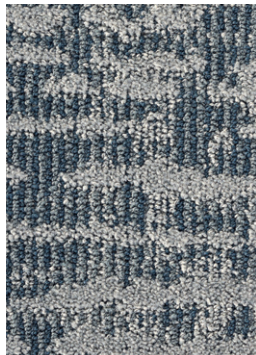
Collective Structure
449 Desert Shadows



Collective Harmony
449 Desert Shadows



Collective Balance
449 Desert Shadows



Collective Balance
545 Winter Solstice



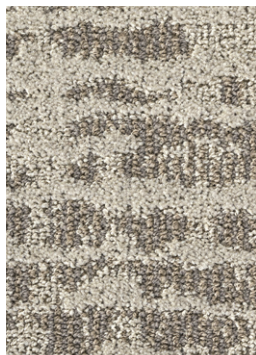
Collective Balance
575 Twilight



Collective Balance
637 Garden Path



Collective Balance
737 Natural Linen



Collective Balance
739 Potters Clay



Collective Balance
747 Jute



Collective Balance
939 Silver Lining



Collective Balance
957 Mysterious

Beyond Carbon Neutral



2022

All products carbon neutral

PLUS an additional 5% carbon offset for a net-positive impact on the climate

2040

Net zero carbon emissions

We've signed The Climate Pledge to be net zero in emissions by 2040 and have already started major changes to reduce our carbon footprint.

Neutral is not enough.

With our holistic improvement of the life cycle of our flooring products — from full product transparency, to reduced water usage in manufacturing, to carbon neutrality and beyond — better is just the beginning.

THE
CLIMATE
PLEDGE



Better for our world means doing more to stop and reverse climate change.



Personal Studio

FLOORING PERSONALIZED BY YOU

Introducing Personal Studio (p.s.), our innovative design personalization tool that allows you to put your own flair to our running line products, so you can make designs as unique as your project.

p.s. was developed to provide you with a tool that will allow you to streamline your efforts and respond quickly.



Visualize In A Room

You can personalize the color in any Restorative Insights pattern, visualize it in a room scene, and order digital, print or physical samples easily.

Discover hundreds of additional patterns that you can personalize with your favorite Restorative Insights colorways to coordinate across your project.

Photorealistic Simulations

Personal Studio uses photorealistic simulations of the cut and loop textures of our PDI Synthesis bases and our CYP, Definity and tufted constructions so your designs are very close to the final product.

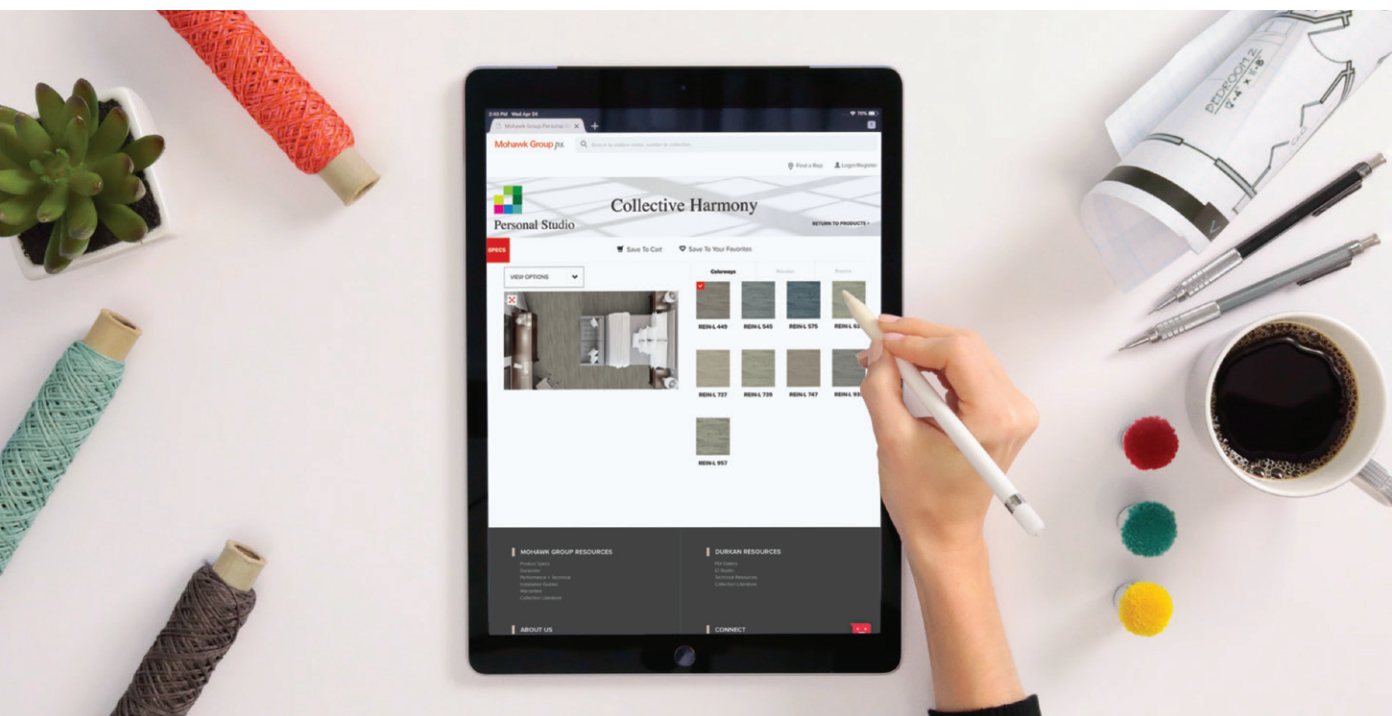
Find The Perfect Color

You can quickly iterate through multiple colorways and patterns to find the perfect fit for your project.

Multiple Projects

Save your favorite personalized products per project, and easily switch between them in an easy interface.

Explore: <https://ps.mohawkgroup.com/>



Specifications

Collective Structure (BC638)
Collective Harmony (BC639)
Collective Balance (BC640)

DESIGN

Size	12' width (3.66 m)
Pattern Repeat	Collective Structure 36"W x 72"L Collective Harmony 36"W x 86.4"L Collective Balance 36"W x 72"L
Surface Appearance	Textured Pattern Cut & Loop
Fiber Type	Colorstrand® SD Nylon
Dye Method	Solution Dyed
Colors Available	
Collective Structure	9
Collective Harmony	9
Collective Balance	9

PERFORMANCE

Construction	Tufted
Gauge	1/12" (47.00 rows per 10cm)
Stain Release Technology	EcoSentry Plus Stain Protection
Soil Release Technology	EcoSentry Soil Protection
Backing Material	Weldlok®
Flammability	ASTM E 648 - Class 1 (Glue Down)
Smoke Density	ASTM E 662 - Less than 450
Static Propensity	AATCC - 134 Under 3.5 KV

SUSTAINABILITY

Certification	Declare Red List Free
Indoor Air Quality	Green Label Plus Certified #8216
NSF 140	Gold
Carbon	Net-Positive Carbon (Neutral +5%)

SERVICE

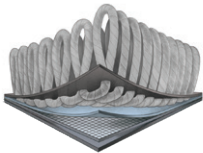
Warranties	Lifetime Limited Wear Warranty, Lifetime Limited Colorfastness to Light, 10 Year Limited Colorfastness to Atmospheric Contaminants, 10 Year Stain Warranty, Lifetime Static
------------	---

Upgrade Your Performance

+OnGuard

(133 SY min)

Revolutionary moisture barrier enhancement with an integrated layer that prevents moisture from getting beneath the carpet backing.



- Passes BST & 10,000 impact testing



- Creates a completely seamless, waterproof installation*



- No moisture testing required with NuBroadlok VRT*

Mohawk Group warrants its adhesives for the life of the original installation only when a Mohawk Group style (product) is installed. Mohawk's floor preparation procedures must be followed to ensure that the substrate has been prepared properly. Failure to use Mohawk Group adhesives or to follow Mohawk's floor preparation procedures will void all lifetime adhesive warranties. Please contact your local Sales Representative for installation guidelines.

These patterns contain inherent characteristics which may result in pattern run off and/or pattern appearance variations at the seams or tile edges (darker or lighter pattern lines). These characteristics are inherent in the patterns and are not manufacturing defects. Consideration to these characteristics should be given when selecting an installation method.

Chair pads are recommended under office chairs with roller casters to preserve appearance retention, act as a deterrent toward delamination and to prevent premature or accelerated wear. Walk-off tiles from the Tuff Stuff II Collection are recommended at entryways to reduce soiling.

Mohawk Group is providing this architect folder for the purpose of promoting our commercial business. This folder and its samples shall remain the property of Mohawk Group. Color may vary from dye lot to dye lot. Substitution of material may be made due to improved technology, supply limitations or other factors. The performance of this product is not affected by such variations.

For current and complete specifications please visit www.mohawkgroup.com

recover
 carpet recycling program
 877-3RE-CYCL



♻️ Produced with recycled materials



Mohawk Group

Mohawk Group
160 South Industrial Blvd.
Calhoun, GA. 30701
800.554.6637
mohawkgroup.com

MG755 12PG BROCHR LT