



Residence Collection

LVT | Broadloom



Residence Collection



The Residence Collection by Mohawk Group brings together versatile soft and hard surface options, crafted to elevate every room with both beauty and functionality. Thoughtfully designed to harmonize comfort with performance, this collection creates inviting, enduring spaces that transform any environment into a place of lasting elegance and warmth.

Shenandoah Valley

- 1. 212 Sherwood
- 2. 219 Montpelier
- 3. 821 Monticello

Laurel Path

- 4. 731 Fame

Quarto Ponte

- 5. 810 Distant Thunder

Croft Manor

- 6. 749 Parchment

Suburbia

- 7. 711 Swan

Crestmont Ave

- 8. 849 Sand Pebble



Learn more at mohawkgroup.com

Cover:
Alnwick Castle 942 Perimeter Wall
Elan Valley II 2.5 232 Daybreak





Elan Valley II

Elan Valley II | Elan Valley II Plus | Elan Valley II 2.5 | 5.0

The Elan Valley LVT collection evokes the serene beauty of the Welsh countryside, infusing your space with the tranquil charm of lush landscapes and quiet mornings. Available in a range of wear layers and thicknesses, this collection ensures both durability and versatility.

COLORWAYS



Elan Valley II 2.5 868 Dagny

Shenandoah Valley

Immerse yourself in the timeless allure of our Shenandoah Valley LVT collection, inspired by the enchanting Shenandoah Valley. Renowned for its lush landscapes and unparalleled beauty, this region serves as the perfect muse for a collection that captures the essence of winding trees and scenic vistas, blending nature and history seamlessly.

COLORWAYS



Shenandoah Valley 207 Berkeley



Broadloom Performance



The Residence Collection includes a wide variety of broadloom options, designed for both beauty and performance. Featuring EverStrand, SmartStrand, and ColorStrand, this collection offers optimal comfort, durability, and vibrant color retention. Elevate any room with versatile broadloom that combines eco-conscious design and lasting elegance.



PERFORMANCE

Made from the highest quality PET fibers, EverStrand is durable and long-lasting.

EASY TO CLEAN

Quick and easy cleanup with inherently stain-resistant fiber plus EasyClean™ spill and soil protection for carpet that stays clean for years to come.

SUSTAINABILITY

High-quality PET fiber made with recycled bottles using our patented Continuum process, helping to keep plastic waste out of our waterways and landfills.

SmartStrand

PERFORMANCE

SmartStrand carpet fiber provides 0% moisture absorption. This unique fiber has no dye sites means the carpet will never lose the built-in stain protection.

EASY TO CLEAN

SmartStrand offers spill and soil protection and permanent stain resistance.

SUSTAINABILITY

Carpet fiber is made in part from renewable plant-based ingredients.



PERFORMANCE

ColorStrand has unsurpassed colorfastness to light, atmospheric contaminants, and harsh cleaning agents. Our Sentry Plus Soil® and Stain Protector keeps your investment looking newer longer.

EASY TO CLEAN

ColorStrand carpet fiber will resist permanent stains caused by spills of all conventional acid-based substances.

SUSTAINABILITY

ColorStrand is 25% certified Pre-Consumer Recycled Content* (third party certified by Underwriters Laboratory®) and CRI Green Label Plus® certified for VOC emissions. Recyclable through Mohawk's ReCover Program and contains 30% certified recycled content.

Quarto Ponte

Quarto Ponte introduces a soft, textural pattern that will energize its environment while still promoting warmth and softness. A palette of four neutral hues that can be mixed and matched easily with our LVT offering.

COLORWAYS



742 Basketry



810 Distant Thunder



817 Truffle



839 Manatee



Quarto Ponte 817 Truffle



Alnwick Castle

Alnwick Castle features the soft tonal colors that delivers versatility and functionality for today's design trends.

COLORWAYS



945 Armor



829 Flask



942 Perimeter Wall



Alnwick Castle 942 Perimeter Wall

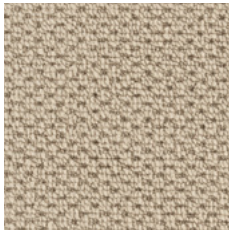
Croft Manor

Croft Manor features four visuals in neutral palettes that can be mixed and matched easily with any LVT selection and colorway.

COLORWAYS



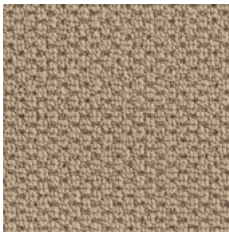
749 Parchment



731 Linen



829 Pewter



773 Brick



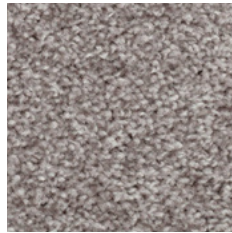
Croft Manor 829 Pewter, Elan Valley II 5.0 838 Dusk



Mill Avenue

The soft colors in Mill Avenue help create a calming environment for a variety of settings.

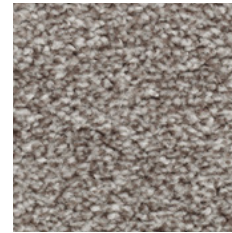
COLORWAYS



947 Silverado



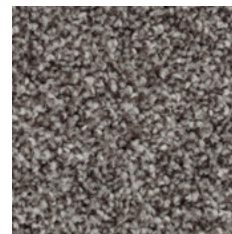
746 Twine



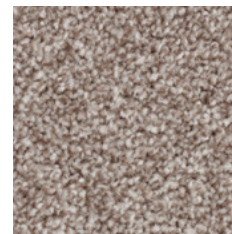
978 Tradewind



829 Ancestral



976 Eclipse



838 Mystic

BLEND OF
everSTRAND 
SmartStrand 



Mill Avenue 978 Tradewind, Shenandoah Valley 212 Sherwood

Tucker's Point

Tucker's Point is all about the texture. It creates a natural warmth by mimicking the texture of a favorite sweater or crocheted blanket. The soft colors in Tucker's Point create a calming environment for a variety of settings that need a touch of gentle distinction.

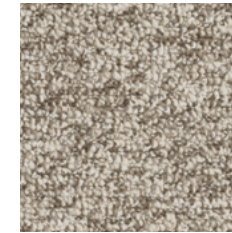
COLORWAYS



800 Wrangler



729 Serenity



759 Outback



911 Forest Twilight



816 Kodiak



944 Notion

everSTRAND 



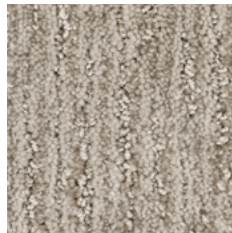
Tucker's Point 944 Notion



Crestmont Avenue

Crestmont Avenue offers freedom of form and different opportunities to design your space based on your vision.

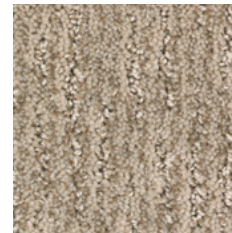
COLORWAYS



829 Pale Taupe



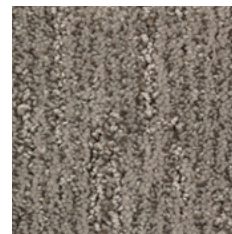
849 Sand Pebble



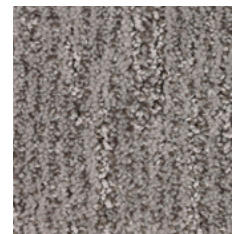
828 Yearling



939 River Rocks



879 Patina



969 Urban Sunrise



Crestmont Avenue 849 Sand Pebble, Elan Valley II 5.0 838 Dusk

North Station I, II, III

North Station is the epitome of plush. Its lush appearance draws you in and feels like home. Featuring eight velvety, neutral colors that deliver versatility and functionality for today's design trends. North Station is available in three weights suited for a multitude of spaces.

COLORWAYS



730 Moon Glow



731 Rococo Beige



816 Cappuccino



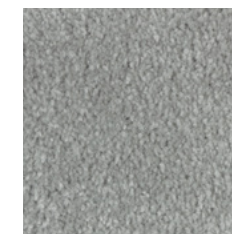
768 Antique Light



769 Wool Socks



864 Spiced Tea



948 Silver Spoon



840 Teak



North Station 768 Antique Light



Suburbia

Suburbia features six visuals that can be mixed and matched easily with any LVT selection and colorway.

COLORWAYS



711 Swan



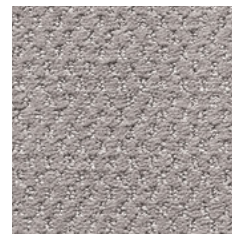
732 Bamboo Buff



718 Mushroom Cap



772 French Toast



959 Putty Gray



979 Ancient Marble



Suburbia 772 French Toast, Shenandoah Valley 838 Ash Lawn

Laurel Path

Laurel Path touts a soft, textural pattern that will vitalize its environment while still nurturing warmth and softness. A palette of six versatile colors mixes easily with any LVT.

COLORWAYS



141 Crown



711 Proud



731 Fame



858 Dignity



945 Honor



948 Grecian



Laurel Path 945 Honor



Living Quarters II

Living Quarters offers freedom of form and different opportunities to design your space based on your vision.

COLORWAYS



821 Polished Tan



819 Shimmer



852 Sumatra Blend



962 Winter Twill



859 Twilight Jungle



984 Stoney

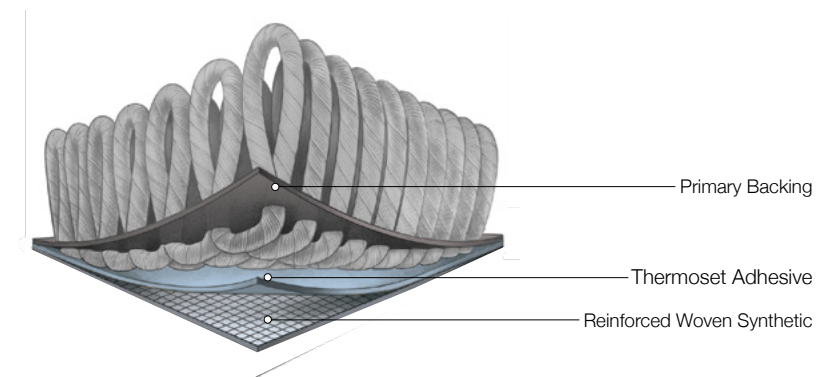
SmartStrand.



Living Quarters II 852 Sumatra Blend

Weldlok® COST EFFECTIVE STANDARD PERFORMANCE

Weldlok® is the Mohawk Group's standard broadloom backing system specifically designed for commercial applications. The Weldlok® backing is laminated to our products utilizing a commercial thermoset adhesive. This adhesive is designed to encapsulate and penetrate the carpet back stitch in the main application coat, while the second application coat secures the secondary backing to the carpet substrate for a cost effective performance standard.



Elemental Edges WALL BASE

At Mohawk Group we believe in providing project solutions that are easy to select and readily available. Elemental Edges is a portfolio of architectural and cove wall base for your finishing needs. Featuring a range of colors that coordinate with our full product line, the collection also offers 14 stocked colors in cove wall base.





Specifications

Elan Valley II 2.5mm (C2105)
Elan Valley II 5.0mm (C2106)
Shenandoah Valley (C2109)

Elan Valley II (C2093)
Elan Valley II Plus (C2094)

DESIGN

Product Type	Luxury Vinyl Tile
Overall Thickness	
Elan Valley II, Elan Valley II Plus	2.0 mm 2.5mm 5.0mm
Shenandoah Valley	4.5mm
Wear Layer	
Elan Valley II (2.0mm)	6 mil (0.15mm)
Elan Valley II Plus (2.0mm)	12 mil (0.3mm)
Elan Valley II (2.5mm 5.0mm)	20 mil (0.5mm)
Shenandoah Valley	12 mil (0.3mm)
Finish	Enhanced Urethane
Colors	8
Size	
Elan Valley II, Elan Valley II Plus (2.0mm)	6" x 48"
Elan Valley II (2.5mm 5.0mm)	7.25" x 48"
Shenandoah Valley Actual	7.13" x 48.03"
Shenandoah Valley Nominal	7" x 48"
Emboss	Overall
Bevel	
Elan Valley II, Elan Valley II Plus	Straight Edge
Shenandoah Valley	Micro Bevel
Installation & Adhesive	
Elan Valley II, Elan Valley II Plus	Glue Down M95.0, M99, Totalbond, MS160 or M700 Plus
Shenandoah Valley	Click
Packaging	
2.0mm	27 pcs per carton / 54 sq ft per carton
2.5mm	24 pcs per carton / 58 sq ft per carton
5.0mm	10 pcs per carton / 24.2 sq ft per carton

PERFORMANCE

Construction	Commercial Flexible Luxury Vinyl Tile
Classification	ASTM F1700 - Class III, Type B - Embossed
Squareness	ASTM F2421 - Passes - ±0.10" max
Size and Tolerance	ASTM F2421 - Passes - ±0.016"/linear foot
Thickness	ASTM F386 - Passes, as specified ± .005"
Flexibility	ASTM F137 - Passes - 1" mandrel
Dimensional Stability	ASTM F2199 - Passes - 0.020"/linear foot max
Static Load Limit	ASTM F970 - Passes, modified at 1000 psi
Residual Indentation	ASTM F1914 - Passes, Avg less than 8%, Max Single Reading 10%
Resistance to Chemicals	ASTM F925 - Passes - No more than a slight change
Resistance to Light	ASTM F1515 - Passes, ΔE ≤ 8
Resistance to Heat	ASTM F1514 - Passes, ΔE ≤ 8
Critical Radiant Flux	ASTM E648 - Class 1 (>0.45 W/cm2)
Smoke Density	ASTM E662 - Meets, 450 or less

SUSTAINABILITY

Certification	FloorScore® Certified
Carbon	Net-Positive Carbon (Neutral +5%)

SERVICE

Warranties	
Elan Valley II	N/A
Elan Valley II Plus	Limited 6 Year Light Commercial Warranty
Elan Valley II 2.5 and 5.0, Shenandoah Valley	Limited 10 Year Light Commercial Warranty

For detailed adhesive, installation, and warranty information visit mohawkgroup.com



Specifications

Alnwick Castle SLC50 | SLH50, Croft Manor SLC51 | SLH51, Mill Avenue SLC41 | SLH41, Suburbia SLC27 | SLH27, Crestmont Avenue SLC39 | SLH39, Quarto Ponte SLC53 | SLH53, Tucker's Point SLC91 | SLH91, North Station I SLC92 | SLH92, Laurel Path SLC34, North Station II SLC93 | SLH93, North Station III SLC94 | SLH94, Living Quarters II SLC97

DESIGN

Size	12' width (3.66m)
Surface Appearance	
Alnwick Castle	Textured Patterned Tip Shear
Croft Manor	Rich Texture Loop
Mill Avenue, Suburbia	Level Cut & Loop
Crestmont Avenue	Level Patterned Cut & Loop
Quarto Ponte	Textured Patterned Cut & Loop
Tucker's Point	Textured Multi-Colored Loop
Laurel Path	Patterned Tip Shear
North Station I, II, III, Living Quarters II	Cut Pile
Fiber Type	
Alnwick Castle, Croft Manor, Tucker's Point	Everstrand® SD
Mill Avenue	50% SmartStrand® / 50% Everstrand®
Suburbia, Crestmont Avenue, Quarto Ponte	Everstrand®
Laurel Path, Living Quarters II	ColorstrandSD Nylon
North Station I, II, III	100% SmartStrand®
Dye Method	
Alnwick Castle, Laurel Path, Croft Manor, Tucker's Point	Solution Dyed
Mill Avenue, Suburbia, Crestmont Avenue, Quarto Ponte, North Station I, II, III, Living Quarters II	Piece Dyed
Colors Available	
Alnwick Castle	3
Croft Manor, Quarto Ponte	4
Mill Avenue, Suburbia, Crestmont Avenue, Laurel Path, Living Quarters II	6
North Station I, II, III	8

PERFORMANCE

Construction	Tufted
Gauge	
Mill Avenue, Suburbia, Crestmont Avenue, North Station I, II, III	1/8 (31.50 rows per 10 cm)
Laurel Path	1/12 (47.00 rows per 10 cm)
Alnwick Castle, Croft Manor, Quarto Ponte	5/32 (25.2 rows per 10 cm)
Tucker's Point, Living Quarters II	

Soil Release Technology	EcoSentry Soil Protection
Backing Material	Weldlok®

SUSTAINABILITY

Certification	Declare Red List Free
Indoor Air Quality	Green Label Plus Certified

SERVICE

Warranties	Lifetime Limited Wear Warranty, Lifetime Static
------------	---



