



Pathmakers

Pollinator Path Concrete Bloom



Pathmakers

How can design nurture a culture of care? To begin answering this question, we looked deeply into the world around us, discovering and exploring the systems of care we found in nature.

With Pathmakers, we drew inspiration from bees, whose paths of pollination help sustain all life. Influenced by hive structures and the daily journeys of bees, Pathmakers carpet planks are designed to support multifaceted communities, utilizing materials and methods that do more to care for our planet.

The collection creates nurturing paths of connection between people, the built environment and our natural world. For the two styles in this book, Concrete Bloom and Pollinator Path, we look to beehives to help us build a culture of care in active spaces.



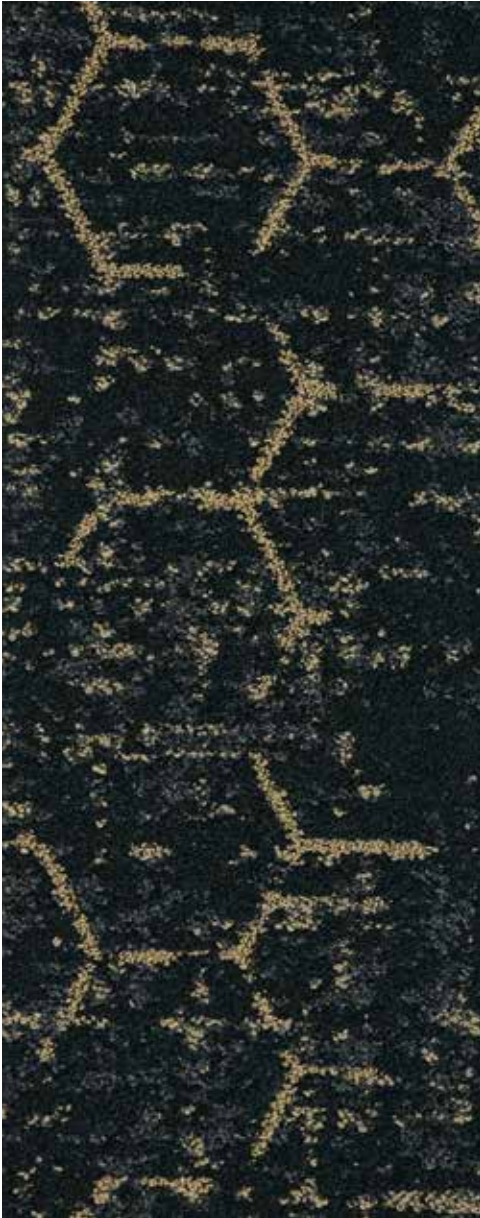
Learn more at mohawkgroup.com

Cover:
Pollinator Path, 739 Birdsong Light, Concrete
Bloom, 739 Birdsong Light, Vertical Ashlar





Pollinator Path, 739 Birdsong Light
Vertical Ashlar



Pollinator Path

Pollinator Path echoes the natural variation of cells within a bee hive, layering subtle, hexagonal linework at multiple scales.

Use the two Pathmakers styles individually or together to create a mix of dynamic depth and structure across the floor.





Pollinator Path, 981 Nocturnal Gold
Vertical Ashlar



Concrete Bloom, 981 Nocturnal Gold
Vertical Ashlar



Concrete Bloom

An exploration of the varied surfaces of beehives, Concrete Bloom is inspired by the bark-like visual we discovered on a hive's exterior. Across the floor, the richly detailed, organic movement hints at a bustling interaction of perspectives.



Colorways

The Pathmakers collection features two styles, Concrete Bloom and Pollinator Path, with coordinating color palettes that can be used individually or together.



Pollinator Path 981 Nocturnal Gold



Concrete Bloom 981 Nocturnal Gold

Pollinator Path



729 Serene Light



927 Serene Dark



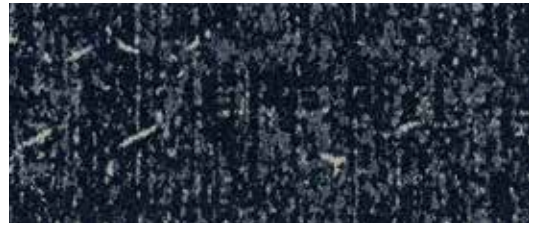
739 Birdsong Light



938 Birdsong Dark



745 Dewdrop Light



565 Dewdrop Dark



859 Oud Light



978 Oud Dark



829 Wildwood Light



868 Wildwood Dark



989 Nocturnal Light



987 Nocturnal Silver



Better for People and Planet

Our future depends on the work we do today. At Mohawk Group, commitment to our planet extends beyond just products and processes: it's how we challenge ourselves to do and be better every day, how we make decisions, how we reinvest in our people and our planet, and how we define what matters most as we work to deliver value for generations to come.



**better
for
people**

Human Health

**Declare Red List Free
Health Product Declaration
Green Label Plus Certification**

Mohawk Group is proud to provide products free of Red List chemicals with verified documentation of their impact throughout the lifecycle, with Green Label Plus certification for better indoor air quality.



**better
for the
planet**

Climate Health

**UL Certified EPD
Living Product Challenge Petal Certified**

Beyond Carbon Neutral

Carbon neutral PLUS an additional 5% carbon offset for a net-positive impact on the environment.

Net Zero Carbon Emissions by 2040

We've signed The Climate Pledge to be net zero by 2040 and have already started major changes to reduce our carbon footprint.

Circular Economy

End of Life Options

Salvageable/Reusable in its Entirety
Take Back Program (ReCover)

Ecosystem Health

Neutral Is Not Enough

With the holistic improvement of the lifecycle of our flooring products – from full product transparency, to reduced water usage in manufacturing, to carbon neutrality and beyond – better is just the beginning.

Water Positive

Mohawk Group balances all water on its Living Product Challenge Petal Certified carpet tiles by 105% for a net-positive impact on our waterways.





EcoFlex™ ONE

ALL-IN-ONE FLOORING SOLUTION

Every element in the EcoFlex™ ONE construction has purpose, and combined they form the industry's leading modular carpet solution. The hydrophobic PET cushion, backing layers, and Duracolor Tricolor fiber are engineered with your end-goals in mind: to optimize your investment, be sustainably made, and provide a better occupant experience.

KEY FEATURES

- Better Acoustics
- Enhanced Comfort
- Worry-Free Installation
- Simplified Maintenance
- NSF 140 Platinum
- Carbon Neutral +5%
- Limited Lifetime Warranty

EcoFlex™ ONE is a unified solution to the wide range of needs in your spaces. This advanced backing system improves every aspect of comfort and acoustics while eliminating moisture testing—all with a lighter environmental footprint that is carbon neutral plus an additional 5% offset. Tested and proven, EcoFlex™ ONE is the holistic solution for human-centric environments.



Duracolor® Tricolor solution dyed nylon delivers unsurpassed stain resistance, colorfastness, durability, color clarity, and enhanced soil performance.

Soil Control

Optimal soil hiding, soil removal, and color clarity, due to its unique shape and triangular hollow core.

Stain Resistance

Utilizes a patented process for permanent built-in stain resistance that won't wash or wear off.

Performance

Unsurpassed colorfastness to light and atmospheric contaminants, so colors won't fade.

Durability

Unique fiber shape and core resist crushing, for carpet with enhanced durability and a longer life cycle.

Sustainability

Declare Red List Free and made with a minimum of 70% recycled content.



Culture of Care

At Mohawk Group, our goal is to use design to nurture a culture of care. Inspired by pollinators, the Pathmakers Collection connects people to the ways of nature, while working to protect and nurture our natural world.



Specifications

Concrete Bloom (GT363)
Pollinator Path (GT362)

DESIGN

Size	12" x 36"
Surface Appearance	Textured, Patterned Multi-Color Loop
Fiber Type	Duracolor® Tricolor Premium Nylon
Dye Method	Solution Dyed
Colors Available	13

PERFORMANCE

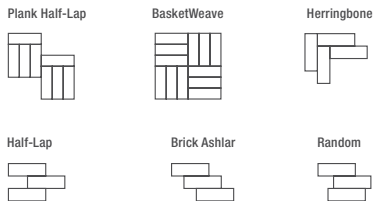
Construction	Tufted
Gauge	1/12" (47.00 rows per 10cm)
Tufted Weight	22 oz/yd ²
Stain Release Technology	Permanent, Built into the Fiber
Soil Release Technology	EcoSentry Soil Protection
Backing Material	EcoFlex™ ONE
Flammability	ASTM E 648 - Class 1 (Glue Down)
Smoke Density	ASTM E 662 - Less than 450
Static Propensity	AATCC - 134 Under 3.5 KV

SUSTAINABILITY

Certification	Living Product Challenge Petal Certified; Declare Red List Free
Indoor Air Quality	Green Label Plus Certified #1171
NSF 140	Platinum
Carbon	Net Positive Carbon (Neutral +5%)
Water	Net Positive Water (Neutral +5%)

SERVICE

Warranties	Lifetime Limited Carpet Tile Warranty, Lifetime Limited Duracolor® Stain Warranty, Lifetime Static
------------	--



Mohawk Group warrants its adhesives for the life of the original installation only when a Mohawk Group style (product) is installed. Mohawk's floor preparation procedures must be followed to ensure that the substrate has been prepared properly. Failure to use Mohawk Group adhesives or to follow Mohawk's floor preparation procedures will void all lifetime adhesive warranties. Please contact your local Sales Representative for installation guidelines.

These patterns contain inherent characteristics which may result in pattern run off and/or pattern appearance variations at the seams or tile edges (darker or lighter pattern lines). These characteristics are inherent in the patterns and are not manufacturing defects. Consideration to these characteristics should be given when selecting an installation method.

Chair pads are recommended under office chairs with roller casters to preserve appearance retention, act as a deterrent toward delamination and to prevent premature or accelerated wear. Walk-off tiles from the Tuff Stuff II Collection are recommended at entryways to reduce soiling.

Mohawk Group is providing this architect folder for the purpose of promoting our commercial business. This folder and its samples shall remain the property of Mohawk Group. Color may vary from dye lot to dye lot. Substitution of material may be made due to improved technology, supply limitations or other factors. The performance of this product is not affected by such variations.

For current and complete specifications please visit www.mohawkgroup.com

RECOVER
 RECYCLING PROGRAM
 877-3RE-CYCL



Produced with recycled materials

