

# TURF



**HERO**  
**TURF**

# TURF TALES

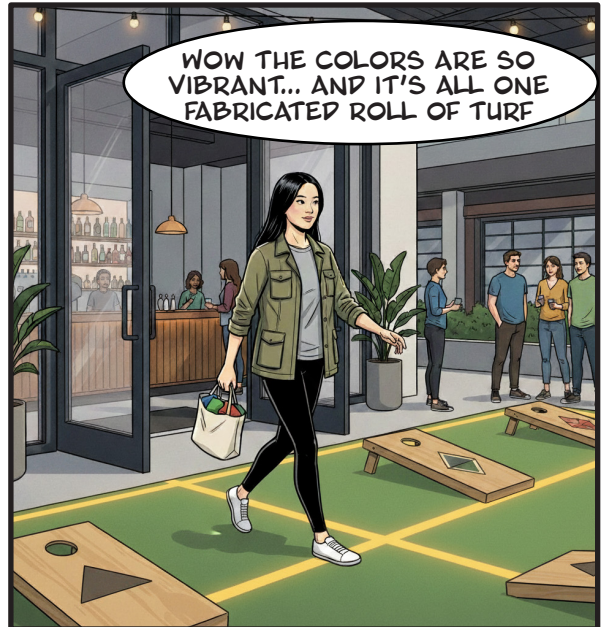


MOE (ON THE PHONE):  
I'D SAY USE HERO TURF  
FOR THIS AREA...

LOOKS LIKE  
IT COMES IN  
2 STYLES: HOME  
RUN AND GRAND  
SLAM. THEY ARE  
ESSENTIALLY THE  
SAME PRODUCT,  
GRAND SLAM JUST  
HAS CUSHION  
BACKING



LOOK OUTSIDE...  
WE FABRICATED THE  
TURF AREA  
THERE



WOW THE COLORS ARE SO  
VIBRANT... AND IT'S ALL ONE  
FABRICATED ROLL OF TURF



WOW, HERO TURF  
COMES IN  
8 COLORWAYS!

HERO  
TURF

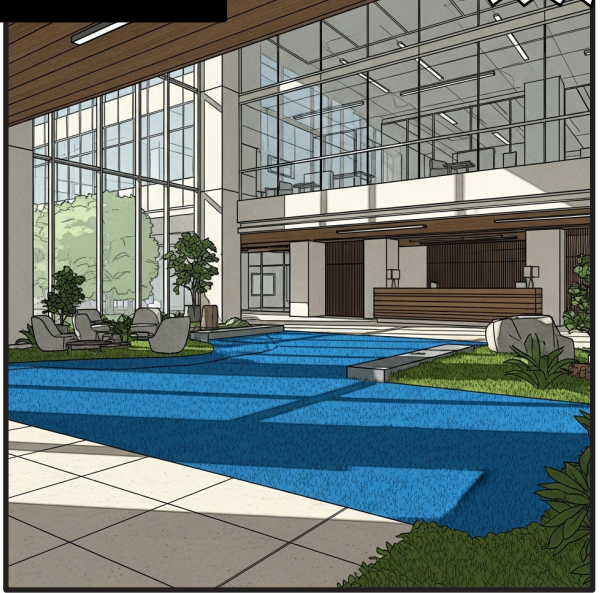


# APPLICATION

RETAIL



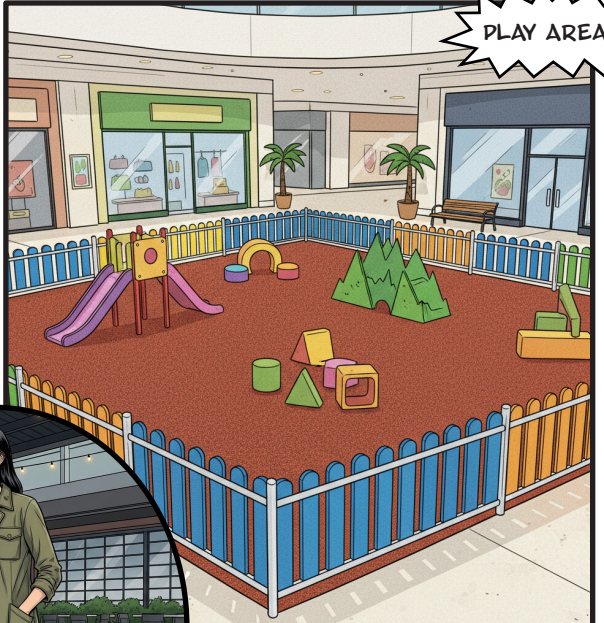
LOBBIES



SCHOOLS



PLAY AREAS



FABRICATED ROLLS!!



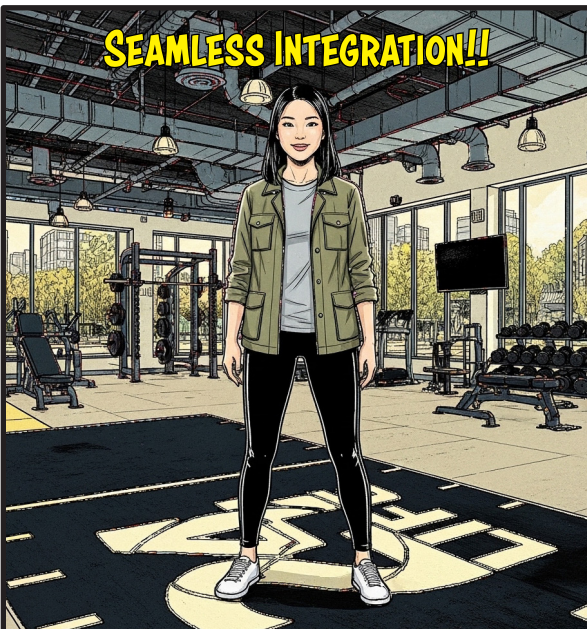
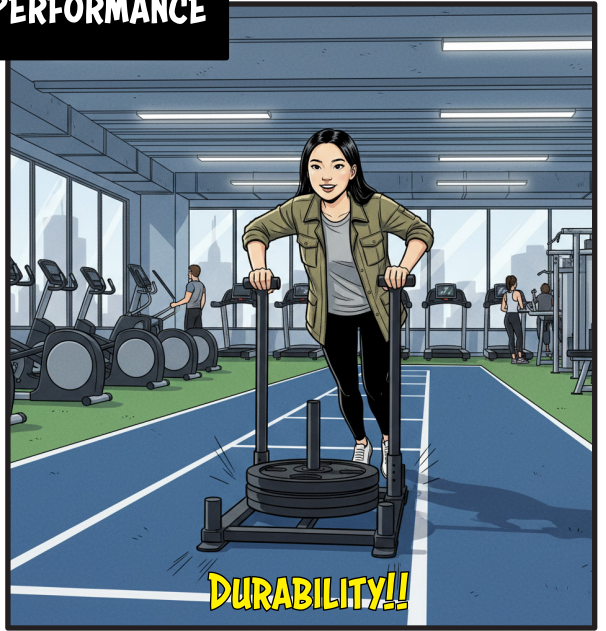
HERO TURF CAN BE USED INDOORS AND OUTDOORS, NEAT!



HOSPITALITY

**TO BE CONTINUED...**

**BETTER FOR PERFORMANCE**



## HERO TURF SUPPORTS BIOPHILIC DESIGN

### HOW TO INCORPORATE TURF FOR BIOPHILIC DESIGN

Through its texture, Hero Turf replicates grass, and is an indirect nature element that evokes outdoor landscapes. This can help create a visual and sensory impression of natural surface indoors, which aligns with biophilic goals.

Pair turf with large windows or skylights to bring in natural light.

Use turf areas near plant installations or planters to bridge the synthetic surface with living greenery.

Combine turf with natural materials (wood, stone, cork) elsewhere in the design.

Incorporate organic shapes and patterns in furniture and decor around the turf space.

TURF CAN ALSO BE  
USED TO PROMOTE  
BIOPHILIC DESIGN!



# CARE & MAINTENANCE



**EASY TO MAINTAIN!!**



# Specifications

## DESIGN

---

### Grand Slam with Cushion (C3601)

Product Type	Turf
Colorways	8
Construction	Tufted
Surface Appearance	Cut Pile
Fiber Type	Polyethylene
Width	15' (4.572m)
Adhesives	NuBroadlok®
UV Stabilized	Yes
Coating Type	5mm Polyurethane Cushion
Water Permeability	DIN18-035 >30 in/hr
Critical Radiant Flux	ASTM E648 Class II
Indoor Air Quality	CAL 1350 PASS

### Home Run (C3602)

Product Type	Turf
Colorways	8
Construction	Tufted
Surface Appearance	Cut Pile
Fiber Type	Polyethylene
Width	15' (4.572m)
Adhesives	NuBroadlok®
UV Stabilized	Yes
Coating Type	Polyurethane
Water Permeability	DIN18-035 >30 in/hr
Critical Radiant Flux	ASTM E648 Class II
Indoor Air Quality	CAL 1350 PASS

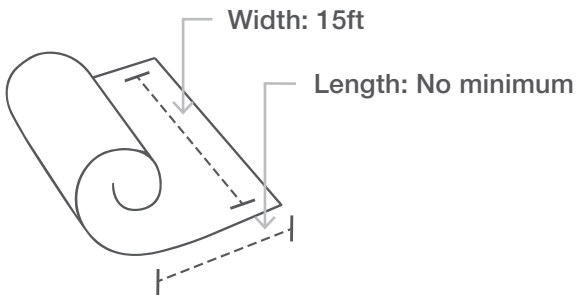
For detailed specification and installation information visit [mohawkgroup.com](http://mohawkgroup.com).

## SERVICE

---

Warranties 8 Year Commercial Warranty

For detailed warranty information visit [mohawkgroup.com](http://mohawkgroup.com)



**RECOVER**  
RECYCLING PROGRAM

Give your old flooring a second life with our award-winning ReCover Recycling Program. We will take away flooring made by any manufacturer, recycle it for you, and provide a certificate showing your positive impact on the planet.

**THE LATEST IN AUGMENTED REALITY TECHNOLOGY!!**

 **Mohawk GO**

USE AUGMENTED REALITY TO VISUALIZE PRODUCTS  
IN YOUR ROOM

CAPTURE PHOTOS AND VIDEOS TO SHARE

ORDER SAMPLES DIRECTLY FROM THE APP

ESTIMATE SQUARE FOOTAGE

DOWNLOAD THE APP TO EXPLORE ALL THE FEATURES!



Mohawk Group  
160 South Industrial Blvd.  
Calhoun, GA. 30701  
800.554.6637  
mohawkgroup.com

MG821 8PAG BROCHR LT

