

# AXIS

**HERO  
RUBBER**

MADE WITH



**NIKE GRIND**

MADE WITH 20%  
NIKE GRIND RUBBER



# THE DISCOVERY OF AXIS



# APPLICATION

RETAIL



LOBBIES



MUSEUMS



WORKPLACE



WATERJET CUT CAPABILITIES!!

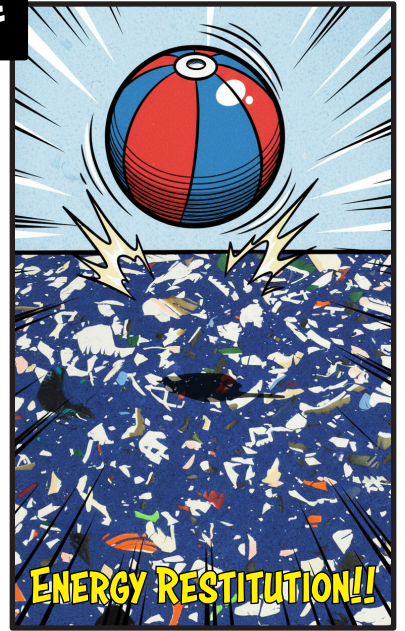


AXIS HAS BEEN USED EVERYWHERE!

RECREATIONAL AREAS

**TO BE CONTINUED...**

**BETTER FOR PERFORMANCE**



# NIKE GRIND STORY



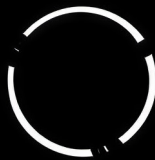
## STARTED BY NIKE. BORN FROM PERFORMANCE. REBUILT FOR PURPOSE.

In 1992, Nike Grind started as a grassroots initiative to recycle old shoes and has grown to become a large-scale global solution to transform manufacturing scrap and end-of-life shoes, into versatile, high-performance materials. Along with use in our own shoes and Nike Strength weights, our rubber, foam, leather, plastics and textiles get new life with the help of licensees in everything from cutting-edge consumer products to playgrounds and sports surfaces.



**MORE THAN 150 MILLION POUNDS OF NIKE GRIND  
RECYCLED INTO LICENSEES' PRODUCTS SINCE 1992.**

**ZERO TIRES. ZERO TIRE ODOR.**



# INSTALLATION & MAINTENANCE

**STRAIGHT EDGE**



**24"X24" & 48"X72"**

**8MM  
12MM  
THICKNESSES**

**INTERLOCKING**



**24"X24" & 48"X72"**

**8MM  
12MM  
THICKNESSES**

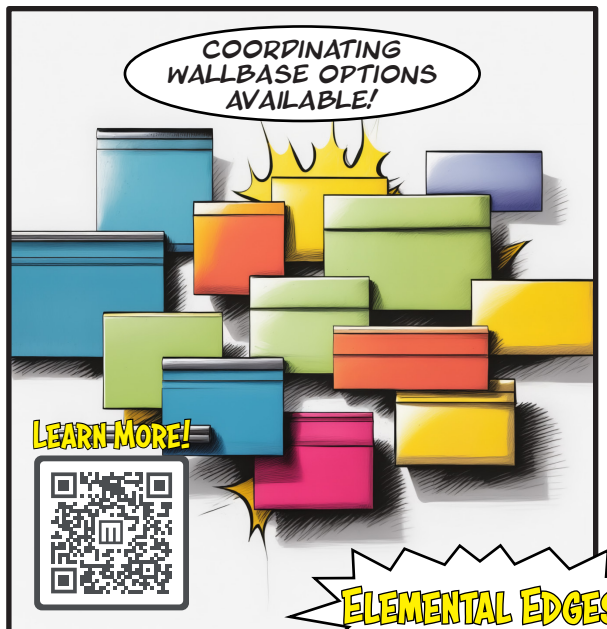


**LEARN MORE!**



**EASE OF MAINTENANCE!!**

**COORDINATING  
WALLBASE OPTIONS  
AVAILABLE!**



**LEARN MORE!**



**ELEMENTAL EDGES**

# Specifications

Axis Rubber 8mm (C3607)  
Axis Rubber 12mm (C3608)

## DESIGN

Product Type Rubber  
Overall Thickness 8mm, 12mm

Product	Nominal Size (Actual Size)	Sizes Available	Colorways Available	Glue Down	Loose Lay
Axis 8mm	24x24 (24"x24")	✓	17	✓	
	48x72 (48"x72")	✓	17	✓	
	24x24 Interlocking (23.88"x23.88")	✓	17	✓	✓
	48x72 Interlocking (46.75"x71.37")	✓	17	✓	✓
Axis 12mm	24x24 (24"x24")	✓	17	✓	
	48x72 (48"x72")	✓	17	✓	
	24x24 Interlocking (23.37"x23.37")	✓	17	✓	✓
	48x72 Interlocking (46.82"x71.37")	✓	17	✓	✓

For detailed adhesive and installation information visit [mohawkgroup.com](http://mohawkgroup.com).

## PERFORMANCE

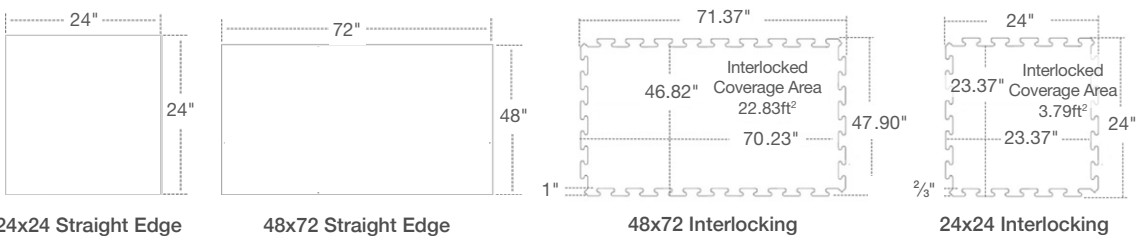
Construction Rubber  
 Breaking Load ASTM D412 65.91 lbs.  
 Elongation ASTM D412 75.83%  
 Tensile ASTM D412 271.8 lbs/sq. inch  
 Static Coefficient of Friction ASTM C1028 Dry 0.75; Wet 0.84  
 Hardness Shore A Durometer ASTM D2240 70  
 Density ASTM D3676 67.2 lbs/ft<sup>3</sup>  
 Static Load ASTM F970 0.029 inch residual compression

## SUSTAINABILITY

Certification FloorScore® Certified, Declare Red List Free, EPD available  
 Recycled Content 20% Nike Grind

## SERVICE

Warranties Limited 10 Year Commercial  
 For detailed warranty information visit [mohawkgroup.com](http://mohawkgroup.com)



**RECOVER**  
RECYCLING PROGRAM

Give your old flooring a second life with our award-winning ReCover Recycling Program. We will take away flooring made by any manufacturer, recycle it for you, and provide a certificate showing your positive impact on the planet.



**THE LATEST IN AUGMENTED REALITY TECHNOLOGY!!**

 **Mohawk GO**

USE AUGMENTED REALITY TO VISUALIZE PRODUCTS  
IN YOUR ROOM

CAPTURE PHOTOS AND VIDEOS TO SHARE

ORDER SAMPLES DIRECTLY FROM THE APP

ESTIMATE SQUARE FOOTAGE

DOWNLOAD THE APP TO EXPLORE ALL THE FEATURES!



Mohawk Group  
160 South Industrial Blvd.  
Calhoun, GA. 30701  
800.554.6637  
mohawkgroup.com

MG822 8PAG BROCHR LT

