



Mohawk Group

Mohawk Group
160 South Industrial Blvd.
Calhoun, GA. 30701
800.554.6637
mohawkgroup.com

MG767 16PG BROCHR LT

Healthy Environments

Calmness II Ephemeral II Juniperus II Sisalana II Therapeutic II



Healthy Environments

Healing within is often a matter of connecting to what’s outside of us. With Healthy Environments, we draw on our innate connection to the natural world in order to create spaces for healing. The collection is designed to comfort patients and their families with a soothing sense of natural forms and textures, while delivering the high performance and ease of cleaning that healthcare spaces require.

With a new range of styles and an expanded palette, the collection offers heterogeneous sheet patterns that support biophilic designs. The five styles include comforting wood plank visuals, textural designs evoking natural woven fibers, and a striated wood grain that strikes the perfect balance between organic and abstract.

As part of our Specify for the Cure® program, we donate to Susan G. Komen® when you specify from Healthy Environments. This allows you to broaden the positive impact that your project can have on people’s lives—because we believe that doing better means doing better together.

Learn more at mohawkgroup.com



Cover: Juniperus II, 927 Grey Tint

Sisalana II 832 Agave, Sisalana II 878 Hemp, Ephemeral II 969 Relaxation, Juniperus II 842 Cypress



Mohawk Group

Juniperus II

COLORWAYS



358 Copper Mine



817 Temperate



821 Flaxen



838 Fawn



842 Cypress



857 Mystic



868 Reclaimed



888 Balanced



917 Saxon



925 Palisade



927 Gray Tint



955 Nightingale



987 Voyage

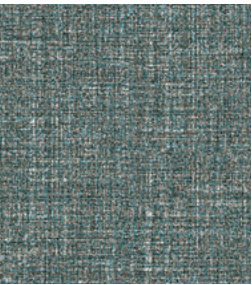


Juniperus II 842 Cypress



Mohawk Group

Sisalana II COLORWAYS



565 Sky



656 Lawn



717 Linen



832 Agave



878 Hemp



917 Palladium



935 Twine



955 Cordage



959 Meteorite





Ephemeral II

COLORWAYS



545 Power



555 Pure



565 Centered



636 Sustain



738 Comfort



848 Natural



868 Soothe



878 Mood



969 Relaxation



Ephemeral II 878 Mood, Ephemeral II 565 Centered

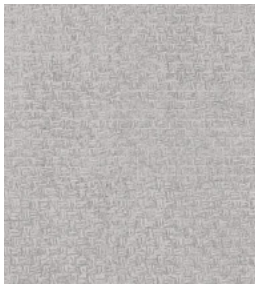


Mohawk Group

Therapeutic II COLORWAYS



838 Placid



959 Sensation

Calmness II COLORWAYS



848 Retreat



949 Harmony



979 Casual

Therapeutic II 959 Sensation, Calmness II 979 Casual



Resilient Sheet

Discover a hard surface flooring solution that delivers superior durability and stain resistance, ensuring ease of care for the life of the floor. Mohawk Group's Resilient Sheet Flooring provides elegant design and performance solutions for public and private spaces.

PERFORMANCE

- M-Force™ provides exceptional scratch, puncture and stain resistance for lasting beauty.
- Easy to clean and maintain, M-Force™ provides greater stain and soil protection.

WATER RESISTANCE

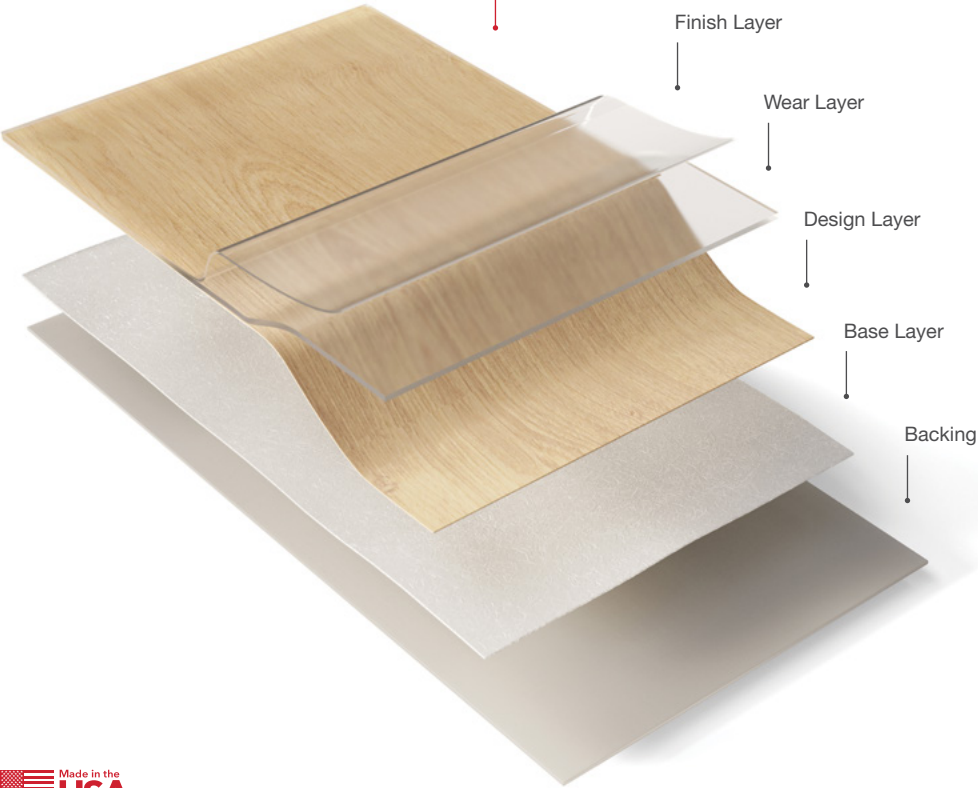
- With welded seams and a water-repellent finish, Healthy Environments resilient styles create waterproof flooring systems.

ADDITIONAL FEATURES

- 6' 6" & 13' 2" sheet with 20 mil commercial wear layer for superior durability
- Creates seamless visual with coordinating weld rod colors to create an impermeable surface.
- FloorScore® Certified
- Approved for heavy commercial applications with heavy rolling loads covered by a 10 Year Commercial/Under Bed Warranty.

M-Force™

A synergy of three components bonded together into one high-performance flooring solution.



Beyond
Carbon
Neutral **+5**

2022

All products carbon neutral

PLUS an additional 5% for a net-positive impact on the climate

2040

Net zero carbon emissions

We've signed The Climate Pledge to be net zero in emissions by 2040 and have already started major changes to reduce our carbon footprint.

Neutral is not enough.

With our holistic improvement of the life cycle of our flooring products—from full product transparency, to reduced water usage in manufacturing, to carbon neutrality and beyond—better is just the beginning.



Better for our world means doing more to stop and reverse climate change.

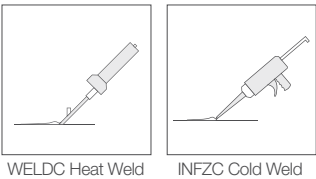


Resilient Sheet Weld Rods and Accessories

Mohawk Group's Solid Color Heat Weld Rods are recommended for our Resilient Sheet Collections. The weld rods are used for seaming, wayfinding or accenting commercial resilient sheet. For suggested color coordinates with Healthy Environments, view the recommended weld rod chart online. Final weld rod color selection is determined by specifier or end-user based on the flooring design.

HEAT WELD / COLD WELD

Optional heat welding or cold welding techniques can be used to create seamless, sanitary flooring that's easy to maintain. Place order using "WELDC" style number, followed by the color number. Place order using "INFZC" for the Infuze Seam Sealer.



Weld Rod Coordinates

Specifications

- Calmness II (C2058)
- Ephemeral II (C2056)
- Juniperus II (C2059)
- Sisalana II (C2055)
- Therapeutic II (C2057)

DESIGN

Width	6'6" and 13'2"
Overall Thickness	.080" (2.0mm)
Wear Layer	20 mil (0.5mm)
Finish	M-Force™
Roll Size	50' min - 85' max
Colors Available	
Calmness II	3
Ephemeral II	9
Juniperus II	13
Sisalana II	9
Therapeutic II	2
Pattern Repeat	Calmness II 39.37"W X 39.37"L (19.69" drop) Ephemeral II 39.37"W X 39.37"L Juniperus II 39.37"W X 39.37"L (19.69" drop) Sisalana II 39.37"W X 39.17"L (19.69" drop) Therapeutic II 39.37"W X 39.37"L
Seaming Method	Mohawk Solid Color Heat Weld Rod or Cold Weld

For detailed adhesive and installation information visit mohawkgroup.com

PERFORMANCE

Construction	Commercial Grade Heterogeneous Resilient Sheet Non-ortho Phthalate Construction
Classification	ASTM F - 1303 Type 1, Grade 1, Class A
Flexibility	ASTM 137 - Passes
Wear Layer Thickness	ASTM 410 - Passes
Thickness	ASTM F386 - Passes, as specified ± .005"
Static Load Limit	ASTM F970 - Passes, 750 psi Modified
Coefficient of Friction	ASTM C1028 - Passes, 0.53 West, 0.73 Dry
Rolling Load	ASTM F2753 - No change
Residual Indentation	ASTM F1914 - Passes, Average less than 8%
Resistance to Chemicals	ASTM F925 - Passes, No Change
Resistance to Light	ASTM F1515 - Passes, ΔE ≤ 8
Resistance to Heat	ASTM F1514 - Passes, ΔE ≤ 8
Electrostatic Propensity	AATCC 134 - Less than 3.5 kV
Critical Radiant Flux	ASTM E648 - Meets, Class 1
Smoke Density	ASTM E662 - Meets, 450 or less

SUSTAINABILITY

Certification	FloorScore® Certified
Carbon	Net-Positive Carbon (Neutral +5%)

SERVICE

Warranties	Limited 10 Year Commercial, Limited 10 Year Under Hospital Bed Warranty using M95.0 or M99.0
------------	---

For detailed warranty information visit mohawkgroup.com

