



# Expedition II

Lithosphere II   Ecosphere II   Digital Terrain II



# Expedition II

Set out for new frontiers with Expedition II. In a refreshed palette of neutrals and subtle hues, this curation of our three most popular Expedition styles makes it simple to bring spaces a renewed sense of place.

Designed for workplaces, retail spaces, educational environments, and beyond, Expedition II collection captures a grounded, natural feel with a refined modern edge. The styles include Lithosphere II, inspired by the geometric layers of stone; Ecosphere II, reflecting the soft beauty of weathered landscapes; and Digital Terrain II, a small-scale pattern that adds subtle texture and depth.

Available in 24" x 24" carpet tiles, the collection features the enduring performance of our patented Duracolor® Tricor fiber and EcoFlex® ONE backing, sustainably manufactured to go Beyond Neutral in both carbon and water.

For added versatility, Expedition II coordinates seamlessly with Hot & Heavy II Chromascope 5.0 LVT in both color and tile thickness, ensuring a cohesive look and smooth transition across spaces with different flooring needs.



Learn more at [mohawkgroup.com](https://mohawkgroup.com)

Cover:  
Digital Terrain II 848 Caravan, Brick Ashlar Installation  
Lithosphere II 728 Nomad, Chromascope 5.0 120 Buff Ivory,  
Vertical Ashlar Installation







Digital Terrain II 848 Caravan, Brick Ashlar Installation  
Chromascope 5.0 250 Cozy Linen, Vertical Ashlar Installation



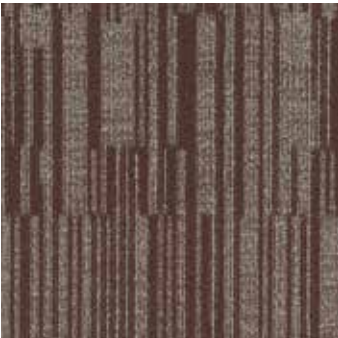
Ecosphere II 989 Summit, Digital Terrain II 989 Summit  
Brick Ashlar Installation



# Colorways

Expedition II offers ten refreshed colorways per style, featuring elegant neutrals in warm and cool tones as well as quiet shades of blue, green, and burgundy. The colorways and styles can be used individually or in tandem to aid wayfinding, define zones, or turn up the texture and contrast.

Lithosphere II



358 Passage

Ecosphere II



358 Passage

Digital Terrain II



358 Passage



575 Harbor



575 Harbor



575 Harbor



649 Wander



649 Wander



649 Wander



728 Nomad



728 Nomad



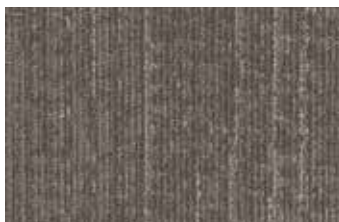
728 Nomad

## Lithosphere II



848 Caravan

## Ecosphere II



848 Caravan

## Digital Terrain II



848 Caravan



917 Trailhead



917 Trailhead



917 Trailhead



935 Waypoint



935 Waypoint



935 Waypoint



965 Ravine



965 Ravine



965 Ravine



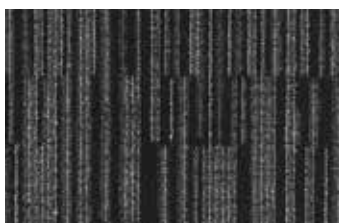
978 Outrider



978 Outrider



978 Outrider



989 Summit



989 Summit



989 Summit



Lithosphere II 575 Harbor, Chromascope 5.0 650 Serene Navy  
Vertical Ashlar Installation

# Better for People and Planet

Our future depends on the work we do today. At Mohawk Group, commitment to our planet extends beyond just products and processes: it's how we challenge ourselves to do and be better every day, how we make decisions, how we reinvest in our people and our planet, and how we define what matters most as we work to deliver value for generations to come.



## Human Health

**Declare Red List Free**  
**Health Product Declaration**  
**Green Label Plus Certified**

Mohawk Group is proud to provide products with Green Label Plus certifications for better indoor air quality and free of Red List chemicals.



## Climate Health

**UL Certified EPD**



**Living Product Challenge Certified**

Expedition II carpet tile is net-positive for carbon and water and achieves Petal Certification from the International Living Future Institute by complying with multiple imperatives of all seven petals.

**Net Zero Carbon Emissions by 2040**

We've signed The Climate Pledge to be net zero by 2040 and have already started major changes to reduce our carbon footprint.

## Circular Economy

**End of Life Options**

Take Back Program (ReCover)

## Ecosystem Health

**Neutral Is Not Enough**

With the holistic improvement of the lifecycle of our flooring products – from full product transparency, to reduced water usage in manufacturing, to carbon neutrality and beyond – better is just the beginning.

**Beyond Carbon Neutral**

Carbon neutral plus an additional 5% carbon handprint for a net-positive impact on the environment.

**Beyond Water Neutral**

All Mohawk Group carpet tiles are water neutral plus an additional 5% water handprint for a net-positive impact on the environment.





# EcoFlex® ONE

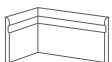
## ALL-IN-ONE FLOORING SOLUTION

Every element in the EcoFlex® ONE construction has purpose, and combined they form the industry's leading modular carpet solution. The hydrophobic PET cushion, backing layers, and Duracolor® Tricolor fiber are engineered with your end-goals in mind: to optimize your investment, be sustainably made, and provide a better occupant experience.

### KEY FEATURES

- Better Acoustics
- Enhanced Comfort
- Worry-Free Installation
- Simplified Maintenance
- NSF 140 Platinum
- Carbon Neutral +5%
- Limited Lifetime Warranty

EcoFlex® ONE is a unified solution to the wide range of needs in your spaces. This advanced backing system improves every aspect of comfort and acoustics while eliminating moisture testing—all with a lighter environmental footprint that is carbon neutral plus an additional 5% handprint. Tested and proven, EcoFlex® ONE is the holistic solution for human-centric environments.



**Elemental Edges**  
Wall Base

Elemental Edges is a portfolio of architectural, straight, and cove wall base for your finishing needs. Featuring a range of colors that coordinate with our full product line, Elemental Edges also offers 14 stocked colors in cove wall base.

# Specifications

CARPET TILE

Lithosphere II (GT376)  
Ecosphere II (GT378)  
Digital Terrain II (GT379)

DESIGN

Size	24 in x 24 in (.6096 m x .6096 m)
Surface Appearance	Textured Patterned Loop
Fiber Type	Duracolor® Tricor Premium Nylon
Dye Method	Solution Dyed
Colors Available	10

PERFORMANCE

Construction	Tufted
Gauge	1/12" (47.00 rows per 10cm)
Stain Release Technology	Permanent, Built into the Fiber
Soil Release Technology	EcoSentry Soil Protection
Backing Material	EcoFlex® ONE
Flammability	(ASTM E 648) Class 1 Glue Down
Smoke Density	(ASTM E 662) < 450
Static Propensity	(AATCC - 134) < 3.5 KV

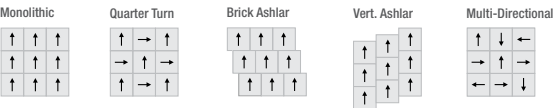
SUSTAINABILITY

Certification	Living Product Challenge Petal Certified; Declare Red List Free
Indoor Air Quality	Green Label Plus Certified
NSF 140	Platinum

SERVICE

Warranties	Lifetime Limited Carpet Tile Warranty Lifetime Limited Duracolor® Stain Warranty Lifetime Static
------------	--

Installation Instructions:



Mohawk Group warrants its adhesives for the life of the original installation only when a Mohawk Group style (product) is installed. Mohawk's floor preparation procedures must be followed to ensure that the substrate has been prepared properly. The use of Mohawk branded adhesives is required to ensure optimum results and are the only approved adhesives warranted by Mohawk. Please contact your local Sales Representative for installation guidelines.

**These patterns contain inherent characteristics which may result in pattern run off and/or pattern appearance variations at the seams or tile edges (darker or lighter pattern lines). These characteristics are inherent in the patterns and are not manufacturing defects. Consideration to these characteristics should be given when selecting an installation method.**

Chair pads are recommended under office chairs with roller casters to preserve appearance retention, act as a deterrent toward delamination and to prevent premature or accelerated wear. Walk-off tiles from the Tuff Stuff II Collection are recommended at entryways to reduce soiling.

Mohawk Group is providing this architect folder for the purpose of promoting our commercial business. This folder and its samples shall remain the property of Mohawk Group. Color may vary from dye lot to dye lot. Substitution of material may be made due to improved technology, supply limitations or other factors. The performance of this product is not affected by such variations.

For current and complete specifications please visit [www.mohawkgroup.com](http://www.mohawkgroup.com)

**RECOVER**  
RECYCLING PROGRAM  
877-3RE-CYCL



Produced with recycled materials

