



Emerging Directions

Communal Path Linear Effect



Emerging Directions

Emerging Directions is a 24" x 24" modular carpet tile collection of two styles that have pronounced textural patterns, all inspired by the Swedish concept of Lagom. This is a lifestyle principle of living a balanced life with appreciation for the humble things around you. The word Lagom means "just the right amount", and this was the driving inspiration for the patterns, leaving the user of a space with the sense of things being just right – not too stimulating, and yet not too quiet. This results in a sense of belonging to a place and being at peace in your environment. The textural quality of the carpet plays a role in this sense too, with loops that are reminiscent of natural fibers and textural knit stitch work.

Learn more at mohawkgroup.com



Cover: Communal Path, 547 Lagoon
Vertical Ashlar



Communal Path, 547 Lagoon, 989 Ebony Slate; Linear Effect, 868 Shadow Grey, 527 Stonehedge



Communal Path, 737 Porcini
Vertical Ashlar



Linear Effect, 737 Porcini
Vertical Ashlar



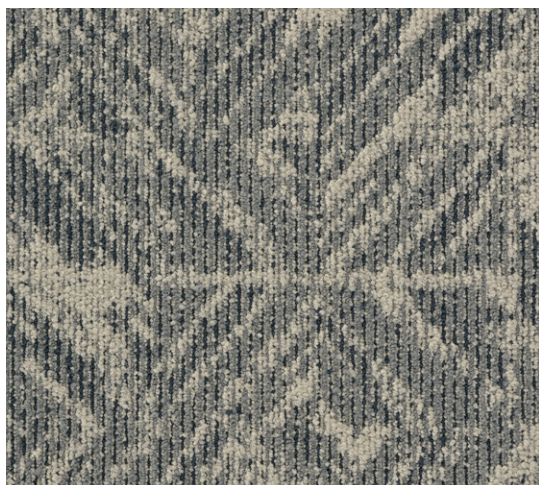
Linear Effect, 868 Shadow Gray
Vertical Ashlar



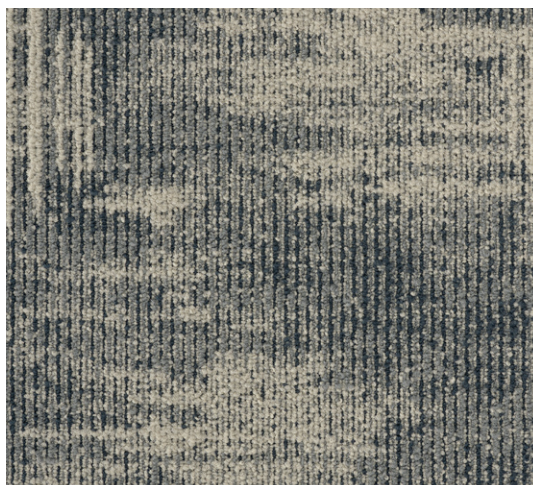
Linear Effect, 547 Lagoon
Brick Ashlar



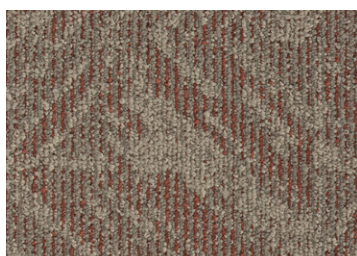
Emerging Directions COLORWAYS



Linear Effect
547 Lagoon



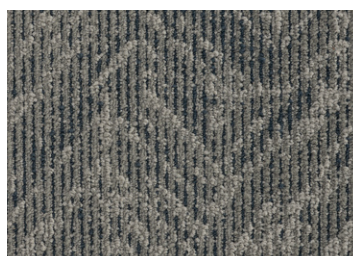
Communal Path
547 Lagoon



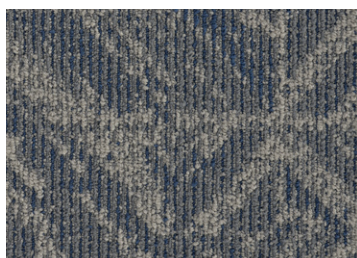
Linear Effect
257 Georgian Brick



Linear Effect
527 Stonehedge



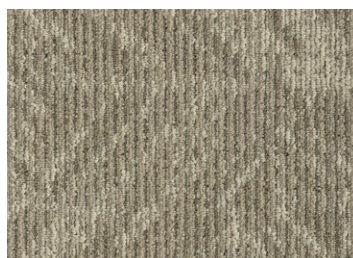
Linear Effect
557 Harmony



Linear Effect
565 Inky Blue



Linear Effect
657 Olive Grove



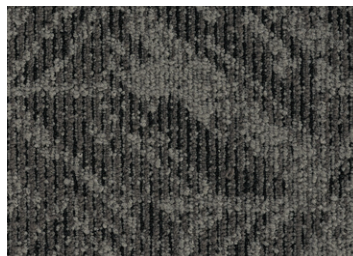
Linear Effect
737 Porcini



Linear Effect
775 Fieldstone



Linear Effect
868 Shadow Grey



Linear Effect
989 Ebony Slate

**Beyond
Carbon
Neutral**



2022

All products carbon neutral

PLUS an additional 5% for a net-positive impact on the climate

2040

Net zero carbon emissions

We've signed The Climate Pledge to be net zero in emissions by 2040 and have already started major changes to reduce our carbon footprint.

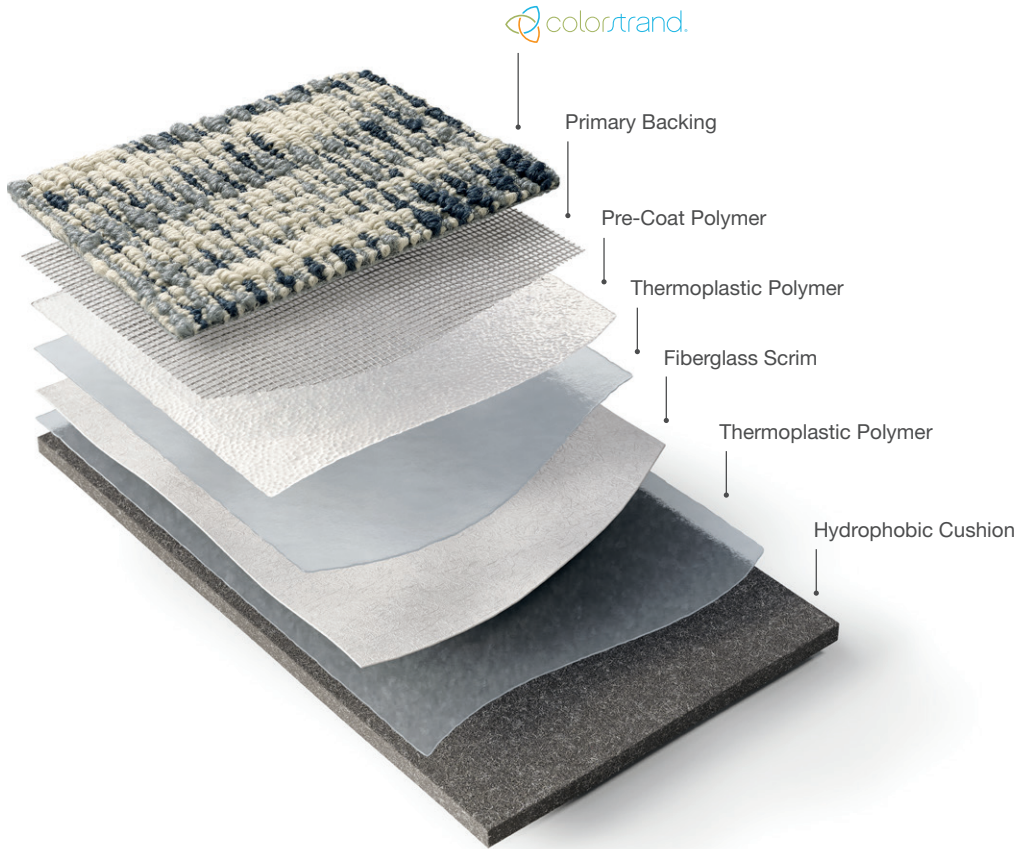
Neutral is not enough.

With our holistic improvement of the life cycle of our flooring products—from full product transparency, to reduced water usage in manufacturing, to carbon neutrality and beyond—better is just the beginning.

**THE
CLIMATE
PLEDGE**



Better for our world means doing more to stop and reverse climate change.



EcoFlex™ AIR WITH Colorstrand™ SD Nylon

EcoFlex AIR with Colorstrand SD Fiber continually exceeds the demanding expectations of our customers. EcoFlex AIR improves aspects of comfort and acoustics while eliminating moisture testing. Colorstrand Fiber integrates the design flexibility and color intensity of solution dyed fiber with lasting beauty and value. The two combined offer a lighter environmental footprint that is Beyond Carbon Neutral.

Improved Acoustics

With EcoFlex AIR, there is virtually no sound transmission between floors, and in-room noise is also drastically reduced. This decrease in auditory distraction helps contribute to feelings of well-being.

Enhanced Comfort

The integrated cushion provides greater comfort and helps reduce fatigue, supporting occupant productivity.

Worry-Free Installation

No moisture testing required, provided no visible moisture is present.¹ There is also no need to remove existing flooring adhesives.

Simplified Maintenance

EcoFlex AIR carpet features Colorstrand SD fiber, engineered to hide soil while releasing it easily for cleaning.

¹ See Mohawk Group installation guidelines for additional details.

Specifications

Communal Path (BT588)
Linear Effect (BT589)

DESIGN

Size	24" x 24" (.6096 m x .6096 m)
Surface Appearance	Textured Patterned Loop
Fiber Type	Colorstrand® SD Nylon
Dye Method	Solution Dyed
Colors Available	
Communal Path	10
Linear Effect	10

PERFORMANCE

Construction	Tufted
Gauge	1/12" (47.00 rows per 10cm)
Stain Release Technology	EcoSentry Plus Stain Protection
Soil Release Technology	EcoSentry Soil Protection
Backing Material	EcoFlex® AIR
Flammability	ASTM E 648 - Class 1 (Glue Down)
Smoke Density	ASTM E 662 - Less than 450
Static Propensity	AATCC - 134 Under 3.5 KV

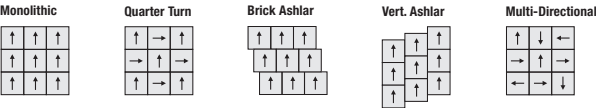
SUSTAINABILITY

Certification	Living Product Challenge Petal Certified; Declare Red List Free
Indoor Air Quality	Green Label Plus Certified #1171
NSF 140	Gold
Carbon	Net-Positive Carbon (Neutral +5%)
Water	Net-Positive Water (Neutral +5%)

SERVICE

Warranties	Lifetime Limited Carpet Tile Warranty, Lifetime Limited Colorfastness to Light, 10 Year Limited Colorfastness to Atmospheric Contaminants, 10 Year Stain Warranty, Lifetime Static
------------	--

Installation Instructions:



Mohawk Group warrants its adhesives for the life of the original installation only when a Mohawk Group style (product) is installed. Mohawk's floor preparation procedures must be followed to ensure that the substrate has been prepared properly. Failure to use Mohawk Group adhesives or to follow Mohawk's floor preparation procedures will void all lifetime adhesive warranties. Please contact your local Sales Representative for installation guidelines.

These patterns contain inherent characteristics which may result in pattern run off and/or pattern appearance variations at the seams or tile edges (darker or lighter pattern lines). These characteristics are inherent in the patterns and are not manufacturing defects. Consideration to these characteristics should be given when selecting an installation method.

Chair pads are recommended under office chairs with roller casters to preserve appearance retention, act as a deterrent toward delamination and to prevent premature or accelerated wear. Walk-off tiles from the Tuff Stuff II Collection are recommended at entryways to reduce soiling.

Mohawk Group is providing this architect folder for the purpose of promoting our commercial business. This folder and its samples shall remain the property of Mohawk Group. Color may vary from dye lot to dye lot. Substitution of material may be made due to improved technology, supply limitations or other factors. The performance of this product is not affected by such variations.

For current and complete specifications please visit www.mohawkgroup.com



Produced with recycled materials



Mohawk Group

Mohawk Group
160 South Industrial Blvd.
Calhoun, GA. 30701
800.554.6637
mohawkgroup.com

MG758 12PG BROCHR LT