



Mohawk Group

Mohawk Group  
160 South Industrial Blvd.  
Calhoun, GA. 30701  
800.554.6637  
mohawkgroup.com

MG789 16PG BROCHR LT

# Emanating Echoes

Quiet Musings   Introspective Thoughts





## Emanating Echoes

Like a stone dropped in still water, positive action ripples outward, carrying the potential for impact far beyond its source. With Emanating Echoes, we begin with the positive action of water-conserving manufacturing, then go further with patterns designed to inspire calm confidence. The carpet tile collection helps create positive environments where people are empowered to make an impact all their own.

Of the collection's five styles, Quiet Musings and Introspective Thoughts serve as versatile coordinates that can also be used on their own. Pair them with our LVT styles to enhance a variety of interior aesthetics.

Emanating Echoes is part of the Waterways Project. When you specify from this collection, you're promoting water conservation and human health around the world—continuing the ripples of positive action.



Learn more at [mohawkgroup.com](https://mohawkgroup.com)

Cover:  
Introspective Thoughts 828  
Reforestation 868







With Mohawk Group's new EcoFlex™ ONE backing, Emanating Echoes' modular 24" x 24" carpet tiles are Living Product Challenge Petal Certified, for a net-positive impact in both carbon and water. Emanating Echoes combines our state-of-the-art EcoFlex ONE with the advanced engineering of Duracolor® Tricor fiber to deliver modular carpet that leads the industry in durability, cleanability, performance, and sustainability. This collection supports Mohawk's sustainability efforts and commitment to Net Zero carbon emissions by 2040, sustaining a better ecological community.



**NEXT GENERATION  
CARPET FIBER**

Duracolor Tricor's new innovative modified-delta shape and optical core optimize color clarity, strength, stain resistance, and soil hiding and removal. As a result, Duracolor Tricor delivers the ultimate synthesis of brilliant color and unsurpassed performance.



**LIVING PRODUCT  
CERTIFICATION**

Produced at our Living Site, Emanating Echoes is Net Positive for both carbon and water and achieves Petal Certification from the International Living Future Institute by complying with multiple imperatives of all seven petals.

**EcoFlex™ ONE**

**CARPET TILE BACKING**

Harnessing proven technology and advanced materials, EcoFlex™ ONE delivers an all-in-one solution for optimal flooring performance and reduced costs, while supporting greater wellness for people and planet.



**SEAMLESS  
TRANSITIONS**

Emanating Echoes does not require transition strips when used with any of our 4.5/5mm LVT products, reducing installation time and costs.

**FLEXLOK+**

**FLEXLOK+ ADHESIVE TAB**

FlexLok is a worry-free, fume-free, fast and flexible adhesive tab for installing modular carpet on any substrate, including wood, VCT and concrete. The environmentally-friendly FlexLok system is CRI Green Label Certified, Declare Red List Free, and virtually eliminates VOCs.

**ADDITIONAL FEATURES**

- Lifetime Duracolor Stain Warranty
- LEED, WELL & LBC Eligible
- Declare Red List Free
- CRI Green Label Plus
- NSF 140 Platinum



Introspective Thoughts, 939; Quiet Musings, 828  
Custom Installation

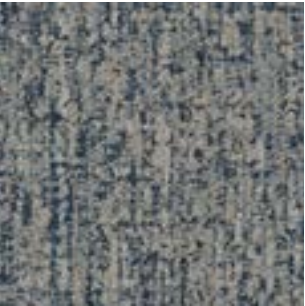




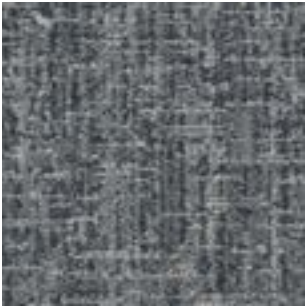
# Colorways

Textural and subtle, Quiet Musings provides a muted incorporation of accent color and is an ideal backdrop for any space.

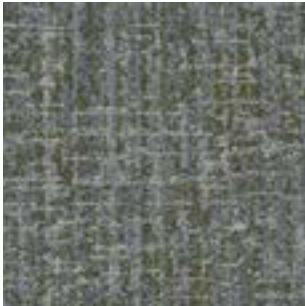
## Quiet Musings



Wickham 525



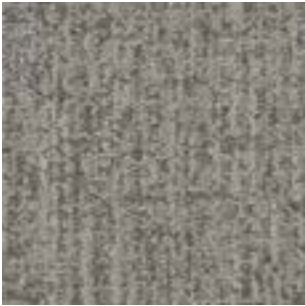
Darcy 535



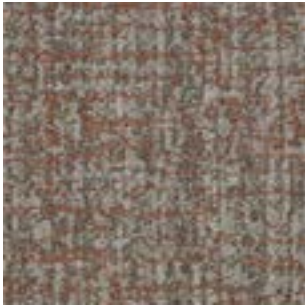
Elizabeth 636



Austen 658



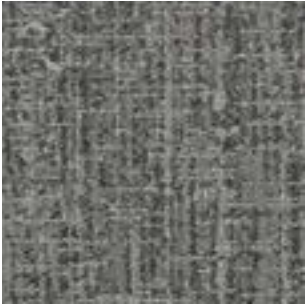
Jane 828



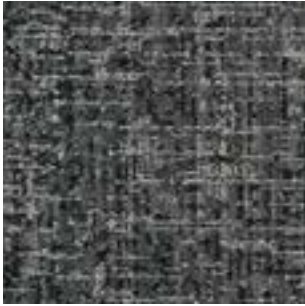
Bingley 832



Lydia 931



Charlotte 939



Collins 979



Quiet Musings, 939  
Brick Ashlar





# Colorways

Based on one of our most popular styles, Introspective Thoughts captures the loose, open weave of a timeworn mat or textile.

## Introspective Thoughts



Wickham 525



Darcy 535



Elizabeth 636



Austen 658



Jane 828



Bingley 832



Lydia 931



Charlotte 939



Collins 979


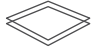
Introspective Thoughts, 939  
Brick Ashlar





## Color Pulse™

**Color Pulse™** is a fiber breakthrough, delivering multi-color dimension of space dyed yarn but with the lower environmental impact and high performance of solution dyed nylon. Color Pulse uses a zero-water dyeing process, helping reduce your project's water impact by up to one cup of water per carpet tile (compared to a space dyed product), conserving 5.3 million cups (or 331,000 gallons) of water each year.

 →  = **5.3 Mil Cups of Water**  
Conserved Per Year



Duracolor Tricolor solution dyed nylon delivers unsurpassed stain resistance, colorfastness, durability, color clarity, and enhanced soil performance.

### Soil Control

Optimal soil hiding, soil removal, and color clarity, due to its unique shape and triangular hollow core.

### Stain Resistance

Utilizes a patented process for permanent built-in stain resistance that won't wash or wear off.

### Durability

Unique fiber shape and core resist crushing, for carpet with enhanced durability and a longer life cycle.

### Sustainability

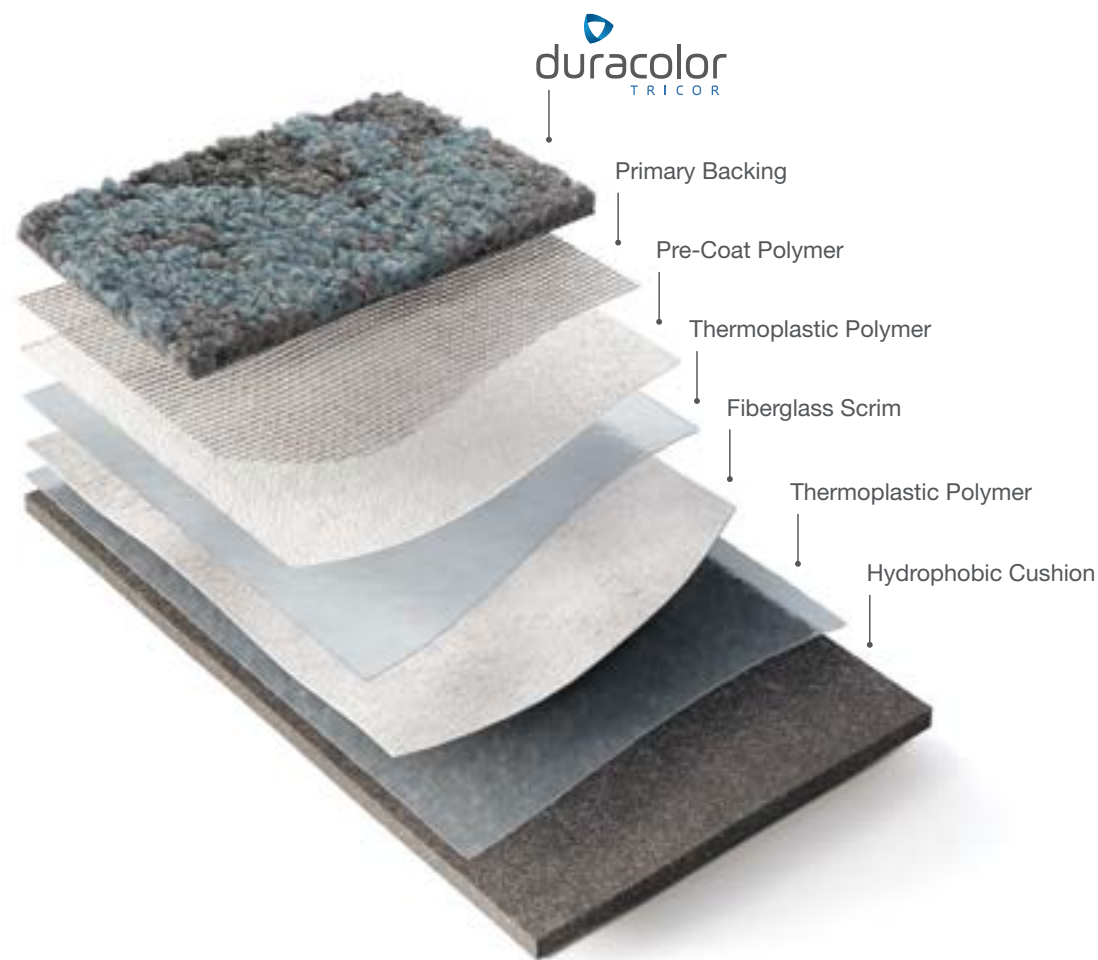
Declare Red List Free and made with a minimum of 70% recycled content.

### Performance

Unsurpassed colorfastness to light and atmospheric contaminants, so colors won't fade.







## EcoFlex™ ONE

ALL-IN-ONE FLOORING SOLUTION

Every element in the EcoFlex™ ONE construction has purpose, and combined they form the industry's leading modular carpet solution. The hydrophobic PET cushion, backing layers, and Duracolor Tricor fiber are engineered with your end-goals in mind: to optimize your investment, be sustainably made, and provide a better occupant experience.

### KEY FEATURES

- Better Acoustics
- Enhanced Comfort & Safety
- Worry-Free Installation
- Simplified Maintenance
- NSF 140 Platinum
- Carbon Neutral +5%
- Limited Lifetime Warranty

EcoFlex™ ONE is a unified solution to the wide range of needs in your spaces. This advanced backing system improves every aspect of comfort and acoustics while eliminating moisture testing—all with a lighter environmental footprint that is carbon neutral plus an additional 5% offset. Tested and proven, EcoFlex™ ONE is the holistic solution for human-centric environments.

## Better for People and Planet

Our future depends on the work we do today. At Mohawk, commitment to our planet extends beyond just products and processes: it's how we challenge ourselves to do and be better every day, how we make decisions, how we reinvest in our people and our planet, and how we define what matters most as we work to deliver value for generations to come.



**Declare Red List Free**  
**Health Product Declaration**  
**Green Label PLUS**

Mohawk Group is proud to provide products free of Red List chemicals with verified documentation of their impact throughout the lifecycle, with Greenguard PLUS certification for better indoor air quality.



**UL Certified EPD**  
**Living Product Challenge Petal Certified**

**Beyond Carbon Neutral**

PLUS an additional 5% for a net-positive impact on the climate.

**Net Zero Carbon Emissions by 2040**

We've signed The Climate Pledge to be net zero by 2040 and have already started major changes to reduce our carbon footprint.

**Neutral Is Not Enough**

With the holistic improvement of the life cycle of our flooring products – from full product transparency, to reduced water usage in manufacturing, to carbon neutrality and beyond – better is just the beginning.



Better for our world means doing more to stop and reverse climate change.





# Carpet Tile Area Rug Program

Mohawk Group believes in empowering architects and designers with the tools to achieve their vision. With our carpet tile area rug program we merge design with scale and versatility. Pick your favorite Mohawk Group carpet tile design and transform it into a beautiful area rug in a few simple steps:

1. Select your pattern and color
2. Determine your rug size (max. 12'x12')
3. Select edge treatment and color
4. Attached non-skid backing required
5. Submit your order

**Ready to order?**

- Contact your Mohawk Group or Durkan Account Executive
- Email [custom\\_cs@mohawkind.com](mailto:custom_cs@mohawkind.com)
- Call 800.622.6228, ext. 24733

## Specifications

Quiet Musings (GT345)  
Introspective Thoughts (GT344)

**DESIGN**

Size	24" x 24" (.6096 m x .6096 m)
Surface Appearance	Textured Patterned Multi-Colored Loop
Fiber Type	Duracolor® Tricor Premium Nylon
Dye Method	Solution Dyed
Colors Available	
Quiet Musings	9
Introspective Thoughts	9

**PERFORMANCE**

Construction	Tufted
Gauge	1/12" (47.00 rows per 10cm)
Stain Release Technology	Permanent, Built into the Fiber
Soil Release Technology	EcoSentry Soil Protection
Backing Material	EcoFlex™ ONE
Flammability	ASTM E 648 - Class 1 (Glue Down)
Smoke Density	ASTM E 662 - Less than 450
Static Propensity	AATCC - 134 Under 3.5 KV

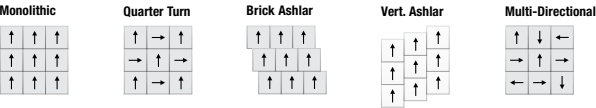
**SUSTAINABILITY**

Certification	Living Product Challenge Petal Certified; Declare Red List Free
Indoor Air Quality	Green Label Plus Certified #1171
NSF 140	Platinum
Carbon	Net Positive Carbon (Neutral +5%)
Water	Net Positive Water (Neutral +5%)

**SERVICE**

Warranties	Lifetime Limited Carpet Tile Warranty, Lifetime Limited Duracolor® Stain Warranty, Lifetime Static
------------	--

Installation Instructions:



Mohawk Group warrants its adhesives for the life of the original installation only when a Mohawk Group style (product) is installed. Mohawk's floor preparation procedures must be followed to ensure that the substrate has been prepared properly. Failure to use Mohawk Group adhesives or to follow Mohawk's floor preparation procedures will void all lifetime adhesive warranties. Please contact your local Sales Representative for installation guidelines.

**These patterns contain inherent characteristics which may result in pattern run off and/or pattern appearance variations at the seams or tile edges (darker or lighter pattern lines). These characteristics are inherent in the patterns and are not manufacturing defects. Consideration to these characteristics should be given when selecting an installation method.**

Chair pads are recommended under office chairs with roller casters to preserve appearance retention, act as a deterrent toward delamination and to prevent premature or accelerated wear. Walk-off tiles from the Tuff Stuff II Collection are recommended at entryways to reduce soiling.

Mohawk Group is providing this architect folder for the purpose of promoting our commercial business. This folder and its samples shall remain the property of Mohawk Group. Color may vary from dye lot to dye lot. Substitution of material may be made due to improved technology, supply limitations or other factors. The performance of this product is not affected by such variations.

For current and complete specifications please visit [www.mohawkgroup.com](http://www.mohawkgroup.com)

