



Color Balance II



# Color Balance II

Experience the convergence of rich texture and color with Color Balance II. This refreshed palette of 24 colorways allows for a versatile range of warm and cool neutrals, as well as vibrant color accents, offering endless color possibilities.

With ongoing interest in layering of multicolor hues, you can create spaces with complete flexibility that require dynamic color and texture blocking, gradients, wayfinding through color, brand and identity, and monochromatic interiors.

Color Balance II uses a mix of two Duracolor® yarns, solid and heathered, to give it its unique wool-like appearance. The blend of these two yarns creates a soft, slubby near-solid textile look, with minimized seams. The eye sees a field of color and texture, balancing your perception of floor and finish that's pleasing to the senses.

Color Balance II coordinates seamlessly with the new Hot & Heavy II Chromascope 5.0 in both color and thickness, ensuring smooth transitions and a cohesive look.



Learn more at [mohawkgroup.com](https://mohawkgroup.com)

Cover:  
Color Balance II, 656 Herbaceous Olive, 555 Smooth Sailing,  
727 Radiant Birch, 831 Cozy Coffee  
Custom Installation





Color Balance II, 464 Sassy Berry  
Chromascope 5.0, 237 Peach Bliss, 248 Melon Harmony, 344 Muted Maroon  
Custom Installation







# Colorways

Using a mix of two Duracolor® yarns—solid and heathered—the texture in this collection creates a wool-like appearance, resulting in a soft, slubby, near-solid textile look for each of the vibrant colors.



131 Sunkissed Dandelion



228 Pensive Peach



232 Warming Embers



343 Sweet Maraschino



344 Fiery Fuchsia



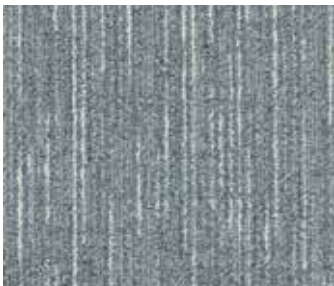
454 Punchy Plum



464 Sassy Berry



525 Crisp Air



527 Opalescent Ice



536 Optimistic Topaz



546 Frosted Seaglass



555 Smooth Sailing



556 Splashing Cypress



575 Echoing Pacific



646 Fresh Juniper



656 Herbaceous Olive



727 Radiant Birch



748 Light Limestone



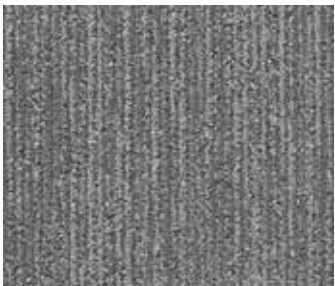
831 Cozy Coffee



858 Sharp Shale



868 Grounded Stone



939 Inquisitive Gravel



949 Whispering Mineral



989 Solemn Obsidian



Color Balance II, 656 Herbaceous Olive, 727 Radiant Birch  
Custom Installation

# Better for People and Planet

Our future depends on the work we do today. At Mohawk Group, commitment to our planet extends beyond just products and processes: it's how we challenge ourselves to do and be better every day, how we make decisions, how we reinvest in our people and our planet, and how we define what matters most as we work to deliver value for generations to come.



## Human Health

**Declare Red List Free**  
**Health Product Declaration**  
**Green Label Plus Certification**

Mohawk Group is proud to provide products free of Red List chemicals with verified documentation of their impact throughout the lifecycle, with Green Label Plus certification for better indoor air quality.



## Climate Health

**UL Certified EPD**



**Living Product Challenge Petal Certified**

Color Balance II carpet tile is net-positive for carbon and water and achieves Petal Certification from the International Living Future Institute by complying with multiple imperatives of all seven petals.

**Beyond Carbon Neutral**

Carbon neutral PLUS an additional 5% carbon offset for a net-positive impact on the environment.

**Net Zero Carbon Emissions by 2040**

We've signed The Climate Pledge to be net zero by 2040 and have already started major changes to reduce our carbon footprint.

## Circular Economy

**End of Life Options**

Salvageable/Reusable in its Entirety  
Take Back Program (ReCover)

## Ecosystem Health

**Neutral Is Not Enough**

With the holistic improvement of the lifecycle of our flooring products – from full product transparency, to reduced water usage in manufacturing, to carbon neutrality and beyond – better is just the beginning.

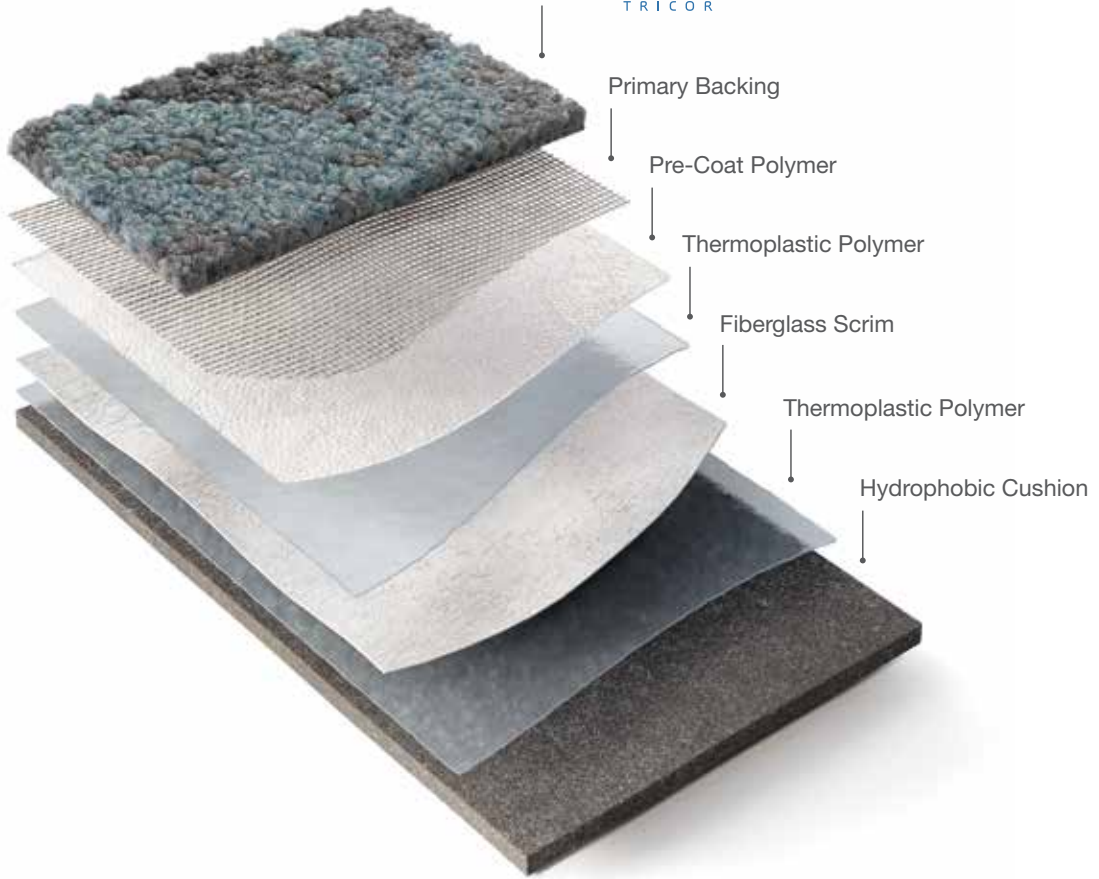
**Beyond Water Neutral**

Mohawk Group balances all water on its Living Product Challenge Petal Certified carpet tiles by 105% for a net-positive impact on our waterways.





**duracolor**  
TRICOR



# EcoFlex™ ONE

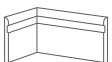
ALL-IN-ONE FLOORING SOLUTION

Every element in the EcoFlex™ ONE construction has purpose, and combined they form the industry's leading modular carpet solution. The hydrophobic PET cushion, backing layers, and Duracolor® Tricolor fiber are engineered with your end-goals in mind: to optimize your investment, be sustainably made, and provide a better occupant experience.

## KEY FEATURES

- Better Acoustics
- Enhanced Comfort
- Worry-Free Installation
- Simplified Maintenance
- NSF 140 Platinum
- Carbon Neutral +5%
- Limited Lifetime Warranty

EcoFlex™ ONE is a unified solution to the wide range of needs in your spaces. This advanced backing system improves every aspect of comfort and acoustics while eliminating moisture testing—all with a lighter environmental footprint that is carbon neutral plus an additional 5% offset. Tested and proven, EcoFlex™ ONE is the holistic solution for human-centric environments.



**Elemental Edges**  
Wall Base

Elemental Edges is a portfolio of architectural and cove wall base for your finishing needs. Featuring a range of colors that coordinate with our full product line, Elemental Edges also offers 14 stocked colors in cove wall base.

# Specifications

CARPET TILE

Color Balance II (GT371)

DESIGN

Size	12" x 36"
Surface Appearance	Textured Patterned Loop
Fiber Type	Duracolor® Tricor Premium Nylon
Dye Method	Solution Dyed
Colors Available	24

PERFORMANCE

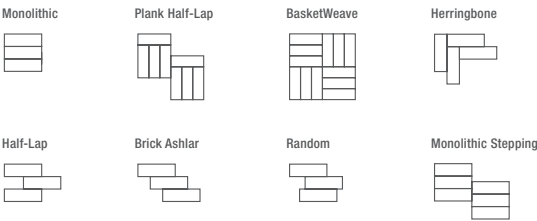
Construction	Tufted
Gauge	1/12" (47.00 rows per 10cm)
Stain Release Technology	Permanent, Built into the Fiber
Soil Release Technology	EcoSentry Soil Protection
Backing Material	EcoFlex™ ONE
Flammability	ASTM E 648 - Class 1 (Glue Down)
Smoke Density	ASTM E 662 - Less than 450
Static Propensity	AATCC - 134 Under 3.5 KV

SUSTAINABILITY

Indoor Air Quality	Green Label Plus Certified #1171
NSF 140	Platinum

SERVICE

Warranties	Lifetime Limited Carpet Tile Warranty, Lifetime Limited Duracolor® Stain Warranty, Lifetime Static
------------	--



RECOVER  
RECYCLING PROGRAM

Through Mohawk's ReCover Recycling Program over 160 million pounds of flooring has been diverted from landfills and giving a second life. We accept flooring from any manufacturer and will manage your entire recycling process.



Produced with recycled materials

