



Mohawk Group

Mohawk Group
160 South Industrial Blvd.
Calhoun, GA. 30701
800.554.6637
mohawkgroup.com

MG774 16PG BROCHR LT

Abbey Grove

Eden Terrace Garden Waltz London Thyme Structured Harmony



Abbey Grove

In greenhouses and conservatories, we find flourishing gardens in indoor spaces. Nature's presence creates a feeling of tranquility, while the juxtaposition with the built environment inspires creativity.

With Abbey Grove, you can bring the unique experience of the conservatory to any space, infusing the indoor environment with a sense of freshness and renewal. The four broadloom patterns explore both the architecture and natural elements of conservatories, creating spaces that feel refined yet comfortable.

Abbey Grove is a broadloom complement to the Emanating Echoes carpet tile patterns. With these coordinating soft surfaces plus our range of LVT styles, you can create inspired flooring designs for all types of spaces.



Learn more at mohawkgroup.com

Cover:
Structured Harmony 737 Natural Linen
Reforestation 220 Bridal Veil





Abbey Grove combines our state-of-the-art Weldlok® backing with Colorstrand® fiber to deliver broadloom with lasting performance, cleanability, and sustainability. This collection is Beyond Carbon Neutral for a net-positive impact in carbon. Abbey Grove supports Mohawk’s sustainability efforts and commitment to Net Zero carbon emissions by 2040, sustaining a better ecological community.



For over 15 years ColorStrand fiber has continually exceeded expectations. With unsurpassed colorfastness and EcoSentry Plus Soil® and Stain Protector, it delivers both lasting beauty and value.

Weldlok®

Weldlok is Mohawk Group’s standard broadloom backing system. It can be enhanced with OnGuard and AIR to meet project demands for moisture barriers and/or attached cushions. Weldlok is recyclable and contains a minimum 36% pre-consumer recycled content.



As of 2022, Mohawk Group floor covering products including our carpet tile, broadloom, woven, LVT, and other resilient surfaces are going Beyond Carbon Neutral, meaning an additional 5% carbon offset beyond neutral, for a net-positive impact on the environment.

Declare.

RED LIST FREE
This collection is Living Building Challenge (LBC) Declare Red List Free, which means it is free from any materials, chemicals or elements that are known to pose serious risks to human health or the environment.



AREA RUG AVAILABILITY
All of the patterns and colors from this collection can be turned into area rugs for your space. You can choose from a variety of edge treatments and specify any shape and size up to 12’ W x 45’ L.

ADDITIONAL FEATURES

- LEED, WELL & LBC Eligible
- CRI Green Label Plus
- NSF 140 Gold



Structured Harmony 737 Natural Linen



Mohawk Group



London Thyme 737 Natural Linen



Garden Waltz 939 Silver Lining



Senior Living Look Book

Explore more design ideas for your spaces with our segment-focused digital look books. Scan this QR code to view our Senior Living Look Book.



Eden Terrace 939 Silver Lining, Reforestation 220 Bridal Veil



Hospitality Look Book
Explore more design ideas for your spaces with our segment-focused digital look books. Scan this QR code to view our Hospitality Look Book.

Mohawk Group

Better for People and Planet

Our future depends on the work we do today. At Mohawk, commitment to our planet extends beyond just products and processes: it’s how we challenge ourselves to do and be better every day, how we make decisions, how we reinvest in our people and our planet, and how we define what matters most as we work to deliver value for generations to come.

Declare.

Commercial Nylon Broadloom Carpet on Weldlok Mohawk Group
Final Assembly: Chatsworth, Georgia, USA
Life Expectancy: 15 Year(s)
End of Life Options: Take Back Program (ReCover)
Ingredients:
Yarn: Nylon 6; Nylon 66; Titanium dioxide; **Coating:** Calcium Carbonate; Synthetic Elastomer; Aluminum Trihydrate; Sodium Polyacrylate Thickner; Ammonium Lauryl Sulfate; **Backing:** Polypropylene Homopolymer; Polyester; **Dyes:** Blue Colorant; Red Colorant; Yellow Colorant; **Topical:** 2-Propenoic acid, 2-methyl-, butyl ester, polymer with butyl 2-propenoate and methyl 2-methyl-2-propenoate; 2-Propenoic acid, 2-methyl-, polymer with butyl 2-propenoate; Sodium (C14-16) Olefin Sulfonate
Living Building Challenge Criteria: Compliant
I-13 Red List:
■ LBC Red List Free % Disclosed: 100% at 100ppm
□ LBC Red List Approved VOC Content: Not Applicable
□ Declared
I-10 Interior Performance: CDPH Standard Method v1.2-2017
I-14 Responsible Sourcing: Not Applicable

MHK-0001
EXP. 01 AUG 2023
Original Issue Date: 2014

MANUFACTURER RESPONSIBLE FOR LABEL ACCURACY
INTERNATIONAL LIVING FUTURE INSTITUTE™ living-future.org/declare



Declare Red List Free Health Product Declaration Green Label Plus
Mohawk Group is proud to provide products free of Red List chemicals with verified documentation of their impact throughout the life cycle, with Green Label Plus certification for better indoor air quality.



UL Certified EPD

Beyond Carbon Neutral
PLUS an additional 5% for a net-positive impact on the climate.

Net Zero Carbon Emissions by 2040
We’ve signed The Climate Pledge to be net zero by 2040 and have already started major changes to reduce our carbon footprint.

Neutral Is Not Enough
With the holistic improvement of the life cycle of our flooring products – from full product transparency, to reduced water usage in manufacturing, to carbon neutrality and beyond – better is just the beginning.



Better for our world means doing more to stop and reverse climate change.



Colorways

Eden Terrace

Delicate geometry defines Eden Terrace, with diamond chevrons and fine linework that appears softened by time.



737 Natural Linen

London Thyme

Like a time-worn trellis peeking through foliage, London Thyme captures a balance between structure and nature.



737 Natural Linen

Garden Waltz

The interlocking floral motif of Garden Waltz evokes a tranquil walk through gardens in bloom.



737 Natural Linen

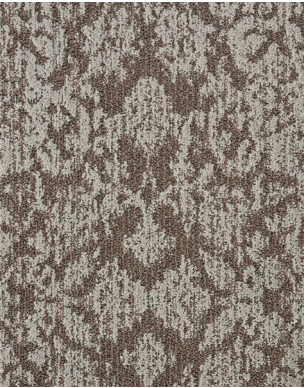
Structured Harmony

Structured Harmony is a contemporary geometric design with a soothing antiqued effect.



737 Natural Linen

Garden Waltz



449 Desert Shadows



545 Winter Solstice



575 Twilight



637 Garden Path



737 Natural Linen



739 Potter's Clay



747 Jute



939 Silver Lining



957 Mysterious



Personal Studio

FLOORING PERSONALIZED BY YOU

Introducing Personal Studio (p.s.), our innovative design personalization tool that allows you to put your own flair to our running line products, so you can make designs as unique as your project.

p.s. was developed to provide you with a tool that will allow you to streamline your efforts and respond quickly.



Visualize In A Room

You can personalize the color in any Abbey Grove pattern, visualize it in a room scene, and order digital, print or physical samples easily.

Discover hundreds of additional patterns that you can personalize with your favorite Abbey Grove colorways to coordinate across your project.

Photorealistic Simulations

Personal Studio uses photorealistic simulations of the cut and loop textures of our PDI Synthesis bases and our CYP, Definity and tufted constructions so your designs are very close to the final product.

Find The Perfect Color

You can quickly iterate through multiple colorways and patterns to find the perfect fit for your project.

Multiple Projects

Save your favorite personalized products per project, and easily switch between them in an easy interface.

Explore: <https://ps.mohawkgroup.com/>

Weldlok®



Weldlok® is Mohawk Group's standard broadloom backing system designed specifically for commercial applications. Weldlok is available with two enhancements: OnGuard and AIR.

Weldlok+OnGuard

- Revolutionary moisture barrier provides a completely seamless, waterproof installation
- No moisture testing required when using NuBroadlok VRT*

Weldlok+AIR

- Advanced cushion backing delivers a 40% reduction in ambient sound
- Enhances comfort underfoot

Performance

- Standard backing designed specifically for commercial applications
- Excellent pattern match capabilities
- For use with direct glue or stretch installations
- 10-year Limited Warranty

Sustainability

- Minimum of 36% pre-consumer recycled content
- May contribute to or comply with LEED credits MR4.0, MR5.0, IEQ4.3 and innovation credit for NSF 140
- Certified Gold in accordance with NSF/ANSI 140
- Certified low VOC's under CRI Green Label Plus Program
- Compliant with LEED EQ4.1 low VOC emitting when installed with Mohawk Group recommended adhesive and seam sealer
- Declare label and HPD information available

Budget

- Standard performance backing system for the most budget conscious projects



Elemental Edges

FINISHING ACCESSORIES



At Mohawk Group we believe in providing project solutions that are easy to select and readily available. Elemental Edges is a complete portfolio of free-to-ship accessories for all your flooring installation and finishing needs. The program is offered in 14 QuickShip colors that coordinate perfectly with our full suite of soft and hard surface products.

Explore more by visiting mohawkgroup.com/products/elemental-edges



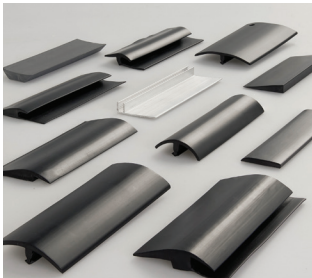
Wall Base

QUICKSHIP

Seamlessly coordinate your wall base and Mohawk Group floor covering from our variety of QuickShip wall base offerings.

AVAILABLE IN

- Rubber
- Vinyl
- 4" or 6" in height
- Coved or straight
- 4' lengths or 96' & 120' rolls
- 1/8" gauge
- .080" gauge (4" Cove vinyl)



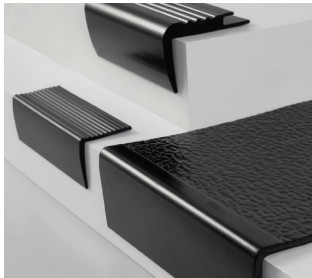
Installation Accessories

QUICKSHIP

Add a functional finishing touch to your coordinated color scheme with Mohawk Group installation accessories. Proprietary Rubber formulations are shrink and crack-proof, and won't fade, even in direct sunlight.

CHOOSE FROM

- Universal Transitions
- Reducers
- Adaptors
- Cove Stick



Stair Solutions

QUICKSHIP

Specify 12.5" regular tread or 20" integrated tread/riser, available in 48" and 72" lengths. Round and hammered finishes are available with standard square nose. All profiles are available with or without visually impaired strips.

CHOOSE FROM

- Stair Treads
- Resilient Landing Tiles
- Risers
- Nosings



Architectural Wall Base

Complement your space with the rich detail of Elemental Edges Architectural Wall Base, offered in a variety of designs, sizes and running line colors. Superior performance and durability allowing your project finishes to remain remarkable.

AVAILABLE IN

- 8 design profiles
- 14 color-coordinated options

Specifications

Eden Terrace (BC588)
Garden Waltz (BC589)
London Thyme (BC590)
Structured Harmony (BC591)

DESIGN

Width	12' (3.66 m)
Surface Appearance	Patterned Tip Shear
Fiber Type	Colorstrand® SD Nylon
Dye Method	Solution Dyed

Colors Available	
Eden Terrace	9
Garden Waltz	9
London Thyme	9
Structured Harmony	9

PERFORMANCE

Construction	Tufted
Gauge	1/12" (47.00 rows per 10cm)
Stain Release Technology	EcoSentry Plus Stain Protection
Soil Release Technology	EcoSentry Soil Protection
Backing Material	Weldlok®
Flammability	ASTM E 648 - Class 1 (Glue Down)
Smoke Density	ASTM E 662 - Less than 450
Static Propensity	AATCC - 134 Under 3.5 KV

SUSTAINABILITY

Certification	Declare Red List Free
Indoor Air Quality	Green Label Plus Certified #8216
NSF 140	Gold
Carbon	Net Positive Carbon (Neutral +5%)

SERVICE

Warranties	Lifetime Limited Wear Warranty, Lifetime Limited Colorfastness to Light, 10 Year Limited Colorfastness to Atmospheric Contaminants, 10 Year Stain Warranty, Lifetime Static
------------	---

Mohawk Group warrants its adhesives for the life of the original installation only when a Mohawk Group style (product) is installed. Mohawk's floor preparation procedures must be followed to ensure that the substrate has been prepared properly. Failure to use Mohawk Group adhesives or to follow Mohawk's floor preparation procedures will void all lifetime adhesive warranties. Please contact your local Sales Representative for installation guidelines.

These patterns contain inherent characteristics which may result in pattern run off and/or pattern appearance variations at the seams or tile edges (darker or lighter pattern lines). These characteristics are inherent in the patterns and are not manufacturing defects. Consideration to these characteristics should be given when selecting an installation method.

Chair pads are recommended under office chairs with roller casters to preserve appearance retention, act as a deterrent toward delamination and to prevent premature or accelerated wear. Walk-off tiles from the Tuff Stuff II Collection are recommended at entryways to reduce soiling.

Mohawk Group is providing this architect folder for the purpose of promoting our commercial business. This folder and its samples shall remain the property of Mohawk Group. Color may vary from dye lot to dye lot. Substitution of material may be made due to improved technology, supply limitations or other factors. The performance of this product is not affected by such variations.

For current and complete specifications please visit www.mohawkgroup.com



Produced with recycled materials