



Vivid Step



Vivid Step draws inspiration from natural wood and stone visuals and features colors ranging from rich warm browns to cool grays. The aesthetically flexible shades and textures are designed to fit any interior. Vivid Step's fusion of ultra-modern character and natural beauty add depth and dimension to a traditional flooring solution.





Vivid Step Wood 863 Roasted Kaffee

Cover: Vivid Step Wood 128 Shimmering Sand, Vivid Step Stone 928 Charcoal Grey, Tactile Infusion 739 Diorite

\*Transition to be used at all flooring adjacencies.



# Textural Effects COORDINATING CARPET TILE

Textural Effects aims to activate our senses and brings a sense of tactility to our day. The desire for soft groundcover visuals such as linen textiles and organic patterns are met with tactility and comfort to sustain us in all types of spaces. All Textural Effects styles provide visual and tactile contrast when used with other finishes that have a smooth surface or high gloss, and they look especially warm and rich with wood hard surfaces.

## FEATURES

---

- Available in two styles: Tactile Infusion and Thematic Thread
- 12" x 36" Carpet Planks
- Duracolor® Tricor Premium Nylon
- EcoFlex™ NXT Backing
- NSF/ANSI 140 Gold
- Living Product Challenge Petal Certified
- Declared Red List Free, EPD and HPD



Tactile Infusion 967 Granite



# Vivid Step Wood & Stone

## FEATURES

---

- 12 Wood colorways and 4 Stone colorways
- Enhanced Urethane finish for wear and scratch resistance
- No-polish maintenance reduces costs associated with long-term cleaning
- Designed to coordinate with a variety of Mohawk Group carpet collections
- FloorScore® certified

### Vivid Step Wood Colorways



128 Shimmering Sand



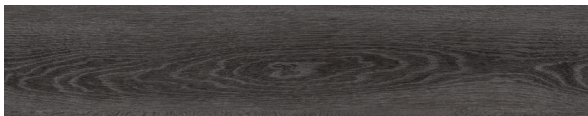
132 Grounded Hatch



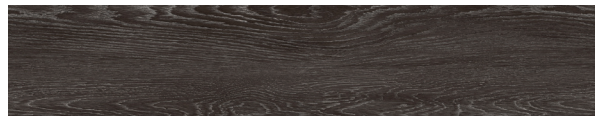
989 Perfect Portobello



979 Deep Gris



863 Roasted Kaffee



754 Sable Birch



959 Turkish Blend



898 Java Hut



746 Beary Brown



723 Vintage Oak

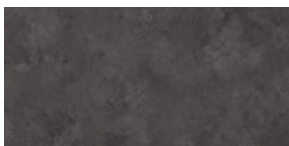


719 Candied Pecan

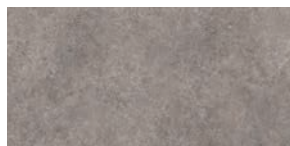


236 Golden Pine

### Vivid Step Stone Colorways



928 Charcoal Grey



919 Carrara Stone



999 Stormy Nights



142 Moon Walk

# Specifications

**Vivid Step Wood CR705**  
**Vivid Step Stone CR706**

## DESIGN

Size	
Vivid Step Wood	Nominal 6" x 48" Actual 152.4mm x 1,210.2mm
Vivid Step Stone	Nominal 12" x 24" Actual 304.8mm x 609.6mm
Overall Thickness	2mm (.079")
Wear Layer	12 mil (0.3mm)
Finish	Enhanced Urethane
Colors Available	
Vivid Step Wood	12
Vivid Step Stone	4
Edge	Bevel
Packaging	
Vivid Step Wood	54 sqft per carton / 27 pcs per carton / 36.55 lbs per carton
Vivid Step Stone	44 sqft per carton / 22 pcs per carton / 29.78 lbs per carton

\*For detailed warranty, adhesive and installation information visit [mohawkgroup.com](http://mohawkgroup.com)

## PERFORMANCE

Construction	Light Commercial Grade Dryback Enhanced Resilient Tile
Classification	ASTM F1700 - Class III, Type A - Smooth, Type B - Embossed
Squareness	ASTM F 2421 - Passes - $\pm 0.10$ " max
Size and Tolerance	ASTM F2421 - Passes - $\pm 0.016$ "/linear foot
Thickness	ASTM F386 - Passes - Nominal $\pm 0.005$ "
Flexibility	A ASTM F137 - Passes - 1" mandrel
Dimensional Stability	ASTM F2199 - Passes - $\leq 0.020$ "/linear foot
Static Load Limit	ASTM F970 - Passes, modified at 1000 psi
Residual Indentation	ASTM F1914 - Passes - Average less than 8% maximum single reading 10%
Resistance to Chemicals	ASTM F925 - Passes - No change or Slight Change
Resistance to Light	ASTM F1515 - Passes - $\Delta E \leq 8$
Resistance to Heat	ASTM F1514 - Passes - $\Delta E \leq 8$
Critical Radiant Flux	ASTM E648 - Passes - $\geq 0.45$ watts/cm <sup>2</sup> , Class 1
Smoke Density	ASTM E662 - Passes Part A - Less than 450

## SUSTAINABILITY

Certification	FloorScore® Certified
---------------	-----------------------

**Mohawk Group**

Mohawk Group  
160 South Industrial Blvd.  
Calhoun, GA. 30701  
1-800-554-6637  
mohawkgroup.com

CR705 PHOTO BROCHR LT