



Sakiori

Hemstitch Linked Weave



Sakiori (*să·key·or·ē*)

A traditional Japanese weaving technique, in which scraps of cloth are woven together to create a new textile.

Sakiori weaving combines multiple pieces of fabric into a single textile. So, too, the Sakiori collection by Mohawk Group combines the best attributes of hard surface and soft surface floor coverings into a single flooring solution.

Planks and tiles from the Sakiori collection unite a durable resilient construction with the comforting aesthetic of a woven textile. This innovative flooring product delivers warmth and refined texture, softened acoustics and endless layout possibilities, all while being easy to care for and suitable for heavy traffic.





Sakiori

Sakiori woven luxury vinyl tile provides all types of spaces with the cleanability and durability of hard surface flooring plus the comforting sensory experience of artisanal texture.

GLUE DOWN LUXURY VINYL TILE CONSTRUCTION

Sakiori luxury vinyl tile feature a 20 mil commercial wear layer, M-Force™ Finish for stain resistance and soft, surface absorbing sound.

- Certified non-toxic, ortho-phthalate free
- M-Force Finish applied to resist stain by not absorbing liquids; therefore, making spills quick and easy to clean
- Approved for heavy commercial use
- Low maintenance
- Slip resistant woven fabric surface
- Consistent product thickness by patterns and size for mixing and matching different patterns
- Clean-cut finishing to prevent fraying
- Colorfast guaranteed

Featuring a neutral palette and three patterns influenced by artisanal sakiori textures, Sakiori by Mohawk Group provides the ideal balance of traditional artistry and modern style.

The Sakiori collection offers a traditional weave, a multi-width cord-like weave, and a vertical striated weave. The collection's coordinating color palette allows for mixing and matching to create unique installations to provide an elegant tactility in otherwise sleek environments.

M-Force™ Finish

Sakiori Woven Fabric with Extra Sound Absorption

Heavy Commercial Wear Layer

Commercial Base

Stabilizing Backing Layer

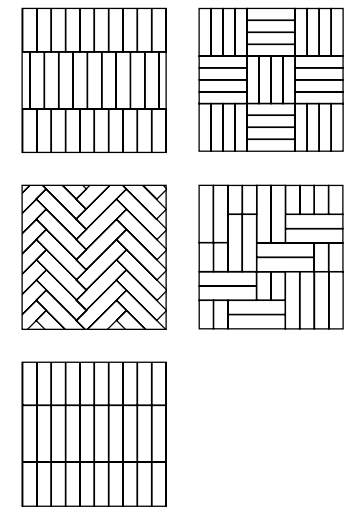
STYLES

Hemstitch | 6 Colors | 9.25" X 59.25"
Linked | 6 Colors | 9.84" X 39.37"
Weave | 6 Colors | 18" X 36"



Linked

The Linked style emulates the skillful recombination of materials in sakiori weaving, producing a variegated linear pattern in rich blends of color and nubby, comforting textures. The medium-length plank format is well-scaled for unexpected layout designs in small and large spaces alike.



Linked 9.84" x 39.37"



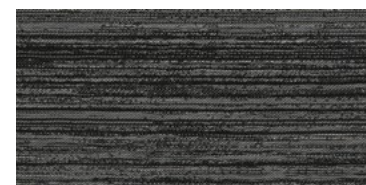
Linked 729 Sukumo



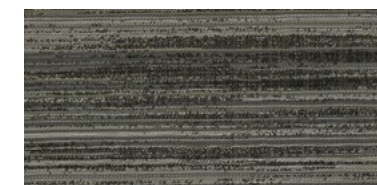
Linked 889 Raffia



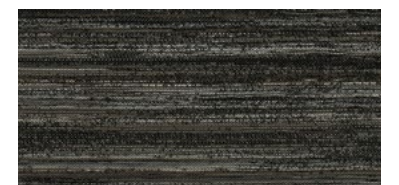
Linked 979 Immensus



Linked 859 Mola



Linked 935 Vestige



Linked 868 Chilkat



Linked 729 Sukumo
9.84" x 39.37" | Herringbone Installation

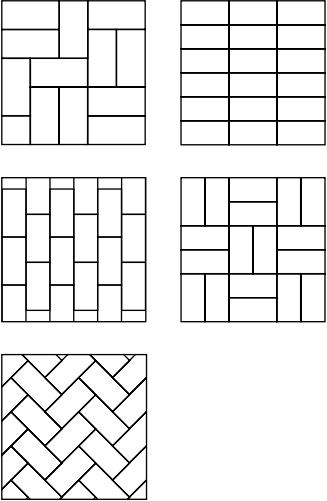


Linked 729 Sukumo
9.84" x 39.37" | Herringbone Installation



Weave

Weave provides a quietly dimensional texture of linear slubs and striations emerging from a gentle blend of colors. The 18"x36" tile size offers unique layout options to play off the calm, directional patterning.



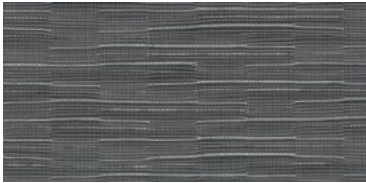
Weave 18" x 36"



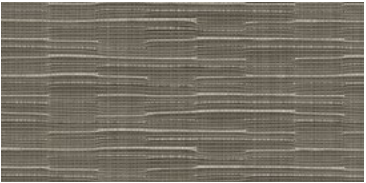
Weave 729 Icansi



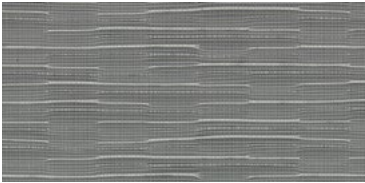
Weave 889 Aguayus



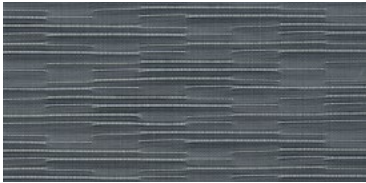
Weave 979 Serape



Weave 859 Zanshi



Weave 935 Mbongolo



Weave 365 Aizome

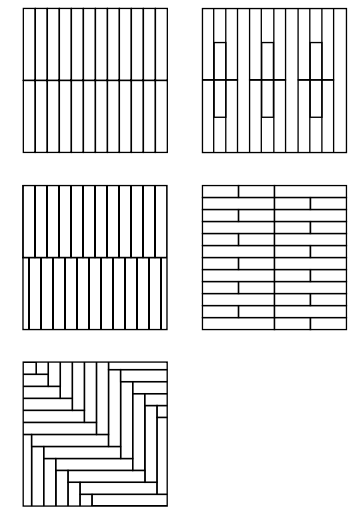


Weave 729 Icansi, Spirit Moderne QTWFA71499-MW463
18" x 36" | Brick Installation



Hemstitch

Hemstitch evokes the softness of a washed textile, with tonal striations undulating across the width of each plank. The combination of a softly organic texture and a long plank format allows for the development of subtle yet intriguing large-scale patterns.



Hemstitch 9.25" x 59.25"



Hemstitch 729 Kapa



Hemstitch 889 Mosotho



Hemstitch 979 Lowveld



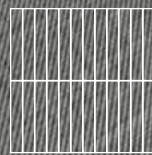
Hemstitch 868 Huiipils



Hemstitch 935 Jerga



Hemstitch 753 Nedoko



Hemstitch 935 Jerga, 979 Lowveld
9.25" x 59.25" | Ashlar Installation



Extend & Protect THE LIFE OF YOUR FLOOR

Performing proper maintenance on your flooring will help to extend the life of your flooring and ensure your investment is protected.

CLEANING

- Most dirt comes from outdoors. Installing well suited doormats will prevent 80% of the potential dirt and moisture from penetrating the premises. To remain effective, doormats should be vacuumed daily.
- Choose color carefully based on where the flooring will be used.
- Never use acetone or polish on flooring.
- For daily cleaning, we recommend vacuum cleaning.

REGULAR CLEANING

- Vacuum your flooring regularly to keep dust to a minimum.
- Stains/spills should be cleaned up as quickly as possible, and then rinsed with clean water. (see recommendations for stain removal below).

MANUAL CLEANING

- Manual cleaning should take place in smaller areas or in areas where machines cannot access. Periodic cleaning should be carried out regularly.
- Use a scrubbing brush, lukewarm water and all purpose neutral cleaner with a pH of 7-8.5.
- Wet vacuum or dry with soft/microfiber cloth.

STAINS

- For best results, stains should be dealt with immediately.
- Never use acetone, trichloroethylene, wax, greasy detergent or nail polish remover. Use a scrubbing brush and rinse with water.

STAINS	STAIN REMOVERS
Traces of acrylic and/or paint	Isopropyl / Denatured Alcohol. After applying the solvent, carefully wipe the flooring.
Drop of paint or chewing gum	Use a freeze spray and then delicately remove the paint/gum with a spatula.
Wine, beer, non-alcoholic beverages,	Hot water and a neutral cleaning agent with a few drops of ammonia if necessary.
Chocolate, oil, coffee/tea, grease, tar	Hot water and powerful alkaline detergent.
Shoe/scuff marks	Isopropyl / Denatured Alcohol. After applying the solvent, carefully wipe the flooring.
Ink, ball-point pen, marker, lipstick	Rinse thoroughly.
Rust	Rub with a dry rag.
Blood	Isopropyl / Denatured Alcohol.
Cigarette burns	A neutral cleaning agent and 10% oxalic acid, cold water and ammonia. Scrape with a spatula and then apply a few drops.

For full details, visit the technical resources section at mohawkgroup.com

Specifications

Sakiori Collection

Hemstitch (CR710), **Weave** (CR709), **Linked** (CR708)

DESIGN

Size	
Hemstitch	9.25" x 59.25" (235mm x 1505mm)
Weave	18" x 36" (457.2mm x 914.4mm)
Linked	9.84" x 39.37" (250mm x 1000mm)
Overall Thickness	3mm (.12")
Colors Available	18
Packaging	
Hemstitch	38.07 sqft per carton / 10 pcs per carton / 40.1 lbs per carton
Weave	36 sqft per carton / 8 pcs per carton / 37.92 lbs per carton
Linked	43.06 sqft per carton / 16 pcs per carton / 45.44 lbs per carton

*For detailed warranty, adhesive and installation information visit mohawkgroup.com

PERFORMANCE

Construction	Commercial Grade Dryback Enhanced Resilient Tile
Classification	ASTM F1700 - Class II—Surface-Decorated Vinyl Tile, Type A—Smooth Surface
Squareness	ASTM F 2421 - Passes - $\pm 0.10"$ max
Size and Tolerance	ASTM F2421 - Passes - $\pm 0.016"/$ linear foot
Thickness	ASTM F386 - Passes - as specified $\pm 0.005"$
Flexibility	ASTM F137 - Passes - 1" mandrel
Dimensional Stability	ASTM F2199 - Passes - 0.020"/linear foot max
Static Load Limit	ASTM F970 - Passes, modified at 1500 psi
Residual Indentation	ASTM F1914 - Passes - Average less than 8% maximum single reading 10%
Resistance to Chemicals	ASTM F925 - Passes - No more than a slight change
Resistance to Light	ASTM F1515 - Passes $\Delta E \leq 8$
Resistance to Heat	ASTM F1514 - Passes $\Delta E \leq 8$
Critical Radiant Flux	ASTM E648 - Class 1 (>0.45 W/cm ²)
Smoke Density	ASTM E662 Part A - Less than 450

SUSTAINABILITY

Certification	FloorScore® Certified
---------------	-----------------------

