

Relaxing Floors

chillD restD mellowD Fractal Ground



Seemingly random shapes and forms found in nature often appear haphazard. But upon closer inspection, there is a structure underlying these natural arrangements. And as we look closer and closer, the patterns repeat over and over. These are fractals.

When we look at a tree, first we see big branches growing out of the trunk, then we see smaller branches growing out of each big branch. As we keep zooming in, finer and finer branches appear, all the way down to the smallest twigs.

In basing design on the stress-reductive quality found in fractals, the transdisciplinary team of 13&9 Design, Fractals Research, and Mohawk Group are tapping into our deep-seated desire to see patterns, to connect to nature and to have more inspiring and relaxing environments in which to live and work.





Collaborators

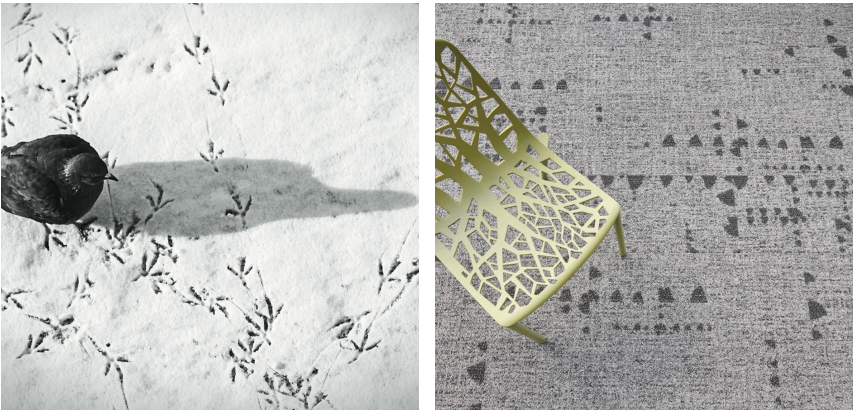
DESIGNERS, THINKERS, MAKERS



Left to right: Richard Taylor, PHD, Founder of Fractals Research; Jackie Dettmar, VP of Design and Product Development, Mohawk Group; Anastasija and Martin Lesjak, CEOs, 13&9 Design.

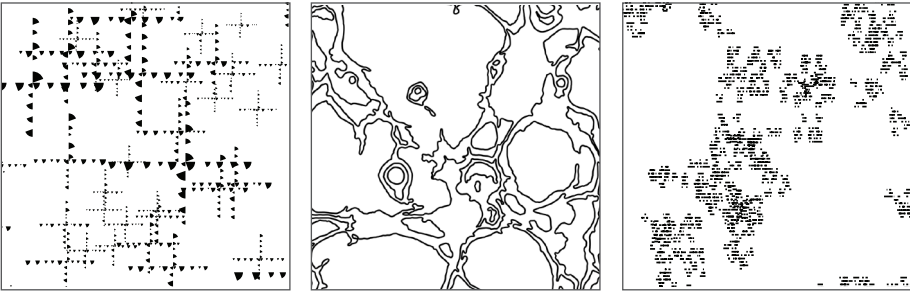
Fractals are the building blocks of many of nature’s patterns and have been scientifically proven to reduce stress and so provide benefits to physical health. This visual language is the basis for Relaxing Floors, a modular system designed by 13&9 in collaboration with Fractals Research and Mohawk Group.

Relaxing Floors is the culmination of art, science and human-centered design based on fractal patterns. Utilizing fractals gives our eyes a break from the digital world and delivers the essence of nature to the contract build environment.



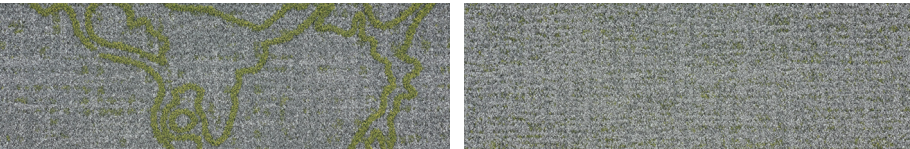
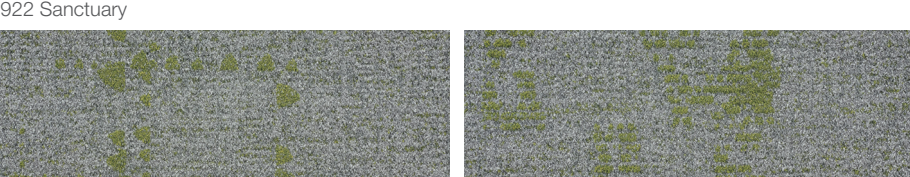
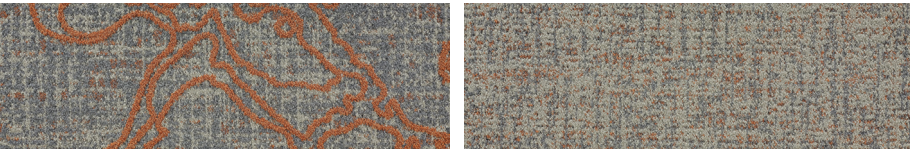
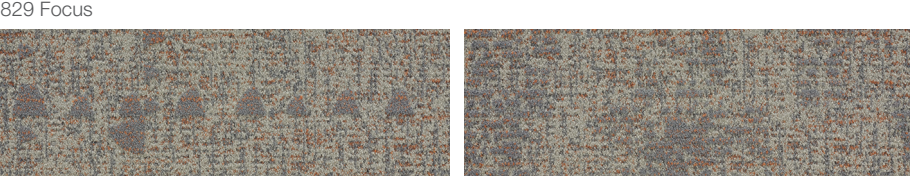
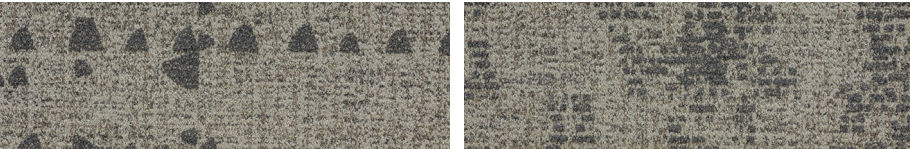


Although all fractals are complex, the level of complexity varies between patterns. This complexity is measured by a parameter labeled D. Patterns with mid-range complexity—a mid-D value—are the most common in natural scenery and it is these patterns that reduce the observer’s stress-levels. All of the Relaxing Floors patterns have been optimized to have a mid-D value—as denoted by the “D” suffix on each of the pattern names.



chillD is a computer generated fractal visual grounded by triangular segment-shaped seeds. *restD* is an organic design in which neurons twist and turn as they weave across the carpet. *mellowD* utilizes a line-shaped seed which repeats at different magnifications.

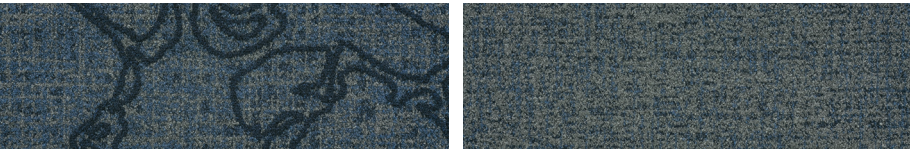
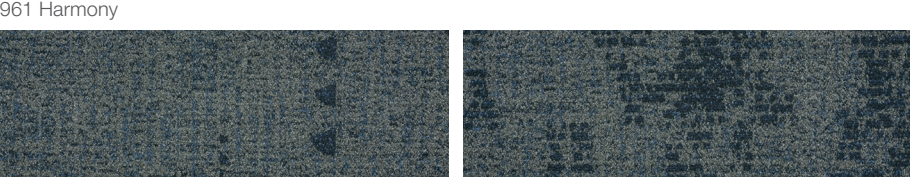
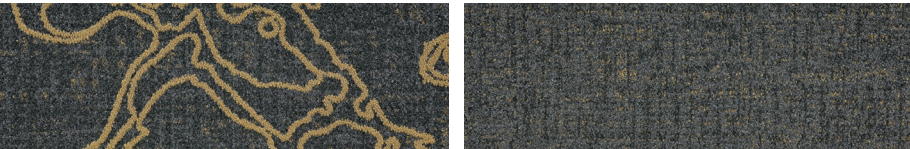
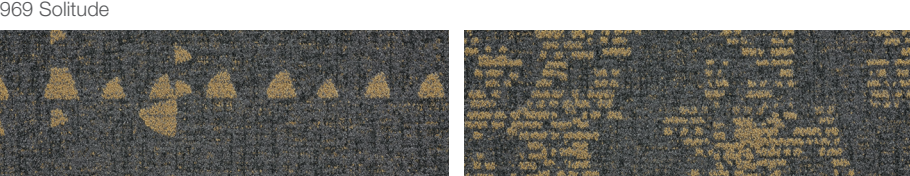
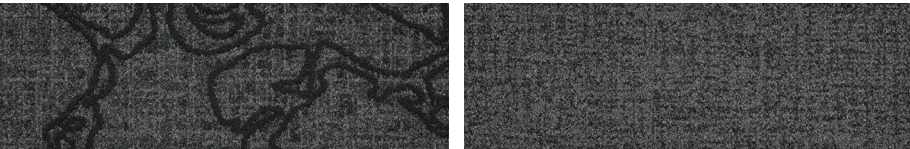
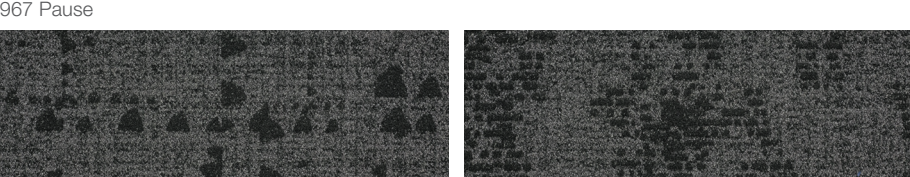
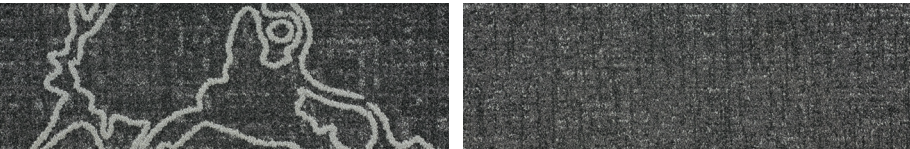
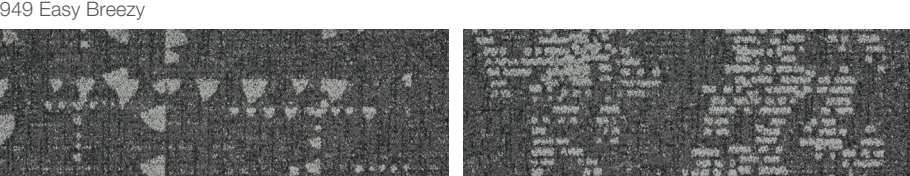
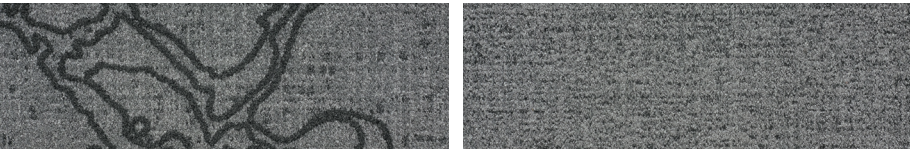
Fractal Ground offers a coordinating organic groundcover visual that may be used with any of the other patterns or by itself.



829 Focus

922 Sanctuary

946 Awakening



949 Easy Breezy

967 Pause

969 Solitude

961 Harmony

965 Blue Bliss



child 965 Blue Bliss (Brick Ashlar Installation)
Opposite: Fractal Ground 949 Easy Breezy (Brick Ashlar Installation)



Specifications

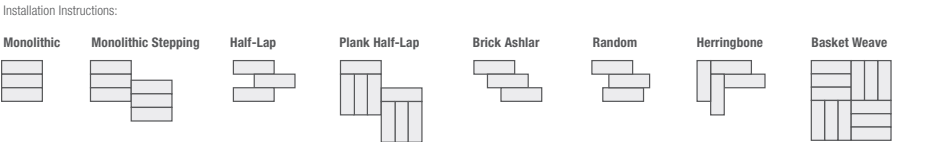
Relaxing Floors Collection
chillD (GT424), **Fractal Ground** (GT425), **mellowD** (GT426), **restD** (GT427)
Carpet Plank

DESIGN	
Size	12 in x 36 in (.3048 m x .9144 m)
Surface Appearance	Textured Patterned Multi-Colored Loop
Fiber Type	Duracolor® Tricor Premium Nylon
Dye Method	Solution Dyed
Installation Methods	Monolithic / Monolithic Stepping / Half-Lap / Plank Half-Lap / Brick Ashlar / Random / Herringbone / Basket Weave
Colors Available	8

PERFORMANCE	
Construction	Tufted
Gauge	1/12" (47.00 rows per 10cm)
Stain Release Technology	Permanent, Built into the Fiber
GSA Stain Release Rating	Passes
Soil Release Technology	EcoSentry Soil Protection
Backing Material	EcoFlex™ ONE
Flammability	(ASTM E 648) Class 1 Glue Down
Smoke Density	(ASTM E 662) < 450
Static Propensity	(AATCC - 134) < 3.5 KV
Fractal D Value (chillD)	1.47
Fractal D Value (mellowD)	1.56
Fractal D Value (restD)	1.63

SUSTAINABILITY	
Certification	Living Product Challenge Petal Certified; Declare Red List Free
Indoor Air Quality	Green Label Plus Certified #1171
NSF 140	Platinum
Carbon	Net Positive Carbon (Neutral +5%)
Water	Net Positive Water (Neutral +5%)

SERVICE	
Warranties	Lifetime Limited Carpet Tile Warranty, Lifetime Limited Duracolor Stain Warranty, Lifetime Static



Mohawk Group warrants its adhesives for the life of the original installation only when a Mohawk Group style (product) is installed. Mohawk's floor preparation procedures must be followed to ensure that the substrate has been prepared properly. The use of Mohawk branded adhesives is required to ensure optimum results and are the only approved adhesives warranted by Mohawk. Please contact your local Sales Representative for installation guidelines.

These patterns contain inherent characteristics which may result in pattern run off and/or pattern appearance variations at the seams or tile edges (darker or lighter pattern lines). These characteristics are inherent in the patterns and are not manufacturing defects. Consideration to these characteristics should be given when selecting an installation method.

Chair pads are recommended under office chairs with roller casters to preserve appearance retention, act as a deterrent toward delamination and to prevent premature or accelerated wear. Walk-off tiles from the Tuff Stuff II Collection are recommended at entryways to reduce soiling.

Mohawk Group is providing this architect folder for the purpose of promoting our commercial business. This folder and its samples shall remain the property of Mohawk Group. Color may vary from dye lot to dye lot. Substitution of material may be made due to improved technology, supply limitations or other factors. The performance of this product is not affected by such variations.

For current and complete specifications please visit www.mohawkgroup.com

RECYCLER
RECYCLING PROGRAM
877-3RE-CYCL

Produced with recycled materials

Introspective Thoughts, 939 Charlotte
(shown as area rug with Serged Edge Treatment)



Mohawk Group

Mohawk Group
160 South Industrial Blvd.
Calhoun, GA, 30701
1-800-554-6637
mohawkgroup.com

MG737 12PG BROCHR LT