



MultiSensory

Spectral View Loomed Harmony



# MultiSensory

In the Digital Age, tactility has taken on a more urgent role in human experience. Our sense of touch has expanded from its original function as tool of survival to one of connection, perception, and emotion. Our reliance on screens and keyboards has caused a shift where materials and textures are needed to provide sensory stimulation and comfort.

The MultiSensory collection explores varying degrees of texture that make us reconnect with the touch and feel of nature, inviting relaxation, emotional warmth, comfort, and wellness. The collection has an authentically biophilic appearance and feel, combining the natural visual of wool with the high-performance benefits of Mohawk Group's Heathered Hues solution-dyed Duracolor® Tricor fiber. With its plush textures and sophisticated 30+ ounce weights, the MultiSensory collection offers a luxurious feeling underfoot that delights and inspires.



Learn more at [mohawkgroup.com](https://mohawkgroup.com)

Cover: Spectral View, 838 Soft Umber, 859 Mist Veil,  
877 Hushed Bronze, Custom Installation





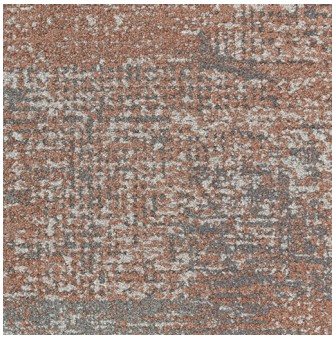




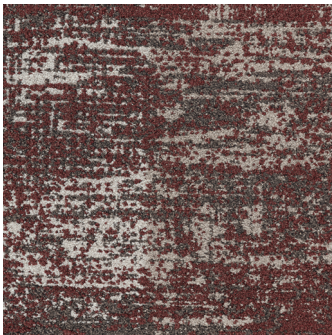


# Spectral View COLORWAYS

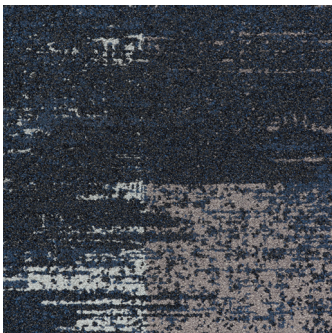
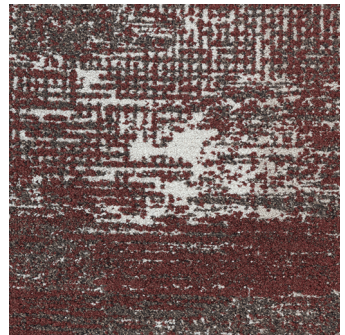
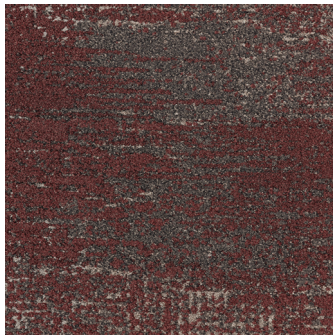
Spectral View is a 24" x 24" carpet tile with a shifting gradient pattern created with a rolling thread-up, which gives the look of additional accent colors in a mix of high and low contrast. Each color family can be used alone or mixed with others to create unique installations of variegated graphic texture. Available in a 30 ounce tufted weight.



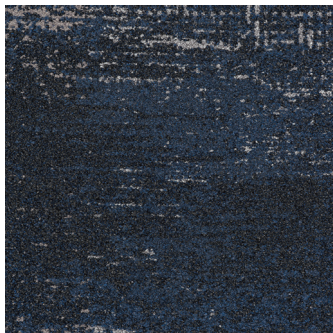
232 Flecked Ember



373 Veiled Merlot



565 Midnight Ink





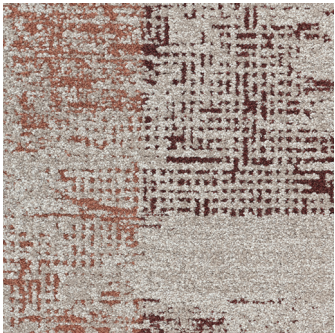
656 Faded Moss



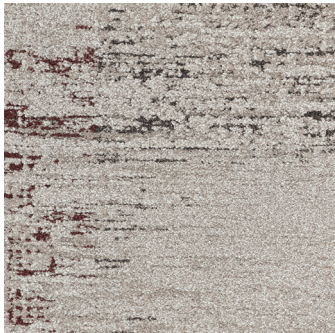
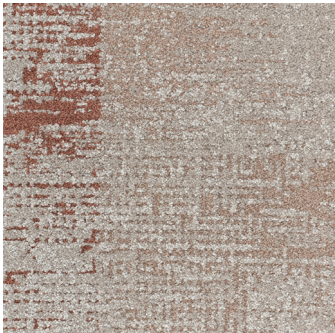
747 Alabaster Fade



838 Soft Umber

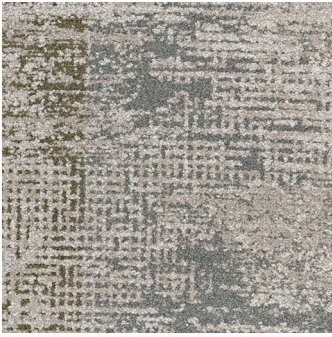


843 Blush Trace

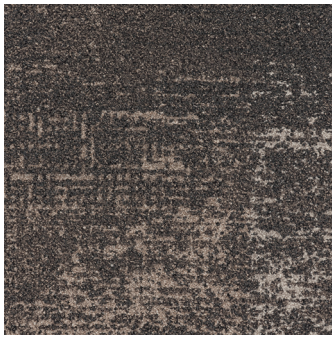
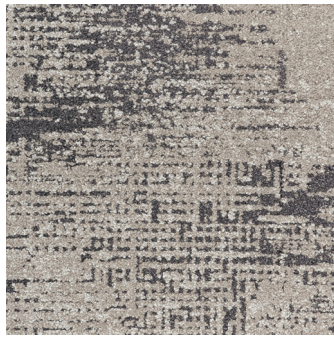
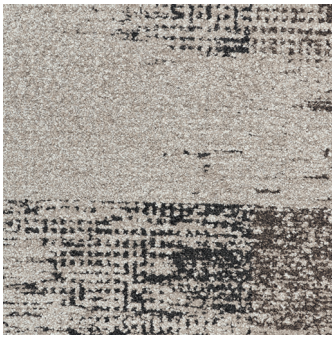




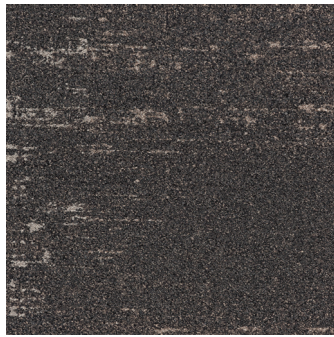
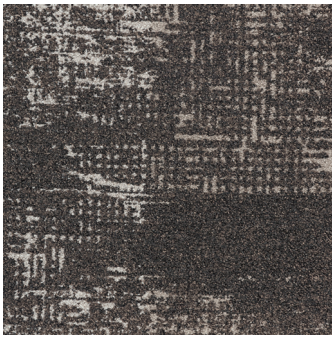
846 Mosslight



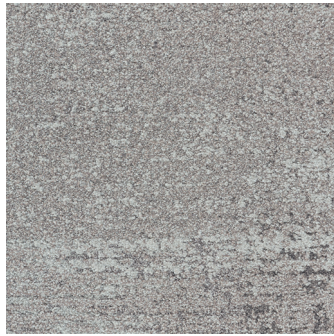
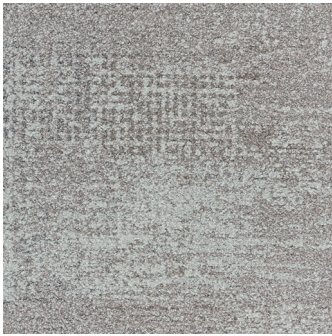
859 Mist Veil

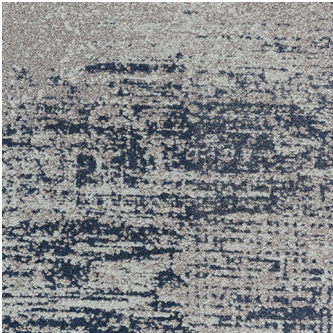


877 Hushed Bronze

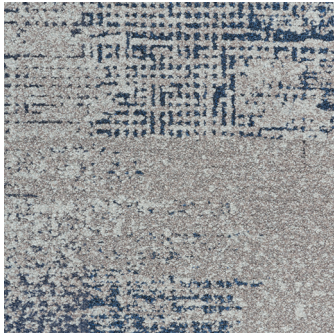
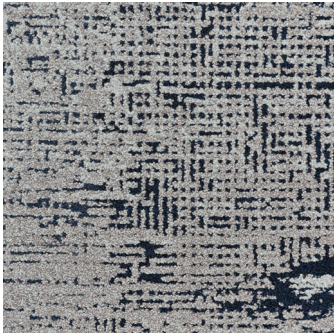


938 Ashen Fable

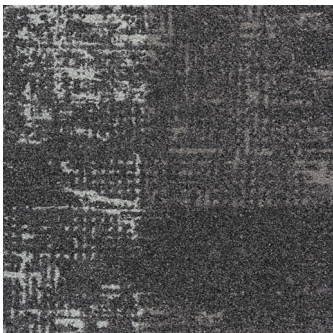
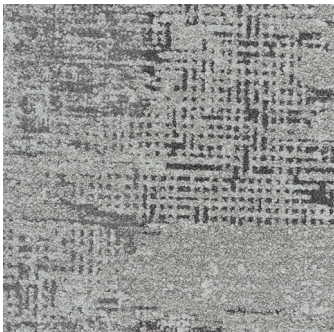




945 Cloudform



959 Slate Whisper



977 Greystone





Loomed Harmony, 426 | HW102 Running Line Rug with Hand Knotted Edge  
Bolder 2.5 | 5.0, 859 Aura

# Loomed Harmony

RUNNING LINE RUG

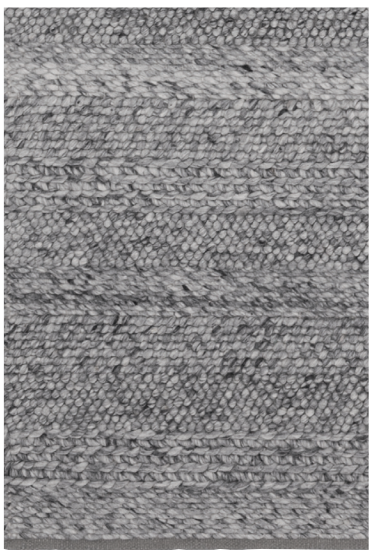
The MultiSensory collection includes a hand woven area rug called Loomed Harmony, offering extreme texture through large, dense loops made from 90% wool. Subtle stripes are visible through the juxtaposition of weave types. Available in four colors and two sizes: 5'x8' and 9'x12'.



426 | HW102



925 | HW101



131 | HW103



105 | HW100



# Better for People and Planet

Our future depends on the work we do today. At Mohawk Group, commitment to our planet extends beyond just products and processes: it's how we challenge ourselves to do and be better every day, how we make decisions, how we reinvest in our people and our planet, and how we define what matters most as we work to deliver value for generations to come.



**better  
for  
people**

## Human Health

**Health Product Declaration**  
**Declare Red List Free**  
**Green Label Plus Certified**

Mohawk Group is proud to provide products free of Red List chemicals with verified documentation of their impact throughout the lifecycle, with Green Label Plus certification for better indoor air quality.



**better  
for the  
planet**

## Climate Health

**UL Certified EPD**



**Living Product Challenge Certified**

MultiSensory carpet tile is net-positive +5% for carbon and water and achieves LPC Certification from Living Future by complying with multiple imperatives of all seven petals..

**Net Zero Carbon Emissions by 2040**

We've signed The Climate Pledge to be net zero by 2040 and have already started major changes to reduce our carbon footprint.

## Circular Economy

**End of Life Options**

Salvageable/Reusable in its Entirety  
Take Back Program (ReCover)

## Ecosystem Health

**Neutral Is Not Enough**

With the holistic improvement of the lifecycle of our flooring products – from full product transparency, to reduced water usage in manufacturing, to carbon neutrality and beyond – better is just the beginning.

**Beyond Carbon Neutral**

Carbon neutral plus an additional 5% carbon offset for a net-positive impact on the environment.

**Beyond Water Neutral**

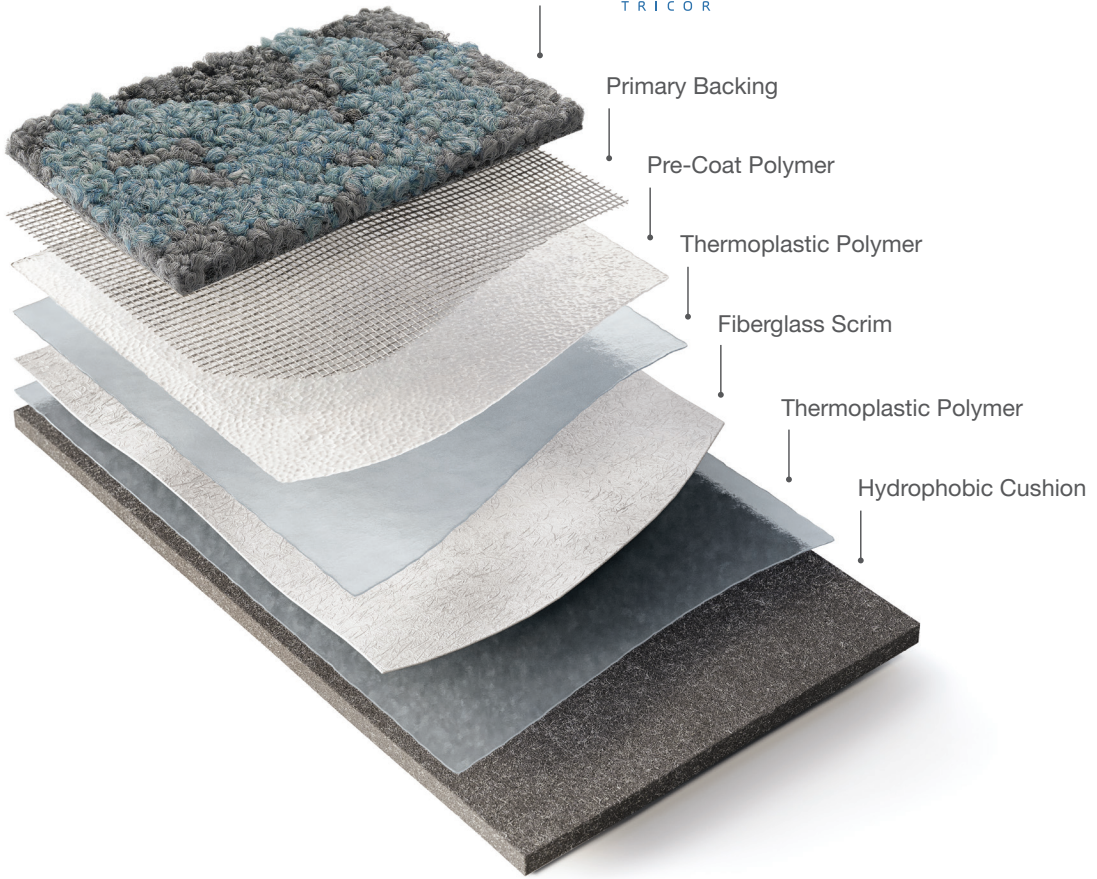
All Mohawk Group carpet tiles are water neutral plus an additional 5% water offset for a net-positive impact on the environment.







**duracolor**  
TRICOR



# EcoFlex™ ONE

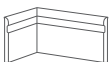
ALL-IN-ONE FLOORING SOLUTION

Every element in the EcoFlex™ ONE construction has purpose, and combined they form the industry's leading modular carpet solution. The hydrophobic PET cushion, backing layers, and Duracolor® Tricor fiber are engineered with your end-goals in mind: to optimize your investment, be sustainably made, and provide a better occupant experience.

## KEY FEATURES

- Better Acoustics
- Enhanced Comfort
- Worry-Free Installation
- Simplified Maintenance
- NSF 140 Platinum
- Carbon Neutral +5%
- Limited Lifetime Warranty

EcoFlex™ ONE is a unified solution to the wide range of needs in your spaces. This advanced backing system improves every aspect of comfort and acoustics while eliminating moisture testing—all with a lighter environmental footprint that is carbon neutral plus an additional 5% offset. Tested and proven, EcoFlex™ ONE is the holistic solution for human-centric environments.



**Elemental Edges**  
Wall Base

Elemental Edges is a portfolio of architectural and cove wall base for your finishing needs. Featuring a range of colors that coordinate with our full product line, Elemental Edges also offers 14 stocked colors in cove wall base.



# Specifications

CARPET TILE

Spectral View (GT375)

DESIGN

Size	24" x 24"
Surface Appearance	Textured Patterned Loop
Fiber Type	Duracolor® Tricor Premium Nylon
Dye Method	Solution Dyed
Colors Available	14

PERFORMANCE

Construction	Tufted
Gauge	1/12" (47.00 rows per 10cm)
Tufted Weight	30 oz/yd² (1,017 g/m²)
Stain Release Technology	Permanent, Built into the Fiber
Soil Release Technology	EcoSentry Soil Protection
Backing Material	EcoFlex™ ONE
Flammability	ASTM E 648 - Class 1 (Glue Down)
Smoke Density	ASTM E 662 - Less than 450
Static Propensity	AATCC - 134 Under 3.5 KV

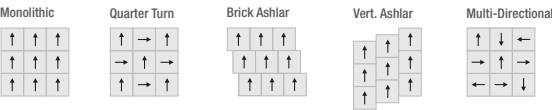
SUSTAINABILITY

Certification	Declare Red List Free
Indoor Air Quality	Green Label Plus Certified #1171
NSF 140	Platinum
Carbon	Net Positive Carbon (Neutral +5%)
Water	Net Positive Water (Neutral +5%)

SERVICE

Warranties	Lifetime Limited Carpet Tile Warranty, Lifetime Limited Duracolor® Stain Warranty, Lifetime Static
------------	--

Installation Instructions:



**RECOVER**  
RECYCLING PROGRAM

Through Mohawk's ReCover Recycling Program over 160 million pounds of flooring has been diverted from landfills and giving a second life. We accept flooring from any manufacturer and will manage your entire recycling process.



Produced with recycled materials

