



MultiSensory

Dimensional Fade Whispered Layers Sensory Grain



MultiSensory

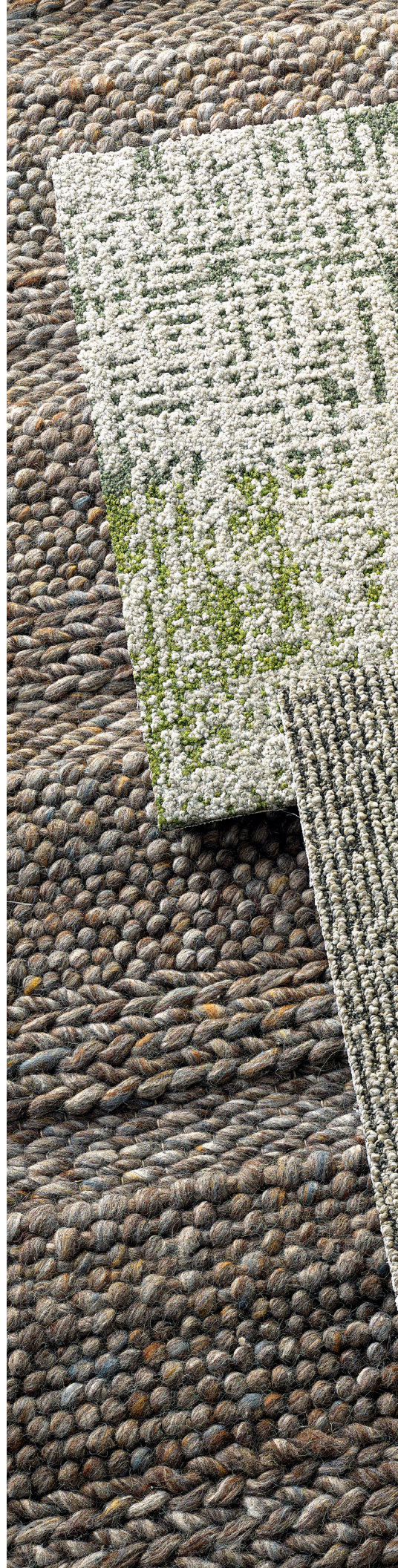
In the Digital Age, tactility has taken on a more urgent role in human experience. Our sense of touch has expanded from its original function as tool of survival to one of connection, perception, and emotion. Our reliance on screens and keyboards has caused a shift where materials and textures are needed to provide sensory stimulation and comfort.

The MultiSensory collection explores varying degrees of texture that make us reconnect with the touch and feel of nature, inviting relaxation, emotional warmth, comfort, and wellness. The collection has an authentically biophilic appearance and feel, combining the natural visual of wool with the high-performance benefits of Mohawk Group's Heathered Hues solution-dyed Duracolor® Tricor fiber. With its plush textures and sophisticated 30+ ounce tufted weights, the MultiSensory collection offers a luxurious feeling underfoot that delights and inspires. All modular and broadloom styles are offered in 14 colorways, from warm and cool neutrals to deep, saturated tones that set the stage for the rich textures.



Learn more at mohawkgroup.com

Cover: Dimensional Fade, 848 Feathered Clay,
Whispered Layers, 848 Feathered Clay
Quarter Turn Installation







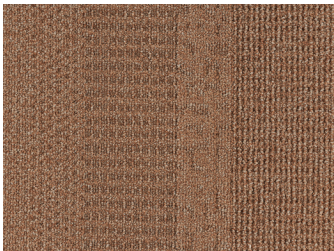




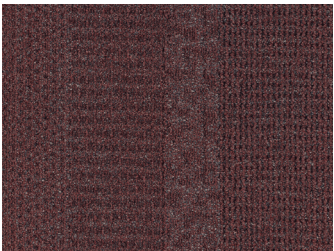
Dimensional Fade

CARPET TILE

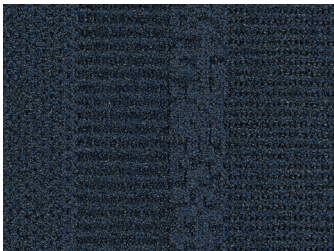
24" x 24" carpet tile with a multi-textural pattern created from varying tones and textures that evoke tactility. Available in 14 colors with a 42 ounce tufted weight.



242 Molten Sienna



363 Autumn Glow



575 Ocean Breeze



646 Woodland Hush



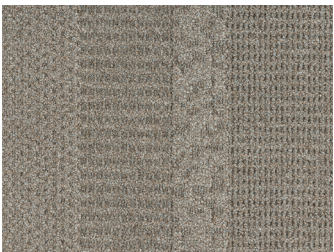
737 Smoked Linen



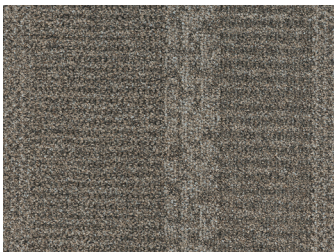
827 Driftwood Echo



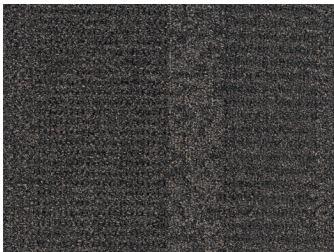
831 Gilded Honey



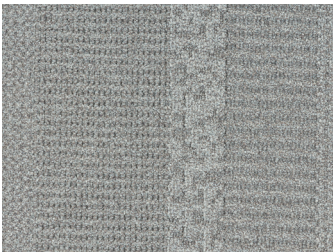
848 Feathered Clay



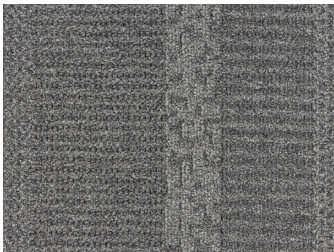
868 Oud Reflection



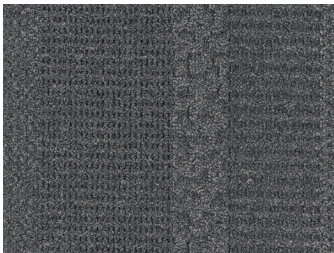
878 Cedar Mirage



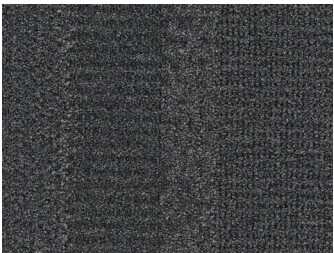
929 Wistful Mountain



939 Silken Steel



969 Echoing Granite



989 Spiced Noir



beateque
vivere

Dimensional Fade, 646 Woodland Hush
Custom Installation



Whispered Layers, 848 Feathered Clay
Custom Installation

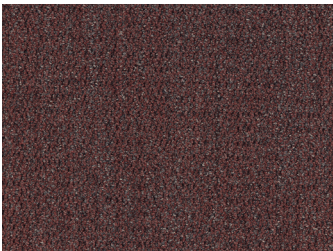
Whispered Layers

CARPET TILE

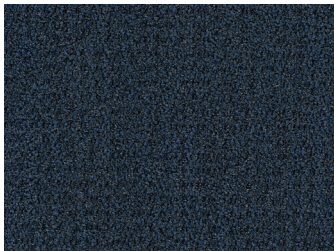
24" x 24" carpet tile that has an allover field texture to use alone or coordinate with Dimensional Fade. Available in 14 colors with a 34 ounce tufted weight.



242 Molten Sienna



363 Autumn Glow



575 Ocean Breeze



646 Woodland Hush



737 Smoked Linen



827 Driftwood Echo



831 Gilded Honey



848 Feathered Clay



868 Oud Reflection



878 Cedar Mirage



929 Wistful Mountain



939 Silken Steel



969 Echoing Granite



989 Spiced Noir



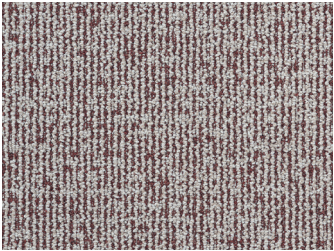
Sensory Grain

BROADLOOM

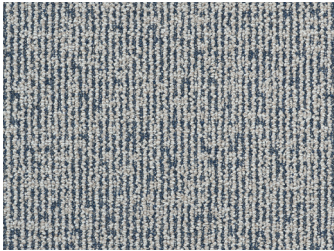
Sensory Grain is a tufted broadloom with a small scale, allover texture that has a subtle mix of high and low contrast. Available in 14 colors with a 38 ounce tufted weight.



242 Auburn Mist



363 Crimson Haze



575 Inkwell Drift



646 Olive Smoke



737 Alabaster Hush



827 Dune Mirage



831 Heirloom Putty



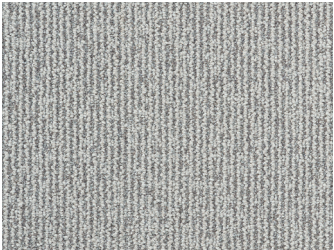
848 Windswept Fawn



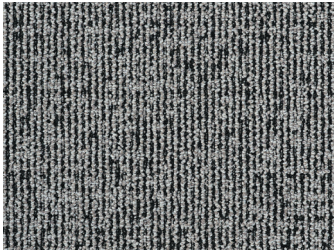
868 Muted Umber



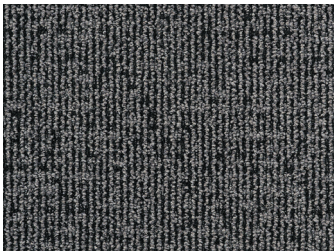
878 Stormed Bronze



929 Quiet Hearth



939 Cinderplume



969 Earthen Charcoal



989 Obsidian Thread





Loomed Harmony, 426 | HW102 Running Line Rug with Hand Knotted Edge

Loomed Harmony RUNNING LINE RUG

The MultiSensory collection includes a hand woven area rug called Loomed Harmony, offering extreme texture through large, dense loops made from 90% wool. Subtle stripes are visible through the juxtaposition of weave types. Available in four colors and two sizes: 5' x 8' and 9' x 12'.



Better for People and Planet

Our future depends on the work we do today. At Mohawk Group, commitment to our planet extends beyond just products and processes: it's how we challenge ourselves to do and be better every day, how we make decisions, how we reinvest in our people and our planet, and how we define what matters most as we work to deliver value for generations to come.



Human Health

Health Product Declaration
Declare Red List Free
Green Label Plus Certified

Mohawk Group is proud to provide products free of Red List chemicals with verified documentation of their impact throughout the lifecycle, with Green Label Plus certification for better indoor air quality.



Climate Health

UL Certified EPD



Living Product Challenge Certified

MultiSensory carpet tile is net-positive +5% for carbon and water and achieves LPC Certification from Living Future by complying with multiple imperatives of all seven petals.

Net Zero Carbon Emissions by 2040

We've signed The Climate Pledge to be net zero by 2040 and have already started major changes to reduce our carbon footprint.

Circular Economy

End of Life Options

Salvageable/Reusable in its Entirety
Take Back Program (ReCover)

Ecosystem Health

Neutral Is Not Enough

With the holistic improvement of the lifecycle of our flooring products – from full product transparency, to reduced water usage in manufacturing, to carbon neutrality and beyond – better is just the beginning.

Beyond Carbon Neutral

Carbon neutral plus an additional 5% carbon offset for a net-positive impact on the environment.

Beyond Water Neutral

All Mohawk Group carpet tiles are water neutral plus an additional 5% water offset for a net-positive impact on the environment.





Specifications

BROADLOOM

Sensory Grain (GL374)

DESIGN

| | |
|--------------------|---------------------------------|
| Width | 12' width (3.66 m) |
| Pattern Repeat | 36" (W) x 48" (L) |
| Surface Appearance | Textured Patterned Loop |
| Fiber Type | Duracolor® Tricor Premium Nylon |
| Dye Method | Solution Dyed |
| Colors Available | 14 |

PERFORMANCE

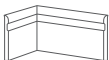
| | |
|--------------------------|----------------------------------|
| Construction | Tufted |
| Gauge | 1/12" (47.00 rows per 10cm) |
| Tufted Weight | 38 oz/yd² (1,288 g/m²) |
| Stain Release Technology | Permanent, Built into the Fiber |
| Soil Release Technology | EcoSentry Soil Protection |
| Backing Material | Unibond® Plus |
| Flammability | ASTM E 648 - Class 1 (Glue Down) |
| Smoke Density | ASTM E 662 - Less than 450 |
| Static Propensity | AATCC - 134 Under 3.5 KV |

SUSTAINABILITY

| | |
|--------------------|-----------------------------------|
| Certification | Declare Red List Free |
| Indoor Air Quality | Green Label Plus Certified #8216 |
| NSF 140 | Gold |
| Carbon | Net Positive Carbon (Neutral +5%) |

SERVICE

| | |
|------------|---|
| Warranties | Lifetime Limited Wear Warranty, Lifetime Limited Duracolor® Stain Warranty, Lifetime Static |
|------------|---|



Elemental Edges
Wall Base

Elemental Edges is a portfolio of architectural and cove wall base for your finishing needs. Featuring a range of colors that coordinate with our full product line, Elemental Edges also offers 14 stocked colors in cove wall base.



Specifications

CARPET TILE

Dimensional Fade (GT372)
Whispered Layers (GT373)

DESIGN

| | |
|--------------------|---------------------------------|
| Size | 24" x 24" |
| Surface Appearance | Textured Patterned Loop |
| Fiber Type | Duracolor® Tricor Premium Nylon |
| Dye Method | Solution Dyed |
| Colors Available | 14 |

PERFORMANCE

| | |
|--------------------------|----------------------------------|
| Construction | Tufted |
| Gauge | 1/12" (47.00 rows per 10cm) |
| Tufted Weight | |
| Dimensional Fade | 42 oz/yd² (1,424 g/m²) |
| Whispered Layers | 34 oz/yd² (1,153 g/m²) |
| Stain Release Technology | Permanent, Built into the Fiber |
| Soil Release Technology | EcoSentry Soil Protection |
| Backing Material | EcoFlex™ ONE |
| Flammability | ASTM E 648 - Class 1 (Glue Down) |
| Smoke Density | ASTM E 662 - Less than 450 |
| Static Propensity | AATCC - 134 Under 3.5 KV |

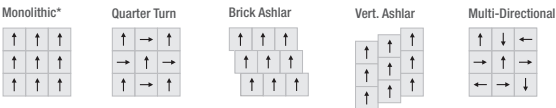
SUSTAINABILITY

| | |
|--------------------|-----------------------------------|
| Certification | Declare Red List Free |
| Indoor Air Quality | Green Label Plus Certified #1171 |
| NSF 140 | Platinum |
| Carbon | Net Positive Carbon (Neutral +5%) |
| Water | Net Positive Water (Neutral +5%) |

SERVICE

| | |
|------------|--|
| Warranties | Lifetime Limited Carpet Tile Warranty, Lifetime Limited Duracolor® Stain Warranty, Lifetime Static |
|------------|--|

Installation Instructions:



*Dimensional Fade only.



RECOVER
RECYCLING PROGRAM

Through Mohawk's ReCover Recycling Program over 160 million pounds of flooring has been diverted from landfills and giving a second life. We accept flooring from any manufacturer and will manage your entire recycling process.



Produced with recycled materials



Mohawk Group

Mohawk Group
160 South Industrial Blvd.
Calhoun, GA 30701
800.554.6637
mohawkgroup.com
MG815 16PG BROCHR LT