



Matuto Plus Stone



Named after the Filipino word for “teacher,” Matuto Plus Stone enhanced resilient tile features eye-catching colors that energize the space and stimulate creativity. Mix and match across the palette of the most popular school colors in the US – from fresh, youthful brights to an array of clean grounded neutrals. The 12” x 24” tiles are designed with a versatile concrete style visual and embossed texture, especially relevant in schools, healthcare settings and retail spaces. Matuto Plus Stone colorways are designed to coordinate across the Mohawk Group suite of products including soft and resilient surfaces, making it easy to create fluid transitions across flooring materials.









927A Sonic Silver Stone

Opposite: 556A Mega Blue Stone, 926A Agreeable Grey Stone, 599A Deep Sea Stone, 123A Barely Beige Stone



Learn & Live

COORDINATING CARPET TILE

Explore Learn & Live, a carpet tile collection inspired by biophilic concepts of complexity and order. Create unique installations where complexity and order ebbs and flows through the use of accent colors. Inspired by nature at a cellular level, Learn & Live Swipe Right carpet tile features organic patterns designed to define areas for study and thought while Side Stripe and Rise Up patterns ignite creativity and stimulation.

FEATURES

- 24" x 24" random and mergeable carpet tiles
- Minimizes purchasing large quantities of attic stock
- Easy and quick selective replacement of tiles
- Tiles are readily available for future renovation or expansion
- Duracolor® Tricor Premium Nylon
- EcoFlex NXT Backing
- Living Product Challenge Petal Certified
- Declared Red List Free



Rise Up 369 Roan



555A Blue Night Stone, 752A Nutshell Stone, 123A Barely Beige Stone

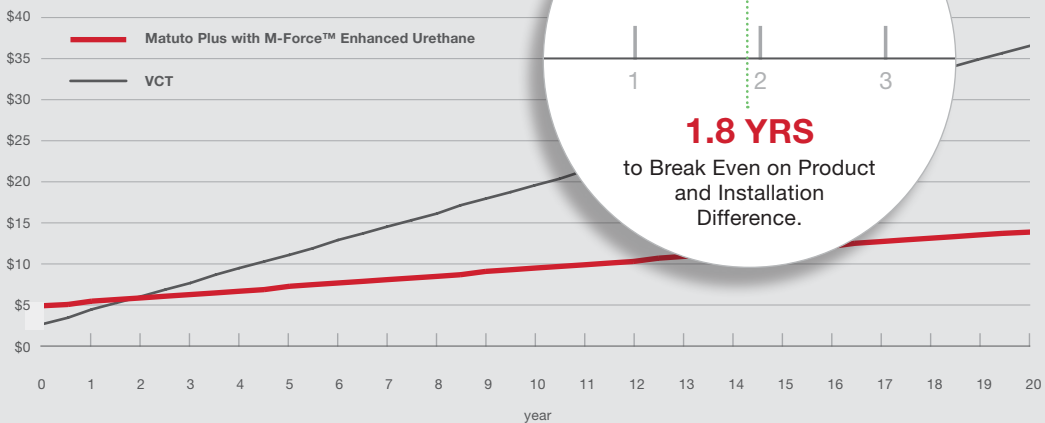
Matuto Plus Stone

FEATURES

- Full range of neutrals and brights that reflect the most popular school spirit colors in the US
- Versatile 12" x 24" tile size allows wide variety of installation patterns
- Concrete style visual with embossed texture
- Designed alongside our carpet collections creating fluid transitions and easy coordination across flooring materials
- 2.5mm overall thickness and 20 mil commercial wear layer for superior durability
- M-Force™ Ultra Enhanced Urethane finish for stain and wear resistance
- Polish-optional surface provides easy maintenance and lower life cycle cost than VCT
- FloorScore® certified

Life Cycle Cost Analysis

Cumulative Cost per Square Foot by Year
Matuto Plus vs. VCT



Matuto Plus enhanced resilient tile with M-Force™ Ultra Enhanced Urethane finish does not require polishing or waxing, which equates to significant cost savings over VCT. The payback occurs in as little as 2 years and compounds exponentially over the life of the installation.

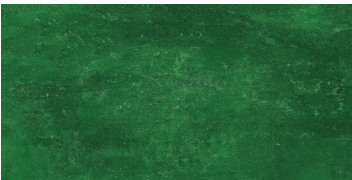
* Tiles may be polished if preferred by the end user.



Matuto Plus Stone Colorways



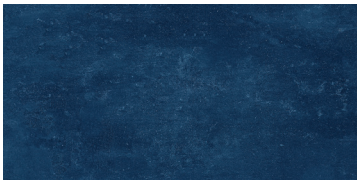
646A Green Grass Stone



656A Botany Stone



556A Mega Blue Stone



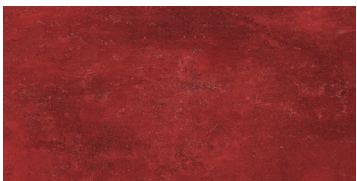
555A Blue Night Stone



599A Deep Sea Stone



454A Wizard Stone



353A Red Hot Stone



252A Outrageous Orange Stone



131A Lemon Twist Stone



123A Barely Beige Stone



752A Nutshell Stone



858A Bronze Blast Stone



959A Grey Granite Stone



927A Sonic Silver Stone



926A Agreeable Grey Stone



915A Frostbite Stone

Specifications

Matuto Plus Stone C0135

DESIGN

Overall Thickness	2.5mm (.1")
Wear Layer	20 mil (0.5mm)
Finish	M-Force™ Ultra Enhanced Urethane
Colors Available	16 Colors
Size	12" W x 24" L
Packaging	36 sf/ctn (3.34m²/ctn); 18 pcs/ctn; 34 lbs/ctn (15.42 kg/ctn)

*For detailed warranty, adhesive and installation information visit mohawkgroup.com

PERFORMANCE

Construction	Commercial Grade Dry Back Enhanced Resilient Tile
Classification	ASTM F1700 - Class III, Type A - Smooth, Type B - Embossed
Squareness	ASTM F2421 - Passes - $\pm 0.10"$ max
Size and Tolerance	ASTM F2421 - Passes - $\pm 0.016"/$ linear foot
Thickness	ASTM F386 - Passes - as specified $\pm 0.005"$
Flexibility	ASTM F137 - Passes - 1" mandrel
Dimensional Stability	ASTM F2199 - Passes - $0.020"/$ linear foot max
Static Load Limit	ASTM F970 - Passes - modified at 1500 psi
Residual Indentation	ASTM F1914 - Passes - Average less than 8%, maximum single reading 10%
Resistance to Chemicals	ASTM F925 - Passes - No more than a slight change
Resistance to Light	ASTM F1515 - Passes - $\Delta E < 8$
Resistance to Heat	ASTM F1514 - Passes - $\Delta E < 8$
Critical Radiant Flux	ASTM E648 - Class 1 (>0.45 W/cm²)
Smoke Density	ASTM E662 Part A - Less than 450

SUSTAINABILITY

Certification	FloorScore® Certified
Recycled Content	100% Virgin Vinyl



Mohawk Group

Mohawk Group
160 South Industrial Blvd.
Calhoun, GA. 30701
800.554.6637
mohawkgroup.com

CO135 12PG BROCHR LT