



GeoCode

Digital Grain Structural Shift



GeoCode

GeoCode - an LVT collection - explores the intersection of craft and technology, offering a grounding sense of place through layered expressions of process and material. Rooted in the idea that knowledge lives equally in systems and skilled hands—the collection reflects a collaboration between code, machine, and material. Patterns blend analog and digital thinking, translating familiar natural references into contemporary surfaces that balance computation, craft, and human intuition.

The collection includes two styles in 18" x 36" with a 2.5 mm thickness that interpret this dialogue in different ways. Structural Shift features an abstract geometric pattern inspired by early forms of human mark-making—from cave paintings and Sanskrit to petroglyphs—evoking an ancient visual code shaped by stone and natural formations. Digital Grain interprets woven textiles through a digital lens, with a crosshatch, linen-like weave influenced by natural materials used in making mats and baskets. Both styles offer familiar patterns that support calm, comfort, and a strong human connection to material.



Learn more at mohawkgroup.com

Cover: Digital Grain, 949 Crypto Clay
Structural Shift, 819 Compass Clay







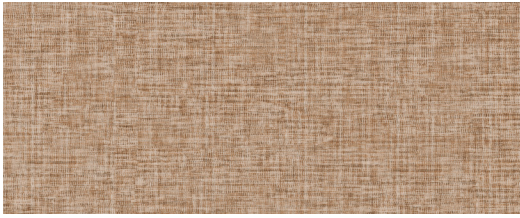
Digital Grain, 949 Crypto Clay, 248 Copper Signal



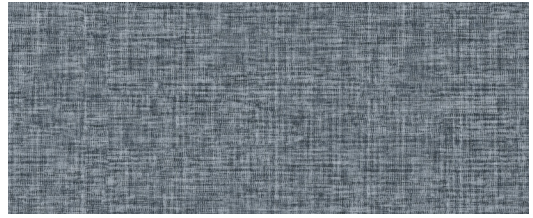
Structural Shift, 947 Granite Grid
Contour Drift, 958 Stone Ply



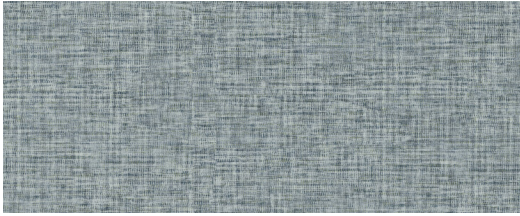
Digital Grain COLORWAYS



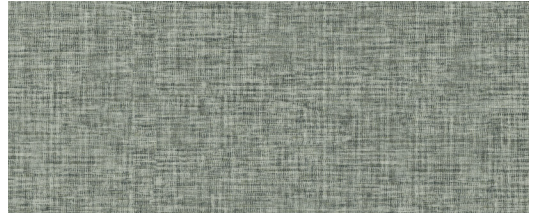
248 Copper Signal



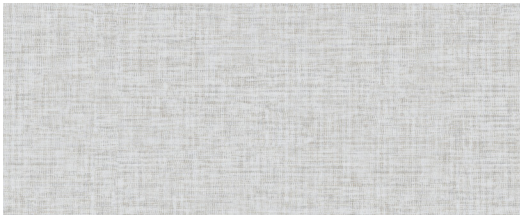
575 Quantum Lake



635 Tidal Teal



646 Matrix Moss



719 Graphite Mist



818 Silicon Sand



829 Fusion Fawn



937 Circuit Ash



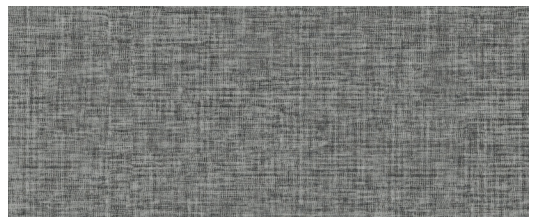
879 Data Drift



848 Coded Umber



949 Crypto Clay



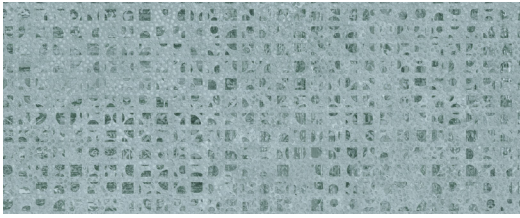
989 Carbon Code





Structural Shift, 729 Terrain Fog

Structural Shift COLORWAYS



625 Tidal Vector



729 Terrain Fog



819 Compass Clay

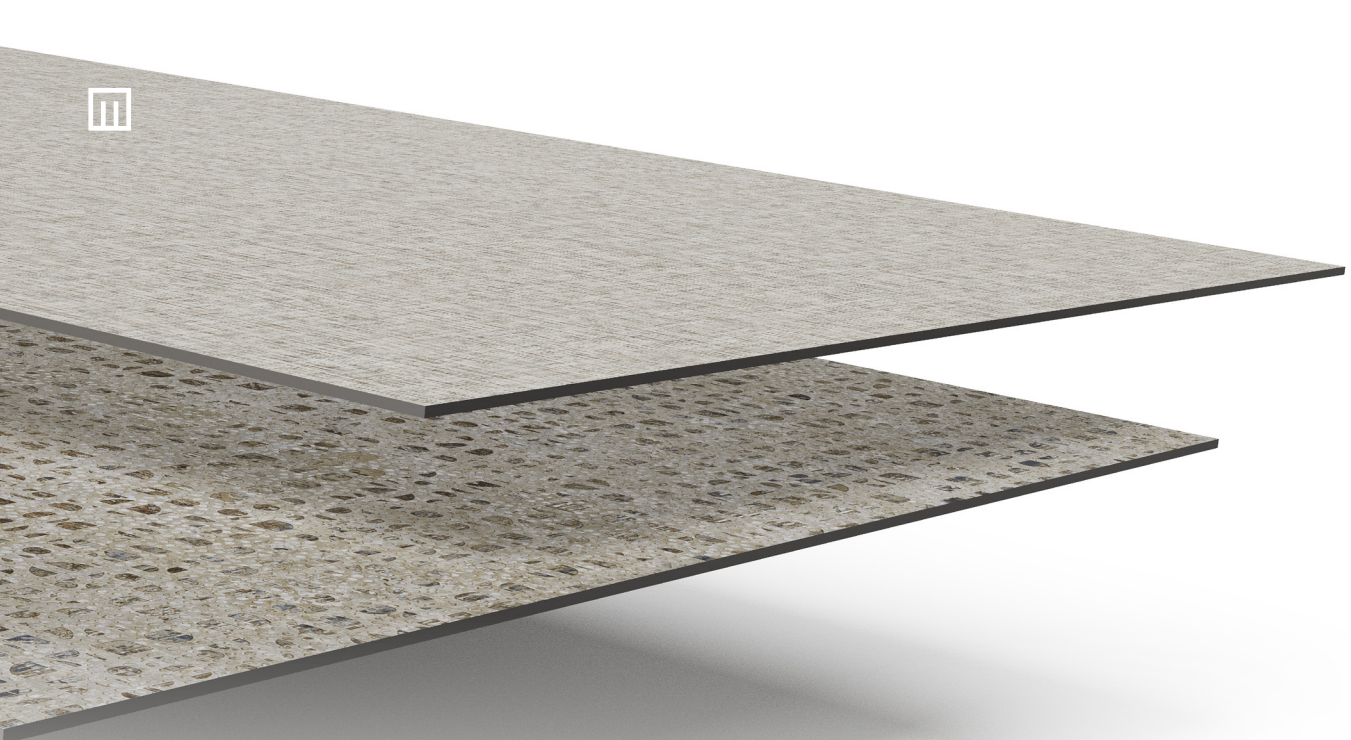


947 Granite Grid

Running Line Rug Program

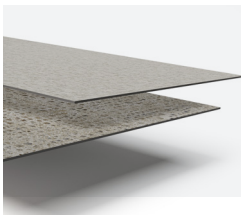
Unlock your creative freedom with our innovative Running Line Rug Program. Dive in and explore our carefully curated styles, mix and match colors, sizes, and edge treatments to create the perfect rug for your space.





Ultra Performance and Worry Free Solutions for Any Project

GeoCode offers a seamless transition to a variety of soft surfaces and helping you meet the needs of different projects. Designed with a 20 mil heavy commercial wear layer and our premium M-Force® Ultra technology, which delivers a complete performance system for LVT.



2.5MM FLEX

Reducing installation time and costs, no transition strips are needed between the 2.5mm platform and EcoFlex® Matrix backed carpet tile.

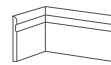
- May contribute toward LEED/WELL
- UL certified EPD
- No ortho-phthalates
- FloorScore® certified for low VOCs

M-Force® Ultra

Our M-Force® Ultra technology provides exceptional resistance, to scratches, stains and dents and easy maintenance for lasting beauty.



All our flooring products go Beyond Carbon Neutral. They are 100% carbon neutral plus an additional 5% carbon offset for a Net-Positive impact.



Elemental Edges Wall Base



A portfolio of architectural and wall base featuring a range of colors that coordinate with our full product line. Elemental Edges also offers 14 Quickship colors in cove wall base.

Specifications

Digital Grain 2.5mm (C3622)
Structural Shift 2.5mm (C3623)

DESIGN

Product Type	Luxury Vinyl Tile - Flexible
Overall Thickness	2.5mm
Wear Layer	20 mil (0.5mm)
Finish	M-Force® Ultra
Colors	
Digital Grain	12
Structural Shift	4
Size	
Actual	18" x 36"
Nominal	18" x 36"
Emboss	Overall
Edge Profile	Squared Edge
Installation & Adhesive	Glue Down & M95.0, MS160, M700 Plus, FlexPress, or Total Bond Adhesive
Packaging	10 pcs per carton / 45 sq ft per carton / 48 ctns per pallet 22 pallets per container

For detailed adhesive and installation information
visit mohawkgroup.com

PERFORMANCE

Construction	Commercial Flexible Luxury Vinyl Tile
Classification	ASTM F1700 - Class III, Type B - Embossed
Squareness	ASTM F2421 - Passes - $\pm 0.10"$ max
Size and Tolerance	ASTM F2421 - Passes - $\pm 0.016"/$ linear foot
Thickness	ASTM F386 - Passes, as specified $\pm .005"$
Flexibility	ASTM F137 - Passes - 1" mandrel
Dimensional Stability	ASTM F2199 - Passes - 0.020"/linear foot max
Static Load Limit	ASTM F970 - Passes, modified at 1000 psi
Residual Indentation	ASTM F1914 - Passes, Avg less than 8%, Max Single Reading 10%
Resistance to Chemicals	ASTM F925 - Passes - No more than a slight change
Resistance to Light	ASTM F1515 - Passes, $\Delta E \leq 8$
Resistance to Heat	ASTM F1514 - Passes, $\Delta E \leq 8$
Critical Radiant Flux	ASTM E648 - Class 1 (>0.45 W/cm ²)
Smoke Density	ASTM E662 - Meets, 450 or less

SUSTAINABILITY

Certification	FloorScore® Certified
Carbon	Net-Positive Carbon (Neutral +5%)
Recycled Content	Yes

SERVICE

Warranties	Limited 20 Year M-Force® Ultra Commercial
------------	---

For detailed warranty information visit mohawkgroup.com



RECOVER
RECYCLING PROGRAM

Through Mohawk's ReCover Recycling Program over 160 million pounds of flooring has been diverted from landfills and giving a second life. We accept flooring from any manufacturer and will manage your entire recycling process.





INTEGRATIVE
CARE CLINIC

Mohawk Group

Mohawk Group
160 South Industrial Blvd.
Calhoun, GA, 30701
800.554.6637
mohawkgroup.com