



Art Style

Disruptive Path



Art, in any form, has the power to advance human connection in an increasingly fragmented world. As a universal language and change agent, art intervenes to inspire, heal and unite. Mohawk Group celebrates the interconnectivity of artistic form and expression with an imaginative collection of products with universal appeal. Representing a truly global product launch, the patterns, textures and colors originate from unexpected art interventions. Manufactured in our facilities around the world, these products are globally accessible.

Disruptive Path

Art and design can occasionally be an unexpected, yet extraordinary, journey. Art Style's Disruptive Path supports this notion with a neutral solid ground pattern that reveals electrifying bright accents. Mohawk Group believes design can be transformative, and we invite you to create your own art intervention with Art Style.





Disruptive Path 946 Above Par, Color Balance 141 Sunlight
Cover: Disruptive Path 933 Crimson Flash, Shared Path 959 Slate (Herringbone)



Disruptive Path Colorways



Disruptive Path 911 Mellow Yellow



Disruptive Path 913 Orange Crush



Disruptive Path 914 Purple Dawn



Disruptive Path 915 Blue Dusk



Disruptive Path 916 Lime Rush



Disruptive Path 919 Pink Berry



Disruptive Path 931 Neon Citron



Disruptive Path 933 Crimson Flash



Disruptive Path 944 Cotton Candy



Disruptive Path 946 Above Par



Disruptive Path 954 Purple Ash



Disruptive Path 955 Cosmic Sky





Disruptive Path 911 Mellow Yellow, Shared Path 924 Platinum (Half-Lap), Matuto Plus 927 Sonic Silver (Monolithic)

Matuto Plus

ENHANCED RESILIENT TILE

Named after the Filipino word for “teacher,” Matuto Plus enhanced resilient tile features eye-catching colors that energize the space and stimulate creativity.

Matuto Plus Colorways



646 Green Grass



656 Botany



556 Mega Blue



555 Blue Night



599 Deep Sea



454 Wizard



353 Red Hot



252 Outrageous Orange



131 Lemon Twist



123 Barely Beige



752 Nutshell



858 Bronze Blast



959 Grey Granite



927 Sonic Silver



926 Agreeable Grey



915 Frostbite

CONSTRUCTION

The 12"x 24" tiles are designed with a versatile concrete style visual and embossed texture, especially relevant in schools, healthcare settings and retail spaces.

PERFORMANCE

The 20 mil commercial wear layer coated with M-Force™ enhanced urethane finish provides durability and cleanability with a no-polish option that allows for cost-effective maintenance.

COLOR

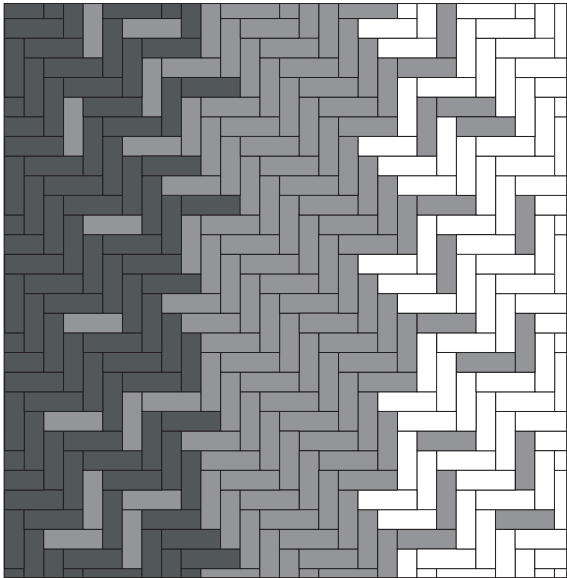
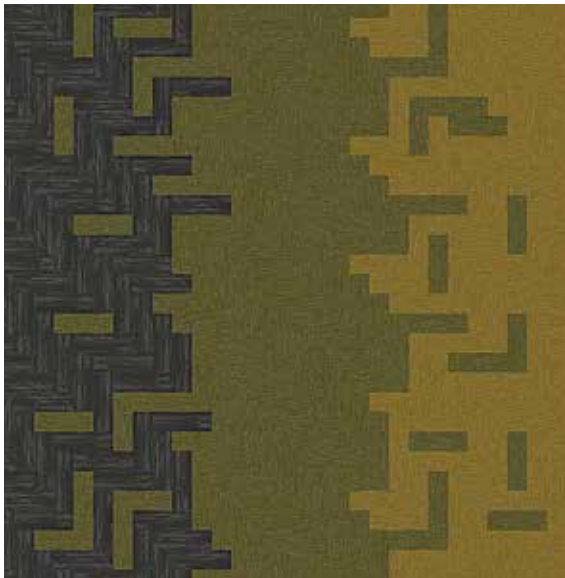
Mix and match across the palette of the most popular school colors in the US – from fresh, youthful brights to an array of clean grounded neutrals.



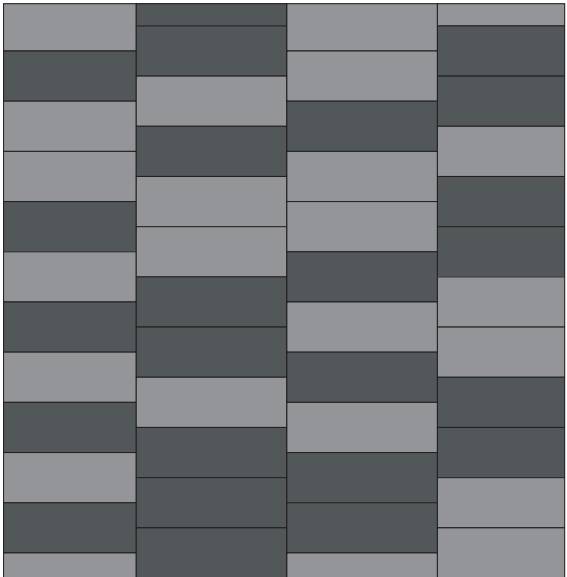


Installation Inspirations

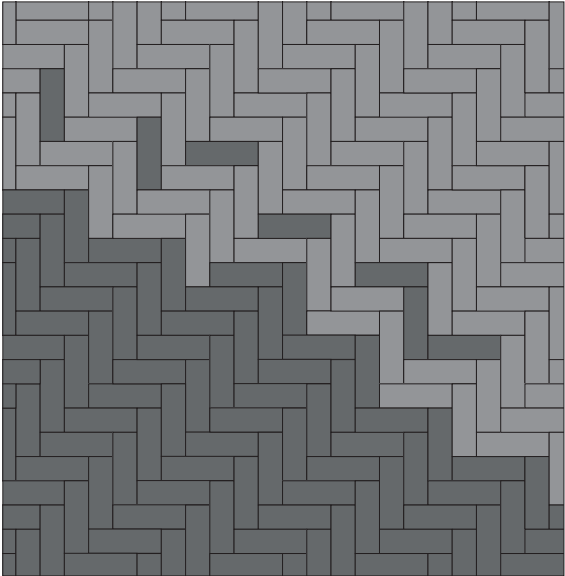
The installation ideas featured here are a small sampling of the infinite possibilities offered in the Art Style Collection.



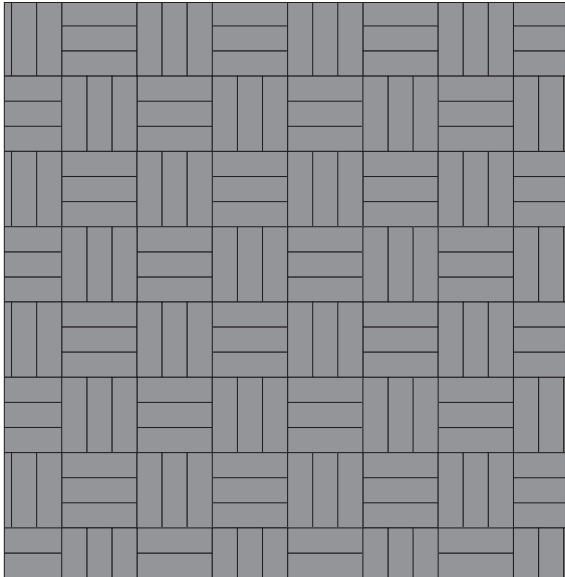
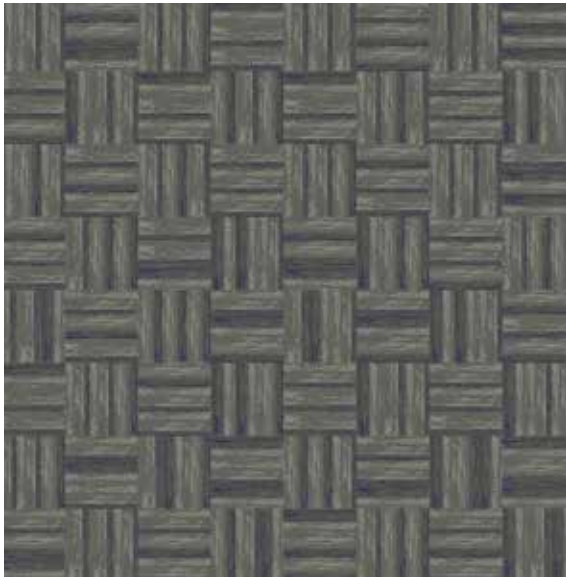
Disruptive Path 946 Above Par, Color Balance 141 Sunlight and Color Balance 641 Punchy (Herringbone)



Disruptive Path 915 Blue Dusk, Shared Path 924 Platinum (Monolithic Stepping)



Disruptive Path 933 Crimson Flash, Shared Path 989 Charcoal (Herringbone)



Disruptive Path 919 Pink Berry (Basket Weave)



Disruptive Path 919 Pink Berry (Basket Weave)

Colorstrand FIBER

For over 15 years, Colorstrand fiber has continually exceeded the demanding expectations of our customers for their projects. With the design flexibility and color intensity of solution dyed fiber, Colorstrand delivers lasting beauty and value. And, Colorstrand has the added benefit of third party SCS Global Services certified 30% recycled content.

PERFORMANCE

- Unsurpassed colorfastness to light, atmospheric contaminants, and harsh cleaning agents in Colorstrand SD
- EcoSentry Plus Soil® and Stain Protector keeps your investment looking newer longer
- Can be engineered to achieve the most severe TARR ratings

BUDGET

- Internally extruded fiber allows cost control of products
- Numerous broadloom and modular products available at value engineered budgets

SUSTAINABILITY

- Colorstrand contains a minimum of 30% pre-consumer recycled content by total weight*
- Mohawk products tufted with Colorstrand are CRI Green Label Plus® certified for VOC emissions
- Recyclable through Mohawk's ReCover Program

DESIGN

- A wide variety of colors for excellent design flexibility

SERVICE

- Quickship Styles available within 10 days providing what you need when you need it
- 100% vertically integrated providing unsurpassed lead times and service reliability

*Recycled content claim third party verified by SCS Global Services



EcoFlex[™] NXT

CARPET TILE BACKING

EcoFlex NXT is a polyolefin carpet tile backing that is up to 40% lighter than similar competitive products, making it easier to install and less expensive to ship. It also incorporates a minimum of 35% pre-consumer recycled content.

PERFORMANCE

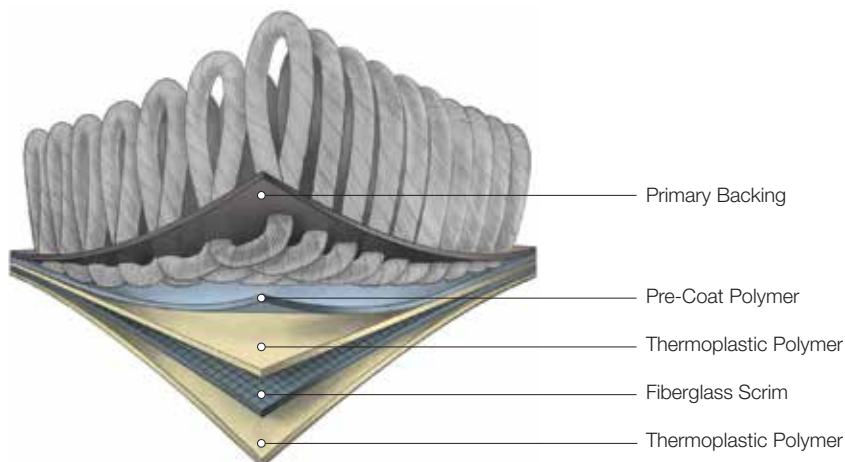
- Provides permanent tile dimensional stability
- Tiles are impervious to moisture damage from spills and water extraction cleaning
- Main body of tile provides an effective moisture barrier (not applicable at the seams)
- Available on select running line products and on special order basis with low minimums on all Mohawk carpet tile product
- Construction features superior tuft bind that is highly resistant to edge ravel

SUSTAINABILITY

- Contains no plasticizers
- Contains a minimum of 35% pre-consumer recycled content based on total product weight**
- Certified at the Gold Level in accordance with NSF/ANSI 140
- EcoFlex NXT may contribute to or comply with LEED®, WELL and Living building Challenge
- CRI Green Label Plus certified
- Declare Red List Free
- Recyclable through Mohawk's ReCover program

INSTALLATION

- Simplifies complex floor preparation with no need to encapsulate old adhesives*
- Greatly reduces sub-floor moisture concerns and saves money on mitigation
- Worry free installation with no visible moisture present using our Flexlok Tab System
- Superior construction offers reliability for the life of your installation



*Consult Mohawk Group Installation Instructions for any applicable restrictions

**Recycled content claim third party verified by UL (Underwriters Laboratory)

Transparency

SUSTAINABLE LEADERSHIP

Mohawk Group leads the building products industry in transparency with the largest selection of products with Declare Labels, Health Product Declarations (HPDs), and Environmental Product Declarations (EPDs). What’s more, we offer over 500 Red List Free Declared products.



OUR COMMITMENT

As a Gaia sponsor of the International Living Future Institute (ILFI), we are committed to revolutionary programs that are redefining the green building movement. These include the ILFI’s Living Building Challenge and Declare programs.

Declare Labels are a ‘nutrition label’ for the building industry, providing ingredients, source and manufacturing locations. We offer you:

- The most products with Declare Labels
- The most Red List Free products

We have eliminated the mystery of product ingredients so you get total product transparency.*

Commercial Nylon Modular Tile on EcoFlex NXT
Mohawk Group

Final Assembly: Glasgow, VA, USA
Life Expectancy: 15 Years
End of Life Options: Take Back Program (Various Locations)

Ingredients:

Coating: Limestone, Ethylene-Propylene Copolymer, Butadiene Acrylate, Tackifier, Propylene Homopolymer, Polyethylene, Ammonium Lauryl Sulfate, Carbon Black Amorphous, Sodium Polyacrylate Thickener, Calcium Carbonate, Ethylene Maleic Anhydride Copolymer; **Primary:** Polyethylene Terephthalate, Propylene Homopolymer; **Scrim:** Filament Glass Fibers, Modified Acrylic Copolymer; **Yarn:** Nylon 6, Nylon 6,6, Titanium Dioxide; **Topical:** 2-Propenoic Acid, 2-Methyl-, Butyl Ester, Polymer with Butyl 2-Propenoate and Methyl 2-Methyl-2-Propenoate, Potassium Lauryl Phosphate, 4,4-Dihydroxydiphenylsulfone-Formaldehyde-p-Phenolsulfonic Acid Copolymer; **Dyes:** Red Colorant, Yellow Colorant, Black Colorant, Blue Colorant, Orange Colorant, Red Colorant, Yellow Pigment

Living Building Challenge Criteria:

MHK-3009
VOC Content: N/A

Declaration Status

VOC Emissions: CDPH Compliant
☒ LBC Red List Free
☐ LBC Compliant
☐ Declared

MANUFACTURER RESPONSIBLE FOR LABEL ACCURACY
INTERNATIONAL LIVING FUTURE INSTITUTE™ declareproducts.com

Mohawk Group utilizes multiple platforms for disclosing our transparency information, including: Mindful Materials and the Declare Database.”



*Transparency documentation can be found at mohawkgroup.com



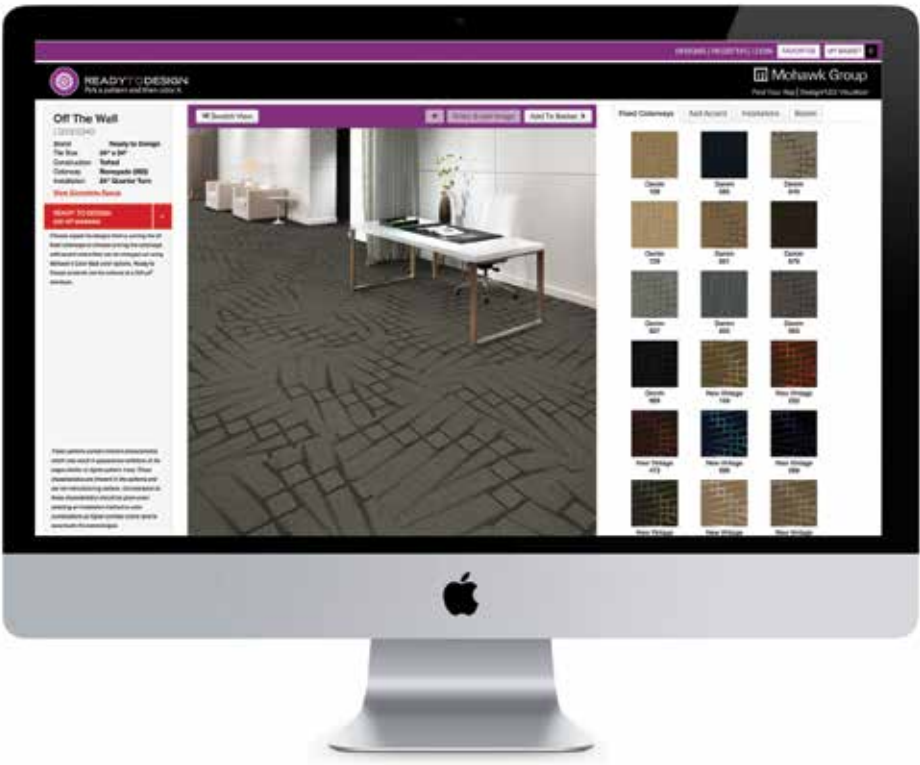
Visual Interactive Studio

Mohawk Group's VISUAL INTERACTIVE STUDIO (VIS) offers a suite of design services to help you craft and perfect every aspect of your flooring selection.

Visit our website to customize the colors of a range of carpet patterns with our Ready to Design tool, or create striking layouts in carpet tile with the DesignFlex Visualizer. The VIS can provide hi-res renderings of 2D floor perspectives and 3D room scenes for all your design needs.

The Ready to Design color customization tool provides you with the creative flexibility you want, the ability to order the quantity you need—without excessive minimum purchase requirements—and speedy delivery options!

At our showrooms, you can explore your flooring options in photorealistic environments with our state-of-the-art, fully immersive virtual reality system. Contact your local Mohawk Group sales representative to experience this amazing VR tool for yourself.



To learn more or to get started on your next project, visit us at mohawkgroup.com

Specifications

Art Style Collection Disruptive Path / BT430 / QB430

DESIGN

Size	12" x 36" (.3048 m x .9144 m)
Surface Appearance	Textured Patterned Multi-Colored Loop
Fiber Type	Colorstrand® SD Nylon
Dye Method	Solution Dyed
Installation Methods	Monolithic, Monolithic Stepping, Half-Lap, Brick Ashlar, Basket Weave, Random, Herringbone, Plank Half-Lap
Colors Available	12

PERFORMANCE

Construction	Tufted
Gauge	1/12" (47.00 rows per 10cm)
Stain Release Technology	EcoSentry Plus Stain Protection
GSA Stain Release Technology	Passes
Soil Release Technology	EcoSentry Soil Protection
Backing Material	EcoFlex NXT
Flammability	ASTM E 648 - Class 1 (Glue Down)
Smoke Density	ASTM E 662 - Less than 450
Static Propensity	AATCC - 134 Under 3.5 KV

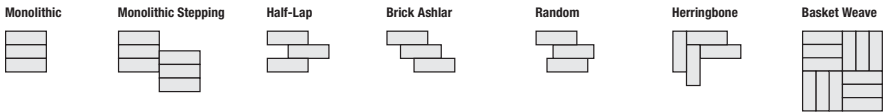
SUSTAINABILITY

Certification	Declare Red List Free
Indoor Air Quality	Green Label Plus #1171
NSF 140	Gold

SERVICE

Warranties	Lifetime Limited Carpet Tile Warranty, Lifetime Limited Colorfastness to Light, 10 Year Limited Colorfastness to Atmospheric Contaminants, 10 Year Stain Warranty, Lifetime Static
------------	------------------------------------------------------------------------------------------------------------------------------------------------------------------------------------

Installation Instructions:



Mohawk Group warrants its adhesives for the life of the original installation only when a Mohawk Group style (product) is installed. Mohawk's floor preparation procedures must be followed to ensure that the substrate has been prepared properly. Failure to use Mohawk Group adhesives or to follow Mohawk's floor preparation procedures will void all lifetime adhesive warranties. Please contact your local Sales Representative for installation guidelines.

These patterns contain inherent characteristics which may result in pattern run off and/or pattern appearance variations at the seams or tile edges (darker or lighter pattern lines). These characteristics are inherent in the patterns and are not manufacturing defects. Consideration to these characteristics should be given when selecting an installation method.

Chair pads are recommended under office chairs with roller casters to preserve appearance retention, act as a deterrent toward delamination and to prevent premature or accelerated wear. Walk-off tiles from the Tuff Stuff II Collection are recommended at entryways to reduce soiling.

Mohawk Group is providing this architect folder for the purpose of promoting our commercial business. This folder and its samples shall remain the property of Mohawk Group. Color may vary from dye lot to dye lot. Substitution of material may be made due to improved technology, supply limitations or other factors. The performance of this product is not affected by such variations.

For current and complete specifications please visit www.mohawkgroup.com



Produced with recycled materials

