



Data Tide

Aqua Rhythm River Code Biome



Data Tide

The convergence of freshwater and saltwater creates a unique ecosystem where salt marshes, mangroves, and sea grasses sequester Blue Carbon, support biodiversity, and protect coastal areas from erosion.

Data Tide's patterning is the graphic interpretation of the positive ecological influence of this Blue Carbon capture, translated visually through data sets.

A selection of 8 colorways reference the confluence of estuaries, with gradations of colorways from light to dark that mimic transitioning waters. Three styles feature a combination of solid, heathered and twisted yarns for dimensional textures that celebrate the movement of water.







Data Tide is an innovative collection of 12"x36" modular carpet planks by Mohawk Group that seeks to explore the symbiotic relationship between nature and data through graphic landscapes. With a focus on the need for biodiversity and water's essential role for survival in the natural world, our design team used data sets from environmental studies of water to derive biophilic patterns using data visualization.



LIVING PRODUCT CERTIFICATION

Produced at our Living Site, Data Tide is Net Positive for both carbon and water and achieves Petal Certification from the International Living Future Institute by complying with multiple imperatives of all seven petals.



NEXT GENERATION CARPET FIBER

Duracolor Tricolor's new innovative modified-delta shape and optical core optimize color clarity, strength, stain resistance, and soil hiding and removal. As a result, Duracolor Tricolor delivers the ultimate synthesis of brilliant color and unsurpassed performance.

FLEXLOK

EASY INSTALLATION

Our Red List Free EcoFlex™ NXT backing provides a worry-free installation when installed with FlexLok tabs, that can be installed with no moisture testing, provided no signs of visible moisture are present.



MERGEABILITY

Data Tide is designed to allow the mergeability of various dye lots, so ongoing maintenance and selective tile replacement will keep your flooring installation looking great for years to come.



SEAMLESS TRANSITIONS

Data Tide does not require transition strips when used with any of our 4.5/5mm LVT products, reducing installation time and costs.

ADDITIONAL FEATURES

- Lifetime Duracolor Stain Warranty
- LEED, WELL & LBC Eligible
- Declare Red List Free
- CRI Green Label Plus
- NSF 140 Gold



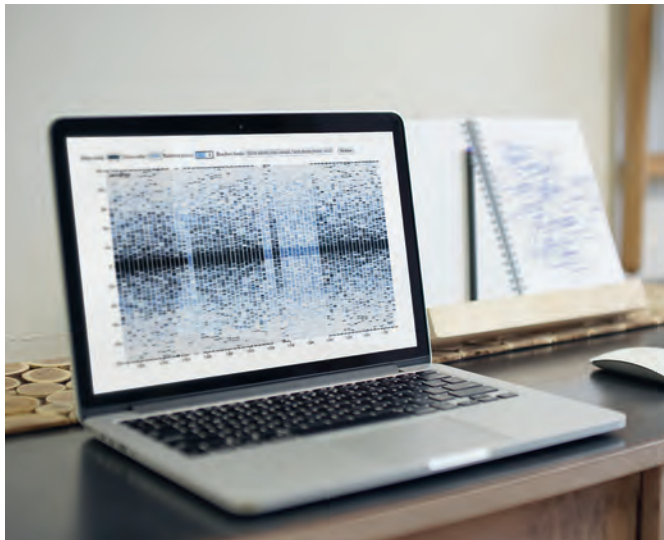




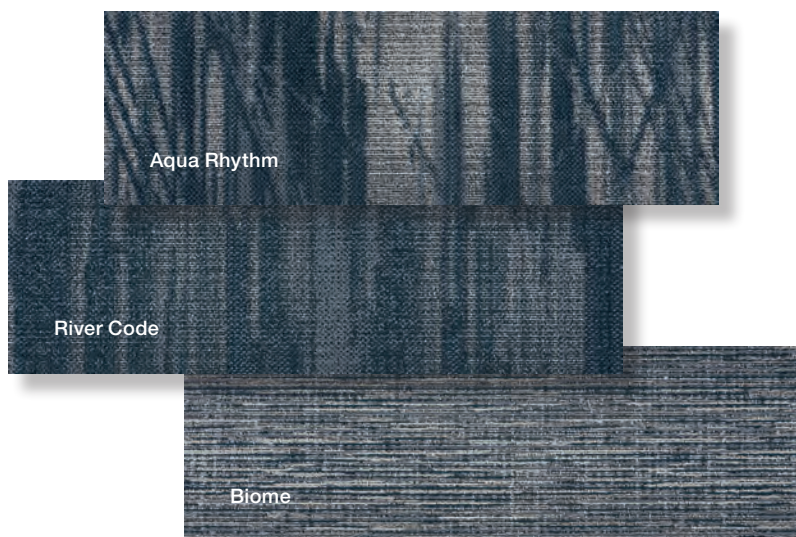
Designed with Data

The inspiration for the modular carpet collection began with data. Mohawk Group designer Stacey Gerbman and A&D design director Royce Epstein gathered data sets* on the amount of Blue Carbon sequestered in ecosystems around the globe and then transformed the information into patterns using a custom-built data visualization tool.

The patterns were integrated with visual elements of water ecosystems and evolved into three coordinating styles of modular carpet planks, each one a union of ecological data and biophilic design. The color palette also draws on tones from estuaries, helping to instill a relationship to nature in interior spaces.



*Data sets from independent studies by *Duke University* and the *UN Panel on Climate Change* were input into our data visualization software and used to create product patterning.



Designed to Work Together

Data Tide's three coordinating patterns are designed to work together and independently in a product suite that maximizes your creative vision. Create defined areas within a large space quickly and seamlessly, in eight colorways that are shared across all styles.



Aqua Rhythm
575 Blue Carbon
Herringbone Installation

Biome
549 Wetland
Ashlar Installation



Aqua Rhythm, 558 Freshwater
Vertical Ashlar Installation



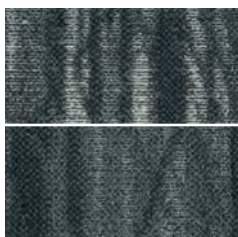
Aqua Rhythm and River Code, 575 Blue Carbon
Horizontal Ashlar Installation



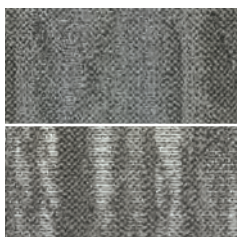


Aqua Rhythm COLORWAYS

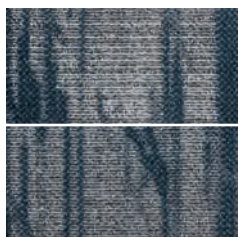
Aqua Rhythm is an active pattern with tip shear construction that simulates the rippled convergence of fresh and salt waters at the mouths of estuaries.



549 Wetland



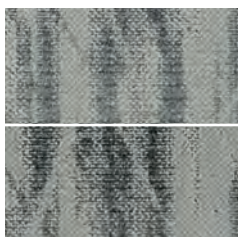
558 Freshwater



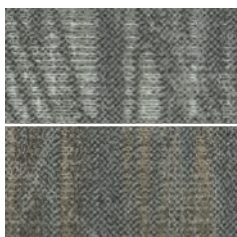
575 Blue Carbon



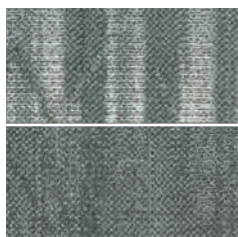
748 Saltmarsh



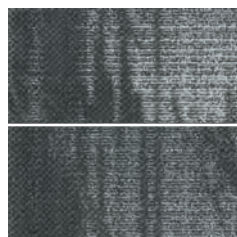
759 Brackish



859 Delta



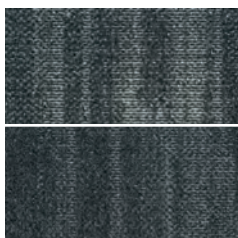
947 Coastline



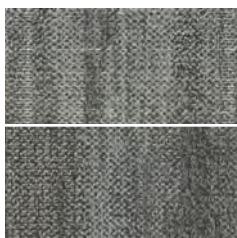
979 Sediment

River Code COLORWAYS

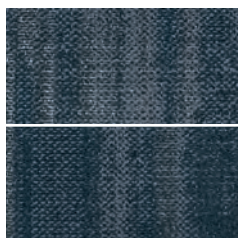
River code is a textural pattern in an all loop construction with a subtle motion that hearkens to calm waters found in marshes and wetlands.



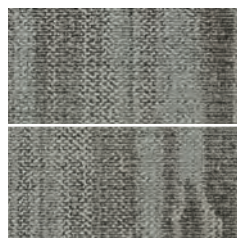
549 Wetland



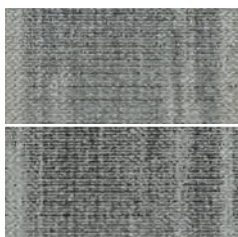
558 Freshwater



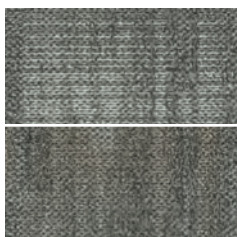
575 Blue Carbon



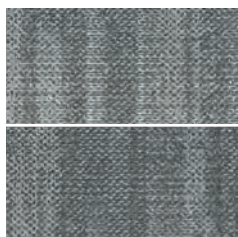
748 Saltmarsh



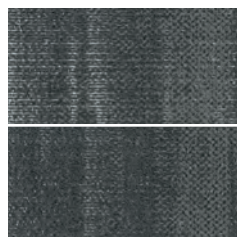
759 Brackish



859 Delta



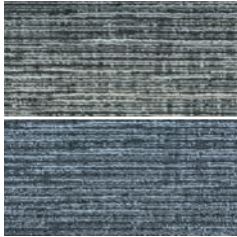
947 Coastline



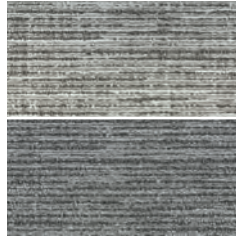
979 Sediment

Biome COLORWAYS

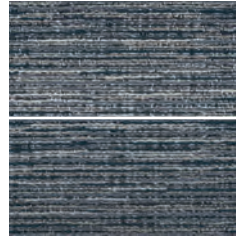
Biome is a rich and tonal coordinating loop texture, referencing different bio-diverse ecosystems that are dependent on waterways.



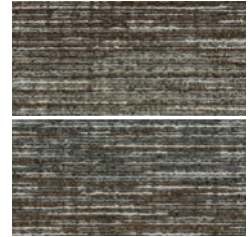
549 Wetland



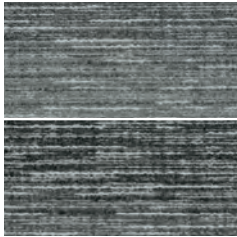
558 Freshwater



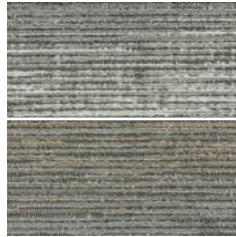
575 Blue Carbon



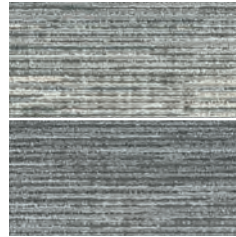
748 Saltmarsh



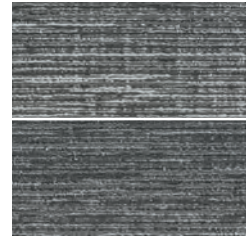
759 Brackish



859 Delta



947 Coastline



979 Sediment



The colorways in Data Tide are a biomimetic response to the reflection of dispersed light in the flow of water, so no two tiles will be exactly alike.



River Code, 558 Freshwater
Vertical Ashlar Installation



Biome, 549 Wetland
Basketweave Installation



River health is human health. That's why we're launching The Waterways Project – a journey through new products, technologies and initiatives to help us better understand and give back to the living rivers that sustain us all.

Restoring River Ecosystems

At Mohawk Group, we have a longstanding commitment to reduce water usage and conserve water ecosystems. It's a big part of how we help you create spaces that are environmentally responsible and mindful of people's health and wellbeing. This year, we're expanding our efforts by working to make a greater positive impact on rivers and the life they make possible.

With The Waterways Project, we're bringing you on a journey to experience and help restore river ecosystems. You'll discover a series of collections designed to help you foster a symbiotic relationship with rivers in your work, with products made with new technologies that enable you to protect water ecosystems. And your specification will support river restoration projects, thanks to our partnerships with Change the Course and Waterkeeper Alliance. These nonprofits are helping communities like yours restore and protect rivers across North America and the world.



As the largest and fastest-growing non-profit solely focused on clean water, Waterkeeper Alliance connects more than 350 grassroots Waterkeeper groups around the world, protecting 2.8 million square miles of waterways in 46 countries. We're proud to support the global work of the Alliance, donating funds and committing hundreds of hours of volunteer time to river cleanups around the US.



Funding a range of water stewardship projects, Change the Course is building a self-sustaining cycle of community education, ecosystem restoration and ongoing conservation of river systems across North America. For every square yard of product purchased from The Waterways Project collections, we will restore 350 gallons of water* – helping you make a lasting contribution to the health of American rivers and communities.

*Based on 2021 estimations, totaling 8 million gallons of water restored.



Living Product Challenge

Mohawk Group is proud to do our part to conserve resources and preserve the environment. Our designers and engineers seek to develop products that are healthy and free of toxins, socially responsible and respectful of worker's rights, and positively impact the environment.

Produced at our Living Site, Data Tide is Net Positive for both carbon and water, and achieves Living Petal Certification from the International Living Future Institute by complying with multiple imperatives of all seven petals, listed below.

Living Product Challenge 2.0

Mohawk Group
Nylon Modular Carpet on EcoFlex NXT Backing

Manufacturing Location:
Glasgow, VA, USA

Petal Certified
17/20
Imperatives Achieved

Petals Met: Place, Water, Health & Happiness, Beauty

3/3	Place
2/2	Water
1/2	Energy
3/3	Health
3/4	Materials
3/4	Equity
2/2	Beauty

Carbon Impact

- Yarn
- Polypropylene
- Manufacturing Electricity
- Stabilizer Serum
- ABS Backing
- Other
- Handprint

11.18 kg CO₂ eq

CO₂

Net Positive

Water Impact

- Yarn
- Water Used During Manufacturing
- Stabilizer Serum
- ABS Backing
- Polypropylene
- Other
- Handprint

0.0287 m³ H₂O

H₂O

Net Positive

Energy Impact

- Yarn
- Polypropylene
- ABS Backing
- Primary
- Manufacturing Electricity
- Other

4.43 kg oil eq

kg oil

Waste Impact

- Diverted
- Landfill

WASTE

WASTE

Declare.

Red List Free
 IBC Compliant
 Diverted

Material Health
95% Assessed

Coating: Recycled Calcium Carbonate, Polypropylene Copolymer, Recycled Calcium Carbonate, Butadiene Acrylate, 2, 5-Furandione, Polymer with Ethene and 1-Propane, Magnesium Carbonate, Polypropylene, Silica, N,N-Bis(2-Hydroxyethyl)alkyl (C12-C13) Amine, Sodium Dodecyl Diphenyl Ester Sulfonate, Black Pigment, Tris(2,4-dibutylphenyl) Phosphate, Polyolefin, Sodium Sulfate, Azobiscyclohexyl Sulfate, Faced Fiber Nylon 6, Nylon 6,6 Backing: Polyester, Recycled Glass, Starch, Polymer with 2-Propanoic Acid, Graft, Sodium Salt, Polypropylene, Black Pigment, Topical: 2-Propanoic acid, 2-methyl-, butyl ester, Polymer with butyl 2-propanoate and methyl 2-methyl-2-propanoate, 4-(4-hydroxyphenyl)phenylsulfone-formaldehyde-epichlorohydrin sulfonic acid copolymer, Decyl Glucoside, Decosonic Acid, Phosphoric Acid, Dodecyl Ester, Potassium Salt, Sodium (C14-16) Olefin Sulfonate, Various Colorants and Dyes

Verified By: WAP Sustainability

MHK-LP008
EXP. 06/12/2022

INTERNATIONAL LIVING FUTURE INSTITUTE™ living-future.org/pc



PLACE PETAL
Responsible & Habitat Impact



ENERGY PETAL
Energy Footprint



WATER PETAL
Water Footprint & Net Positive Water



HEALTH & HAPPINESS PETAL
The Red List, Transparent Material Health, Human Thriving



MATERIALS PETAL
Responsible Industry, Net Positive Carbon



EQUITY PETAL
Ethical Supply Chain, Equitable Investment, Social Co-Benefits



BEAUTY PETAL
Beauty + Spirit, Inspiration & Education

Mohawk Group is proud to be the first manufacturer to create a Living Site, a facility dedicated to the future and bettering our planet.

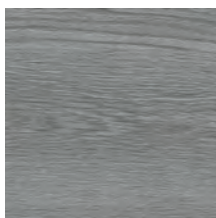


Coordinated Solutions

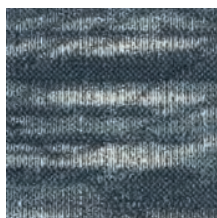
Mohawk Group's innovative flooring solutions offer customers a simple specifying experience with different products working together for one purpose. Complete your project with ease with coordinated products and colors across our full portfolio of soft and resilient flooring, as well as finishing accessories.

LARGE & LOCAL WOOD

Data Tide can be paired seamlessly with our hard surface 4.5mm LVT products like Large & Local Wood. This worry-free solution offers design flexibility and superior performance to create beautiful, productive spaces.

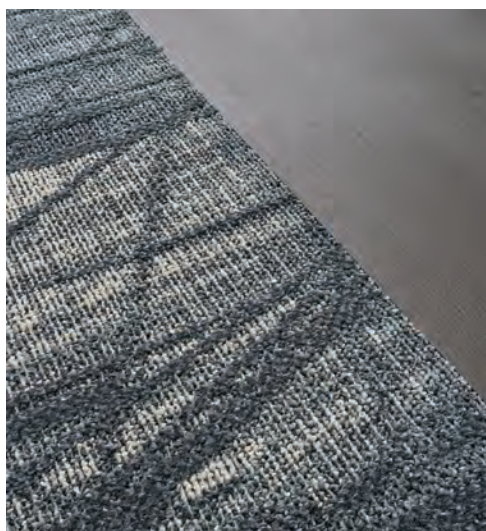


+



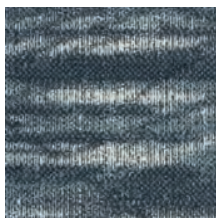
Large & Local Wood
955 Jarrard, 9" x 59"

Aqua Rhythm
549 Wetland, 12" x 36"



ELEMENTAL EDGES

Elemental Edges is a complete portfolio of free-to-ship accessories for all your flooring installation and finishing needs. The program is offered in 14 QuickShip colors that coordinate perfectly with the Data Tide collection, allowing for a full flooring solution that is easy to select and readily available.



+



Aqua Rhythm
549 Wetland, 12" x 36"

Wall Base
073 Aircraft Carrier



Specifications

Aqua Rhythm (GT455)
River Code (GT454)
Biome (GT456)

DESIGN

Size	12" x 36" (.3048 m x .9144 m)
Surface Appearance	Textured Patterned Multi-Colored Loop (River Code / Biome) Textured Patterned Tip Shear (Aqua Rhythm)
Fiber Type	Duracolor® Tricolor Premium Nylon
Dye Method	Solution Dyed
Installation Methods	Herringbone / Basket-Weave / Monolithic Stepping / Half-Lap / Brick Ashlar
Colors Available	
Aqua Rhythm	8
River Code	8
Biome	8

PERFORMANCE

Construction	Tufted
Gauge	1/12" (47.00 rows per 10cm)
Stain Release Technology	Permanent, Built into the Fiber
Soil Release Technology	EcoSentry Soil Protection
Backing Material	EcoFlex™ NXT
Flammability	ASTM E 648 - Class 1 (Glue Down)
Smoke Density	ASTM E 662 - Less than 450
Static Propensity	AATCC - 134 Under 3.5 KV

SUSTAINABILITY

Certification	Living Product Challenge Petal Certified; Declare Red List Free
Indoor Air Quality	Green Label Plus Certified #1171
NSF 140	Gold
Carbon	Net Positive Carbon
Water	Net Positive Water

SERVICE

Warranties	Lifetime Limited Carpet Tile Warranty, Lifetime Limited Duracolor® Stain Warranty, Lifetime Static
------------	---

Mohawk Group warrants its adhesives for the life of the original installation only when a Mohawk Group style (product) is installed. Mohawk's floor preparation procedures must be followed to ensure that the substrate has been prepared properly. Failure to use Mohawk Group adhesives or to follow Mohawk's floor preparation procedures will void all lifetime adhesive warranties. Please contact your local Sales Representative for installation guidelines.

These patterns contain inherent characteristics which may result in pattern run off and/or pattern appearance variations at the seams or tile edges (darker or lighter pattern lines). These characteristics are inherent in the patterns and are not manufacturing defects. Consideration to these characteristics should be given when selecting an installation method.

Chair pads are recommended under office chairs with roller casters to preserve appearance retention, act as a deterrent toward delamination and to prevent premature or accelerated wear. Walk-off tiles from the Tuff Stuff II Collection are recommended at entryways to reduce soiling.

Mohawk Group is providing this architect folder for the purpose of promoting our commercial business. This folder and its samples shall remain the property of Mohawk Group. Color may vary from dye lot to dye lot. Substitution of material may be made due to improved technology, supply limitations or other factors. The performance of this product is not affected by such variations.

For current and complete specifications please visit www.mohawkgroup.com



♻️ Produced with recycled materials



Mohawk Group

Mohawk Group
160 South Industrial Blvd.
Calhoun, GA. 30701
800.554.6637
mohawkgroup.com

GT454 20PG BROCHR LT