



# Adaptive Alliance

Geo Path Rhythmic Drift Mapped Tonal Fields



# Adaptive Alliance

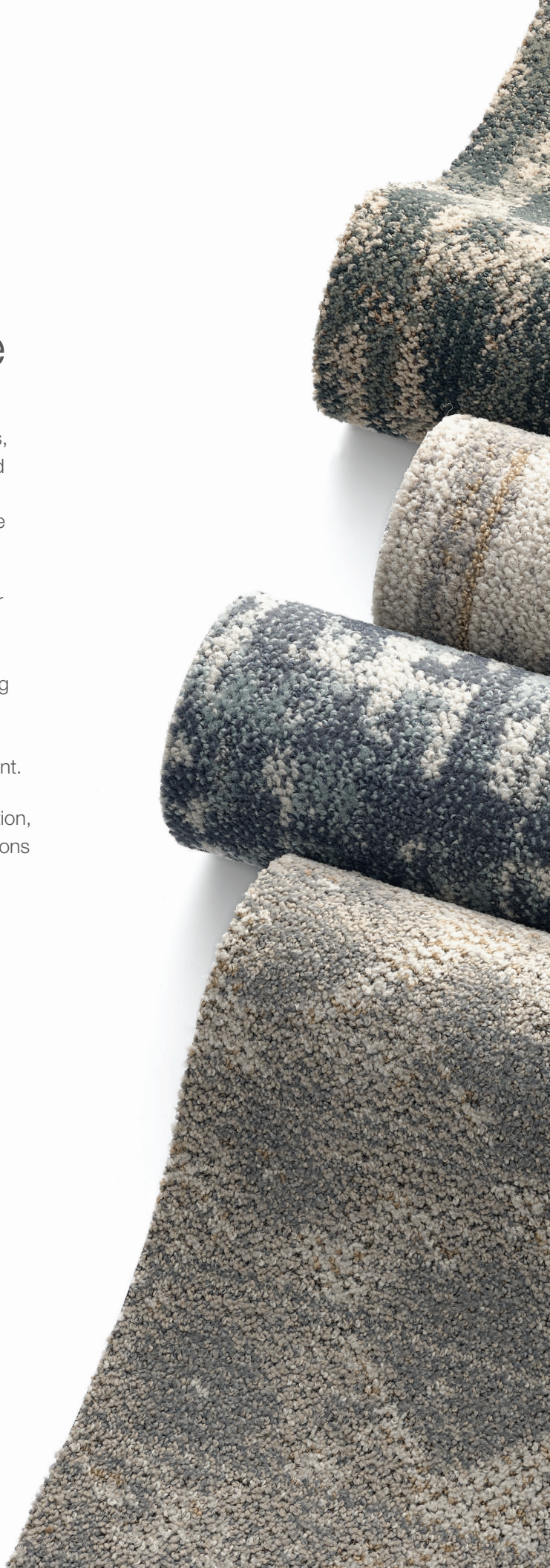
Drawing on architectural grids, raw materials, and the movement of people through shared spaces, Adaptive Alliance expresses the energy of the built environment as a dialogue between structure and the human touch.

The collection offers broadloom and modular carpet styles that are rooted in the spirit of *Techne*—the union of craft, practical knowledge, and thoughtful making. Featuring a hint of metallic yarn in the colorways, each pattern creates a subtle sense of structure enlivened by spontaneous, organic movement.

As Book Two of the Adaptive Alliance collection, these styles are the subtly textured companions to the patterns in Book One.



Learn more at [mohawkgroup.com](https://mohawkgroup.com)







Adaptive Alliance features two styles of modular carpet in your choice of platform: Duracolor® Tricolor fiber with EcoFlex® ONE carpet tile backing, or ColorStrand® fiber with EcoFlex® AIR carpet tile backing. The two broadloom styles are available in ColorStrand® fiber with our Weldlok® broadloom backing. No matter which product you choose, this collection is Beyond Carbon Neutral for a net-positive impact in carbon. Adaptive Alliance supports Mohawk's sustainability efforts and commitment to Net Zero carbon emissions by 2040, sustaining a better ecological community.



Duracolor Tricolor's new innovative modified-delta shape and optical core optimize color clarity, strength, stain resistance, and soil hiding and removal. As a result, Duracolor Tricolor delivers the ultimate synthesis of brilliant color and unsurpassed performance.

## EcoFlex® ONE

Harnessing proven technology and advanced materials, EcoFlex® ONE delivers an all-in-one solution for optimal flooring performance and reduced costs, while supporting greater wellness for people and planet.



Since 2022, all Mohawk Group commercial products are beyond carbon neutral plus an additional 5% handprint, for a net-positive impact on the environment.



For over 15 years ColorStrand fiber has continually exceeded expectations. With unsurpassed colorfastness and EcoSentry Plus Soil® and Stain Protector, it delivers both lasting beauty and value.

## Weldlok®

Weldlok is Mohawk Group's standard broadloom backing system. It can be enhanced with OnGuard and AIR to meet project demands for moisture barriers and/or attached cushions.

## EcoFlex® AIR

The next evolution in cushion backed carpet tile, EcoFlex® AIR offers substantial moisture management, sound reduction and enhanced comfort under foot.

### ADDITIONAL FEATURES

- LEED, WELL & LBC Eligible
- CRI Green Label Plus
- NSF 140 Platinum (Duracolor)
- NSF 140 Gold (ColorStrand)
- Declare Red List Free

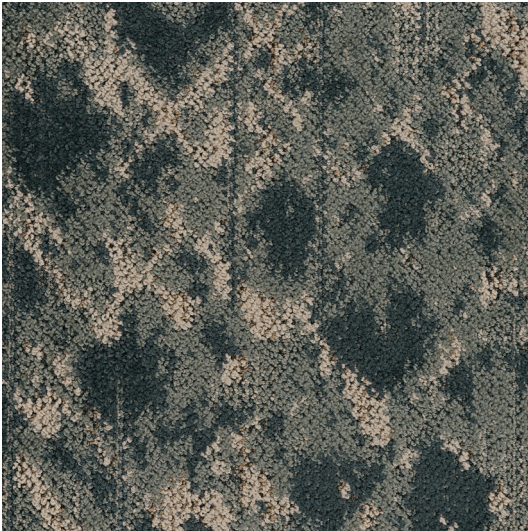






Rhythmic Drift, 636 Hillside

# Colorways BROADLOOM

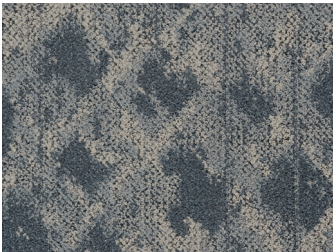


Geo Path, 636 Hillside

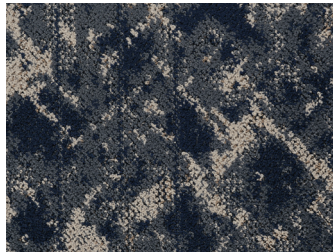


Rhythmic Drift, 636 Hillside

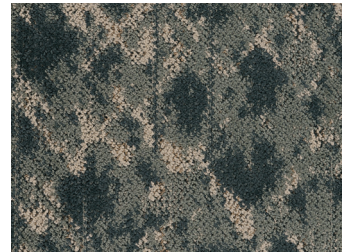
The two broadloom styles provide a beautifully handcrafted aesthetic, where grids are softened into loosely woven strands and lines become gentle brushstrokes. Shown in Geo Path.



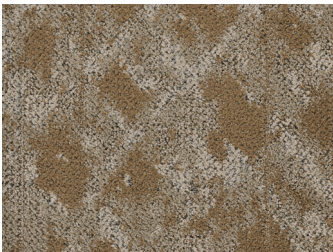
525 Ocean Spray



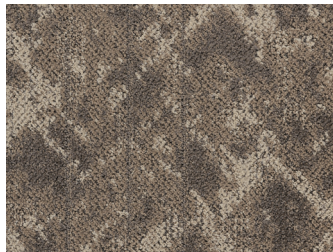
548 Riverside



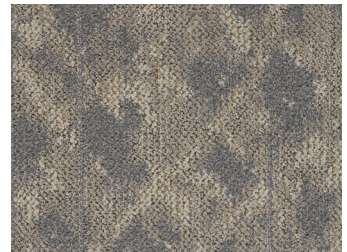
636 Hillside



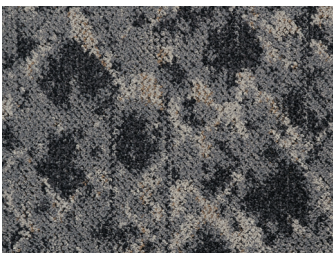
822 Sundance



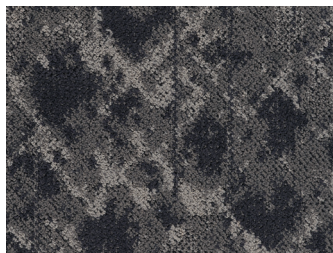
838 Pier



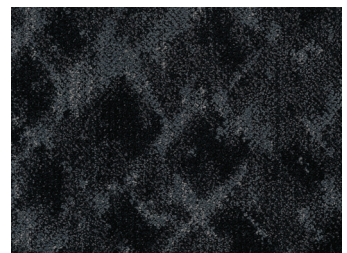
934 Stone Harbor



938 Cascade



959 Inlet



985 Nightwater



# Colorways CARPET TILE

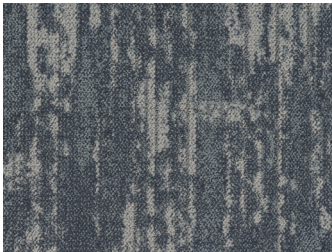


**Mapped**, 934 Pearl Haze

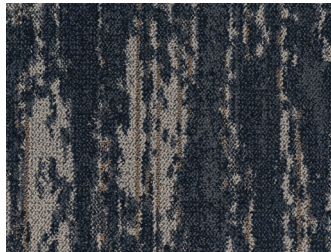


**Tonal Fields**, 934 Pearl Haze

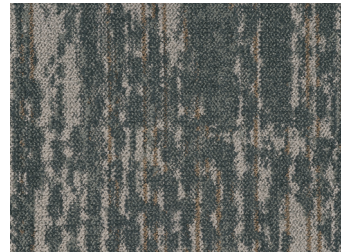
The two styles of 24" x 24" carpet tile blur the line between organic and digital, available in an earthy palette of warm neutrals, greens, and blues. Colorways shown in Mapped.



525 Blue Mist



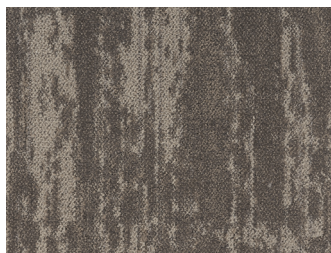
548 Mystic Bay



636 Oakmoss



822 Honey Wheat



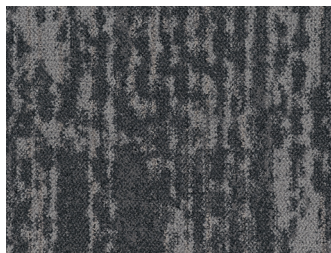
838 Truffle



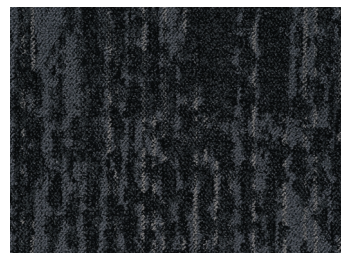
934 Pearl Haze



938 Granite



959 London Fog



985 Midnight





Adaptive Grain (12CXEA98) Carpet Tile, 525 Blue Mist - 50 SY minimum



Linear Motion (12CXDX50) Broadloom, 938 Cascade - 250 SY minimum



Tactile Blueprint (12CXEA97) Carpet Tile, 822 Honey Wheat - 50 SY minimum





Axis Blur (12CXDV89) Broadloom, 985 Nightwater - 250 \$Y minimum



Human Code (12CXDX46) Broadloom, 548 Riverside  
Second Home Studio C2071 LVT, 948 Driftwood



Data Drift (12CXEB00) Carpet Tile, 938 Granite - 50 SY minimum



Measured Hand (12CXEB43) Broadloom, 822 Sundance - 250 SY minimum

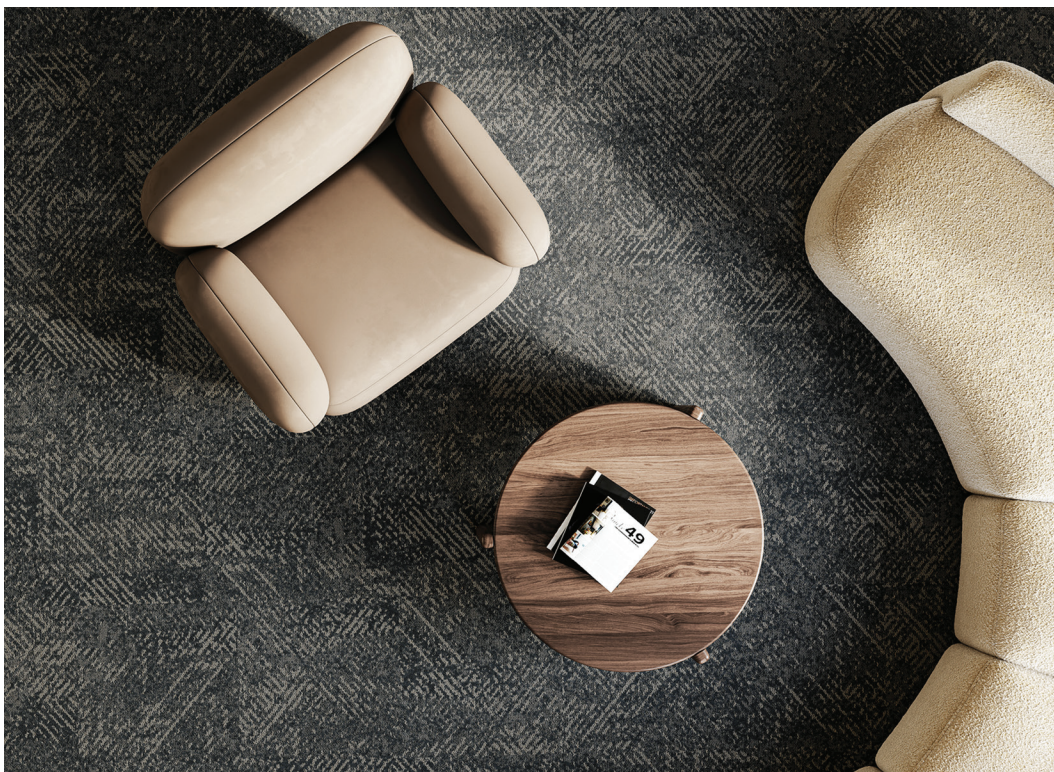


Woven Ground (12CXDX48) Broadloom, 525 Ocean Spray - 250 SY minimum





Engineered Bloom (12CXDQ34) Carpet Tile, 636 Oakmoss - 50 SY minimum



Shifting Structure (12CXEC26) Carpet Tile, 959 London Fog - 50 SY minimum



Flow State (12CXDV99) Broadloom, 838 Pier  
Secoya 5.0 C2104 LVT, 848 Hazelnut Oak



Marked Surface (12CXEB47) Broadloom, 938 Cascade  
Secoya 5.0 C2104 LVT, 848 Hazelnut Oak



Interlocked (12CXDX16) Broadloom, 959 Inlet - 250 SY minimum

# Specifications BROADLOOM

**Geo Path** (BC633)  
**Rhythmic Drift** (BC634)

## DESIGN

Width	12' width (3.66 m)
Pattern Repeat	
Geo Path	36" (W) x 41.1" (L)
Rhythmic Drift	36" (W) x 43.6" (L)
Surface Appearance	Textured Patterned Cut & Loop
Fiber Type	ColorSrand® SD Nylon
Dye Method	Solution Dyed
Colors Available	9

## PERFORMANCE

Construction	Tufted
Gauge	1/12" (47.00 rows per 10 cm)
Tufted Weight	32 oz/yd <sup>2</sup> (1,085 g/m <sup>2</sup> )
Stain Release Technology	EcoSentry Plus Stain Protection
Soil Release Technology	EcoSentry Soil Protection
Backing Material	Weldlok®
Flammability	ASTM E 648 - Class 1 Glue Down
Smoke Density	ASTM E 662 - Less than 450
Static Propensity	AATCC 134 - Under 3.5 KV

## SUSTAINABILITY

Certification	Declare Red List Free
Indoor Air Quality	Green Label Plus Certified
NSF 140	Gold
Carbon	Net Positive Carbon (Neutral +5%)

## SERVICE

Warranties	Lifetime Limited Wear Warranty, Lifetime Limited Colorfastness to Light, 10 Year Limited Colorfastness to Atmospheric Contaminants, 10 Year Stain Warranty, Lifetime Static
------------	---

Mohawk Group warrants its adhesives for the life of the original installation only when a Mohawk Group style (product) is installed. Mohawk's floor preparation procedures must be followed to ensure that the substrate has been prepared properly. The use of Mohawk branded adhesives is required to ensure optimum results and are the only approved adhesives warranted by Mohawk. Please contact your local Sales Representative for installation guidelines.

**These patterns contain inherent characteristics which may result in pattern run off and/or pattern appearance variations at the seams or tile edges (darker or lighter pattern lines). These characteristics are inherent in the patterns and are not manufacturing defects. Consideration to these characteristics should be given when selecting an installation method.**

Chair pads are recommended under office chairs with roller casters to preserve appearance retention, act as a deterrent toward delamination and to prevent premature or accelerated wear. Walk-off tiles from the Tuff Stuff II Collection are recommended at entryways to reduce soiling.

Mohawk Group is providing this architect folder for the purpose of promoting our commercial business. This folder and its samples shall remain the property of Mohawk Group. Color may vary from dye lot to dye lot. Substitution of material may be made due to improved technology, supply limitations or other factors. The performance of this product is not affected by such variations.

For current and complete specifications please visit [www.mohawkgroup.com](http://www.mohawkgroup.com)



# Specifications

CARPET TILE | DURACOLOR® WITH ECOLFLEX® ONE

**Mapped** (GT461)  
**Tonal Fields** (GT462)

## DESIGN

Size	24" x 24" (.6096 m x .6096 m)
Surface Appearance	Textured Patterned Cut & Loop
Fiber Type	Duracolor® Tricolor Premium Nylon
Dye Method	Solution Dyed
Colors Available	9

## PERFORMANCE

Construction	Tufted
Gauge	1/12" (47.00 rows per 10 cm)
Stain Release Technology	Permanent, Built into the Fiber
Soil Release Technology	EcoSentry® Soil Protection
Backing Material	EcoFlex® ONE
Flammability	ASTM E 648 - Class 1 Glue Down
Smoke Density	ASTM E 662 - Less than 450
Static Propensity	AATCC 134 - Under 3.5 KV

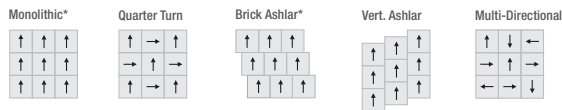
## SUSTAINABILITY

Certification	Declare Red List Free
Indoor Air Quality	Green Label Plus Certified
NSF 140	Platinum
Carbon	Net Positive Carbon (Neutral +5%)
Water	Net Positive Water (Neutral +5%)

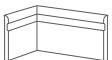
## SERVICE

Warranties	Lifetime Limited Carpet Tile Warranty, Lifetime Static, Lifetime Limited Duracolor® Stain Warranty
------------	--

Installation Instructions:



\*Tonal Fields Duracolor Only



**Elemental Edges**  
Wall Base

Elemental Edges is a portfolio of architectural and cove wall base for your finishing needs. Featuring a range of colors that coordinate with our full product line, Elemental Edges also offers 14 Quickship colors in cove wall base.



# Specifications CARPET TILE | COLORSTRAND® WITH ECOLFLEX® AIR

**Mapped** (BT635)  
**Tonal Fields** (BT636)

## DESIGN

Size	24" x 24" (.6096 m x .6096 m)
Surface Appearance	Textured Patterned Cut & Loop
Fiber Type	ColorStrand® SD Nylon
Dye Method	Solution Dyed
Colors Available	9

## PERFORMANCE

Construction	Tufted
Gauge	1/12" (47.00 rows per 10 cm)
Stain Release Technology	EcoSentry Plus Stain Protection
Soil Release Technology	EcoSentry Soil Protection
Backing Material	EcoFlex® AIR
Flammability	ASTM E 648 - Class 1 Glue Down
Smoke Density	ASTM E 662 - Less than 450
Static Propensity	AATCC 134 - Under 3.5 KV

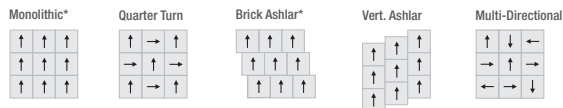
## SUSTAINABILITY

Certification	Declare Red List Free
Indoor Air Quality	Green Label Plus Certified
NSF 140	Gold
Carbon	Net Positive Carbon (Neutral +5%)
Water	Net Positive Water (Neutral +5%)

## SERVICE

Warranties	Lifetime Limited Carpet Tile Warranty, Lifetime Limited Colorfastness to Light, 10 Year Limited Colorfastness to Atmospheric Contaminants, 10 Year Stain Warranty, Lifetime Static
------------	--

Installation Instructions:



\*Tonal Fields Only



**RECOVER**  
 RECYCLING PROGRAM

Through Mohawk's ReCover Recycling Program over 160 million pounds of flooring has been diverted from landfills and giving a second life. We accept flooring from any manufacturer and will manage your entire recycling process.



Produced with recycled materials

