



Mohawk Group

Mohawk Group
Rm 802-809, The Place
No. 100 Zunyi Road
Shanghai, China
200336
86 21 8026 7000
China Made Collection

Reconnect 2.0



Reconnect 2.0

Reconnect 2.0 collection by Mohawk Group allows designers creative freedom in open space environments by using high contrast vivid color gradation and transitional textures that work together to create street smart design for any interior. A tri-transitional texture in seven accent colorways is inspired by the work of leading street artists' unique eye for fusion spaces. Also available in custom colorations, Reconnect 2.0 allows your design sensibilities to roam and discover endless creativity.



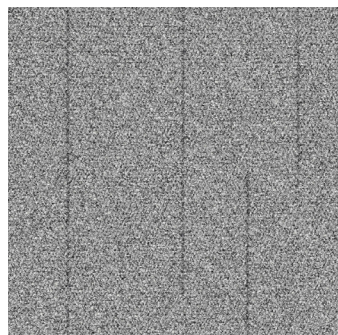


Medium Grey Base, 956A, 956B, 956C Tangent Teal



Colorways

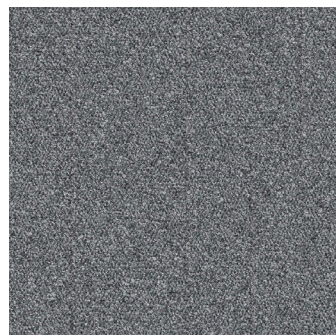
LIGHT GREY BASE



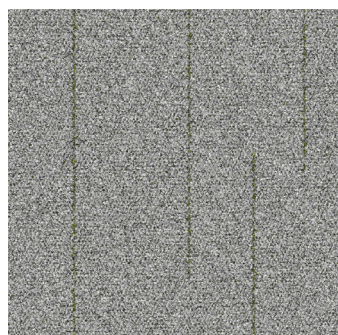
955A Grey Metal



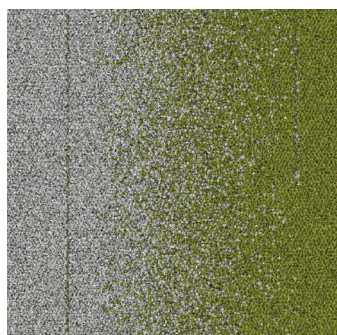
955B Grey Metal



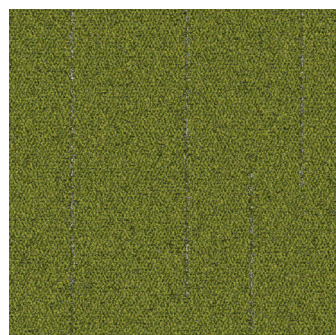
955C Grey Metal



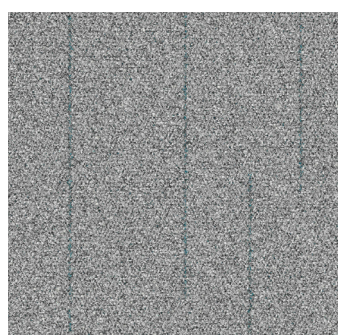
656A Jungle



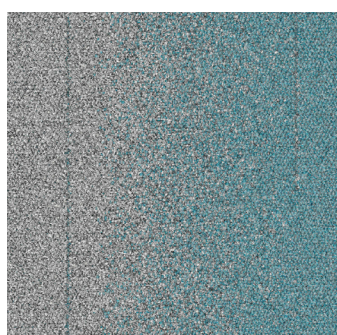
656B Jungle



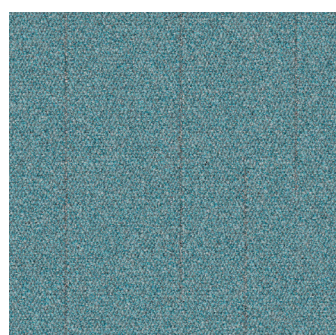
656C Jungle



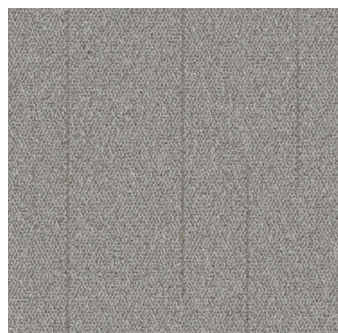
556A Filtered



556B Filtered



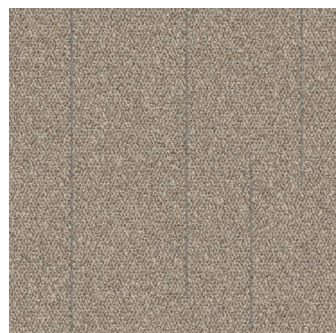
556C Filtered



751A Oatmeal



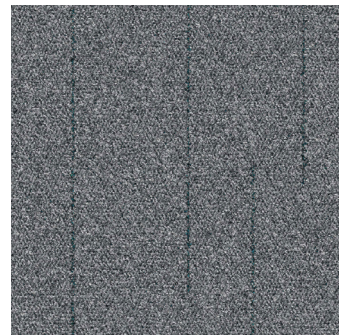
751B Oatmeal



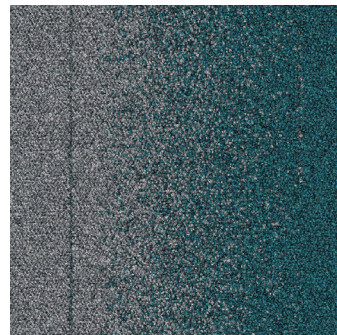
751C Oatmeal

Colorways

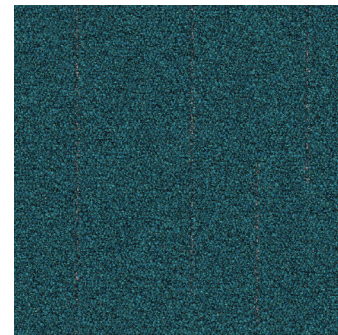
MEDIUM GREY BASE



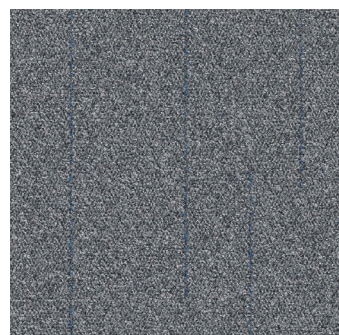
956A Tangent Teal



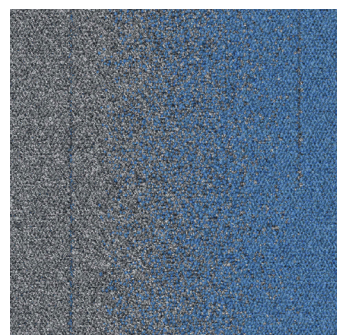
956B Tangent Teal



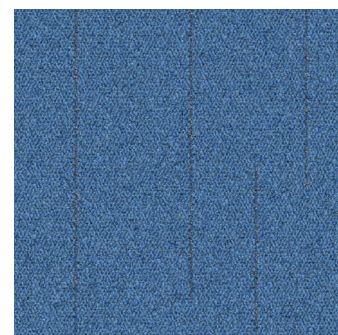
956C Tangent Teal



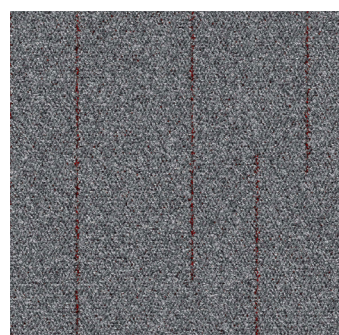
945A Infinity Indigo



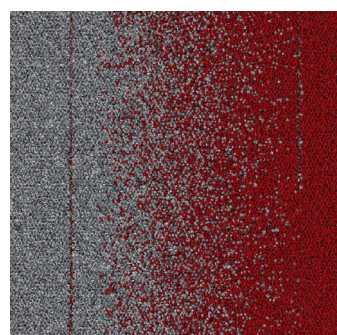
945B Infinity Indigo



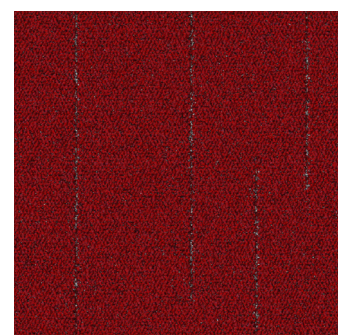
945C Infinity Indigo



943A Fractal Fire



943B Fractal Fire



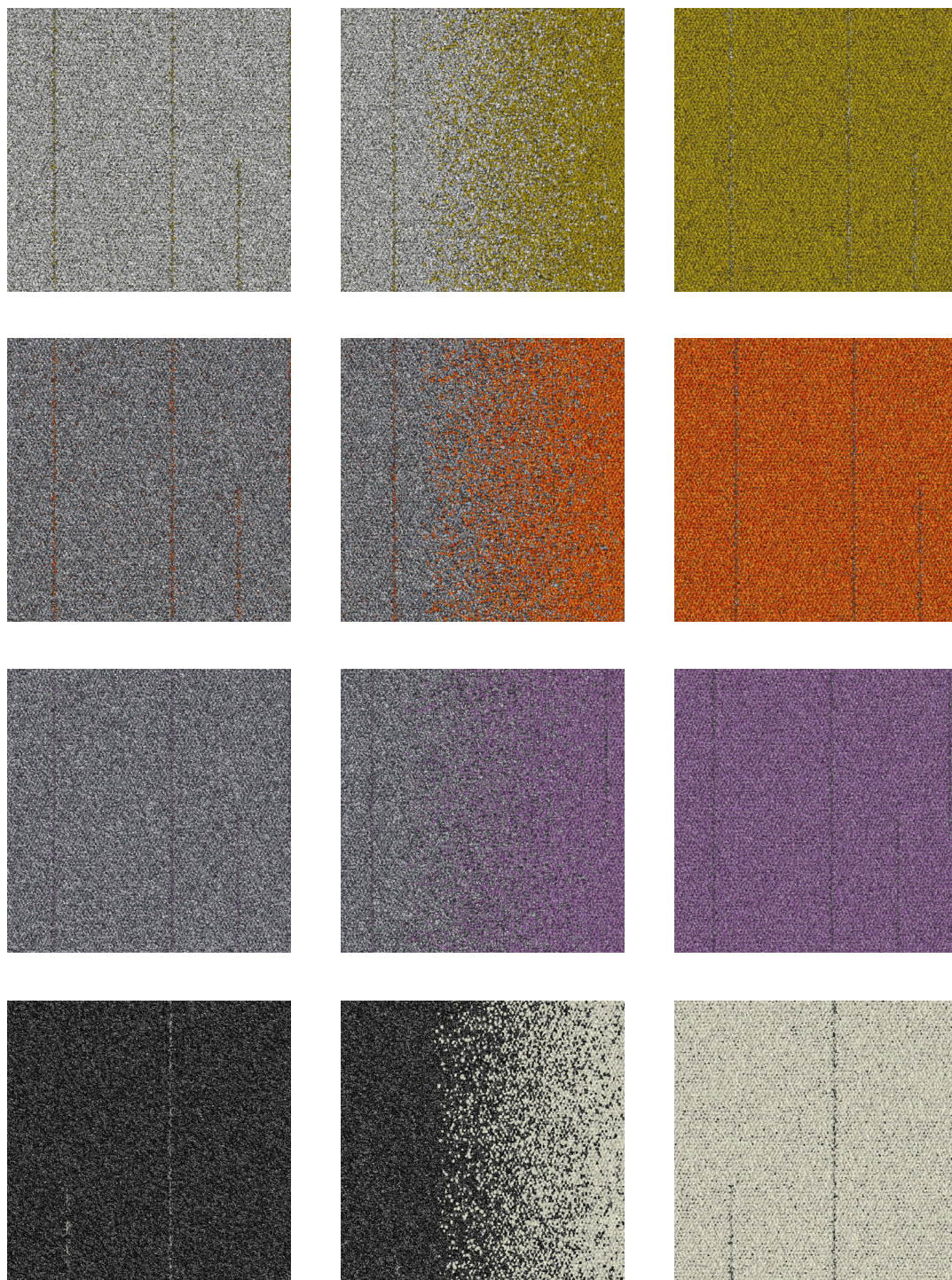
943C Fractal Fire



More Options Better Space

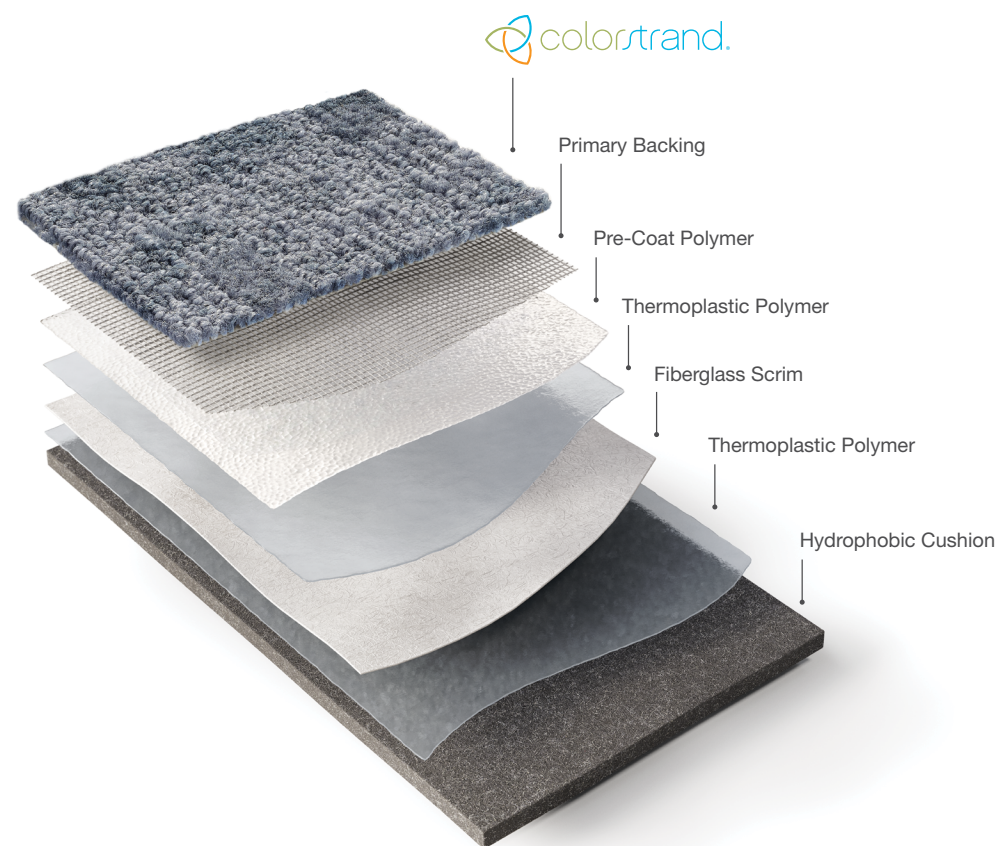
Bring the Reconnect 2.0 collection to life with custom colors. Personalize colors for your project and visualize them in a variety of spaces and order samples.*

FLOORING PERSONALIZED BY YOU



*Custom colors are make to order, please check details with your local sales representative

Backing



EcoFlex® AIR

EcoFlex® AIR exceeds the demanding expectations of our customers and improve aspects of comfort and acoustics while eliminating moisture testing.

Worry-Free Installation

EcoFlex® AIR removes concerns related to subfloor moisture and old adhesive residue, allowing installation on high-moisture slabs and over existing adhesives. EcoFlex® AIR can even be installed without any moisture testing, and if no moisture, can be installed over existing adhesives, provided there are no visible signs of moisture.¹

Enhanced Comfort

The integrated cushion provides greater comfort and helps reduce fatigue, supporting occupant productivity.

Improved Acoustics

With EcoFlex® AIR, there is virtually no sound transmission between floors. In-room noise is also drastically reduced. This decrease in auditory distraction helps contribute to feelings of wellbeing.

Simplified Maintenance

EcoFlex® AIR carpet tile features ColorStrand® Fiber, engineered to keep your flooring looking newer longer.

¹ See installation guidelines for additional details.



Specifications CARPET TILE

Reconnect 2.0 (MG22009)

DESIGN

Size	24" x 24" (.6096 m x .6096 m)
Surface Appearance	Textured Patterned Loop
Fiber Type	ColorStrand® SD Nylon
Total Thickness	7.0mm
Dye Method	Solution Dyed
Colors Available	7

PERFORMANCE

Construction	Tufted
Gauge	1/12" (47.00 rows per 10cm)
Stain Release Technology	EcoSentry Plus Stain Protection
Soil Release Technology	EcoSentry Soil Protection
Backing Material	EcoFlex® Air
Flammability	ASTM E 648 - Class 1 (Glue Down)
Smoke Density	ASTM E 662 - Less than 450
Static Propensity	AATCC 134 - Under 3.5 KV

SERVICE

Warranties	Lifetime Limited Carpet Tile Warranty 10-Year ColorStrand Stain Warranty Lifetime Static
------------	--

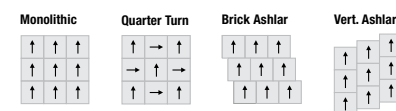
INSTALLATION SPECIFICATIONS

Backing	EcoFlex® Air
Required Adhesive	EnPress for dry slab installations Suitable adhesive for wet slab installations
Adhesive Application Method	1.6mm x 1.6mm V1-Notch Trowel
Spread Rate	5m ² per liter
Moisture & pH	Dry Slab: Moisture should not exceed 5 lbs./1000 ft ² /24 hrs. for the Vapor Emission Rate (MVER) (ASTM F1869) or 75% RH for the Relative Humidity (ASTM F2170). The surface of a concrete floor should have a pH value of between 7 to 9 in accordance with the ASTM F710.

Wet Slab: Relative Humidity of up to 95% RH and dries progressively within 12-18 months.

Note: Should the Relative Humidity or Alkalinity reading be above tolerance, please consult your Mohawk representative for professional advice before proceeding to install.

Installation Instructions:



Mohawk Group warrants its adhesives for the life of the original installation only when a Mohawk Group style (product) is installed. Mohawk's floor preparation procedures must be followed to ensure that the substrate has been prepared properly. Failure to use Mohawk Group adhesives or to follow Mohawk's floor preparation procedures will void all lifetime adhesive warranties. Please contact your local Sales Representative for installation guidelines.

These patterns contain inherent characteristics which may result in pattern run off and/or pattern appearance variations at the seams or tile edges (darker or lighter pattern lines). These characteristics are inherent in the patterns and are not manufacturing defects. Consideration to these characteristics should be given when selecting an installation method.

Chair pads are recommended under office chairs with roller casters to preserve appearance retention, act as a deterrent toward delamination and to prevent premature or accelerated wear. Walk-off tiles from the Tuff Stuff II Collection are recommended at entryways to reduce soiling.

Mohawk Group is providing this architect folder for the purpose of promoting our commercial business. This folder and its samples shall remain the property of Mohawk Group. Color may vary from dye lot to dye lot. Substitution of material may be made due to improved technology, supply limitations or other factors. The performance of this product is not affected by such variations.

For current and complete specifications please visit www.mohawkgroup.com

