



Mohawk Group

Mohawk Group
Rm 802-809, The Place No.
100 Zunyi Road
Shanghai, China
200336 86 21 8026 7000

0146C 12PG BROCHR LT

Moon Surface

Blend Gradate Join



Moon Surface

Moon Surface is fully reimagined as versatile. This collection is inspired by abstracted patterns of the moon's landscape. By layering patterns with a grid of texture, Moon Surface offers a dramatic visual with a sculptural feel. Our patented synthesis technology melds digitized lunar surface with grids of texture. Moon Surface's 3 styles can be used individually or mixed, to facilitate the coordination of designs across multiple spaces.



Cover:

Blend 989, Gradate 989, Join 989

Join 911, Join 959, Join 989



Gradate 959





Colorways

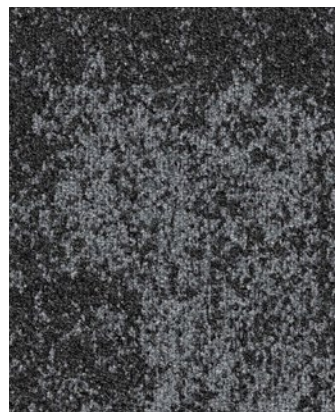
Blend



878 Dark Taupe



959 Medium Grey



989 Dark Grey

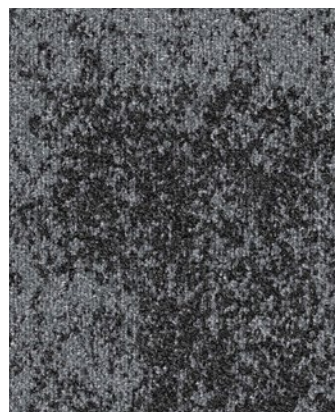
Gradate



878 Dark Taupe



959 Medium Grey



989 Dark Grey

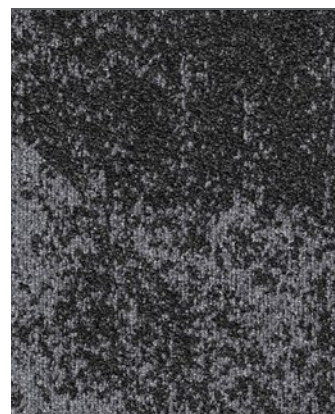
Join



878 Dark Taupe

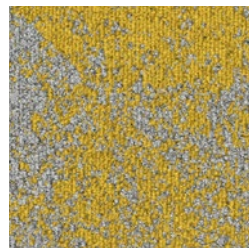


959 Medium Grey

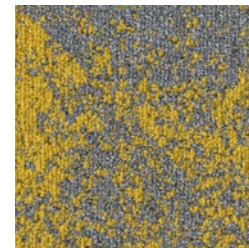


989 Dark Grey

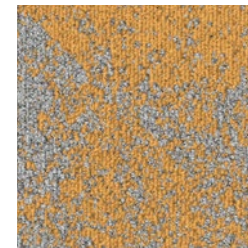
Join (continued)



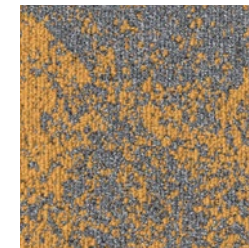
911 Medium Sunlight



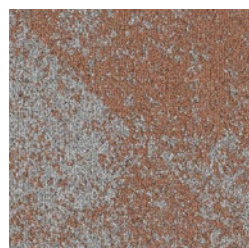
931 Dark Sunlight



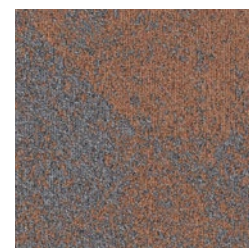
913 Medium Solar



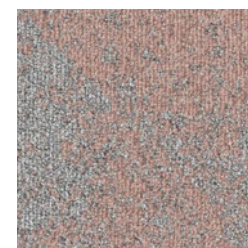
933 Dark Solar



924 Medium Copper Flame



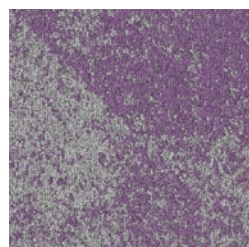
944 Dark Copper Flame



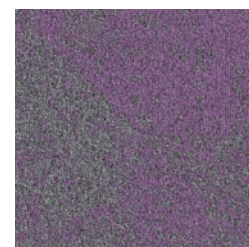
925 Medium Page Pink



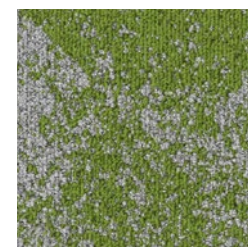
945 Dark Page Pink



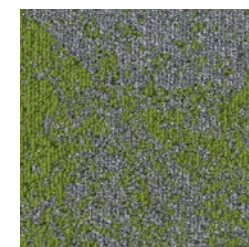
923 Medium Azalea



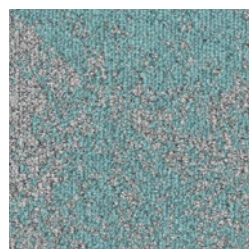
943 Dark Azalea



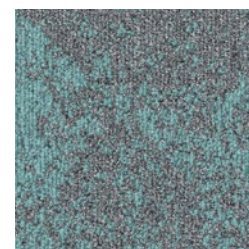
916 Medium Jungle



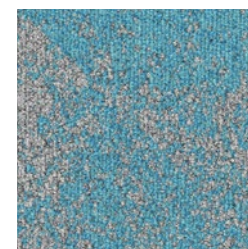
936 Dark Jungle



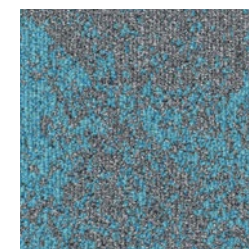
915 Medium Filtered



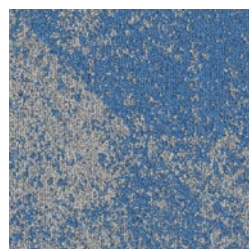
935 Dark Filtered



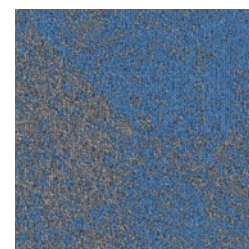
918 Medium Aquarius



938 Dark Aquarius



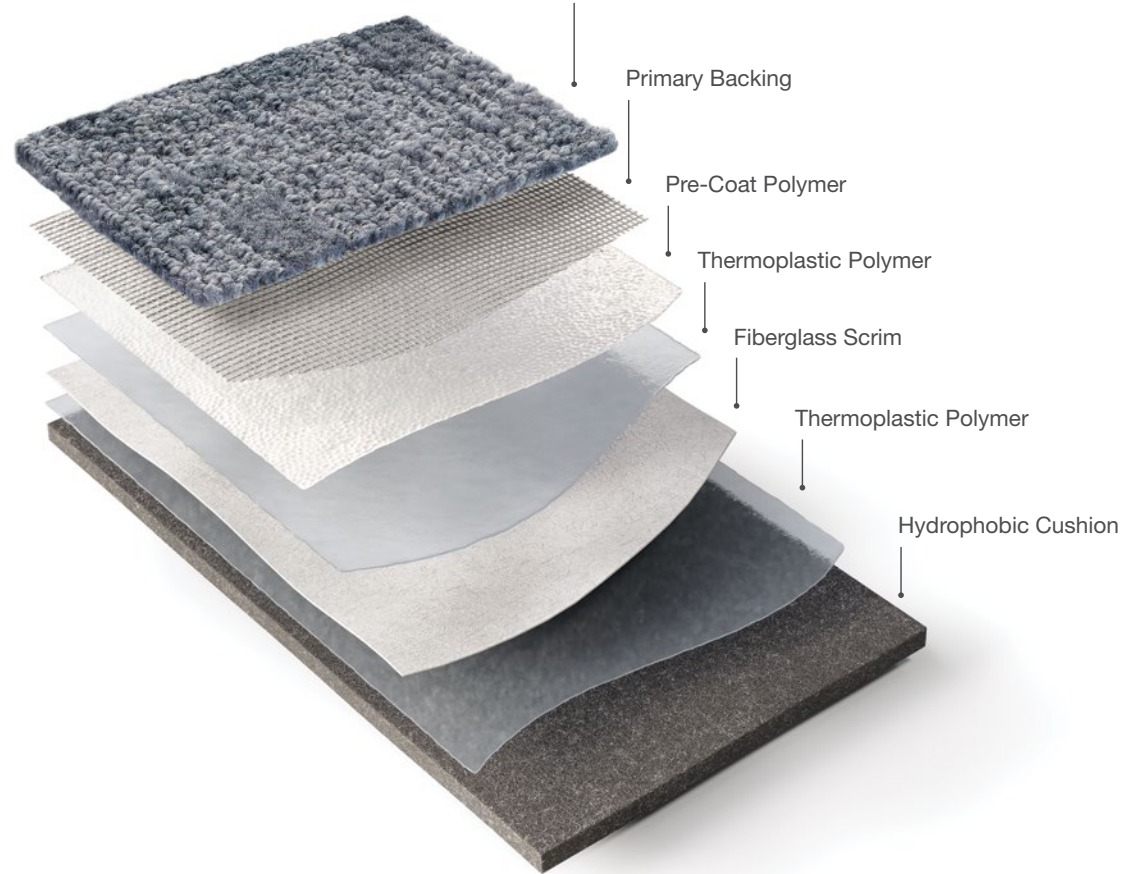
921 Medium Waterfall



941 Dark Waterfall



Backing



EcoFlex® AIR

EcoFlex® AIR exceeds the demanding expectations of our customers and improves aspects of comfort and acoustics while eliminating moisture testing.

Worry-Free Installation

EcoFlex® AIR removes concerns related to subfloor moisture and old adhesive residue, allowing installation on high-moisture slabs and if no moisture, can be installed over existing adhesives. EcoFlex® AIR can even be installed without any moisture testing, provided there are no visible signs of moisture.¹

Enhanced Comfort

The integrated cushion provides greater comfort and helps reduce fatigue, supporting occupant productivity.

Improved Acoustics

With EcoFlex® AIR, there is virtually no sound transmission between floors, in-room noise is also drastically reduced. This decrease in auditory distraction helps contribute to feelings of wellbeing.

Simplified Maintenance

EcoFlex® AIR carpet tile features ColorStrand® Fiber, engineered to keep your flooring looking newer longer.



Join 959 Mid Grey; Join 924 Medium Copper Flame



ColorStrand® FIBER

For over 15 years, ColorStrand® nylon fiber has continually exceeded the demanding expectations of our customers for their projects. With the design flexibility and color intensity of solution dyed fiber, ColorStrand® delivers lasting beauty and value.

PERFORMANCE

- Unsurpassed colorfastness to light, atmospheric contaminants, and harsh cleaning agents in ColorStrand® SD
- EcoSentry Plus Soil® and Stain Protector keeps your investment looking newer longer
- Can be engineered to achieve the most severe TARR rating

BUDGET

- Internally extruded fiber allows cost control of products
- Numerous broadloom and modular products available at value engineered budgets

DESIGN

- A wide variety of colors for excellent design flexibility

SERVICE

- 100% vertically integrated providing unsurpassed lead times and service reliability



Specifications CARPET TILE

DESIGN

| | |
|--------------------|-----------------------------|
| Size | 24" x 24" (.609 m x .609 m) |
| Surface Appearance | Textured Patterned Loop |
| Fiber Type | ColorStrand® SD Nylon |
| Dye Method | Solution Dyed |
| Colors Available | |
| Blend Tile | 3 |
| Gradate Tile | 3 |
| Join Tile | 21 |

PERFORMANCE

| | |
|--------------------------|----------------------------------|
| Construction | Tufted |
| Gauge | 1/12" (47.00 rows per 10cm) |
| Stain Release Technology | EcoSentry Stain Protection |
| Soil Release Technology | EcoSentry Soil Protection |
| Backing Material | EcoFlex® Air |
| Flammability | ASTM E 648 - Class 1 (Glue Down) |
| Smoke Density | ASTM E 662 - Less than 450 |
| Static Propensity | AATCC 134 - Under 3.5 KV |

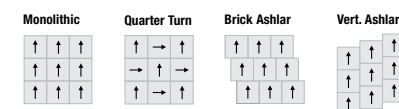
SERVICE

| | |
|------------|--|
| Warranties | Lifetime Limited Carpet Tile Warranty 10-Year ColorStrand Stain Warranty Lifetime Static |
|------------|--|

INSTALLATION SPECIFICATIONS

| | |
|-----------------------------|---|
| Backing | EcoFlex® Air |
| Required Adhesive | EnPress for dry slab installations Suitable adhesive for wet slab installations |
| Adhesive Application Method | 1.6mm x 1.6mm V1-Notch Trowel |
| Spread Rate | 5m ² per liter |
| Moisture & pH | Dry Slab: Moisture should not exceed 5 lbs./1000 ft ² /24 hrs. for the Vapor Emission Rate (MVER) (ASTM F1869) or 75% RH for the Relative Humidity (ASTM F2170). The surface of a concrete floor should have a pH value of between 7 to 9 in accordance with the ASTM F710. Wet Slab: Relative Humidity of up to 95% RH and dries progressively within 12-18 months. Note: Should the Relative Humidity or Alkalinity reading be above tolerance, please consult your Mohawk representative for professional advice before proceeding to install. |

Installation Instructions:



Mohawk Group warrants its adhesives for the life of the original installation only when a Mohawk Group style (product) is installed. Mohawk's floor preparation procedures must be followed to ensure that the substrate has been prepared properly. Failure to use Mohawk Group adhesives or to follow Mohawk's floor preparation procedures will void all lifetime adhesive warranties. Please contact your local Sales Representative for installation guidelines.

These patterns contain inherent characteristics which may result in pattern run off and/or pattern appearance variations at the seams or tile edges (darker or lighter pattern lines). These characteristics are inherent in the patterns and are not manufacturing defects. Consideration to these characteristics should be given when selecting an installation method.

Chair pads are recommended under office chairs with roller casters to preserve appearance retention, act as a deterrent toward delamination and to prevent premature or accelerated wear. Walk-off tiles from the Tuff Stuff II Collection are recommended at entryways to reduce soiling.

Mohawk Group is providing this architect folder for the purpose of promoting our commercial business. This folder and its samples shall remain the property of Mohawk Group. Color may vary from dye lot to dye lot. Substitution of material may be made due to improved technology, supply limitations or other factors. The performance of this product is not affected by such variations.

For current and complete specifications please visit www.mohawkgroup.com

