



Hit the Mark



Hit the Mark

Hit the Mark luxury vinyl tile features wood, stone and textile visuals with an 0.7mm wear layer, for a floor as stylish as it is durable. From traditional cherry to wire-brushed rustic aesthetics, Hit the Mark's diverse selection of woods are available in rich, nature-inspired colors.

The substantial wide planks feature a straight grain visual. Traditional slate, sophisticated limestone and trend-forward striated textiles in versatile natural colors, as well as subtle grayed blues and greens, complete the range of visuals for Hit the Mark.



Cover:

Hit the Mark Wood 937 Deliver | Ground Breaking 929

Hit the Mark Wood Color 956 Jackpot | Fractal Ground 949 Easy Breezy,
mellowD 949 Easy Breezy

Hit the Mark GLUE DOWN LVT

PERFORMANCE

- 3mm overall thickness and 0.7mm commercial wear layer for superior durability
- M-Force® Ultra finish for stain and wear resistance
- Polish-optional surface provides easy maintenance and lower life cycle cost
- Versatile plank and tile sizes allow for a wide variety of installation designs
- Broad selection of straight-grain wood visuals in warm and cool tones
- Modern textile and stone visuals featuring sophisticated, calming neutrals
- Designed alongside our carpet collections for easy coordination
- FloorScore® Certified
- Limited 20 Year Commercial Warranty



Hit the Mark Stone 938 The Mark

Mohawk Group

Colorways

Hit the Mark Wood 18.42 cm x 121.92 cm



241 Make It



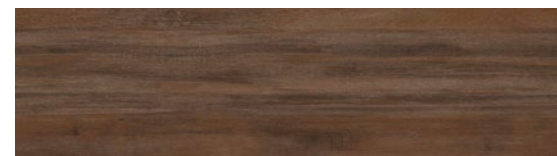
262 Precise



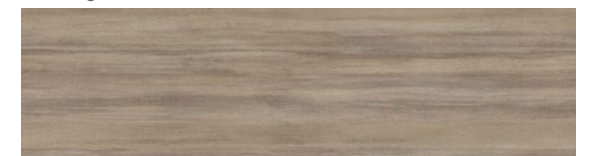
751 Prevail



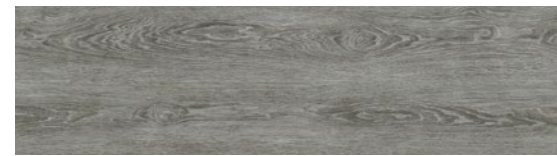
852 Target



862 Exact



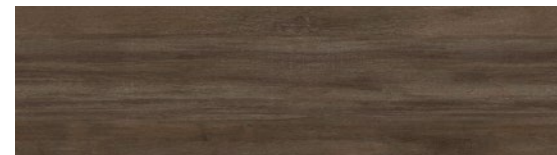
937 Deliver



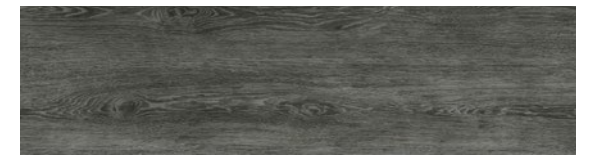
941 Focus



956 Jackpot

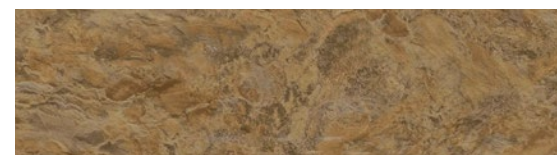


979 Aim

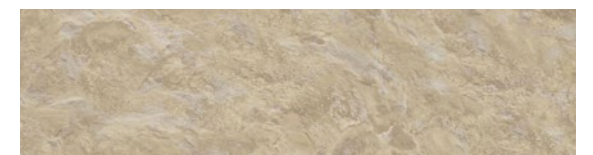


978 Score

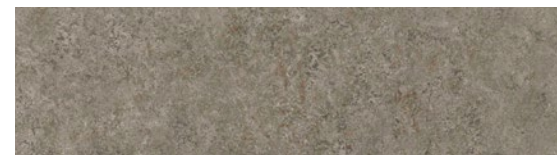
Hit the Mark Stone 30.48 cm x 60.96 cm



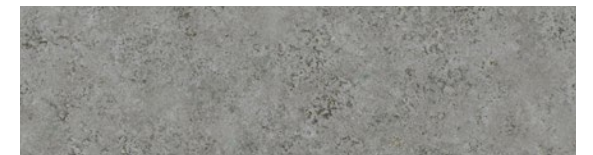
651 Strike



938 The Mark

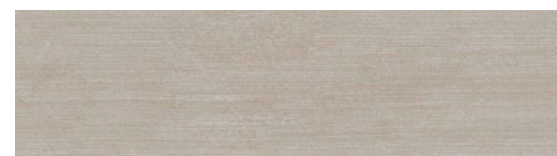


955 Grade



965 Avail

Hit the Mark Textile 45.72 cm x 91.44 cm



721 Accomplish



936 Accurate



946 Online



968 Success

Specifications HIT THE MARK (C0095)

Style Name	Hit the Mark
Style Number	C0095
Brand	Mohawk Group – Hard Surface
Product Type	Enhanced Resilient Tile

DESIGN

Overall Gauge	3mm
Wear Layer	0.7mm
Finish	M-Force® Ultra
Colors Available	
Wood Visuals	10
Textile Visuals	4
Stone Visuals	4
Size	
Wood Visuals	18.42 cm x 121.92 cm
Stone Visuals	30.48 cm x 60.96 cm
Textile Visuals	45.72 cm x 91.44 cm
Edge Profile	Straight Edge
Surface Profile	Emboss
Packaging	
Wood Visuals	3.59m ² /ctn, 16 pcs/ctn
Stone Visuals	3.34m ² /ctn, 18 pcs/ctn
Textile Visuals	3.34m ² /ctn, 8 pcs/ctn

PERFORMANCE

Construction	Commercial Grade Enhanced Resilient Tile
Classification	ASTM F1700 - Class III, Type A - Smooth, Type B - Embossed
Squareness	ASTM F2055/F2421 - Passes - 0.10" max
Size and Tolerance	ASTM F2055/F2421 - Passes - ±0.16"/linear foot
Thickness	ASTM F386 - Passes - as specified ±0.005"
Flexibility	ASTM F137 - Passes - 1" mandrel
Dimensional Stability	ASTM F2199 - Passes - ≤ 0.020"/linear foot
Static Load Limit	ASTM F970 - Passes, modified at 1500 psi
Residual Indentation	ASTM F1914 - Passes - Average less than 8%, maximum single reading 10%
Slip Resistance	ASTM C1028 - Passes - Wet: ≥ 0.5
Resistance to Chemicals	ASTM F925 - Passes - No more than a slight change
Resistance to Light	ASTM F1515 - Passes - ΔE ≤ 8
Resistance to Heat	ASTM F1514 - Passes - ΔE ≤ 8
Critical Radiant Flux	ASTM E648 - Passes - Class 1 (>0.45 W/cm ²)
Smoke Density	ASTM E662 Part A - Less than 450

SUSTAINABILITY

Certification	FloorScore® Certified
---------------	-----------------------

SERVICE

Warranty	Limited 20 Year Commercial Warranty
----------	-------------------------------------



Mohawk Group



Mohawk Group
Rm 802-809, The Place
No. 100 Zunyi Road
Shanghai, China
200336
86 21 8026 7000