



# SPIRIT MODERNE



MUSEUM OF INTERNATIONAL  
**FOLK ART**



# SPIRIT MODERNE

Spirit Moderne is a captivating soft surface portfolio for hospitality interiors inspired by Durkan's collaboration with the Museum of International Folk Art in Santa Fe, N.M. Alluring ethnographic textiles from the world over breathe inspiration into new motifs and bring historical source material into the context of the modern era. The rich history behind textured garments spanning ceremonial to everyday use is revived and infused with a contemporary aesthetic for a hospitality audience.

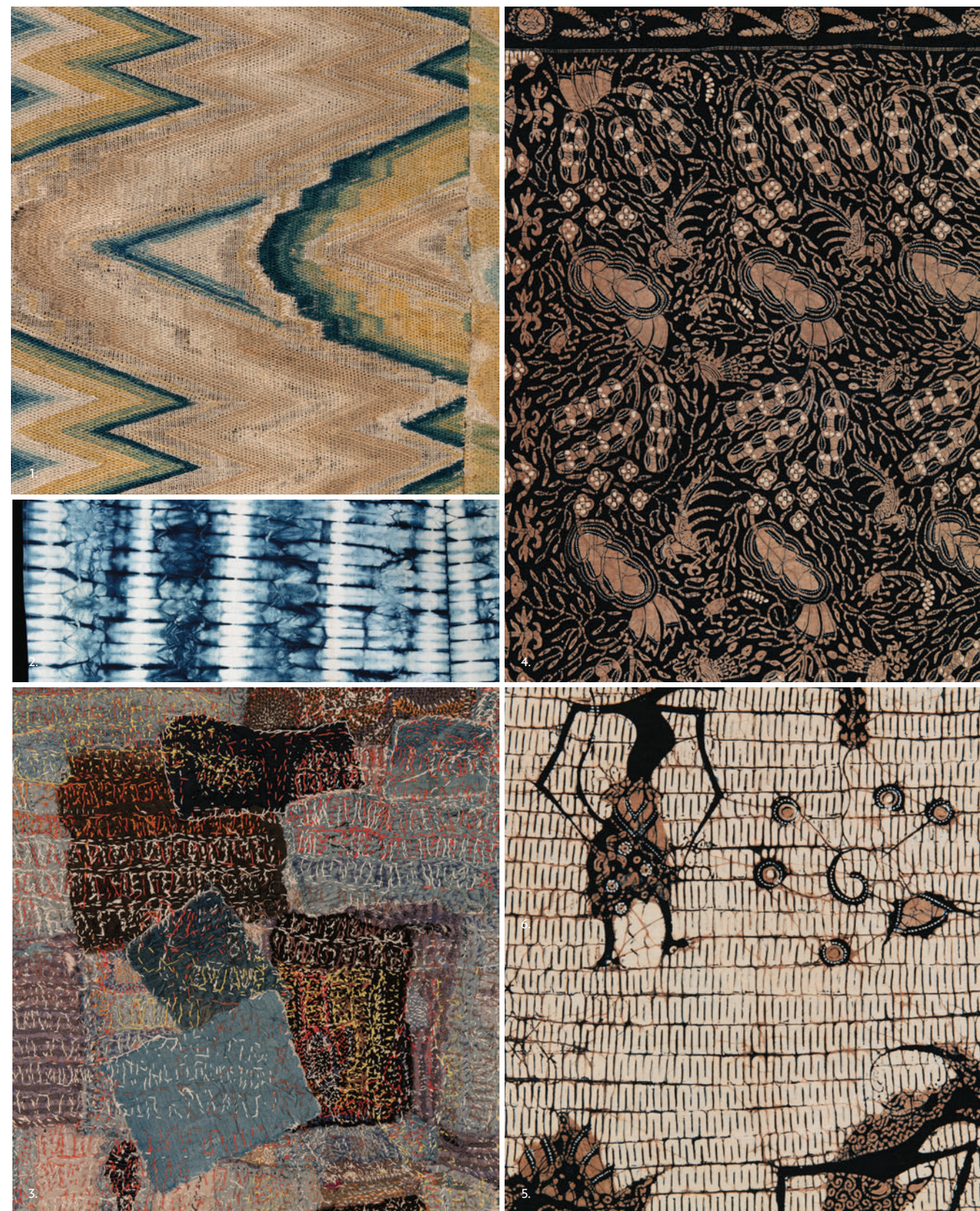
Designers considered both the patterning and cultural tradition from which these textiles originated to conceive a new design language infused with the soul of its creators. The museum's 30,000 piece textile and dress collection provided a wealth of inspiration incorporating unique resources from 100 countries across six continents. The collection's influence is representative of both the culture's and the artist's soul, and now of the carpet designers, while still referencing the integrity of the original materials.

Translating the cultural material into Durkan's broadloom and carpet plank, the design team honored the original motifs by creating an amalgam of new patterning instead of simply replicating them. The goal of the collaboration was to translate the textile inspiration into a new language that would connect the history, creativity and soul of the original material with hospitality end users to illicit the same emotions felt by designers when first surveying the Museum textiles.

Spirit Moderne is featured in Definity, Durkan's exclusive manufacturing technology which surpasses traditional luxury carpet by offering multi-level textures, more than twice the definition, superior performance and unmatched sustainability. The collection is also offered in Durkan's Synthesis, Pattern Perfect, PDI carpet tile and tufted broadloom.



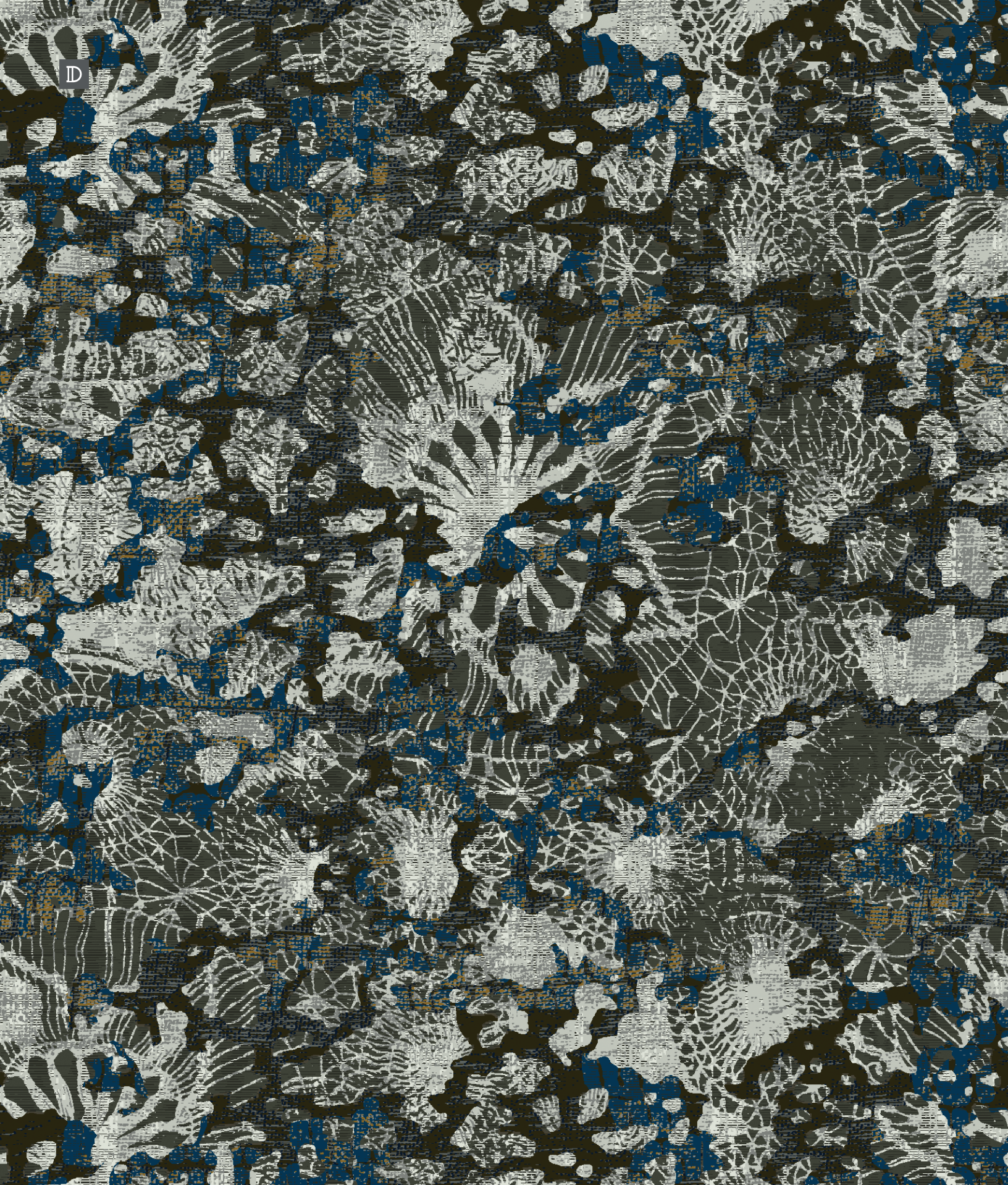
A portion of the proceeds from Durkan's new collection supports the Museum of International Folk Art in its mission to preserve and promote the artistic and craft traditions of the world's artisans.



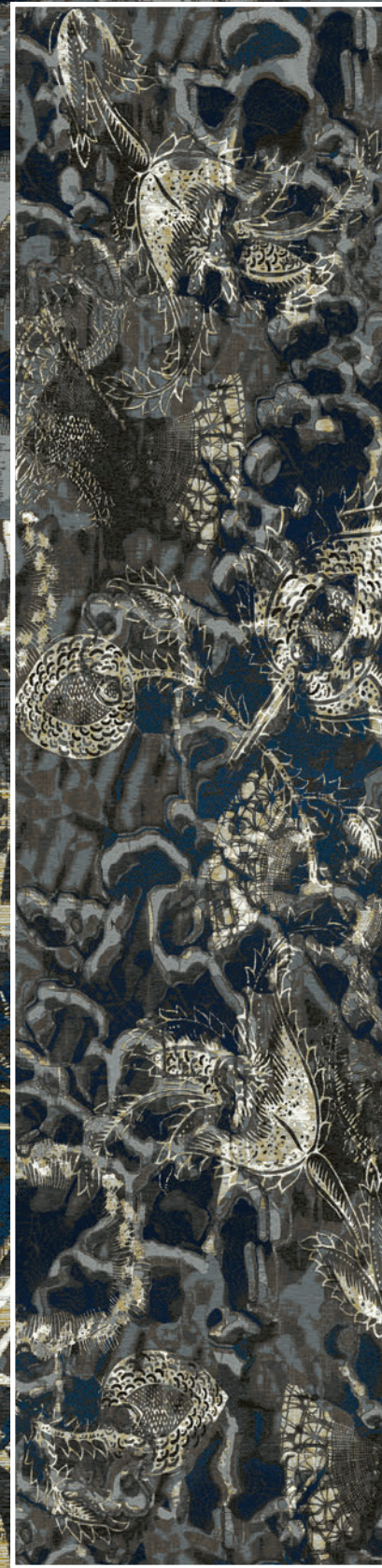
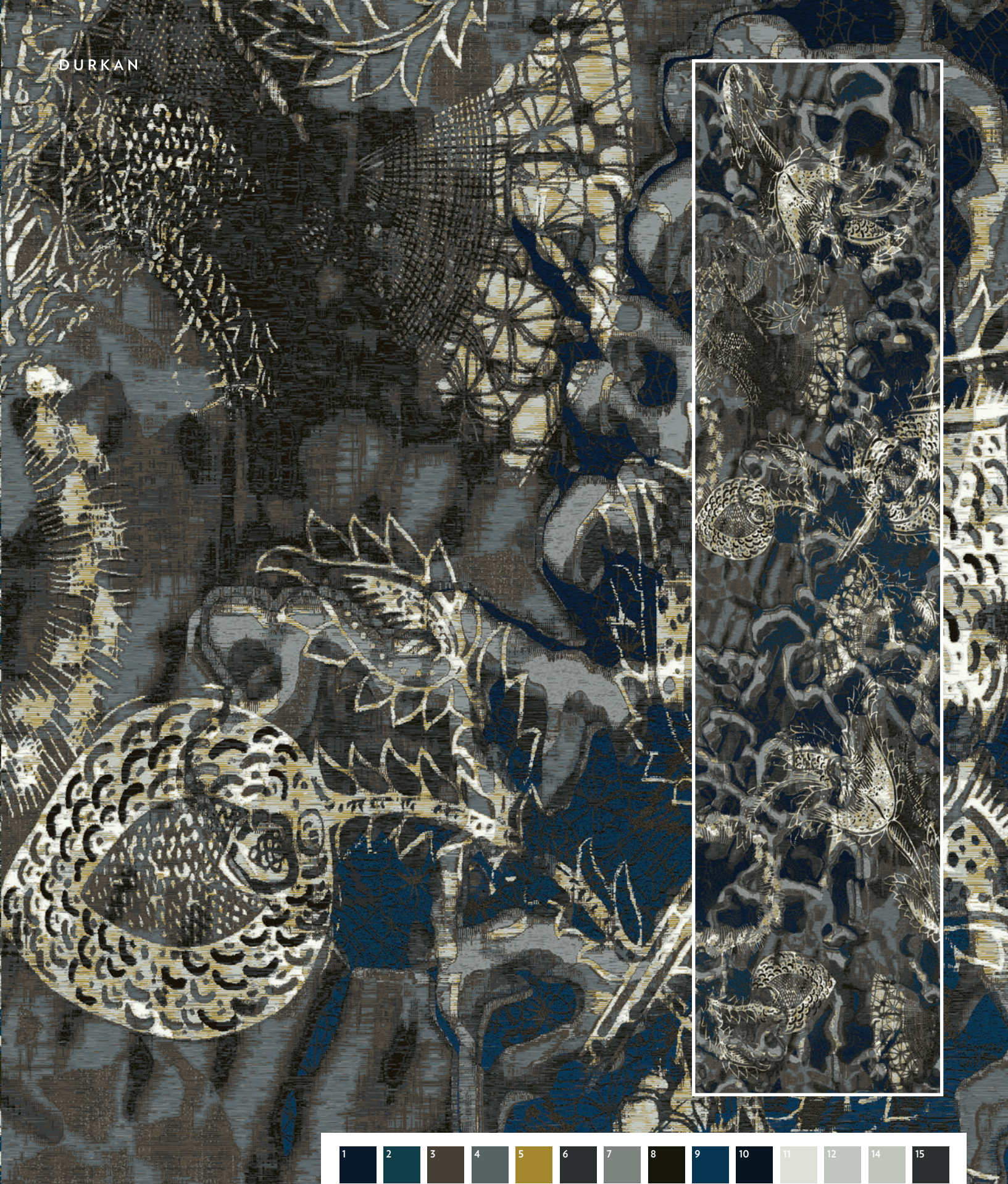
1. Bedspread, ca. 1950, New Mexico. Linen, silk. Museum of International Folk Art, gift of the Historical Society of New Mexico. A.5.2000.50  
 2. Skirt, ca. 1958, Kaduna, Nigeria, Africa. Cotton. Museum of International Folk Art, International Folk Art Foundation Collection. FA. 1996.41.1  
 3. Policarpio Valencia, embroidered textile, 20th century, New Mexico. Wool, cotton and cotton string. Museum of International Folk Art, bequest of Cady Wells. A.9.1954.28  
 4. Skirt fragment, ca. mid-20th century, Java, Indonesia. Cotton batik and block print. Museum of International Folk Art, bequest of Margretta S. Dietrich. A. 1961. 10.12  
 5. Skirt fragment, ca. mid-20th century, Java, Indonesia. Cotton batik. Museum of International Folk Art, bequest of Margretta S. Dietrich. A. 1961. 10.12



D



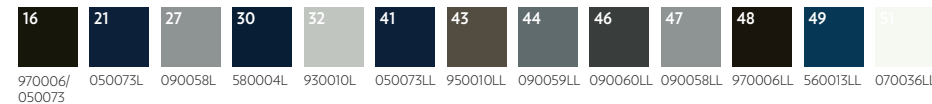
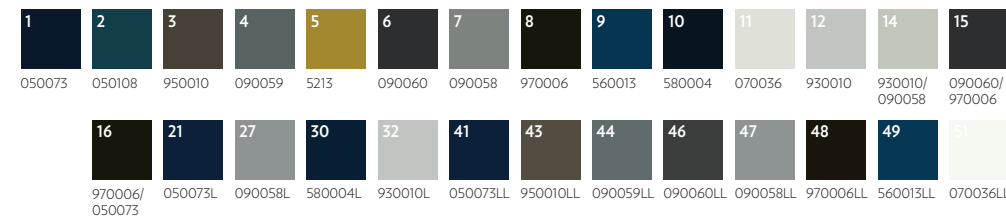
DURKAN



QTWFA71492-MW463  
12' (w) X 12' (l)  
Broadloom, Definity



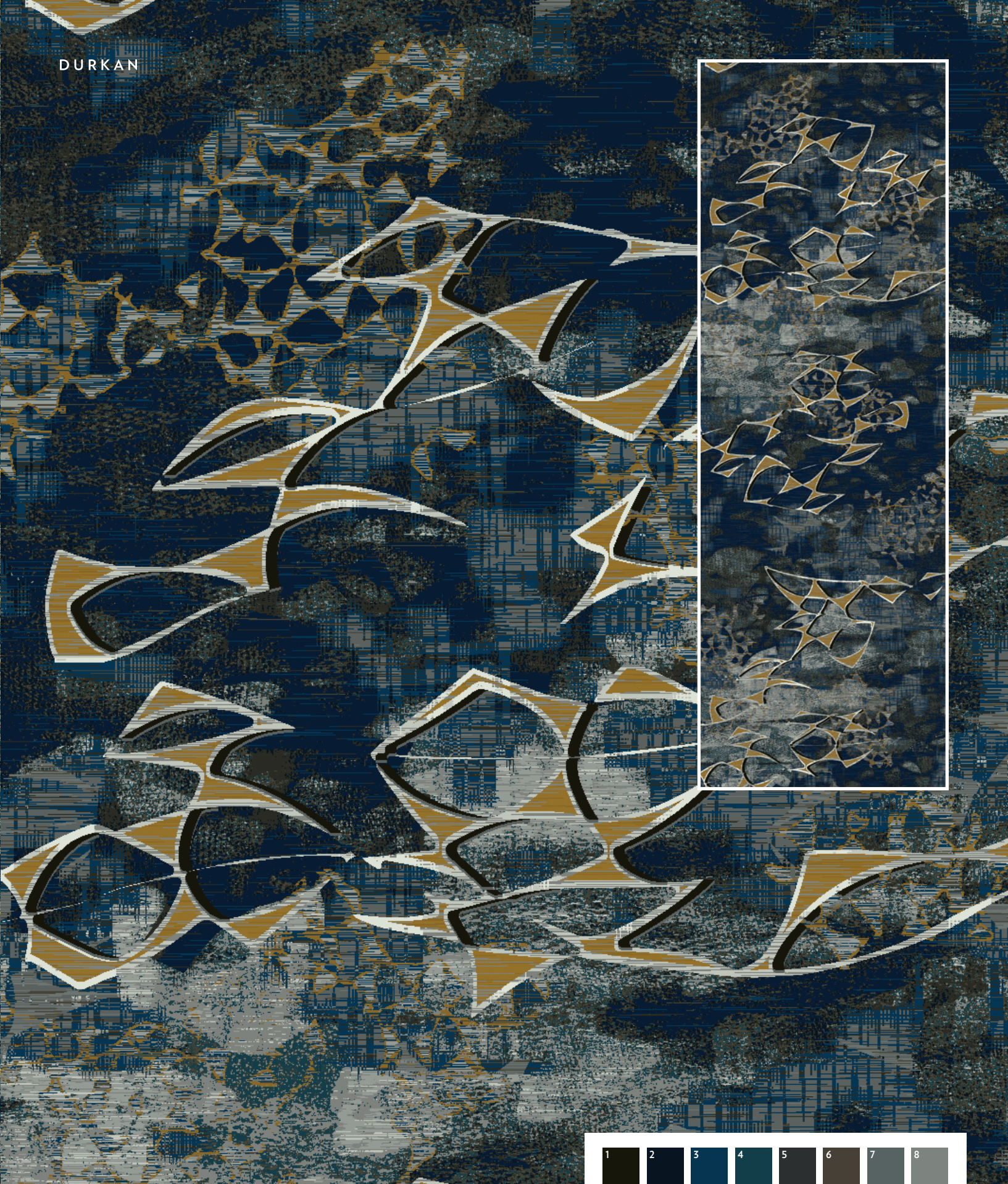
QTFFA71483-MW463  
12' (w) X 50' (l)  
Rug, Definity



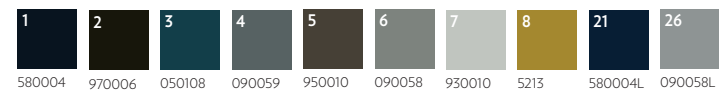


D

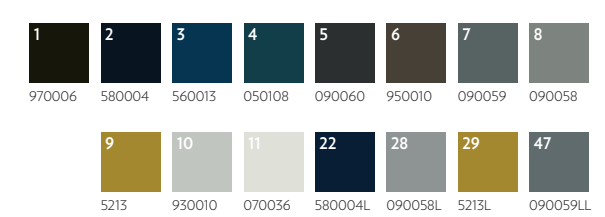
DURKAN



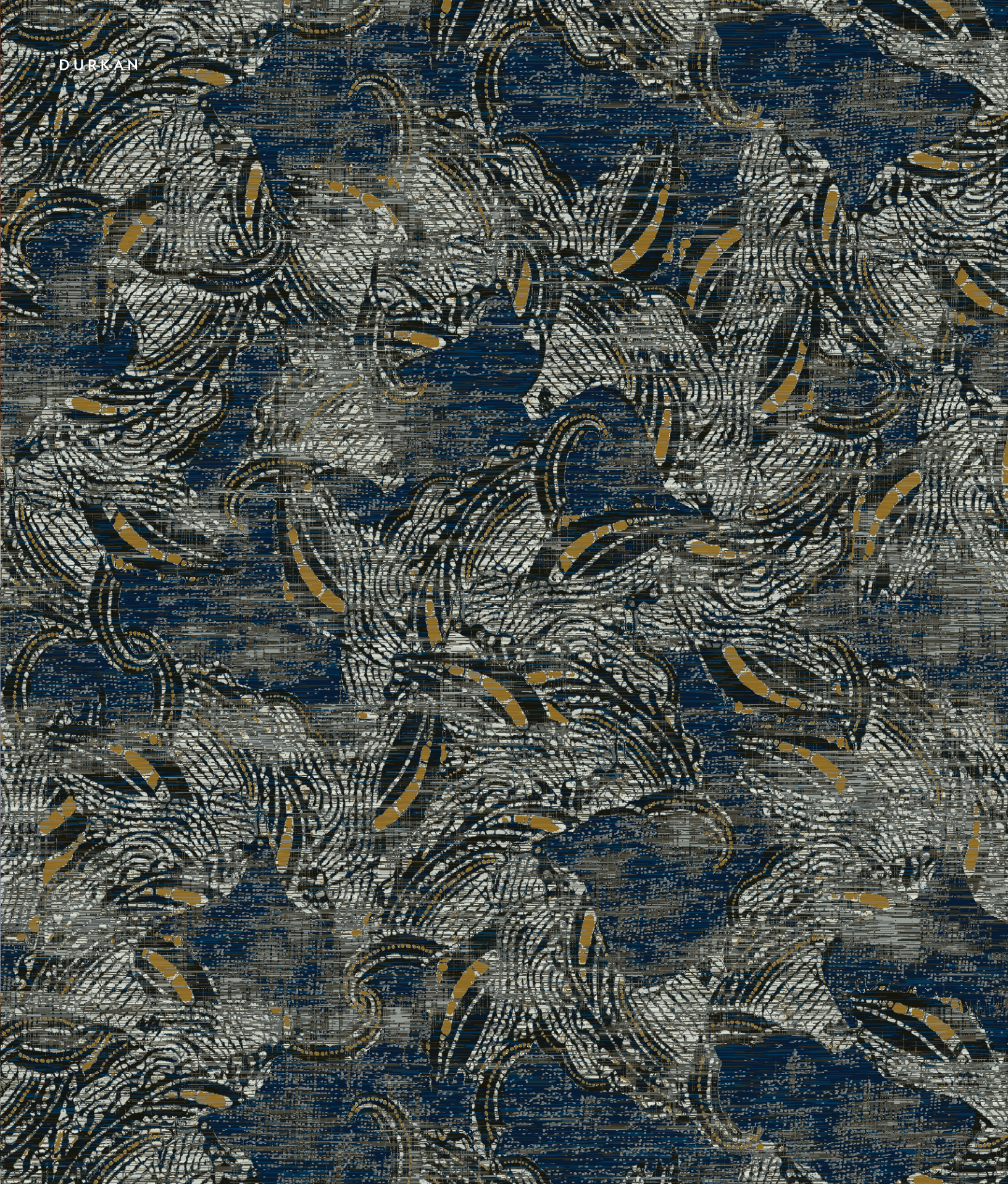
QTWFA71491-MW463  
12' (w) X 7' (l)  
Broadloom, Definity



QTWFA71501-MW463\*  
7'6" (w) X 24' (l)  
Corridor, Definity  
\*Has less than 25% Loop







DURKAN

QWFA71499-MW463\*  
 12' (w) X 12' (l)  
 Broadloom, Definity  
 \*Has less than 25% loop

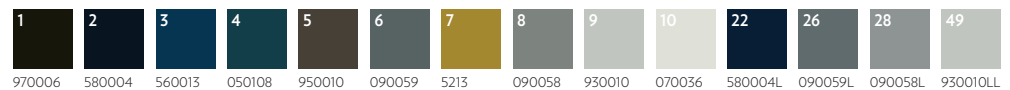
1	2	3	4	5	6	7	8	9	10	22	28	47
970006	580004	560013	090060	950010	090059	090058	5213	930010	070036	580004L	5213L	090058LL



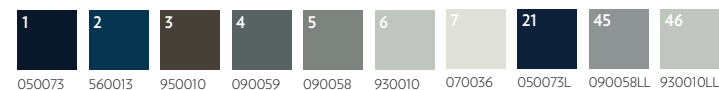
D

DURKAN

QTFWA71493-MW463  
12' (w) X 12' (l)  
Broadloom, Definity



QTFWA71494-MW463\*  
12' (w) X 12' (l)  
Broadloom, Definity  
\*Has less than 25% loop

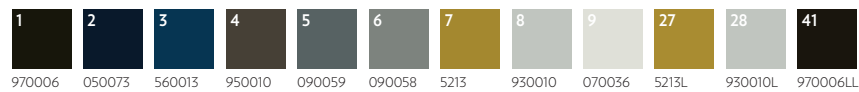




D

DURKAN

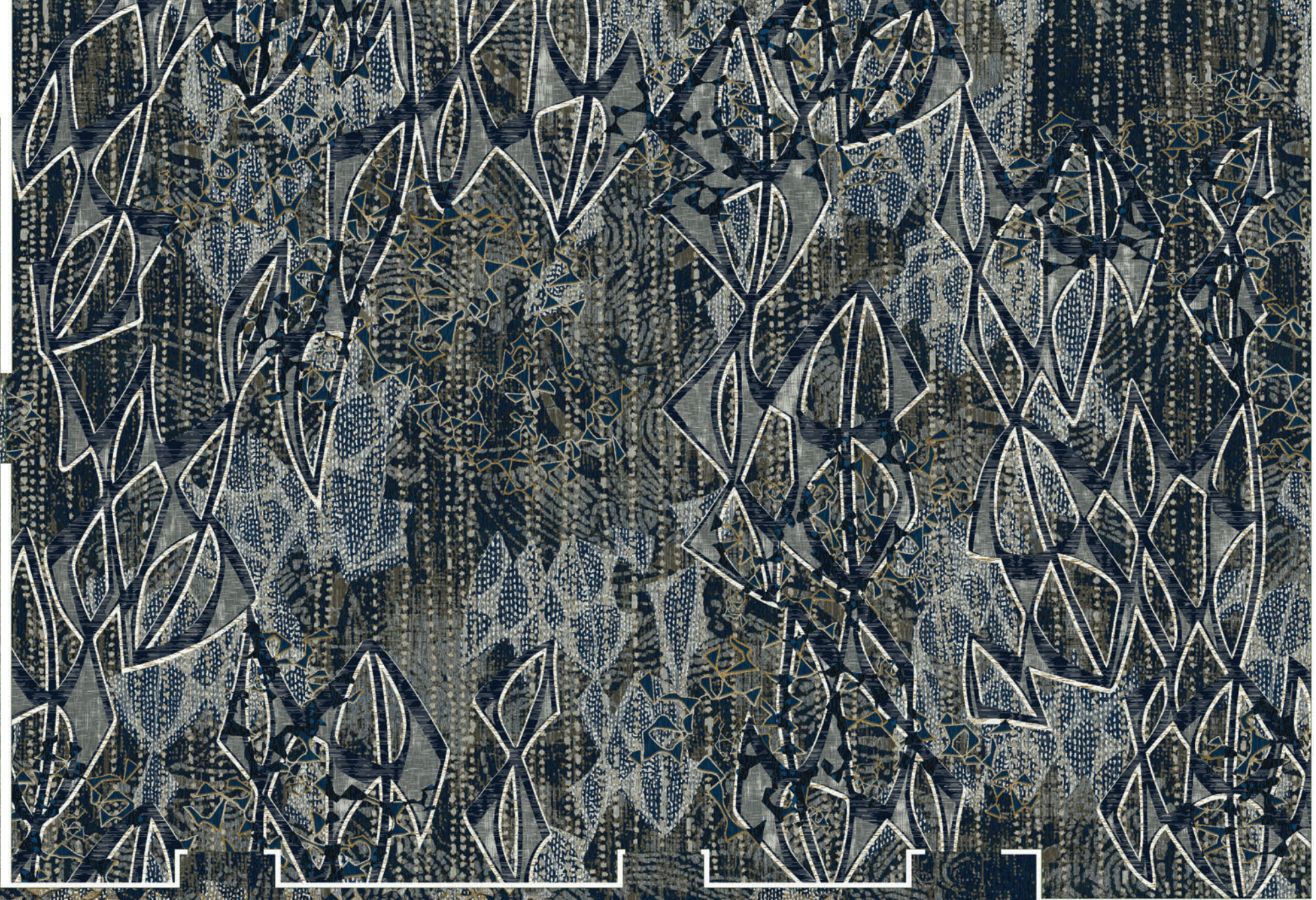
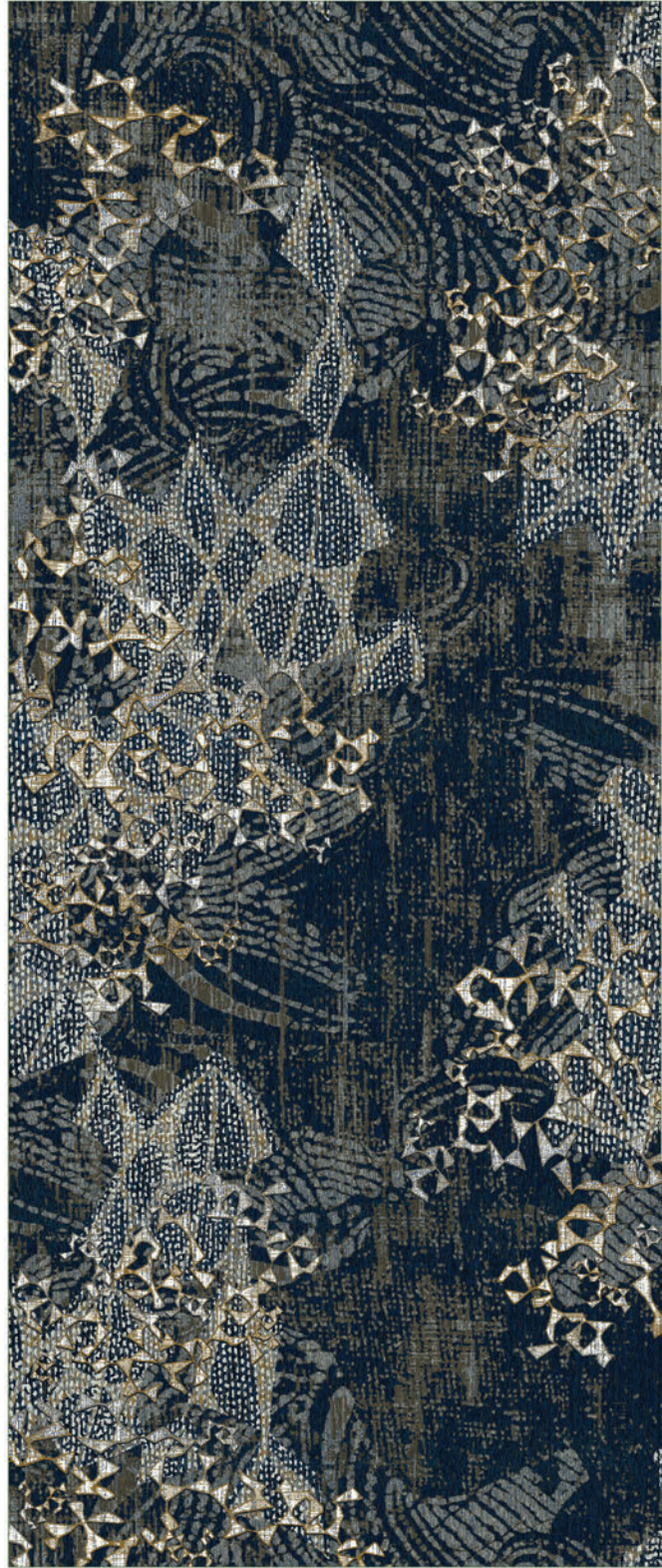
QWFA71495-MW463\*  
 12' (w) X 12' (l)  
 Broadloom, Definity  
 \*Has less than 25% loop



QWFA71497-MW463\*  
 12' (w) X 12' (l)  
 Broadloom, Definity  
 \*Has less than 25% loop







**QTFWA71505-MW463**  
48' (w) X 65' (l)  
Spectra Fit Ballroom, 48 oz Definity

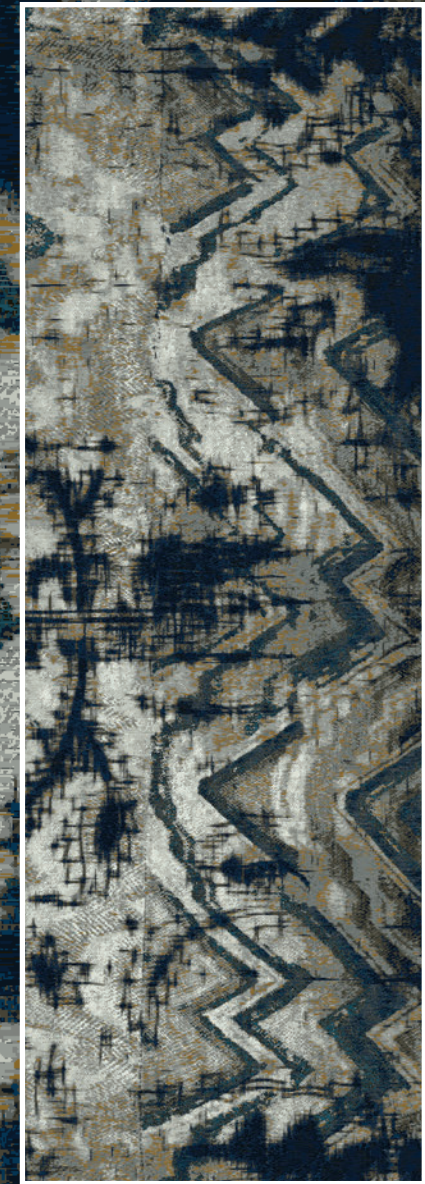
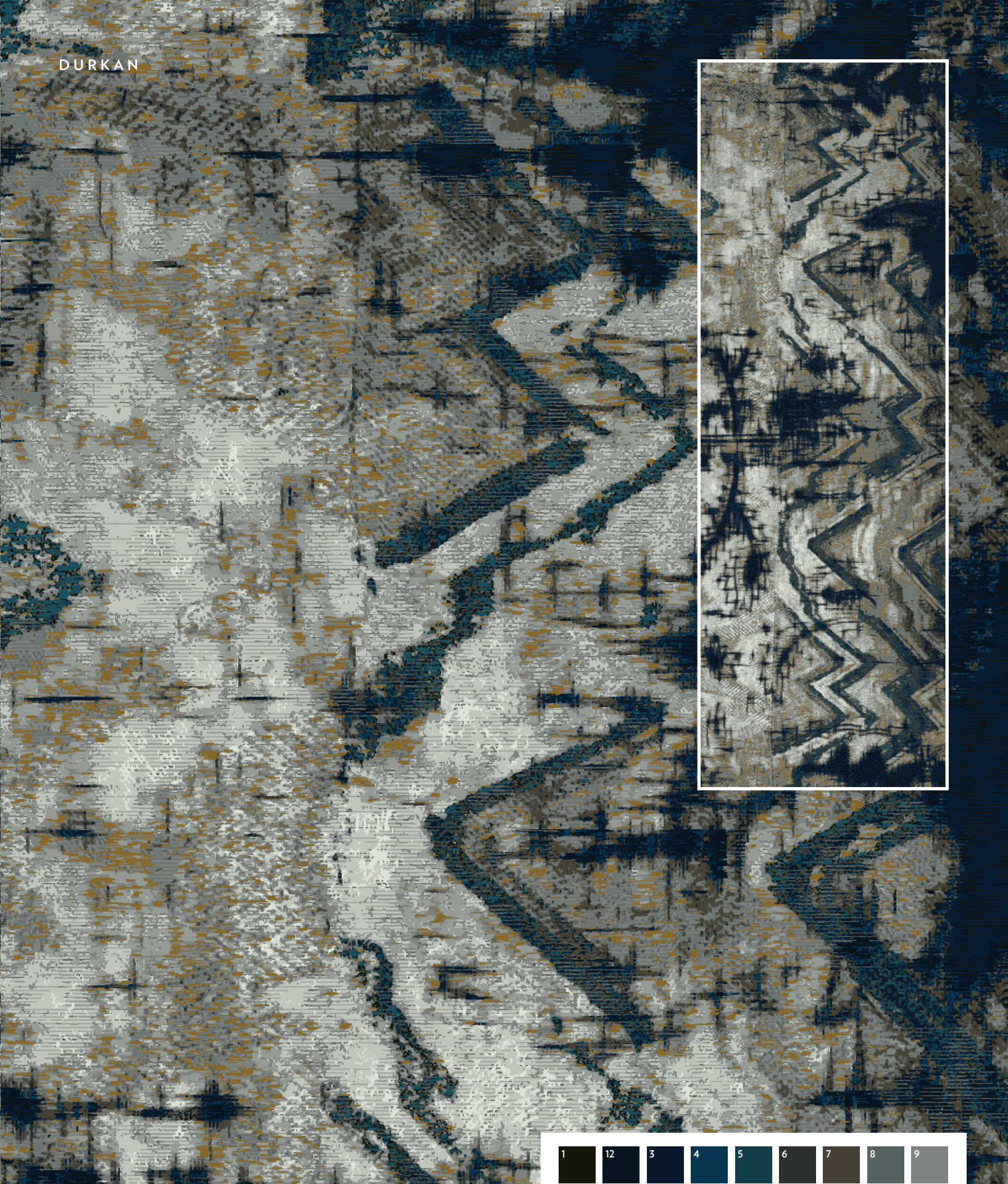
**QTFWA71504-MW463**  
60' (w) X 72' (l)  
Spectra Fit Prefunction, 48 oz Definity

**QTFWA71503-MW463**  
15' (w) X 20' (l)  
Spectra Fit Meeting Room, 48 oz Definity

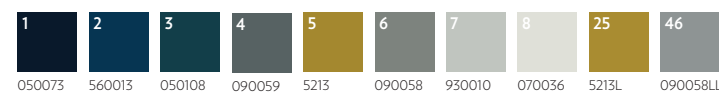


D

DURKAN



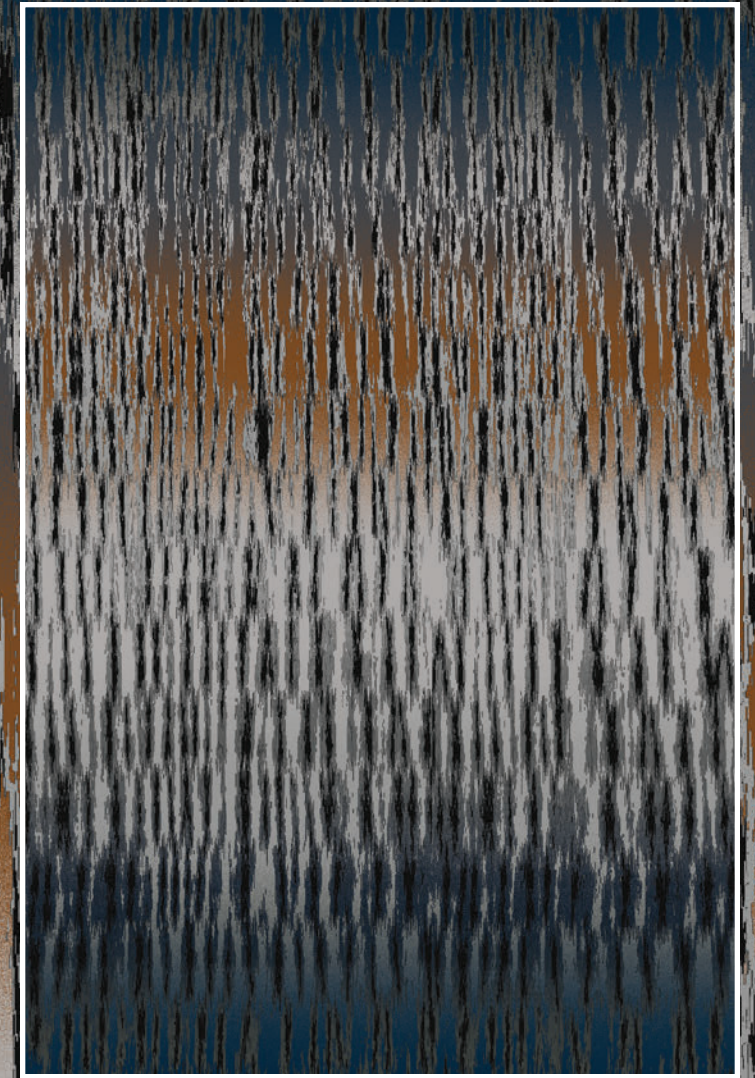
QTWFA71498-MW463\*  
12' (w) X 12' (l)  
Broadloom, Definity  
\*Has less than 25% loop



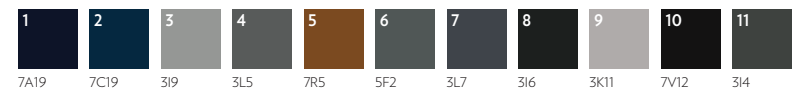
QTWFA71502-MW463\*  
7'6" (w) X 24' (l)  
Corridor, Definity  
\*Has less than 25% Loop







FA72798-MW463  
12' (w) X 18' (l)  
Broadloom, PDI

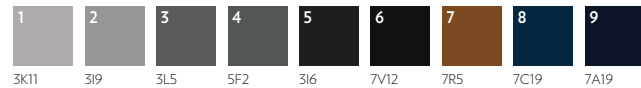




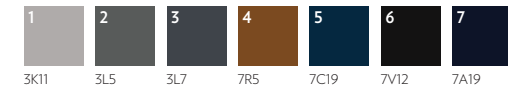
D

DURKAN

FA74573-MW463  
12' (w) X 12' (l)  
Broadloom, PDI



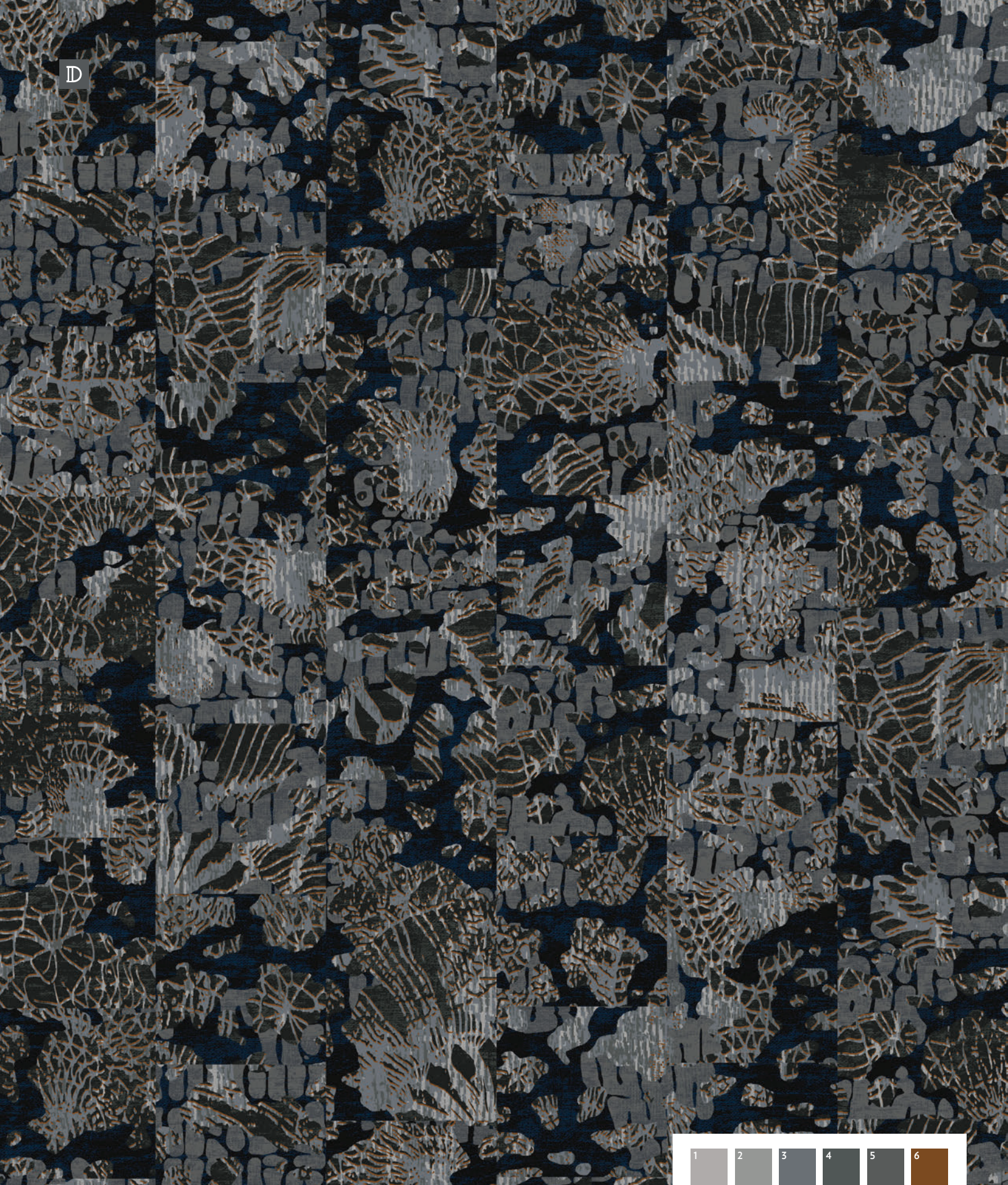
FA74296-MW463  
12' (w) X 18' (l)  
Broadloom, PDI



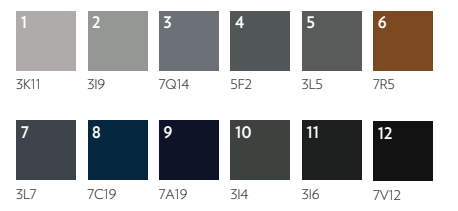


D

DURKAN



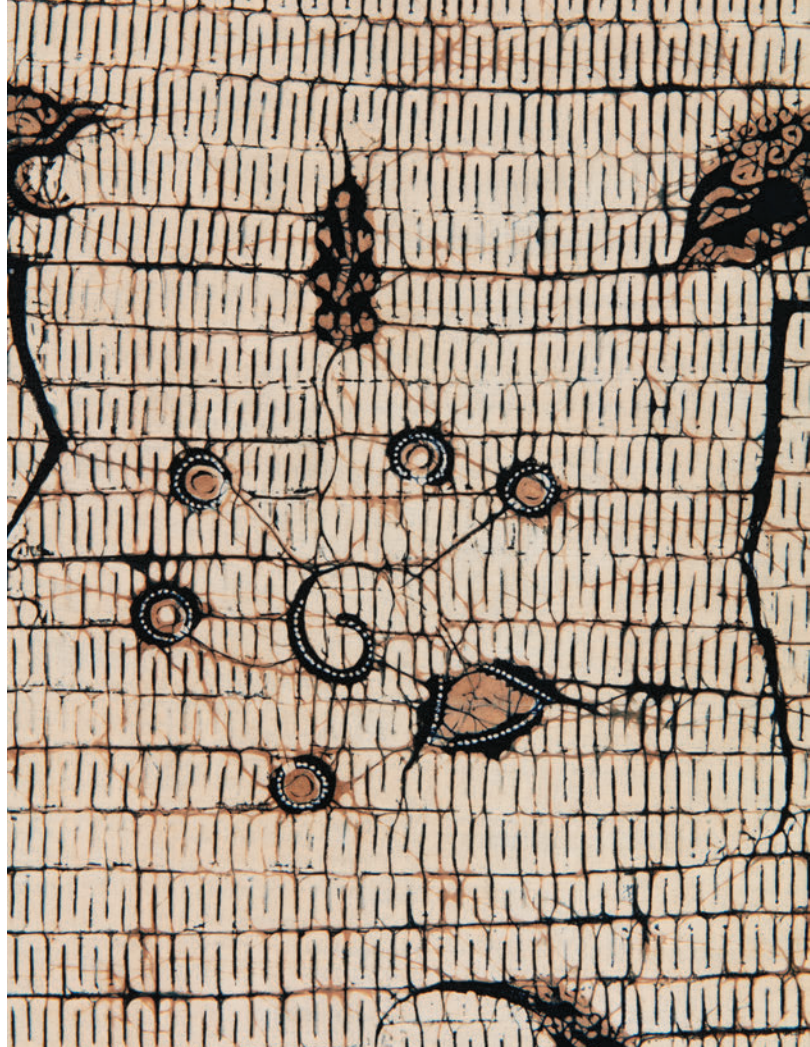
CTFA74066-MW463 (above and opposite in Brick Ashlar Installation)  
24" (w) X 24" (l) Tile, PDI  
FA73347-MW463  
12' (w) X 12' (l) Broadloom, PDI





Spirit Moderne Collection

PATTERN  
PERFECT  
BROADLOOM



Right, top:  
Skirt fragment, ca. mid-20th century, Java, Indonesia. Cotton batik. Museum of International Folk Art, bequest of Margretta S. Dietrich. A. 1961. 10.12

Right, bottom:  
Policarpio Valencia, embroidered textile, 20th century, New Mexico. Wool, cotton and cotton string. Museum of International Folk Art, bequest of Cady Wells. A.9.1954.28



D

DURKAN

10CP666U  
12' (w) X 11' (l)  
Pattern Perfect Broadloom



12PM641D  
3' (w) X 6' (l)  
Broadloom





Spirit Moderne is featured in Definity, Durkan's exclusive manufacturing technology which surpasses traditional luxury carpet by offering multi-level textures, more than twice the definition, superior performance and unmatched sustainability. The collection is also offered in Durkan's Synthesis, Pattern Perfect, PDI carpet tile and tufted broadloom.

Please contact your rep or visit [www.durkan.com](http://www.durkan.com) for more information.

MODER SLT0004010



**DURKAN. IMAGINE THAT.**  
508 East Morris Street, Dalton, GA 30721  
(800) 241-4580 | [Durkan.com](http://Durkan.com)

A division of  Mohawk Group

DEFINITY | SYNTHESIS | PDI | CVP | TUFTED | CARPET TILE  
ERT | RUBBER | SHEET | LAMINATE | HARDWOOD | RUGS

