



002  
Serenique



The background of the entire page is a close-up photograph of a white, ornate architectural scrollwork design. The design features intricate, swirling patterns with multiple layers of curves and ridges, creating a sense of depth and texture. The lighting is soft, highlighting the contours of the scrollwork.

# Serenique

---

volume 002

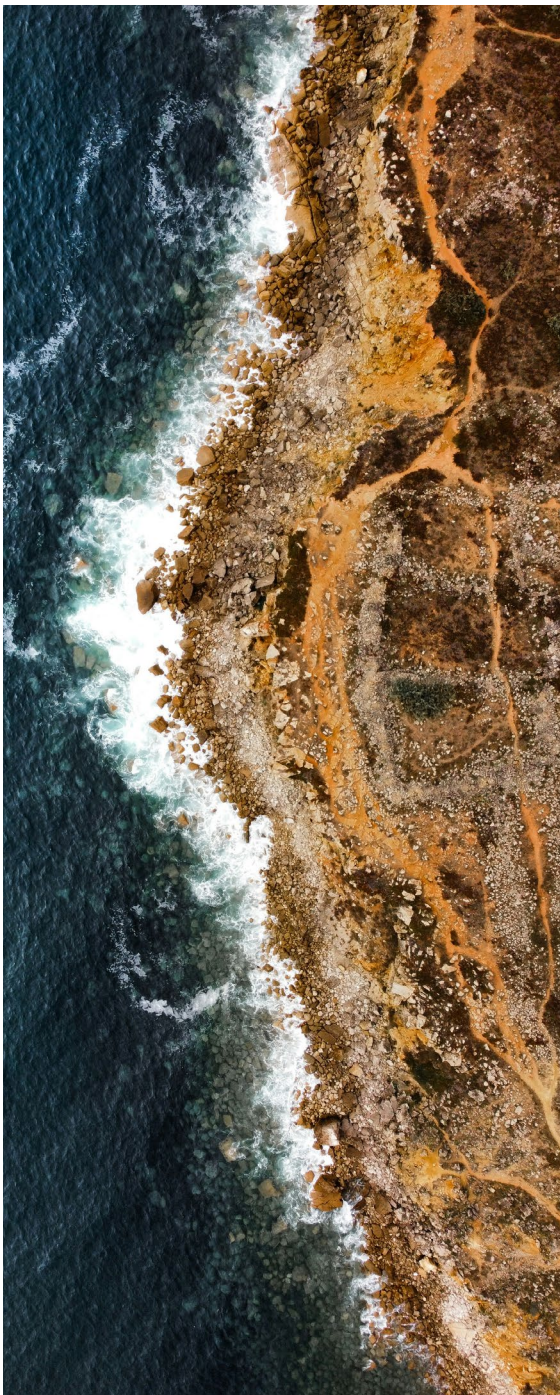




Introducing Serenique by Mohawk Group:  
a sophisticated collection of coordinating  
flooring products designed to effortlessly  
compose complete senior living  
communities, supporting wellness and an  
active lifestyle.

Easily blended, high performance flooring  
for senior living.





**Serenique 002** is meticulously crafted to elevate the ambiance of senior living communities with elegance and style. Designed with discerning tastes in mind, each carpet in this collection embodies timeless elegance and impeccable quality. From rich textures to refined patterns, every detail is thoughtfully curated to complement the upscale atmosphere of senior living spaces. **Serenique 002** offers a harmonious blend of classic aesthetics and contemporary sensibility, ensuring that residents can enjoy both comfort and luxury in their surroundings.





Reforestation 939  
Elemental Edges 073

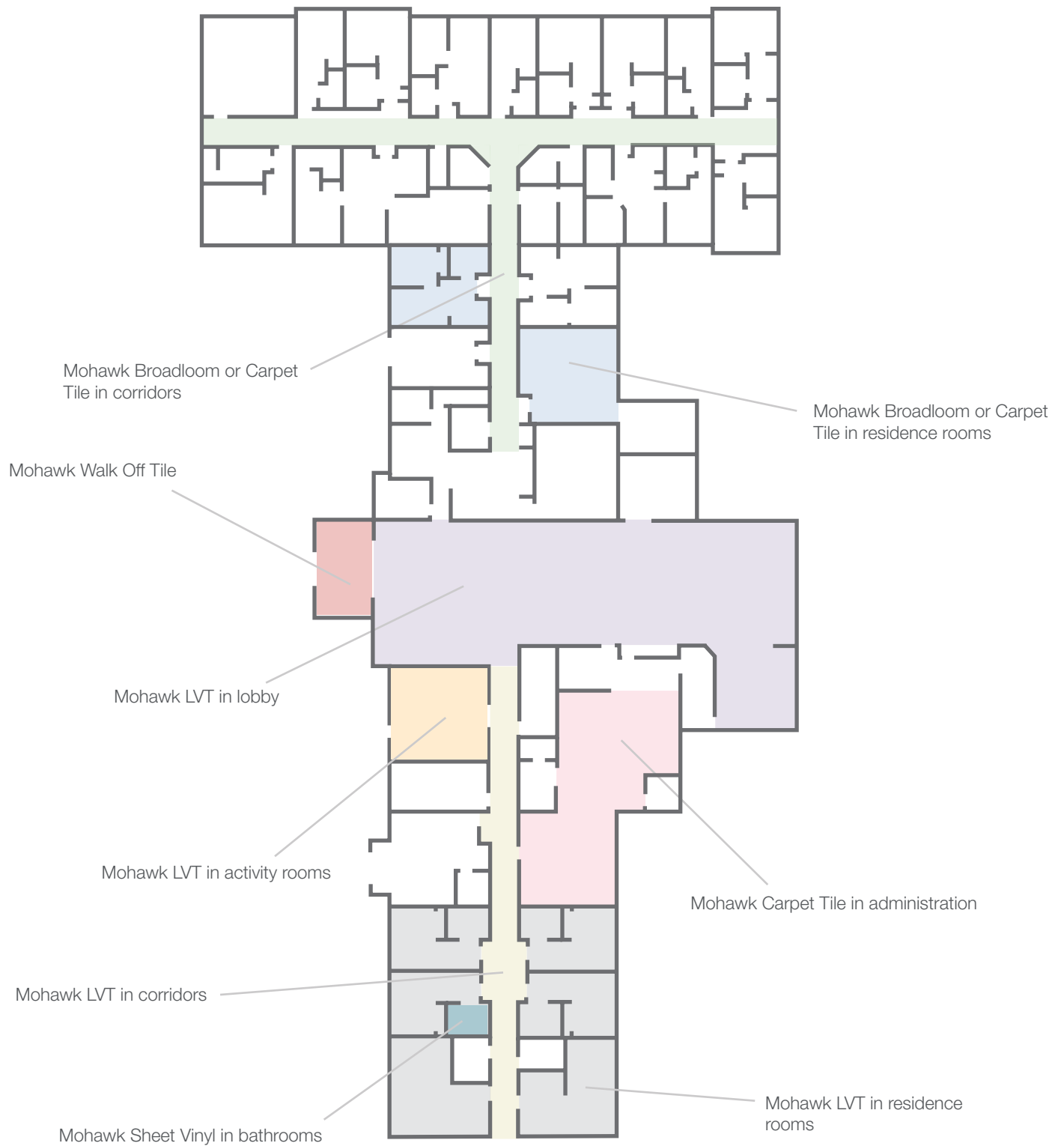




Choose from a broad array of hard and soft surface flooring to meet unique needs of every senior living space. All products are designed to work together and all from one trusted provider.

Administration	Tufted Broadloom or Carpet Tile
Dining	Broadloom, Carpet Tile or LVT
Corridor	Broadloom, Carpet Tile or LVT
Residence Room	Broadloom, Carpet Tile or LVT
Living	LVT or Broadloom (Definity CYP, PDI or Pattern Perfect)
Bath	LVT, HVT or Sheet Vinyl
Library	Broadloom or Carpet Tile
Theater	Broadloom or Carpet Tile
Activity Room	LVT or Resilient Sheet
Salon	LVT or HVT
Memory Care Resident Room	LVT, Resilient Sheet or Broadloom with Moisture Barrier Backing
Memory Care Corridors	Carpet Tile, LVT or Broadloom with Moisture Barrier Backing
Lobby	LVT or Broadloom (Definity CYP, PDI or Pattern Perfect)









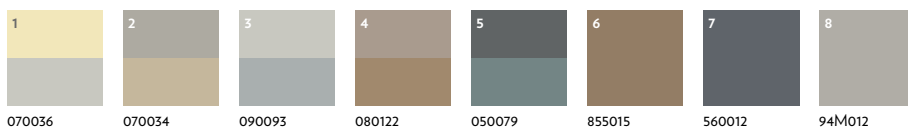




**QT104409**

6'-0" (w) x 6'-0" (l)

Definity, Broadloom



Customize in Personal Studio





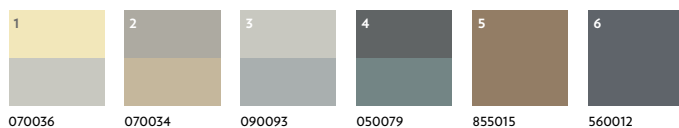




**UT103232**

6'-0" (w) x 4'-2" (l)

CYP, Broadloom

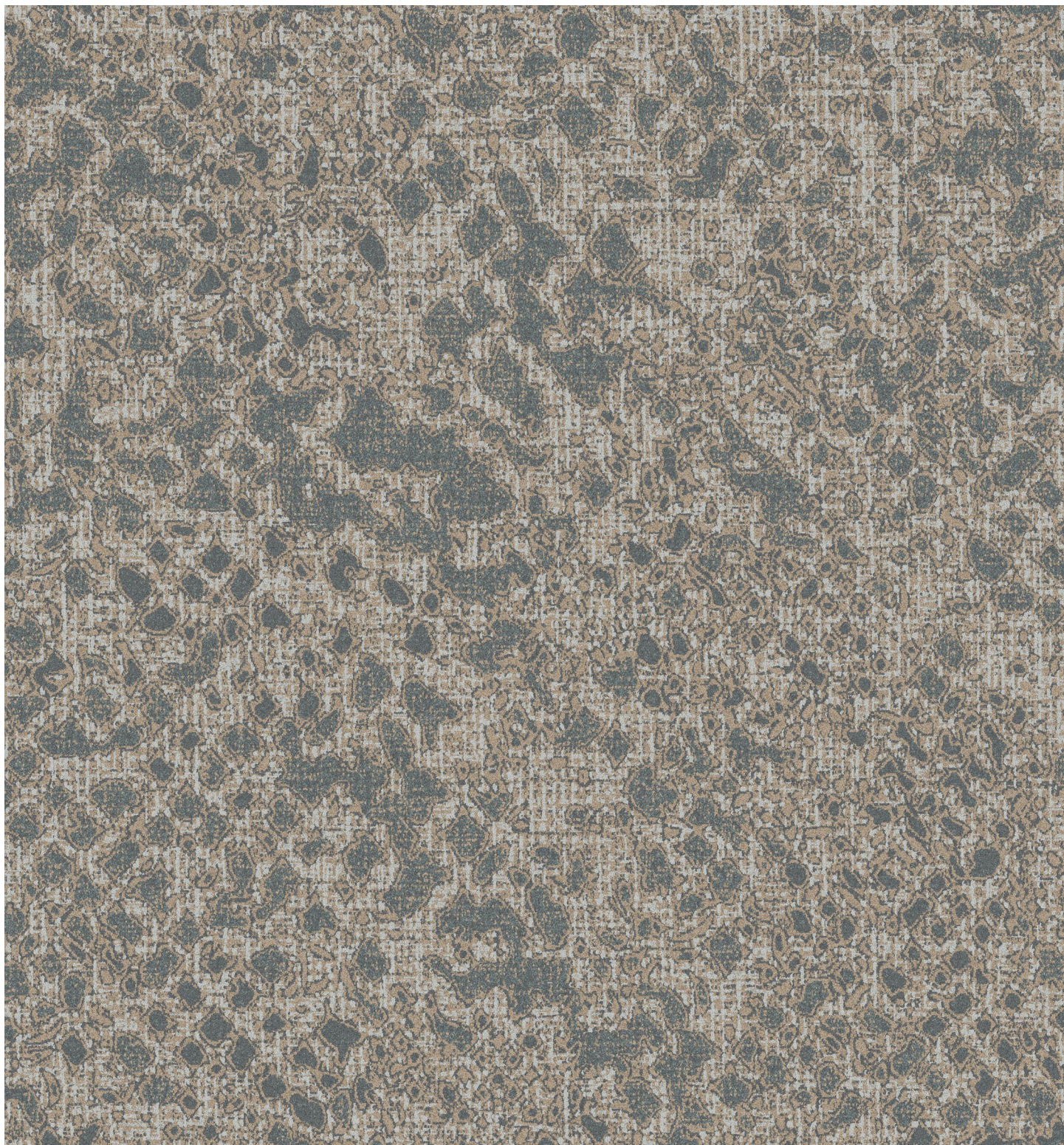


Customize in Personal Studio





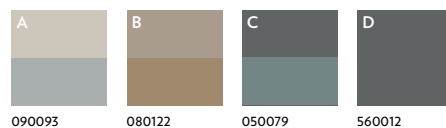




## 12CBCX55

6'-0" (w) x 6'-3" (l)

Pattern Perfect, Broadloom



Customize in Personal Studio





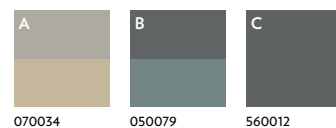




## 12BCY67

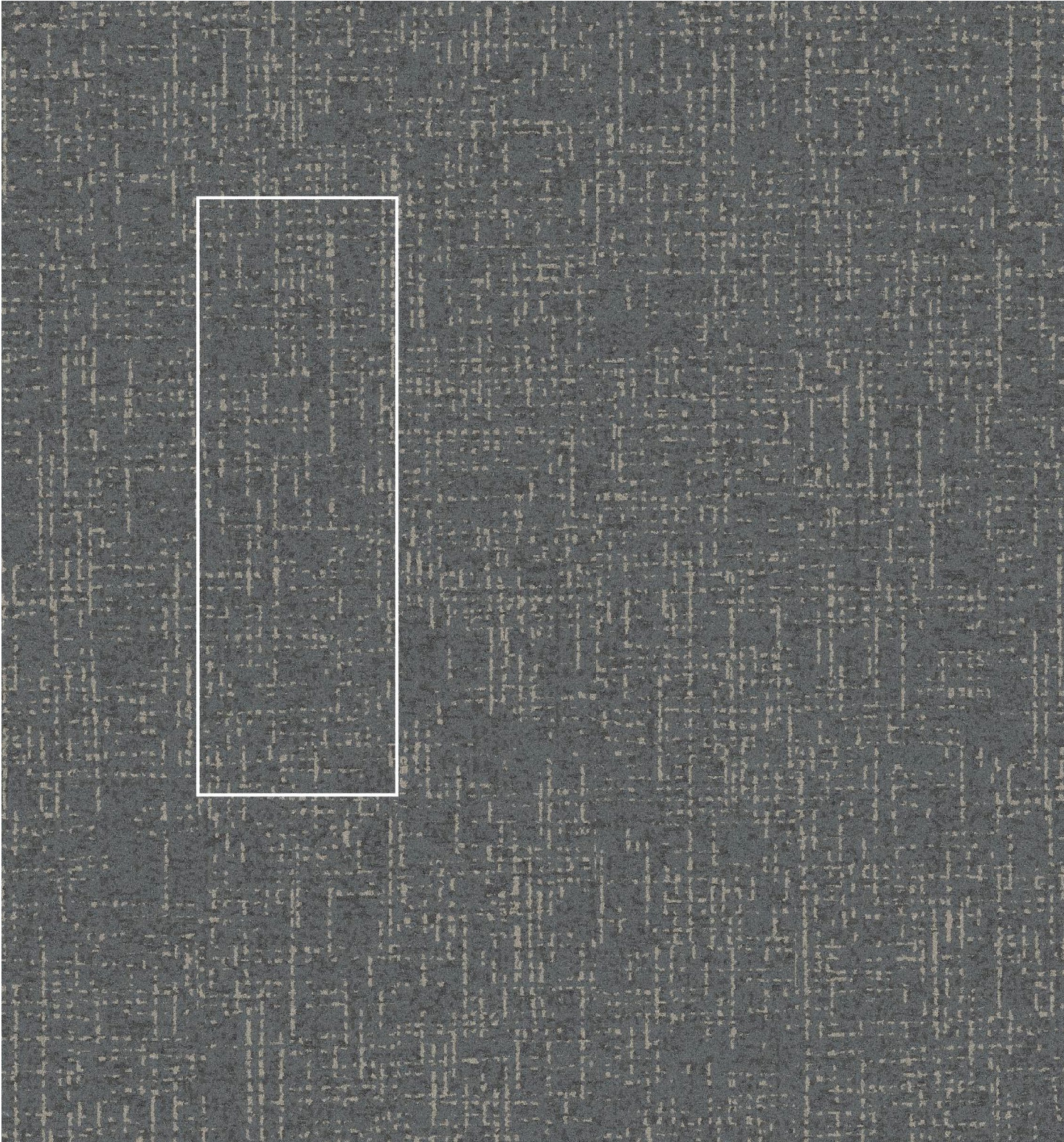
6'-0" (w) x 6'-3" (l)

Pattern Perfect, Broadloom

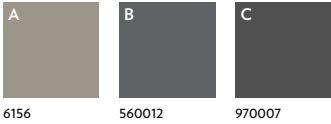


Customize in Personal Studio

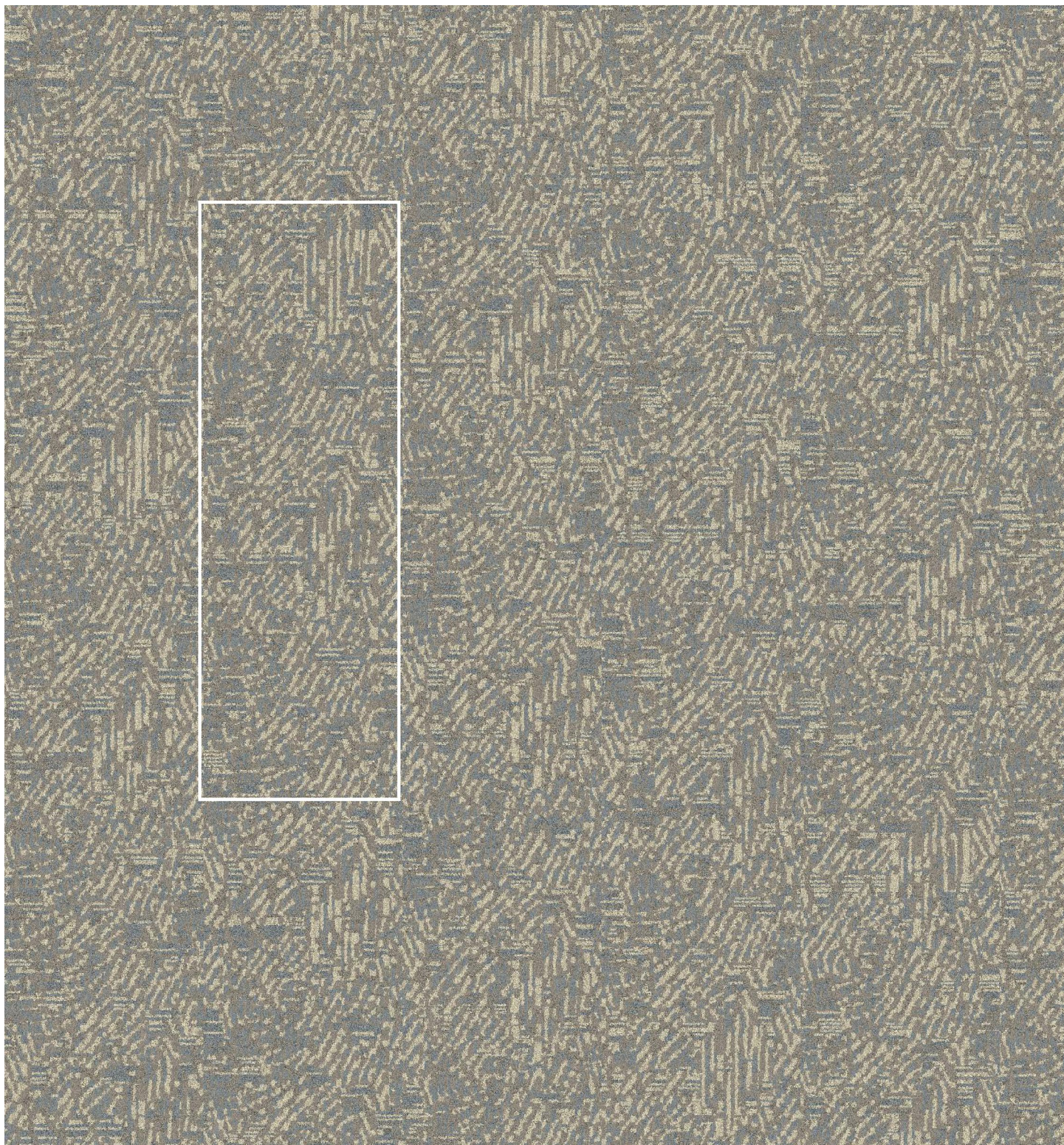




**12CMCU32**  
1'-0" (w) x 3'-0" (l)  
Pattern Perfect Plank



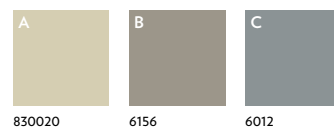




## 12CMCU33

1'-0" (w) x 3'-0" (l)

Pattern Perfect Plank



Customize in Personal Studio





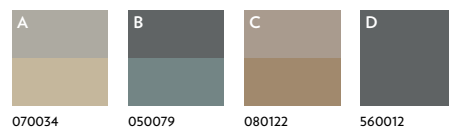




**12BCU31**

6'-0" (w) x 6'-3" (l)

Pattern Perfect, Broadloom



Customize in Personal Studio





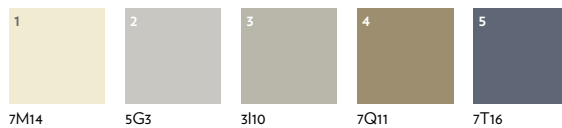




# D103229

3'-0" (w) x 3'-0" (l)

PDI Broadloom



Customize in Personal Studio









# CT103230

24" (w) x 24" (l)

PDI Tile



7M14



5G3



7Q11



3I10



7P14



2E5



7S14



7T16



Customize in Personal Studio





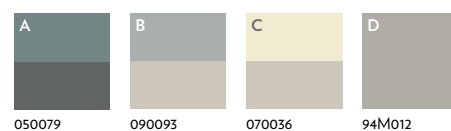




## Broad Brush – URSH 525

Art Alliance Collection

Pattern Perfect Broadloom



Customize in Personal Studio









**Quarto Ponte SLC53 – 810 Distant Thunder**  
Residence Collection

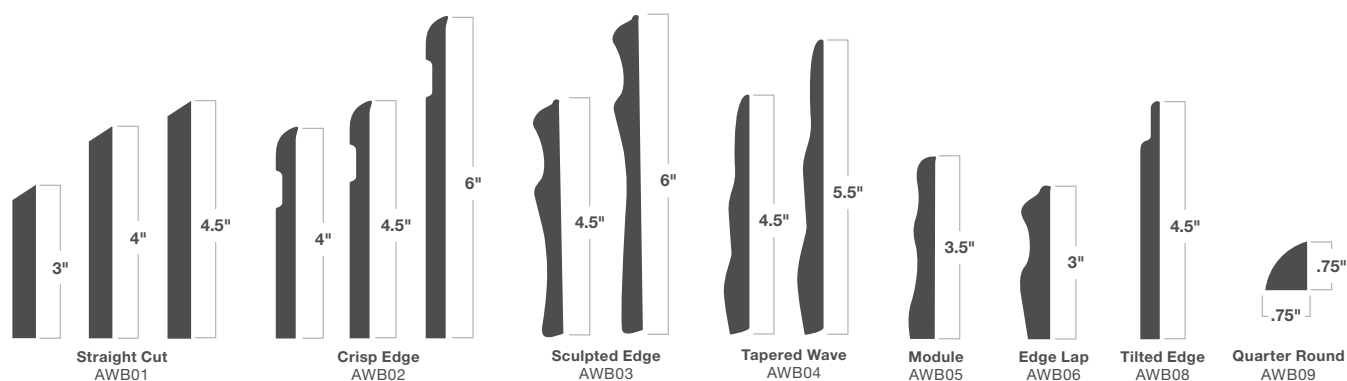




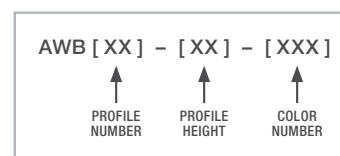


# Elemental Edges | Architectural Base

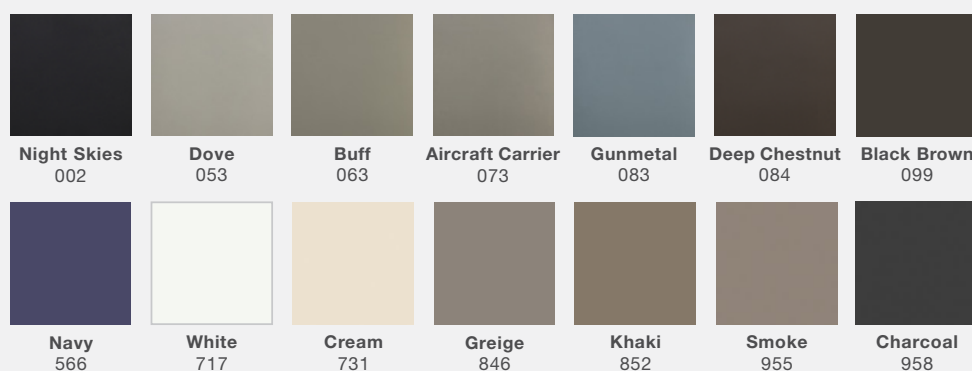
Elemental Edges Architectural Wall Base is an easy-to-order, sustainable solution to traditional millwork. The wide variety of design options, sizes, and running line colors allow you to easily coordinate your project finishes with your Mohawk Group flooring selections.



## HOW TO ORDER



## RUNNING LINE COLORS MADE TO ORDER | Minimum Order Quantity Required



ADDITIONAL COLORS AVAILABLE | Minimum Order Quantities Required





# Mohawk Group

*Personal Studio™*

Introducing Personal Studio (p.s.), our innovative design personalization tool that allows you to put your own flair to our running line products, so you can make designs as unique as your project.

p.s. was developed to provide you with a tool that will allow you to streamline your efforts and respond quickly.

## **Visualize In A Room**

You can personalize the color in any design from our selection of soft surface products, visualize it in a room scene, and order digital, print or physical samples easily.

## **Photorealistic Simulations**

Personal Studio uses photorealistic simulations of the cut and loop textures of our PDI Synthesis bases and our CYP, Definity and tufted constructions so your designs are very close to the final product.

## **Find The Perfect Color**

You can quickly iterate through multiple colorways and patterns to find the perfect fit for your project.

## **Multiple Projects**

Save your favorite personalized products per project, and easily switch between them in an easy interface.





Get to know p.s. by visiting  
<https://ps.mohawkgroup.com/>



# QT104409

[RETURN TO PRODUCTS >](#)

 Save To Cart

 Save To Your Favorites

Recolor

Rooms

Select Pattern Area to Recolor



Linen/Alabaster  
070036



Eggshell/Chalk Dust  
070034



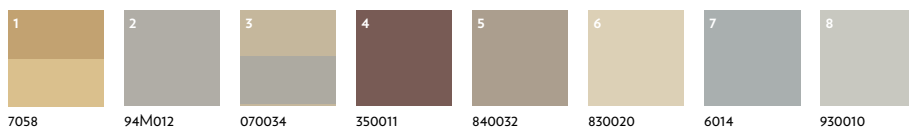
Sterling  
Gray/Alabaster  
090093



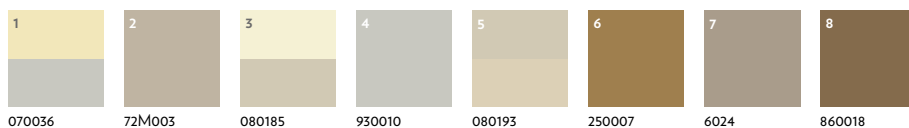




**QT104409**  
Colorway 1



**QT104409**  
Colorway 2

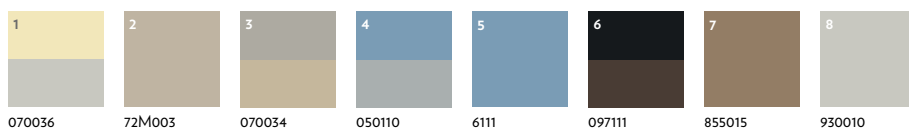


Customize in Personal Studio

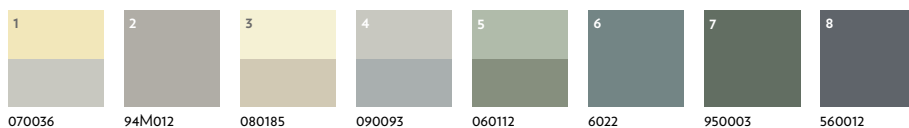




**QT104409**  
Colorway 3



**QT104409**  
Colorway 4









# Sustainability

Mohawk Group is proud to provide products free of Red List chemicals with verified documentation of their impact throughout the life cycle.



With the holistic improvement of the life cycle of our flooring products-- from full product transparency, to reduced water usage in manufacturing, to carbon neutrality and beyond- better is just the beginning.



Our products are made to last, created with fiber and backing technologies that target durability and lasting quality. We create products with circularity in mind: when your flooring is ready to be replaced, we will recycle it through our ReCover program.





Mohawk Group

Mohawk Group  
160 South Industrial Blvd.  
Calhoun, GA. 30701  
800.554.6637  
[mohawkgroup.com](http://mohawkgroup.com)

