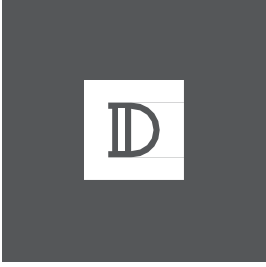
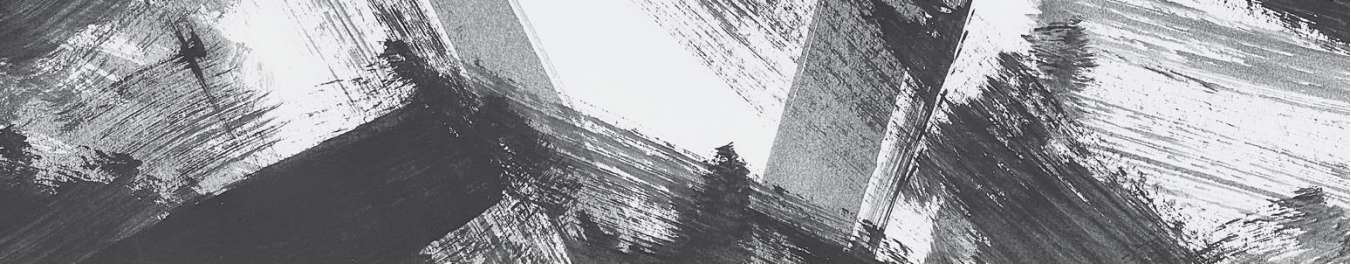


**DURKAN**  
Mohawk Group Hospitality



## Formula Blue 2.0

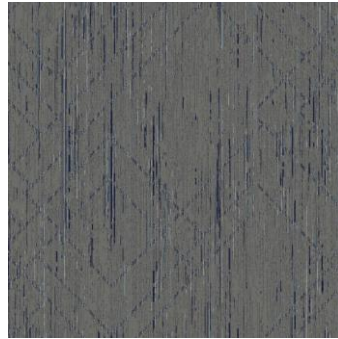
At Durkan, your vision is our blueprint. Explore Holiday Inn Express-approved prototypes to select flooring for your property and let us help turn your vision into reality.





**GUESTROOM**

Product: HIE52  
IHG Spec: EXG2-CPT01.1  
Product Type : Broadloom  
Fiber: 100% Solution Dyed Nylon  
Repeat: 72" X 186.4"  
Width: 13' 6"  
Backing: Weldbk



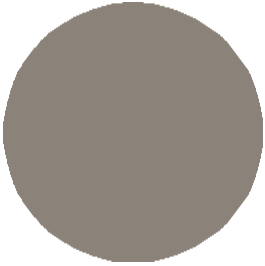
**GUESTROOM**

Product: HIE51  
IHG Spec: EXG2-CPT02.1  
Product Type : Carpet Tile  
Fiber: 100% Solution Dyed Nylon  
Tile Size: 24" X 24"  
Backing : Ecoflex NXT Air  
Installation: 1/3 Offset, Brick Ashlar



**ELEVATOR CAB | LVT**

Product: HIE54  
IHG Spec: EXG2-VF01  
Product Type: Glue Down LVT  
Overall Thickness: 4.5mm  
Wear Layer: 20 mil  
Size: 6" X 48"  
Installation: Brick Ashlar



**ARCHITECTURAL BASE**

Product: HIE68  
IHG Spec: EXG2-B02.1  
Product Type: Vinyl  
Height: 4.5" H

Reference HIE66 for color only sample

**CARPET PAD**

Product: IHG10  
IHG Spec: EXG2-CPT03.1



**GUESTROOM**

Product: HIE80  
IHG Spec: EXG2-CPT5.1  
Product Type : Broadloom  
Fiber: 100% Solution Dyed Nylon  
Repeat: 72" X 186.4"  
Width: 13' 6"  
Backing: Weldbck



**GUESTROOM**

Product: HIE81  
IHG Spec: EXG2-CPT52.1  
Product Type : Carpet Tile  
Fiber: 100% Solution Dyed Nylon  
Tile Size: 24" X 24"  
Backing : Ecoflex NXT Air  
Installation: 1/3 Offset, Brick Ashlar



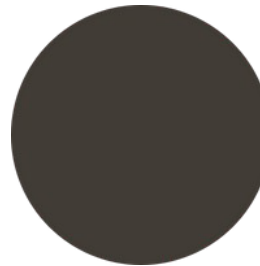
**ARCHITECTURAL BASE**

Product: HIE83  
IHG Spec: EXG2-B51.1  
Product Type: Vinyl  
Height: 4.5' H



**ARCHITECTURAL BASE**

Product: HIE82  
IHG Spec: EXG2-B52.1  
Product Type: Carpet  
Height: 4" H



**ARCHITECTURAL BASE**

Product: HIE84  
IHG Spec: EXG2-B51.1 Alt  
Product Type: Vinyl  
Height: 4.5" H



**LOBBY | FRONT DESK | BUSINESS CTR.**

Product: HIE49  
IHG Spec: EXP2-CPT01.1  
Product Type : Broadloom Inset Rugs  
Fiber: 100% Solution Dyed Nylon  
Repeat: 144" X 115.3"  
Width: 12'  
Backing: Weldlok Air – Attached Cushion



**FLEX | MEETING ROOM**

Product: HIE48  
IHG Spec: EXP2-CPT02.1  
Product Type : Broadloom  
Fiber: 100% Solution Dyed Nylon  
Repeat: 144" X 114"  
Width: 12'  
Backing: Wedlok Air – Cushion Attached



**INSTALLATION**

Broadbom full width



**CORRIDOR**

Product: HIE46  
 IHG Spec: EXP2-CPT04.1  
 Product Type : Broadloom  
 Fiber: 100% Solution Dyed Nylon  
 Repeat: 72" X 144.3"  
 Width: 12'  
 Backing: Weldlok Air – Attached Cushion

**ELEVATOR LOBBY**

Product: HIE46  
 IHG Spec: EXP2-CPT06.1  
 Product Type : Broadloom  
 Fiber: 100% Solution Dyed Nylon  
 Repeat: 72" X 144.3"  
 Width: 12'  
 Backing: Weldlok Air – Attached Cushion

**CORRIDOR | ELEVATOR LOBBY**

Product: HIE74  
 Width: 15' Alternate  
 Backing: Weldlok Air – Attached Cushion



**CORRIDOR DOOR FILL**

Product: HIE47  
 IHG Spec: EXP2-CPT05.1  
 Product Type : Broadloom  
 Fiber: 100% Solution Dyed Nylon  
 Repeat: 36" X 33.4"  
 Width: 12'  
 Backing: Weldlok Air – Attached Cushion



**LOBBY | FRONT DESK | BUSINESS CTR.**

Product: HIE62  
IHG Spec: EXP2-CPT07.1  
Product Type : Carpet Tile  
Fiber: 100% Solution Dyed Nylon  
Tile Size: 24" X 24"  
Backing : Ecoflex NXT Air  
Installation: 1/3 Offset, Brick Ashlar



**FLEX | MEETING ROOM**

Product: HIE63  
IHG Spec: EXP2-CPT08.1  
Product Type : Carpet Tile  
Fiber: 100% Solution Dyed Nylon  
Tile Size: 24" X 24"  
Backing : Ecoflex NXT Air  
Installation: 1/3 Offset, Brick Ashlar



**INSTALLATION INSPIRATION**

Tile with 1/3 offset install



**CORRIDOR**

Product: HIE64  
 IHG Spec: EXP2-CPT09.1  
 Product Type : Carpet Tile  
 Fiber: 100% Solution Dyed Nylon  
 Tile Size: 24" X 24"  
 Backing : Ecoflex NXT Air  
 Installation: 1/3 Offset, Brick Ashlar

**ELEVATOR LOBBY**

Product: HIE64  
 IHG Spec: EXP2-CPT11.1  
 Product Type : Carpet Tile  
 Fiber: 100% Solution Dyed Nylon  
 Tile Size: 24" X 24"  
 Backing : Ecoflex NXT Air  
 Installation: 1/3 Offset, Brick Ashlar



**CORRIDOR DOOR FILL**

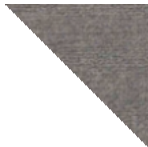
Product: HIE50  
 IHG Spec: EXP2-CPT10.1  
 Product Type : Carpet Tile  
 Fiber: 100% Solution Dyed Nylon  
 Tile Size: 24" X 24"  
 Backing : Ecoflex NXT Air  
 Installation: 1/3 Offset, Brick Ashlar



**ARCHITECTURAL BASE | CORRIDOR**

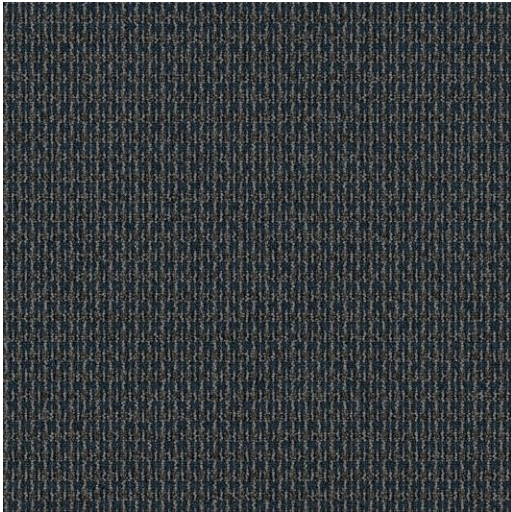
Product: HIE57  
IHG Spec: EXP2-B01.1  
Product Type: Vinyl  
Height: 4.5" H

Reference HIE66 for color only sample



**BOUND COVE BASE | CORRIDOR | ELEVATOR LOBBY**

Product: HIE60  
IHG Spec: EXP2-B05.1  
Product Type: Broadloom  
Height: 6" H  
Backing: Covebase

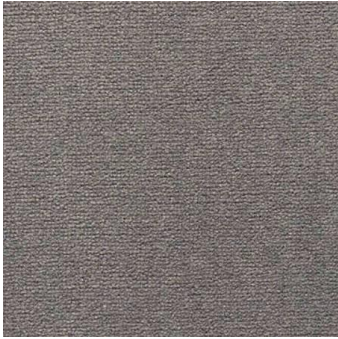


**HEART OF HOUSE | STAIRWELLS**

Product: HIE61  
IHG Spec: EXP2-CPT03.1  
Product Type : Broadloom  
Fiber: 100% Solution Dyed Nylon  
Repeat: 0.6" X 0.8"  
Width: 12'  
Backing: Weldbk

**HEART OF HOUSE | CARPET PAD**

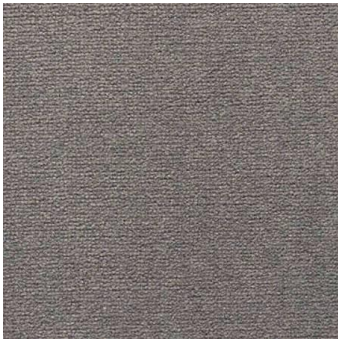
Product: IHG10  
IHG Spec: EXG2-CPT03.1



**STAIR STRINGER**

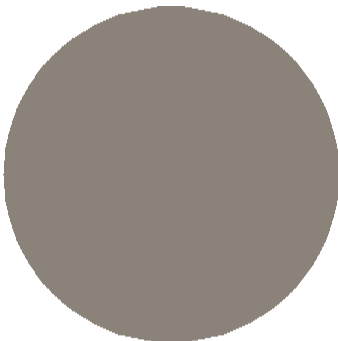
Product: HIE71  
IHG Spec: EXP2-B05.1  
Product Type: Broadloom  
Height: 12" H  
Backing: Weldbk

Reference HIE70 for sample



**BOUND BASE | STAIR LANDING | HEART OF HOUSE**

Product: HIE70  
IHG Spec: EXP2-B05.1  
Product Type: Bound Broadloom  
Height: 4" H  
Backing: Covebase



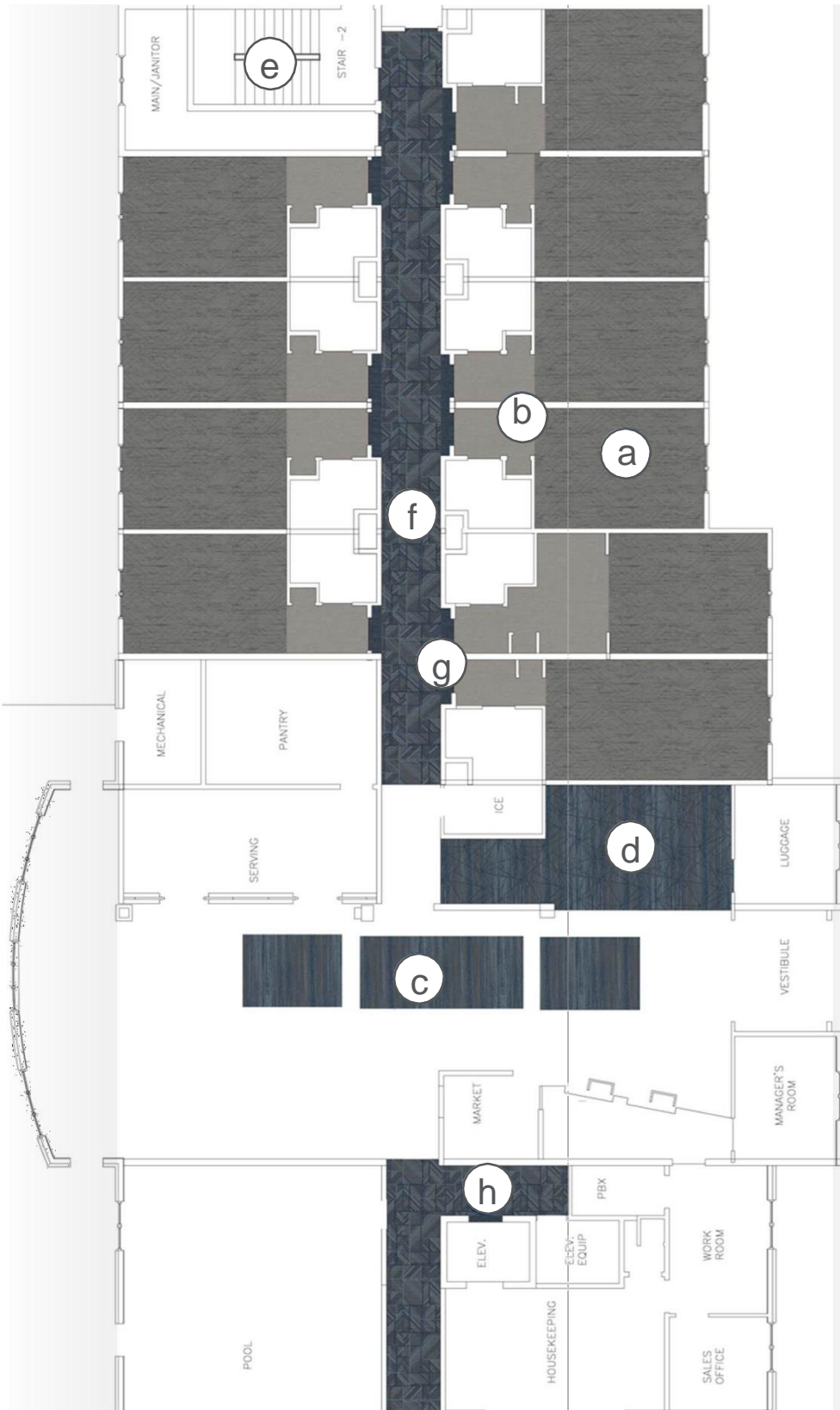
**COVE WALL BASE | FITNESS CENTER**

Product: HIE67  
IHG Spec: EXP2-B03.1  
Product Type: Rubber  
Height: 6" H

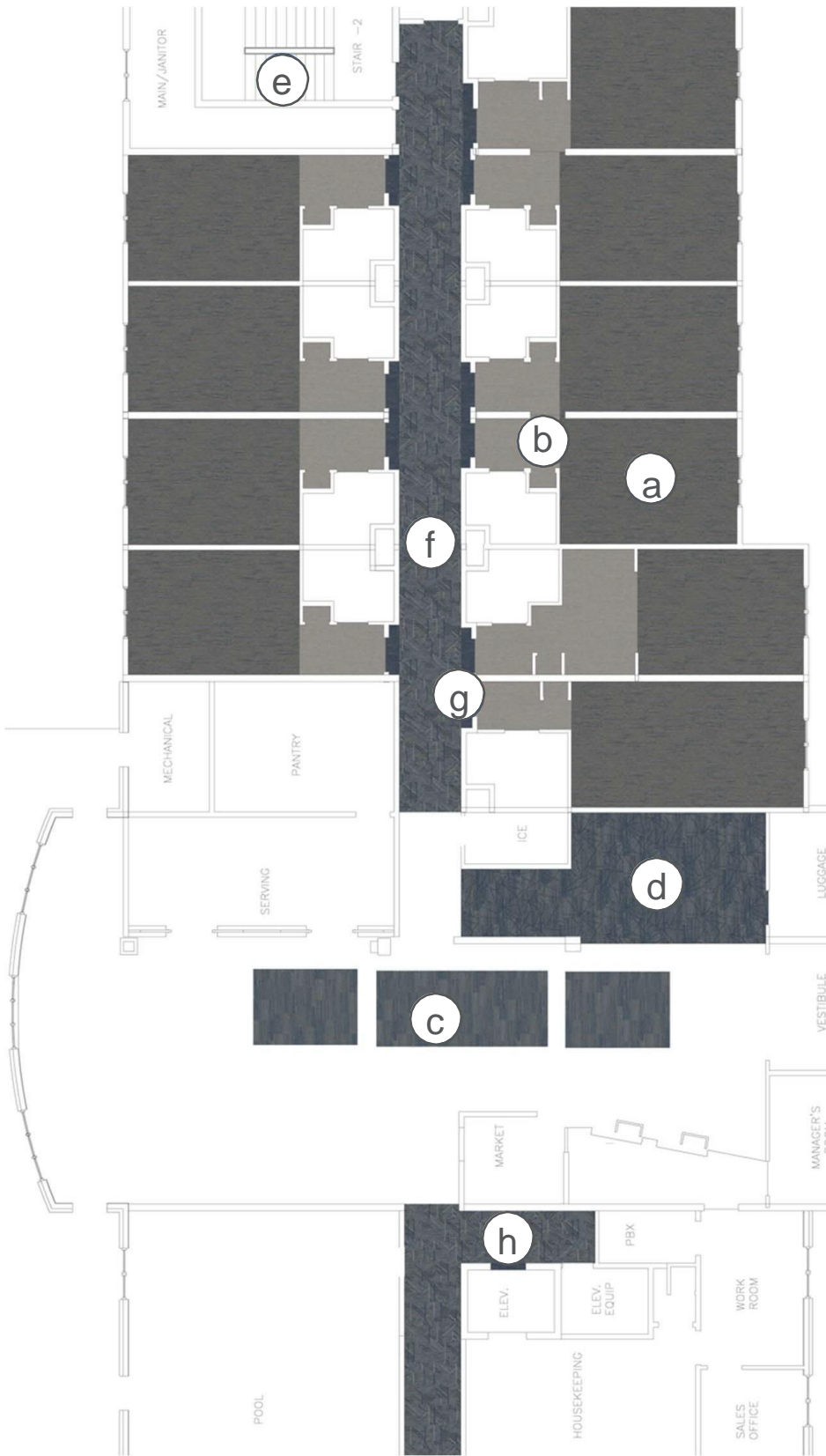
Reference HIE66 for color only sample

GUESTROOM & CORRIDOR FLOOR PLAN





- a** **GUESTROOM**  
 Product: HIE52  
 IHG Spec: EXG2-CPT01.1
- b** **LVT ENTRY**  
 Product: HIE54  
 IHG Spec: EXG2-LF01.1
- c** **LOBBY**  
 Product: HIE49  
 IHG Spec: EXP2-CPT01.1
- d** **MEETING FLEX**  
 Product: HIE48  
 IHG Spec: EXP2-CPT02.1
- e** **BOH & STAIRS**  
 Product: HIE61  
 IHG Spec: EXP2-CPT03.1
- f** **CORRIDOR**  
 Product: HIE46  
 IHG Spec: EXP2-CPT04.1
- g** **DOOR DROP FILL**  
 Product: HIE47  
 IHG Spec: EXP2-CPT05.1
- h** **ELEVATOR LOBBY**  
 Product: HIE46  
 IHG Spec: EXP2-CPT06.1



**a** **GUESTROOM**  
 Product: HIE51  
 IHG Spec: EXG2-CPT02.1

**b** **LVT ENTRY**  
 Product: HIE54  
 IHG Spec: EXG2-LF01.1

**c** **LOBBY**  
 Product: HIE62  
 IHG Spec: EXP2-CPT07.1

**d** **MEETING FLEX**  
 Product: HIE63  
 IHG Spec: EXP2-CPT08.1

**e** **BOH & STAIRS**  
 Product: HIE61  
 IHG Spec: EXP2-CPT03.1

**f** **CORRIDOR**  
 Product: HIE64  
 IHG Spec: EXP2-CPT09.1

**g** **DOOR DROP FILL**  
 Product: HIE50  
 IHG Spec: EXP2-CPT10.1

**h** **ELEVATOR LOBBY**  
 Product: HIE64  
 IHG Spec: EXP2-CPT011.1

Our partnerships and product certifications are transforming the marketplace with health and wellness in mind. We design hard and soft surface flooring to meet the highest standard of green building certification programs around the world – like our more than **500 Red List Free products**. That's why we believe living well starts from the ground up.

All Mohawk Group floor covering products including our carpet tile, broadloom, woven, LVT, and other resilient surfaces are going Beyond Carbon Neutral, meaning an additional 5% carbon offset beyond neutral, for a net-positive impact on the environment.



Learn More

## INITIATIVES



## CERTIFICATIONS



MINDCLICK

Believe in Better™



---

**DURKAN.** IMAGINE THAT.

Headquarter Rep: Dawn Morris | Mobile: 404.376.4031 | [Dawn\\_Morris@mohawkind.com](mailto:Dawn_Morris@mohawkind.com)  
508 E. Morris Street, Dalton, GA 30721 | 800.241.4580 | Durkan.com | A division of the Mohawk Group