





colorSTRAND® SD NYLON

PERFORMANCE & DESIGN

- Wide variety of colors for excellent design flexibility
- Unsurpassed colorfastness to light and to atmospheric contaminants
- Excellent durability and longevity of color
- Resistant to harsh cleaning agents
- Mohawk Protection Plus Soil & Stain Resistant Technology

SUSTAINABILITY

- CRI Green Label Plus® certified

WARRANTY

- Lifetime Limited Wear Warranty
- Lifetime Static Warranty
- Lifetime Limited Colorfastness To Light Warranty
- 10 Year Limited Colorfastness To Atmospheric Contaminants Warranty
- 10 Year Limited Stain Resistance Warranty

Specifications

BROADLOOM	Brand	Aladdin Commercial
	Style Name / Number	Scholarship II / 2B99
	Construction	Tufted
	Surface Appearance.....	Textured Heathered Loop
	Gauge	1/10" (39.37 rows per 10 cm)
	Tufted Weight	20 oz/yd ² (678 g/m ²)
	Density	5,179
	Dye Method.....	100% Solution Dyed
	Fiber Type.....	ColorStrand® SD Nylon
	Stain Release Technology....	Mohawk Protection Plus Stain
	Soil Release Technology	Mohawk Protection Plus Soil
	Primary Backing	Woven Polypropylene
	Secondary Backing.....	Weldlok®
	Indoor Air Quality	Green Label Plus Certified # 8216
	NSF 140	Gold
	Width.....	12' (3.66 m)
	Pattern Repeat	None
	Flammability	ASTM E 648 Class 1 (Glue Down)
	Smoke Density.....	ASTM E 662 Less than 450
	Static Propensity	AATCC-134 Under 3.5 KV
	Warranties.....	Lifetime Limited Wear Warranty Lifetime Static Protection Warranty Lifetime Limited Colorfastness to Light Warranty 10 Year Limited Stain Resistance Warranty 10 Year Limited Colorfastness to Atmospheric Contaminants

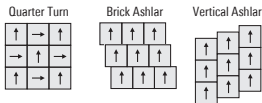
CARPET TILE	Brand	Aladdin Commercial
	Style Name / Number	Scholarship II Tile / 2B101
	Construction	Tufted
	Surface Appearance.....	Textured Heathered Loop
	Gauge	1/10" (39.37 rows per 10 cm)
	Density	5,890
	Dye Method.....	100% Solution Dyed
	Fiber Type.....	ColorStrand® SD Nylon
	Stain Release Technology....	Mohawk Protection Plus Stain
	Soil Release Technology	Mohawk Protection Plus Soil
	Primary Backing	Non Woven Synthetic
	Secondary Backing.....	UltraSet® Matrix
	Indoor Air Quality	Green Label Plus Certified # 1171
	NSF 140	Gold
	Size	24" x 24" (.6096 m x .6096 m)
	Yards Per Carton	8 sqyd/ctn
	Installation Method.....	Brick Ashlar / Vertical Ashlar / Quarter Turn
	Flammability	ASTM E 648 Class 1 (Glue Down)
	Smoke Density.....	ASTM E 662 Less than 450
	Static Propensity	AATCC-134 Under 3.5 KV
	Warranties.....	Lifetime Limited Wear Warranty Lifetime Static Protection Warranty Lifetime Limited Edge Ravel, Zippering, Delamination and Dimensional Stability Warranty Lifetime Limited Colorfastness to Light Warranty 10 Year Limited Stain Resistance Warranty 10 Year Limited Colorfastness to Atmospheric Contaminants

BROADLOOM	Brand	Aladdin Commercial
	Style Name / Number	Scholarship II 26 / 2B100
	Construction	Tufted
	Surface Appearance.....	Textured Heathered Loop
	Gauge	1/10" (39.37 rows per 10 cm)
	Tufted Weight	26 oz/yd ² (882 g/m ²)
	Density	7,037
	Dye Method.....	100% Solution Dyed
	Fiber Type.....	ColorStrand® SD Nylon
	Stain Release Technology....	Mohawk Protection Plus Stain
	Soil Release Technology	Mohawk Protection Plus Soil
	Primary Backing	Woven Polypropylene
	Secondary Backing.....	Weldlok® Plus
	Indoor Air Quality	Green Label Plus Certified # 3802
	NSF 140	Gold
	Width.....	12' (3.66 m)
	Pattern Repeat	None
	Flammability	ASTM E 648 Class 1 (Glue Down)
	Smoke Density.....	ASTM E 662 Less than 450
	Static Propensity	AATCC-134 Under 3.5 KV
	Warranties.....	Lifetime Limited Wear Warranty Lifetime Static Protection Warranty Lifetime Limited Colorfastness to Light Warranty 10 Year Limited Stain Resistance Warranty 10 Year Limited Colorfastness to Atmospheric Contaminants



Printed on FSC® certified paper

Installation Instructions:



Mohawk Industries, Inc. warrants its adhesives for the life of the original installation only when a Mohawk Industries style (product) is installed. Mohawk's floor preparation procedures must be followed to ensure that the substrate has been prepared properly. The use of Mohawk branded adhesives is required to ensure optimum results and are the only approved adhesives warranted by Mohawk. Please contact your local Sales Representative for installation guidelines.

These patterns contain inherent characteristics which may result in pattern run off and/or pattern appearance variations at the seams or tile edges (darker or lighter pattern lines). These characteristics are inherent in the patterns and are not manufacturing defects. Consideration to these characteristics should be given when selecting an installation method.

Chair pads are recommended under office chairs with roller casters to preserve appearance retention, act as a deterrent toward delamination and to prevent premature or accelerated wear.

Mohawk is providing this architect folder for the purpose of promoting our commercial business. Color may vary from dye lot to dye lot. Substitution of material may be made due to improved technology, supply limitations or other factors. The performance of this product is not affected by such variations. We recommend the use of chair pads on all commercial installations.

For current and complete specifications please call tech support at 888-387-9881 or visit www.AladdinCommercial.com I 800.233.4490

