

# Inspiration Collection

Enduring Function, Distinctive Appeal, Surface Purpose, Transversal Approach





Transversal Approach 521 Limitless Potential  
Cover: Surface Purpose 869 Vivid Vision

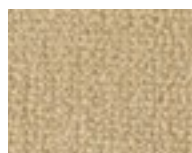






# Town Center II

Town Center II offers an array of beautiful colors from soft, warm neutrals to bold, vivid accents. Available in our Weldlok® broadloom backing system and is available in both a 30 oz. and 36 oz. weight.



128 Creme Pearl



148 Spice Box



152 Lemon Zest



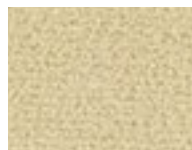
214 Wine Country



264 Dried Sage



278 Honey Glaze



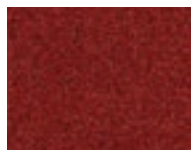
284 Ash Blonde



330 Safari Plains



373 Garnet Glaze



442 Sundried Tomato



450 Portabello Mushroom



473 Royal Robe



516 Caribbean



525 Aire



531 Heritage Slate



539 Fantasy Blue



546 Healing Aloe



548 Krypton Gray



555 Twilight Dawn



557 Shadow Mountain



569 Weathered Ocean



585 Harbor Waters



593 Powder Indigo



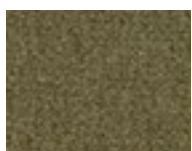
615 Cool Wave



616 Silver Mist



617 Winter Sea



619 Organic Herb



620 Saddle Brown



622 Navy Pier



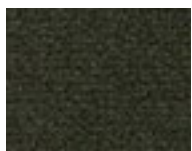
646 Planet Green



664 Blue Jazmine



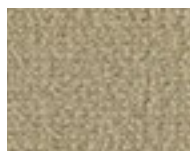
666 Gunmetal Steel



667 Botanical



681 Hunter Forest



727 Relaxed Khaki



729 Toast Bake



731 Gobi Beige



758 Suede Camel



775 Iron Cast



824 Exotic Coffee



825 Stoney Gray



851 Western Trail



876 Potting Soil



929 Liquid Silver



945 Rushing River



959 Wrought Iron



979 Jet Black



996 Earthen Jute



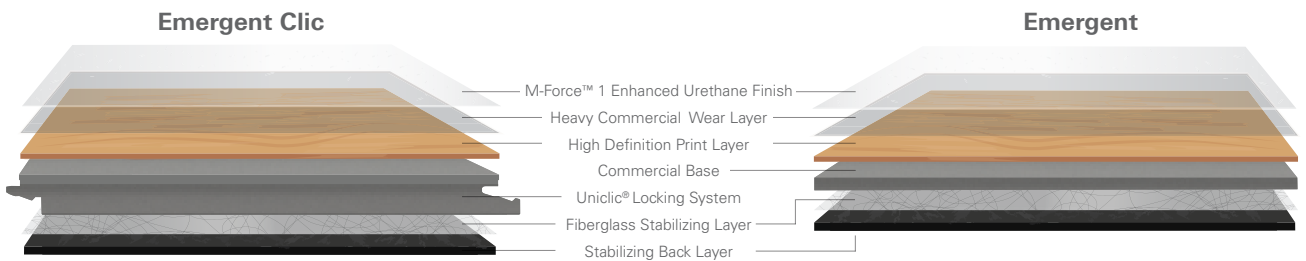
358 Split Rail

## Emergent Collection

Proudly manufactured in America, Emergent LVT celebrates the vibrant, versatile spirit of our local communities. Appealing natural wood visuals are designed to fit any interior, providing a core collection of LVT styles to use for a variety of projects.

### Features

- M-Force 1™ Enhanced Urethane finish and 20 mil wear layer protect against commercial traffic
- Wood textures emulate natural materials
- No polish maintenance reduces occupied costs
- Diverse color line spans from traditional to contemporary influences
- Designed to coordinate with a variety of Aladdin Commercial carpet collections
- 6" x 48" plank size
- Limited 10 Year Commercial Warranty
- Limited 25 Year Residential Warranty
- Made in America



Uniclic® is the premier locking system in the hard surface industry, reducing time and costs associated with installation of luxury vinyl tiles. Uniclic's special tongue and groove shape easily creates a tight connection between joints.



141 Flax Straw

142 Basketry

342 Burnished

358 Split Rail

363 Stone Brown

812 Antiquity



829 Mocha Accent

918 Abbey Stone

938 Canyon

949 Iron Gate

958 Garden Wall



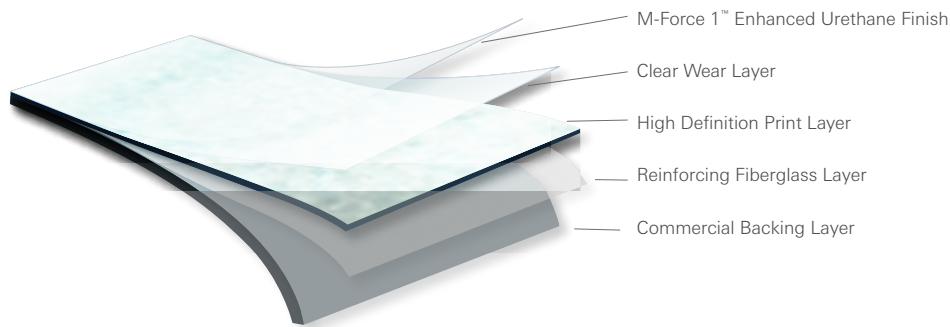
Face Time 848 Retreat, Stoney Strokes 774 Linen

## Visionary Collection

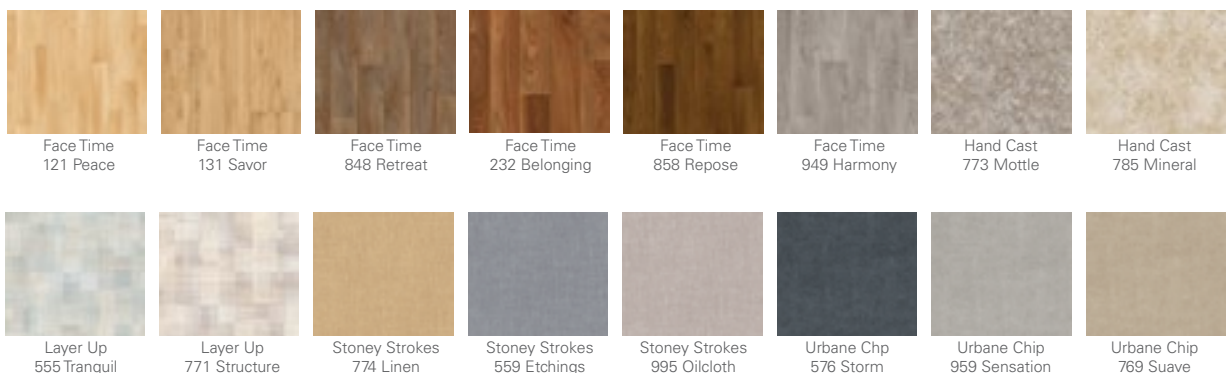
Visionary Collection resilient sheet flooring by Aladdin Commercial, features five soft, organic visuals that are textile-inspired along with natural wood grain looks that create a warm and comforting environment. Constructed for light commercial and residential spaces offering excellent performance and durability, including our M-Force 1™ Enhanced Urethane Finish for excellent wear and stain resistance, along with a no-polish option for lower maintenance costs.

### Features

- Heterogeneous Construction
- 6' & 12' widths
- 20 mil wear layer
- .080" (2mm) overall thickness
- M-Force 1™ Enhanced Urethane Finish
- Specification ASTM F-1303
- Seams can be cold welded or heat welded
- Install with M95.0 or MS160 Spray Adhesive
- FloorScore® Certified
- Limited 10 Year Light Commercial Warranty
- Limited 25 Year Residential Warranty



Visionary features a 20 mil commercial wear layer with M-Force 1™ Enhanced Urethane finish offering excellent wear and stain resistance and polish-optional for cost-effective maintenance.







# colorSTRAND® SD NYLON

## PERFORMANCE & DESIGN

- Wide variety of colors for excellent design flexibility
- Unsurpassed colorfastness to light and to atmospheric contaminants
- Excellent durability and longevity of color
- Resistant to harsh cleaning agents
- Mohawk Protection Plus Soil & Stain Resistant Technology

## SUSTAINABILITY

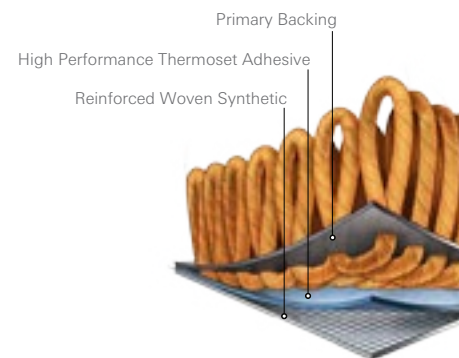
- Contains an average of 40% pre-consumer recycled content
- CRI Green Label Plus® certified

## WARRANTY

- Lifetime Limited Wear Warranty
- Lifetime Static Warranty
- Lifetime Limited Colorfastness To Light Warranty
- 10 Year Limited Colorfastness To Atmospheric Contaminants Warranty
- 10 Year Limited Stain Resistance Warranty

## Weldlok® Plus

Weldlok® Plus is an advanced high performance backing system designed to provide long term carpet durability while delivering sustainable benefits. The backing system utilizes a high performance thermoset adhesive designed to deliver greater dimensional stability and long term performance by encapsulating the carpet back stitch, and securing the secondary backing to the substrate. Weldlok® Plus contains a minimum of 31% pre-consumer recycle content by total product weight.



## PERFORMANCE

- High performance backing designed for demanding commercial environments
- Greater dimensional stability - no growing or shrinking
- High tuft bind properties
- Eliminates edge ravel and zippering

## INSTALLATION

- Direct glue or stretch in installations

## SUSTAINABILITY

- Minimum 31% pre-consumer recycled content by total product weight
- NSF / ANSI 140 Gold Certified
- CRI Green Label Plus Certified

## WARRANTY

- Lifetime Limited Tuft Bind, Edge Ravel, Zippering, Delamination and Dimensional Stability Warranty

# Specifications

<b>BROADLOOM</b>	Brand .....	<b>Aladdin Commercial</b>
	Collection .....	<b>Inspiration Collection</b>
	Style Name / Number .....	<b>Enduring Function / 2B77</b>
	Construction .....	Tufted
	Surface Appearance .....	Textured Patterned Loop
	Gauge .....	1/12" (47.00 rows per 10 cm)
	Tufted Weight .....	16 oz./yd (542 g/m <sup>2</sup> )
	Density .....	5,592
	Dye Method .....	100% Solution Dyed
	Fiber Type .....	Colorstrand® SD Nylon
	Stain Release Technology .....	Mohawk Protection Plus Stain
	Soil Release Technology .....	Mohawk Protection Plus Soil
	Primary Backing .....	Woven Polypropylene
	Secondary Backing .....	Weldlok® Plus
	Recycled Content .....	Contains 31% pre-consumer recycled content by total product weight
	Indoor Air Quality .....	Green Label Plus Certified # 3802
	NSF 140 .....	Gold
	Size .....	12' width (3.66 m)
	Pattern Repeat .....	18" W x 28.83" L
	Flammability .....	ASTM E 648 Class 1 (Glue Down)
Smoke Density .....	ASTM E 662 Less than 450	
Static Propensity .....	AATCC-134 Under 3.5 KV	
Warranties .....	Lifetime Limited Wear Warranty Lifetime Limited Edge Ravel, Zippering, Delamination and Dimensional Stability Warranty Lifetime Limited Static Protection Warranty Lifetime Limited Colorfastness to Light Warranty 10 Year Limited Stain Resistance Warranty 10 Year Limited Colorfastness to Atmospheric Contaminants	

<b>BROADLOOM</b>	Brand .....	<b>Aladdin Commercial</b>
	Collection .....	<b>Inspiration Collection</b>
	Style Name / Number .....	<b>Transversal Approach / 2B78</b>
	Construction .....	Tufted
	Surface Appearance .....	Textured Patterned Loop
	Gauge .....	1/12" (47.00 rows per 10 cm)
	Tufted Weight .....	16 oz./yd (542 g/m <sup>2</sup> )
	Density .....	4,881
	Dye Method .....	100% Solution Dyed
	Fiber Type .....	Colorstrand® SD Nylon
	Stain Release Technology .....	Mohawk Protection Plus Stain
	Soil Release Technology .....	Mohawk Protection Plus Soil
	Primary Backing .....	Woven Polypropylene
	Secondary Backing .....	Weldlok® Plus
	Recycled Content .....	Contains 31% pre-consumer recycled content by total product weight
	Indoor Air Quality .....	Green Label Plus Certified # 3802
	NSF 140 .....	Gold
	Size .....	12' width (3.66 m)
	Pattern Repeat .....	18" W x 17.75" L
	Flammability .....	ASTM E 648 Class 1 (Glue Down)
Smoke Density .....	ASTM E 662 Less than 450	
Static Propensity .....	AATCC-134 Under 3.5 KV	
Warranties .....	Lifetime Limited Wear Warranty Lifetime Limited Edge Ravel, Zippering, Delamination and Dimensional Stability Warranty Lifetime Limited Static Protection Warranty Lifetime Limited Colorfastness to Light Warranty 10 Year Limited Stain Resistance Warranty 10 Year Limited Colorfastness to Atmospheric Contaminants	

<b>BROADLOOM</b>	Brand .....	<b>Aladdin Commercial</b>
	Collection .....	<b>Inspiration Collection</b>
	Style Name / Number .....	<b>Surface Purpose / 2B75</b>
	Construction .....	Tufted
	Surface Appearance .....	Textured Patterned Loop
	Gauge .....	1/12" (47.00 rows per 10 cm)
	Tufted Weight .....	16 oz./yd (542 g/m <sup>2</sup> )
	Density .....	5,877
	Dye Method .....	100% Solution Dyed
	Fiber Type .....	Colorstrand® SD Nylon
	Stain Release Technology .....	Mohawk Protection Plus Stain
	Soil Release Technology .....	Mohawk Protection Plus Soil
	Primary Backing .....	Woven Polypropylene
	Secondary Backing .....	Weldlok® Plus
	Recycled Content .....	Contains 31% pre-consumer recycled content by total product weight
	Indoor Air Quality .....	Green Label Plus Certified # 3802
	NSF 140 .....	Gold
	Size .....	12' width (3.66 m)
	Pattern Repeat .....	18" W x 18.46" L
	Flammability .....	ASTM E 648 Class 1 (Glue Down)
Smoke Density .....	ASTM E 662 Less than 450	
Static Propensity .....	AATCC-134 Under 3.5 KV	
Warranties .....	Lifetime Limited Wear Warranty Lifetime Limited Edge Ravel, Zippering, Delamination and Dimensional Stability Warranty Lifetime Limited Static Protection Warranty Lifetime Limited Colorfastness to Light Warranty 10 Year Limited Stain Resistance Warranty 10 Year Limited Colorfastness to Atmospheric Contaminants	

<b>BROADLOOM</b>	Brand .....	<b>Aladdin Commercial</b>
	Collection .....	<b>Inspiration Collection</b>
	Style Name / Number .....	<b>Distinctive Appeal / 2B76</b>
	Construction .....	Tufted
	Surface Appearance .....	Textured Patterned Loop
	Gauge .....	1/12" (47.00 rows per 10 cm)
	Tufted Weight .....	16 oz./yd (542 g/m <sup>2</sup> )
	Density .....	7,111
	Dye Method .....	100% Solution Dyed
	Fiber Type .....	Colorstrand® SD Nylon
	Stain Release Technology .....	Mohawk Protection Plus Stain
	Soil Release Technology .....	Mohawk Protection Plus Soil
	Primary Backing .....	Woven Polypropylene
	Secondary Backing .....	Weldlok® Plus
	Recycled Content .....	Contains 31% pre-consumer recycled content by total product weight
	Indoor Air Quality .....	Green Label Plus Certified # 3802
	NSF 140 .....	Gold
	Size .....	12' width (3.66 m)
	Pattern Repeat .....	18" W x 27.05" L
	Flammability .....	ASTM E 648 Class 1 (Glue Down)
Smoke Density .....	ASTM E 662 Less than 450	
Static Propensity .....	AATCC-134 Under 3.5 KV	
Warranties .....	Lifetime Limited Wear Warranty Lifetime Limited Edge Ravel, Zippering, Delamination and Dimensional Stability Warranty Lifetime Limited Static Protection Warranty Lifetime Limited Colorfastness to Light Warranty 10 Year Limited Stain Resistance Warranty 10 Year Limited Colorfastness to Atmospheric Contaminants	

**Aladdin**<sup>™</sup>  
COMMERCIAL

Mohawk Industries, Inc. warrants its adhesives for the life of the original installation only when a Mohawk Industries style (product) is installed. Mohawk's floor preparation procedures must be followed to ensure that the substrate has been prepared properly. Failure to use Mohawk Industries adhesives or to follow Mohawk's floor preparation procedures will void all lifetime adhesive warranties. Please contact your local Sales Representative for installation guidelines.

Mohawk is providing this architect folder for the purpose of promoting our commercial business. Color may vary from dye lot to dye lot. Substitution of material may be made due to improved technology, supply limitations or other factors. The performance of this product is not affected by such variations. We recommend the use of chair pads on all commercial installations.

For current and complete specifications please call tech support at 888-387-9881 or visit [www.mohawkflooring.com](http://www.mohawkflooring.com) | 800.233.4490



Up to 2,000 sq. yds. available within 10 business days or less



