





859 Nickel
Cover: 979 Charcoal

The Road Ahead Color Options



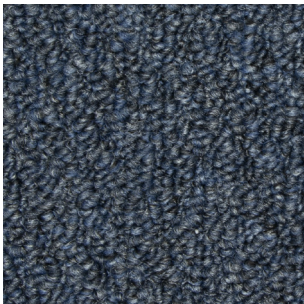
979 Charcoal



859 Nickel



949 Pewter



589 Cobalt



748 Praline



852 Chestnut

Specifications

BROAD LOOM	Brand	Aladdin Commercial
	Style Name / Number	Front & Center / 2B212
	Construction	Tufted
	Surface Appearance	Texture Patterned Loop
	Gauge.....	1/10 (39.37 rows per 10cm)
	Density	4,881
	Dye Method.....	100% Solution Dyed
	Fiber Type	Envirostrand™ SD PET
	Soil Release Technology.....	Mohawk Protection Plus Soil
	Primary Backing	Woven Polypropylene
	Secondary Backing	Weldlok®
	Indoor Air Quality	Green Label Plus Certified # 0350
	NSF 140	Gold
	Size	12' width (3.66 m)
	Pattern Repeat	0.4" W x 0.8" L
	Flammability	ASTM E 648 Class 1 (Glue Down)
	Smoke Density	ASTM E 662 Less than 450
	Static Propensity	AATCC-134 Under 3.5 KV
	Warranties.....	10 Year Limited Wear Warranty 10 Year Limited Static Protection Warranty 10 Year Limited Colorfastness to Light Warranty 10 Year Limited Stain Resistance Warranty 10 Year Limited Colorfastness to Atmospheric Contaminants

Aladdin[™]
COMMERCIAL

Mohawk Industries, Inc. warrants its adhesives for the life of the original installation only when a Mohawk Industries style (product) is installed. Mohawk’s floor preparation procedures must be followed to ensure that the substrate has been prepared properly. Failure to use Mohawk Industries adhesives or to follow Mohawk’s floor preparation procedures will void all lifetime adhesive warranties. Please contact your local Sales Representative for installation guidelines.

Mohawk is providing this architect folder for the purpose of promoting our commercial business. Color may vary from dye lot to dye lot. Substitution of material may be made due to improved technology, supply limitations or other factors. The performance of this product is not affected by such variations. We recommend the use of chair pads on all commercial installations.

For current and complete specifications please call tech support at 888-387-9881 or visit www.AladdinCommercial.com I 800.233.4490
Manufactured in the U.S. with domestic and imported materials

0092C_June/2022

